

ALACHUA COUNTY SPORTS EVENTS CENTER at CELEBRATION POINTE

ALACHUA COUNTY BOARD OF COUNTY COMMISSIONERS

- MARY ALFORD - DISTRICT 1
- MARIEHELEN WHEELER - DISTRICT 2
- ANNA PRIZZIA - DISTRICT 3
- KEN CORNELL - DISTRICT 4
- CHARLES "CHUCK" CHESNUT, IV - DISTRICT 5

ARCHITECTURAL 30% M-E-P DESCRIPTION OF SYSTEMS MARCH 15, 2021

ARCHITECT OF RECORD:
PAUL STRESING ASSOCIATES, INC.

ARCHITECTURE
SPACE PLANNING
INTERIOR DESIGN
ALACHUA, FLORIDA
TELEPHONE (386) 462 - 6407

DEVELOPER:
VIKING COMPANY, LLC
GAINESVILLE, FLORIDA
TELEPHONE (352) 333-9333
RADDSPORTS
GAINESVILLE / TAMPA, FLORIDA
TELEPHONE (941) 254-1857

STRUCTURAL ENGINEER
McVEIGH & MAGNUM ENGINEERING, INC.
JACKSONVILLE, FLORIDA
TELEPHONE (904) 483-5200

M-E-P ENGINEER
KPI ENGINEERING, INC.
TAMPA, FLORIDA
TELEPHONE (813) 241-6488
EXTERIOR DESIGN CONSULTANT
CUPCKOVIC ARCHITECTURE, LLC
CLEVELAND, OHIO
TELEPHONE (216) 524-8400

CIVIL ENGINEER
(PROVIDED UNDER SEPARATE COVER)
LANDSCAPE ARCHITECT
(PROVIDED UNDER SEPARATE COVER)

Q:\ACTIVE PROJECTS\2020\20-785 CELEBRATION POINTS VENUE\20-785 DWGS\20-785 A-00 VOL.1.dwg, 3/16/2021 11:14:14 AM, Adobe PDF
ANY MODIFICATIONS TO THESE PLANS OR RE-USE OF THESE PLANS MUST BE APPROVED BY AND SIGNED BY THE ARCHITECT.

PAUL STRESING ASSOCIATES, INC.

14517 MAIN STREET
ALACHUA, FLORIDA 32009
E-MAIL: paulstresingassociates.com
TELEPHONE: (386) 462-6407
REGISTRATION NO. AR0003985 - CA NO. AA0003977

DRAWN BY: JMA
DATE: 2020
PROJECT NO.: 20-785

CELEBRATION POINTE
ALACHUA COUNTY SPORTS EVENTS CENTER
GAINESVILLE, FLORIDA

REVISIONS	DATE



SHEET NO.
A.0

03 / 15 / 2021



Design information herein is property of CUPKOVIC architecture, llc

ALACHUA COUNTY SPORTS & EVENTS CENTER

Architect

MARCH 9, 2021
21-013





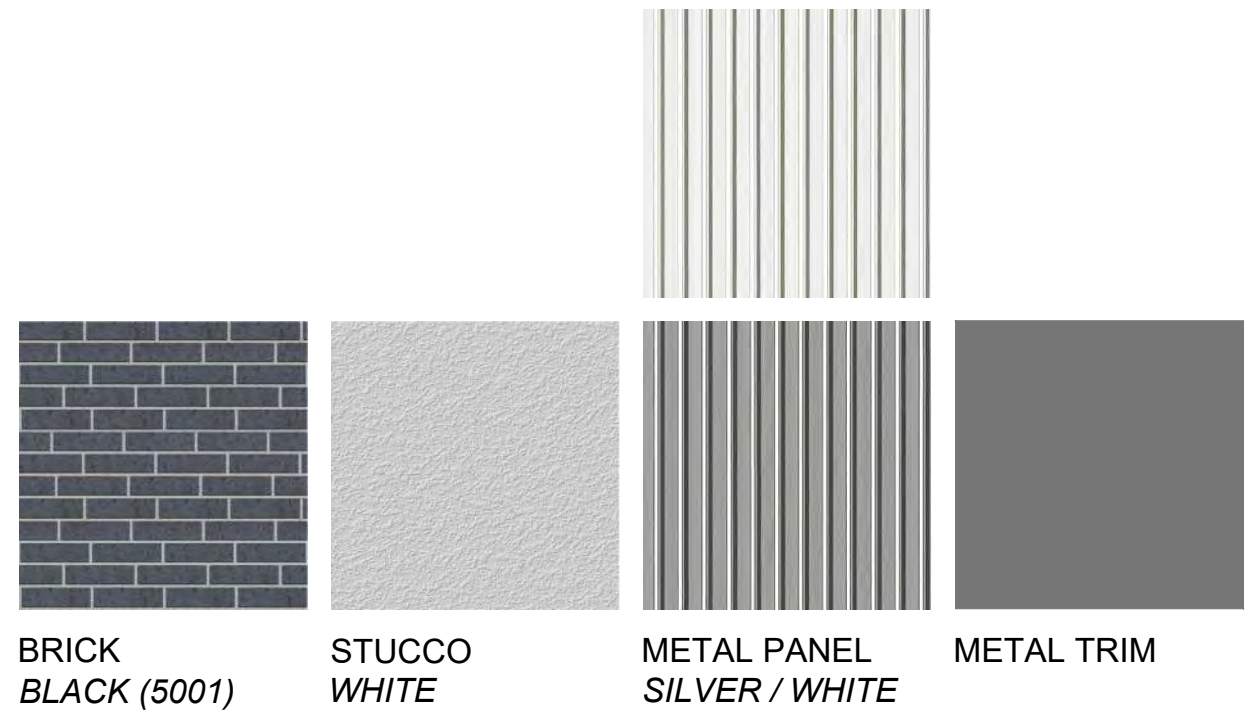
Design information herein is property
of CUPKOVIC architecture, llc

ALACHUA COUNTY SPORTS & EVENTS CENTER

Architect

MARCH 9, 2021
21-013





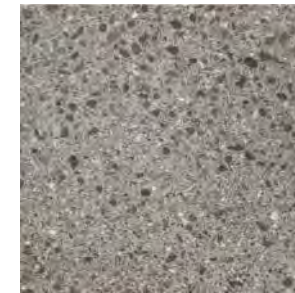
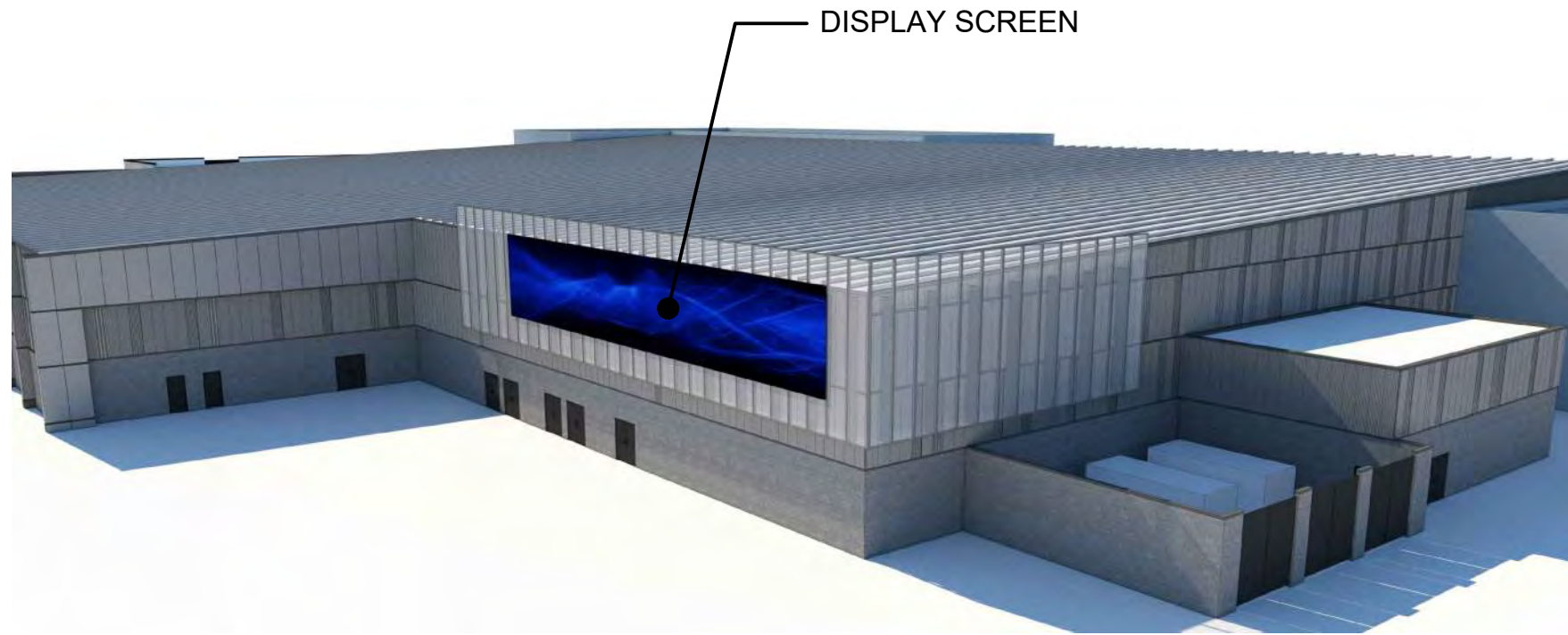
ATHLETIC FACILITY - SOUTH ELEVATION - BRICK WITH STUCCO

Design information herein is property of CUPKOVIC architecture, llc

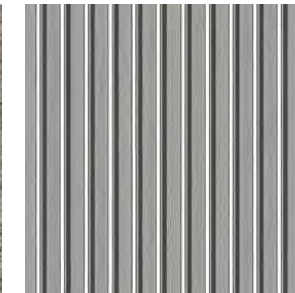
Architect

MARCH 9, 2021
21-013





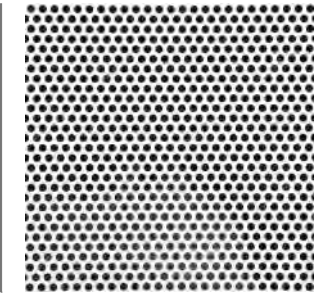
CMU
FINISH TBD



METAL PANEL
SILVER



METAL TRIM



METAL MESH
SILVER



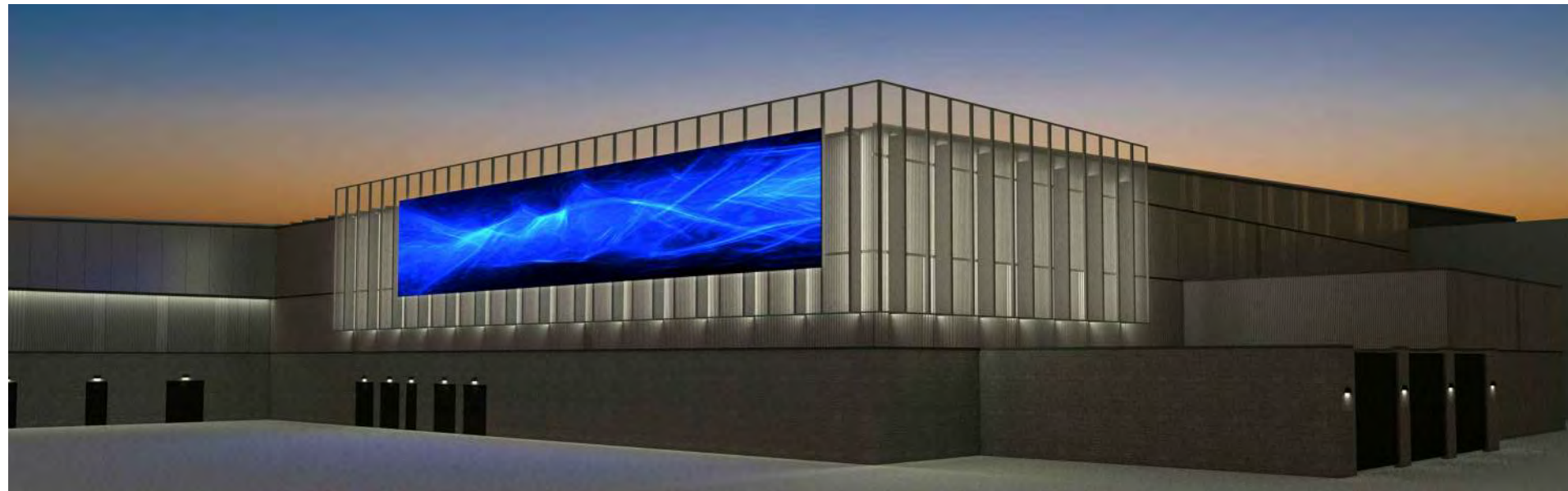
ATHLETIC FACILITY - NORTH ELEVATION

Design information herein is property
of CUPKOVIC architecture, llc

Architect

MARCH 9, 2021
21-013





LED display with illuminated metal mesh and fins



Up/Down fixtures with strip lighting



Uplighting with Accent Lights



Up/Down fixtures with strip lighting



Uplighting with LED display



General Entry Lighting

Design information herein is property of CUPKOVIC architecture, llc

Architect

ATHLETIC FACILITY - LIGHTING CONCEPTS

MARCH 9, 2021
21-013



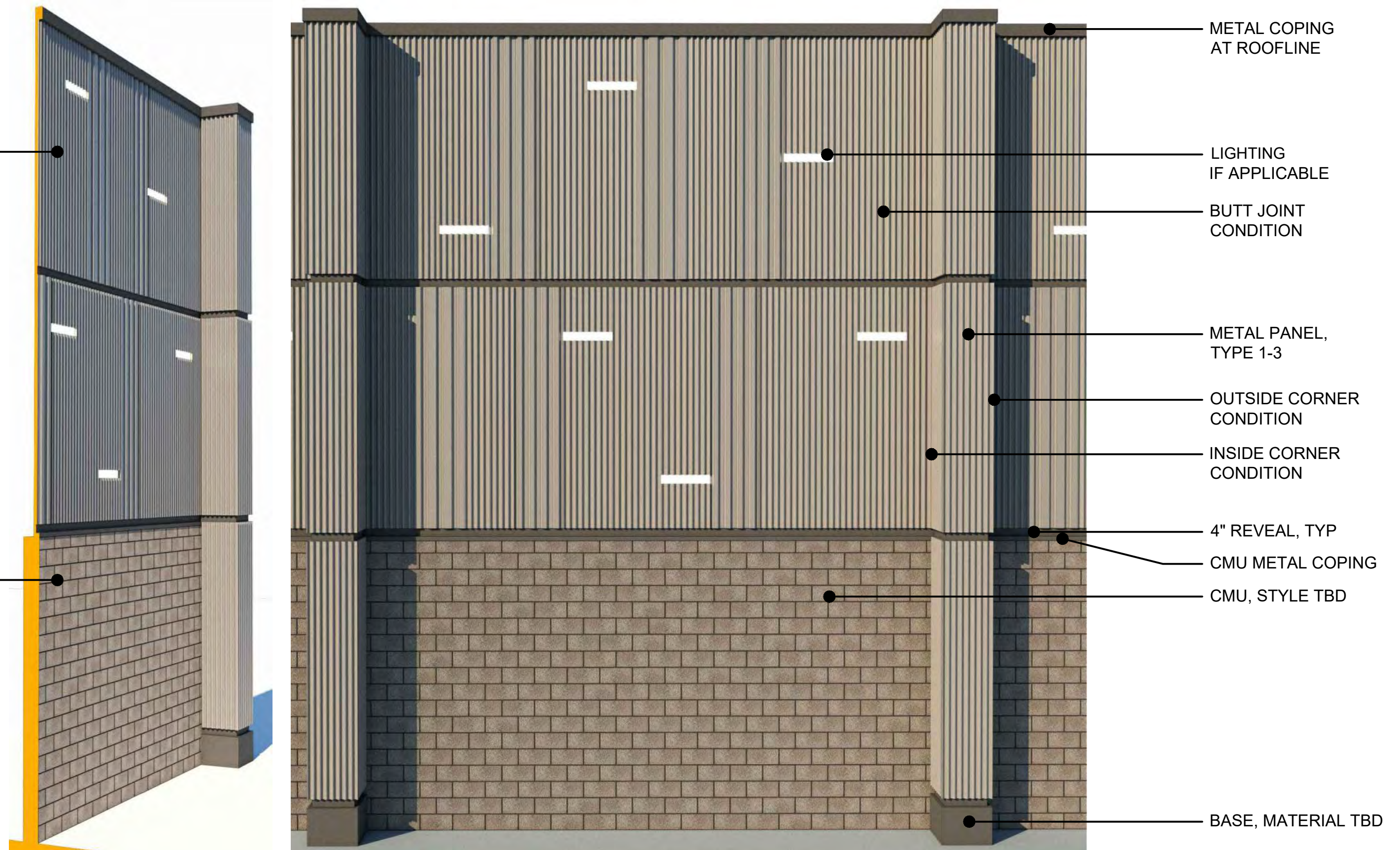


Design information herein is property of CUPKOVIC architecture, llc

ATHLETIC FACILITY - ENLARGED SOUTH ELEVATION

Architect

MARCH 9, 2021
21-013



METAL
BUILDING
STRUCTURE
WITH
CLADDING

CMU
STRUCTURE
AND
CLADDING

METAL COPING
AT ROOFLINE

LIGHTING
IF APPLICABLE

BUTT JOINT
CONDITION

METAL PANEL,
TYPE 1-3

OUTSIDE CORNER
CONDITION

INSIDE CORNER
CONDITION

4" REVEAL, TYP

CMU METAL COPING

CMU, STYLE TBD

BASE, MATERIAL TBD

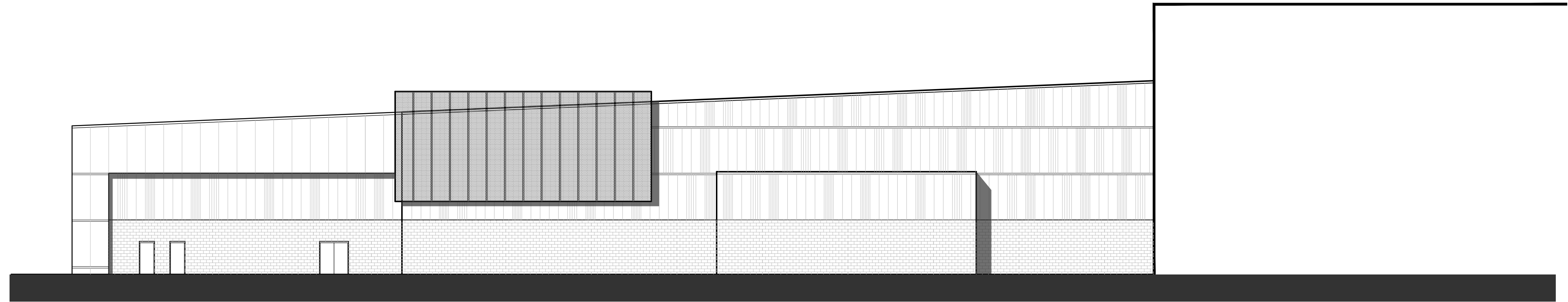
Design information herein is property
of CUPKOVIC architecture, llc

ATHLETIC FACILITY - ENLARGED EAST ELEVATION

Architect

MARCH 9, 2021
21-013

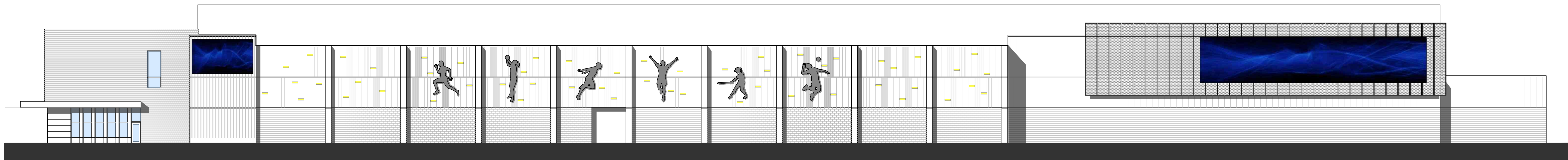




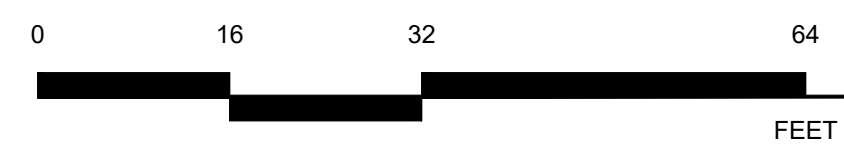
NORTH ELEVATION



SOUTH ELEVATION



EAST ELEVATION

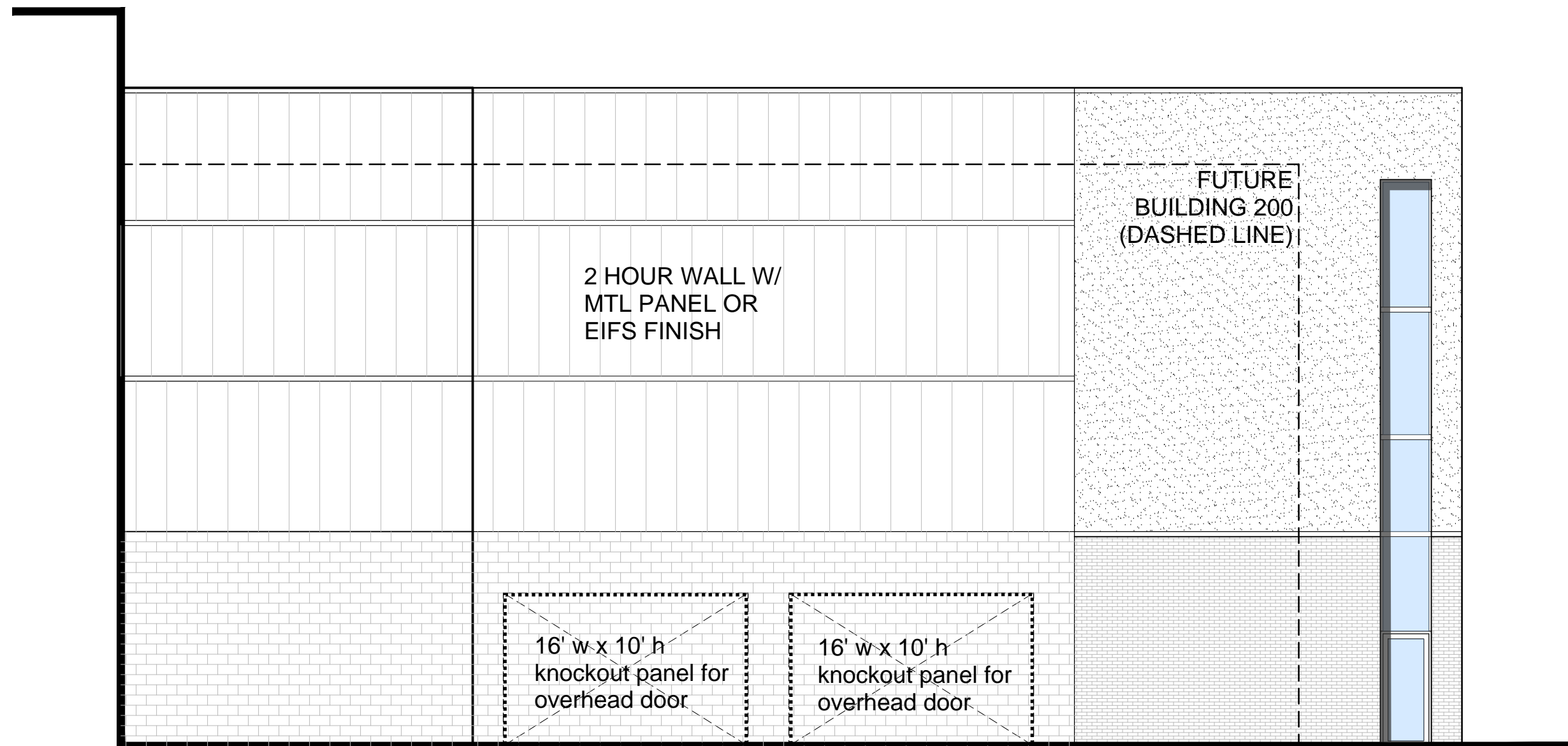


EXTERIOR ELEVATIONS

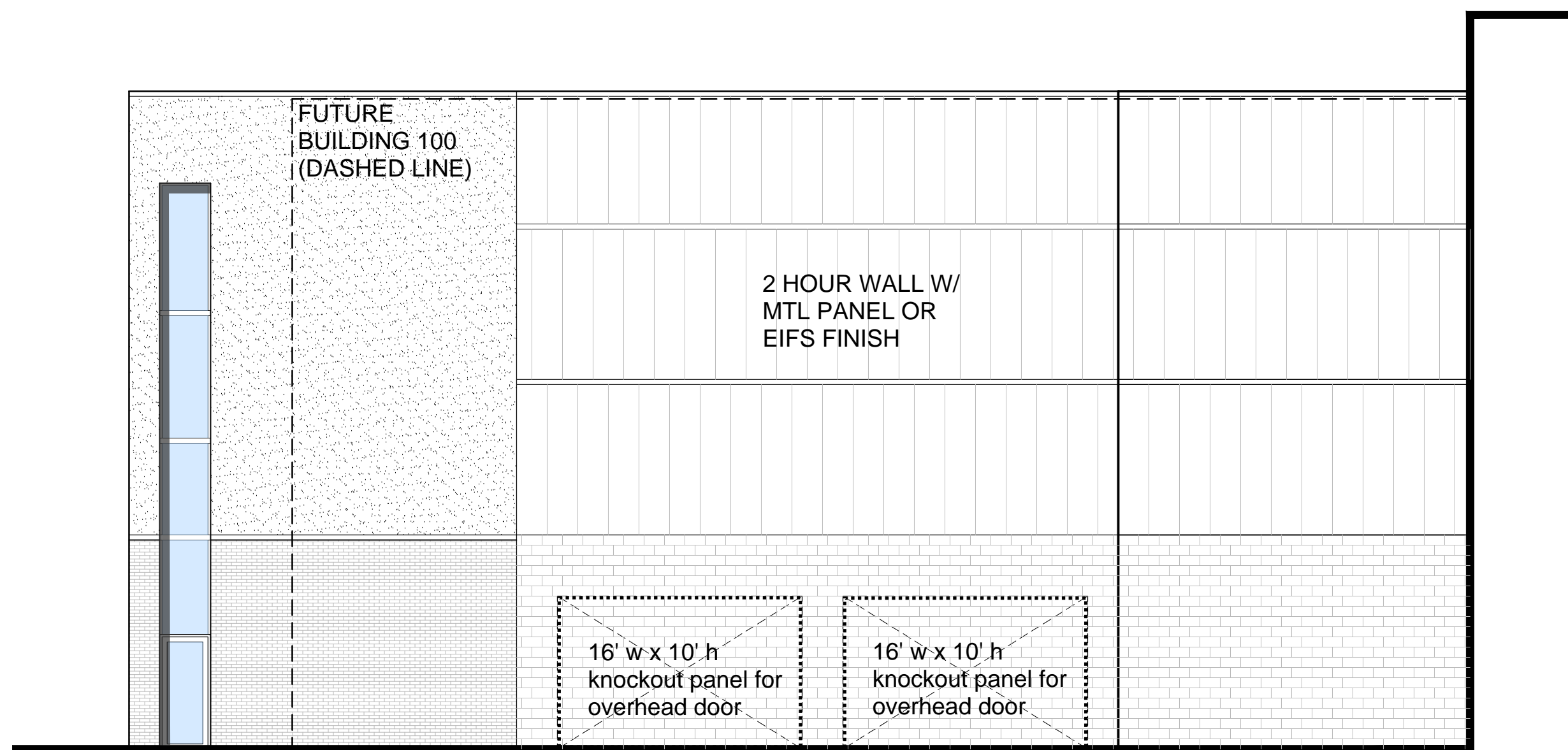
Architect

MARCH 1, 2021
14-010

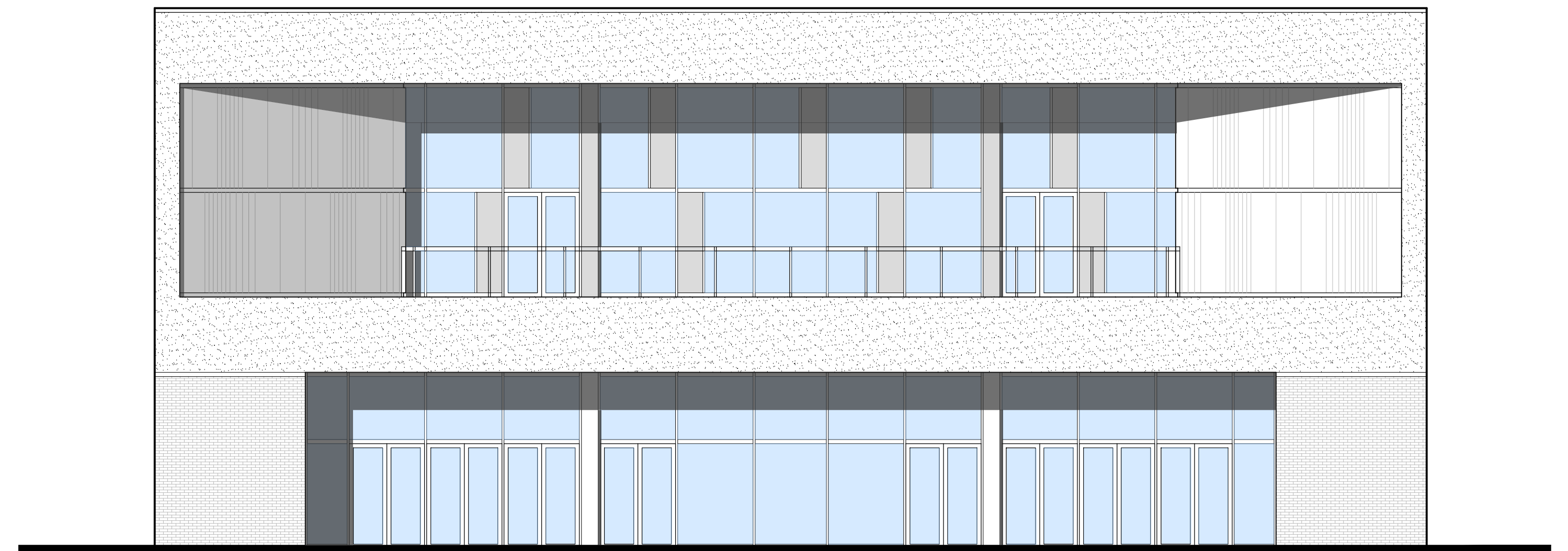




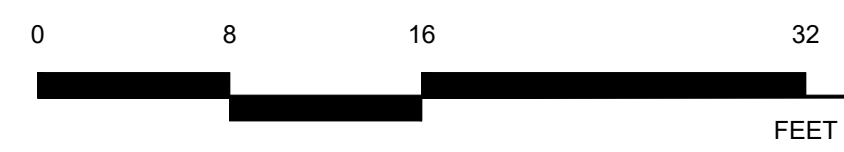
NORTH ELEVATION



SOUTH ELEVATION



WEST ELEVATION

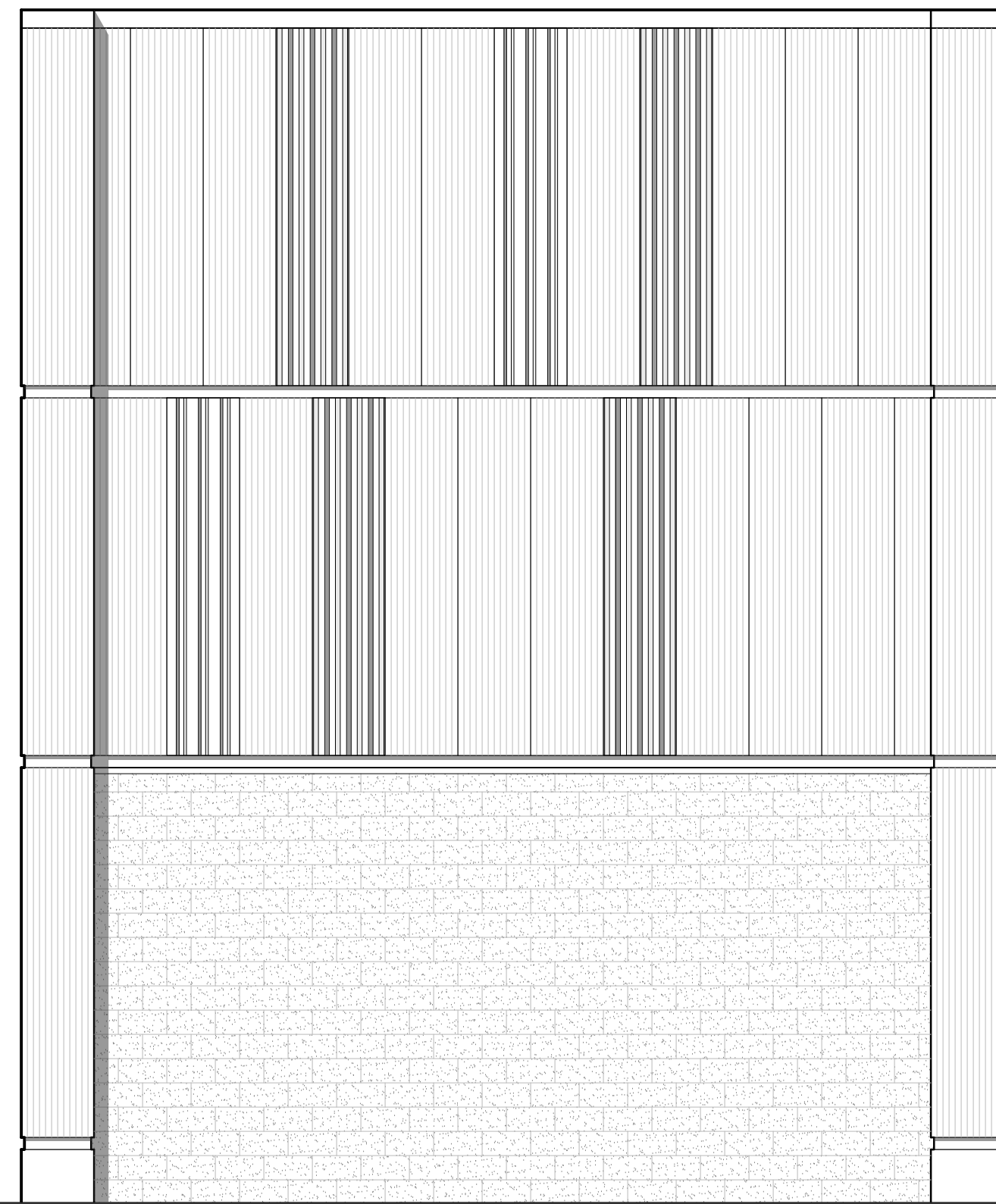


EXTERIOR ELEVATIONS - WEST LOBBY

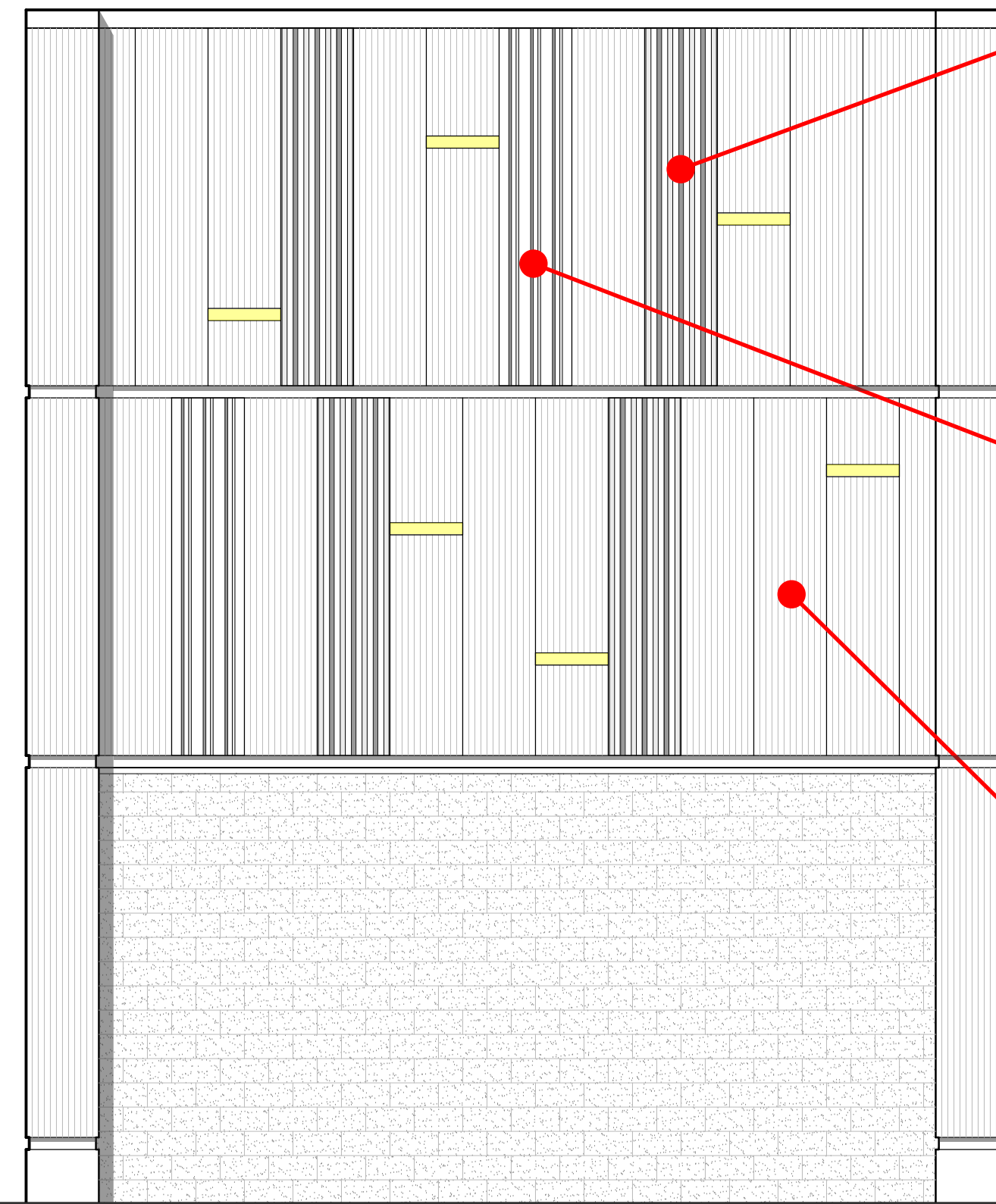
Architect

MARCH 14, 2021
14-010

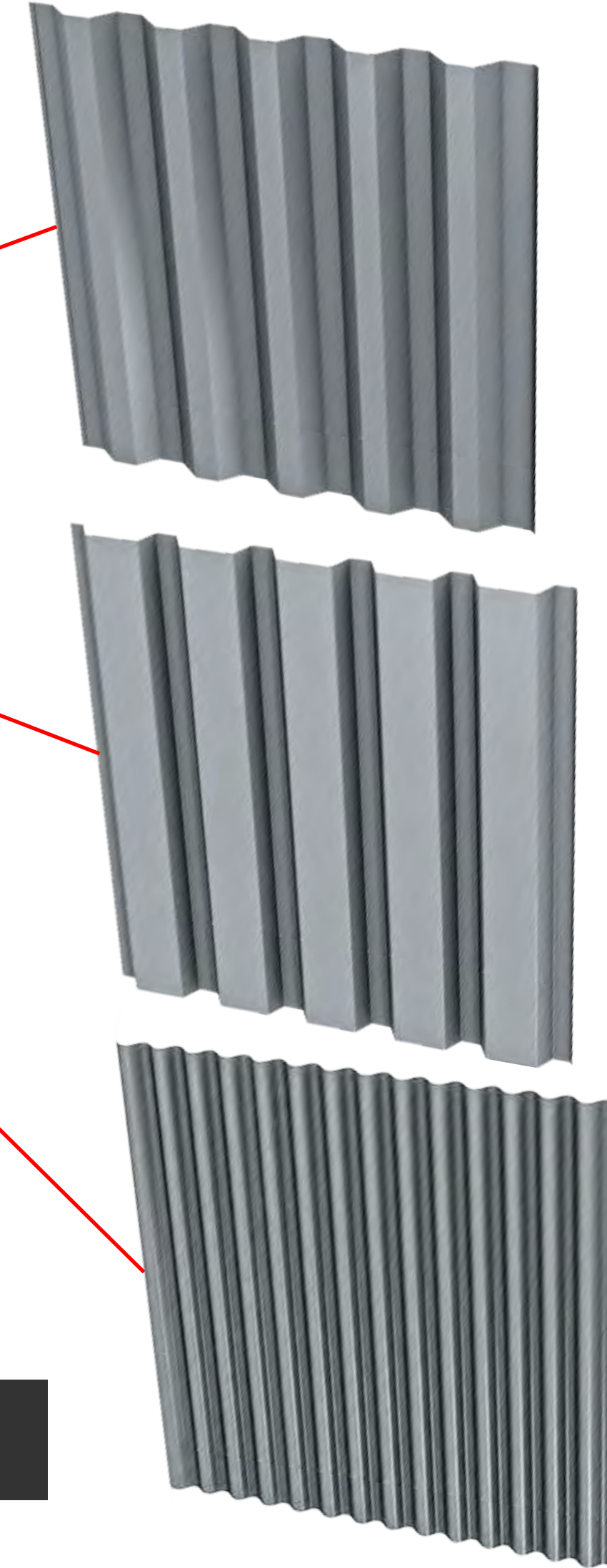




Typical Bay @ East Elevation



Typical Bay w/ Accent Lights



Recessed Lighting Concept



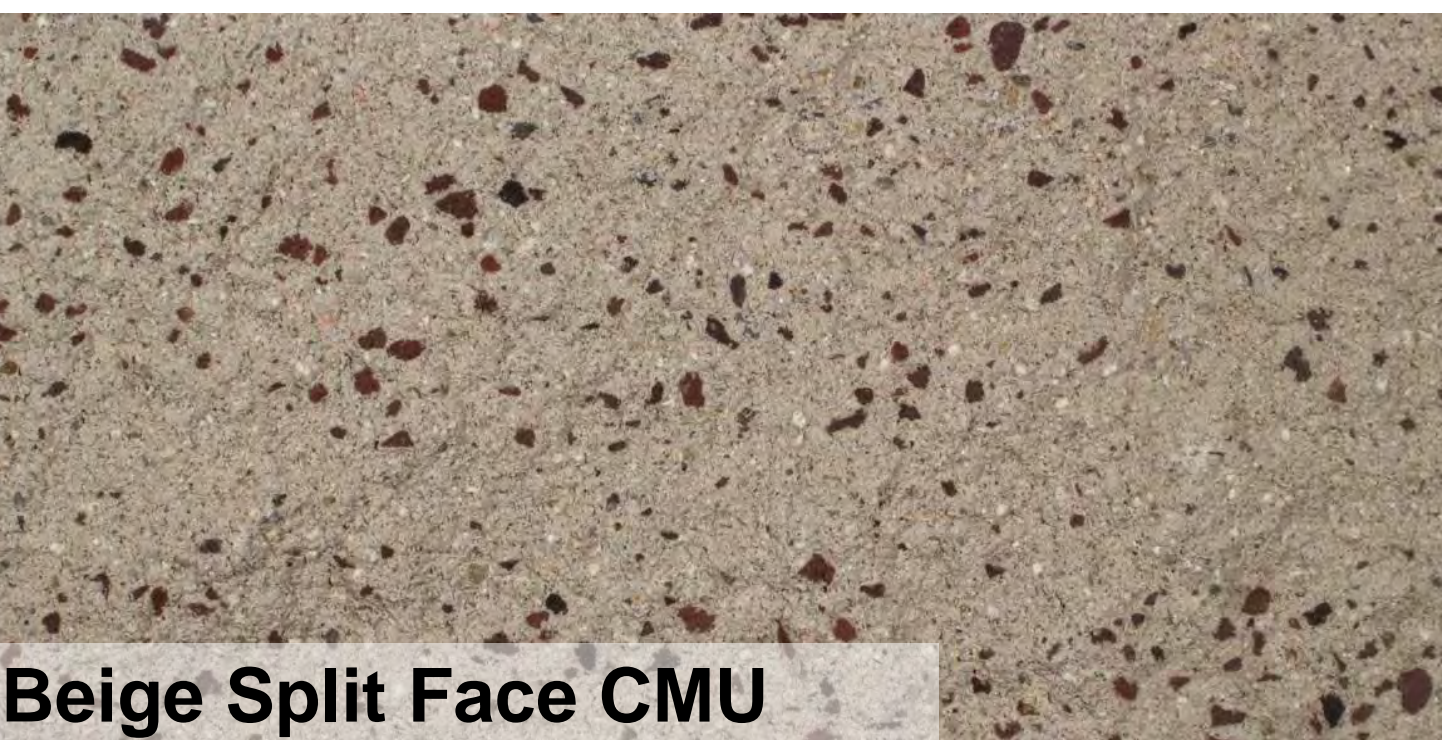
White Stucco / EIFS



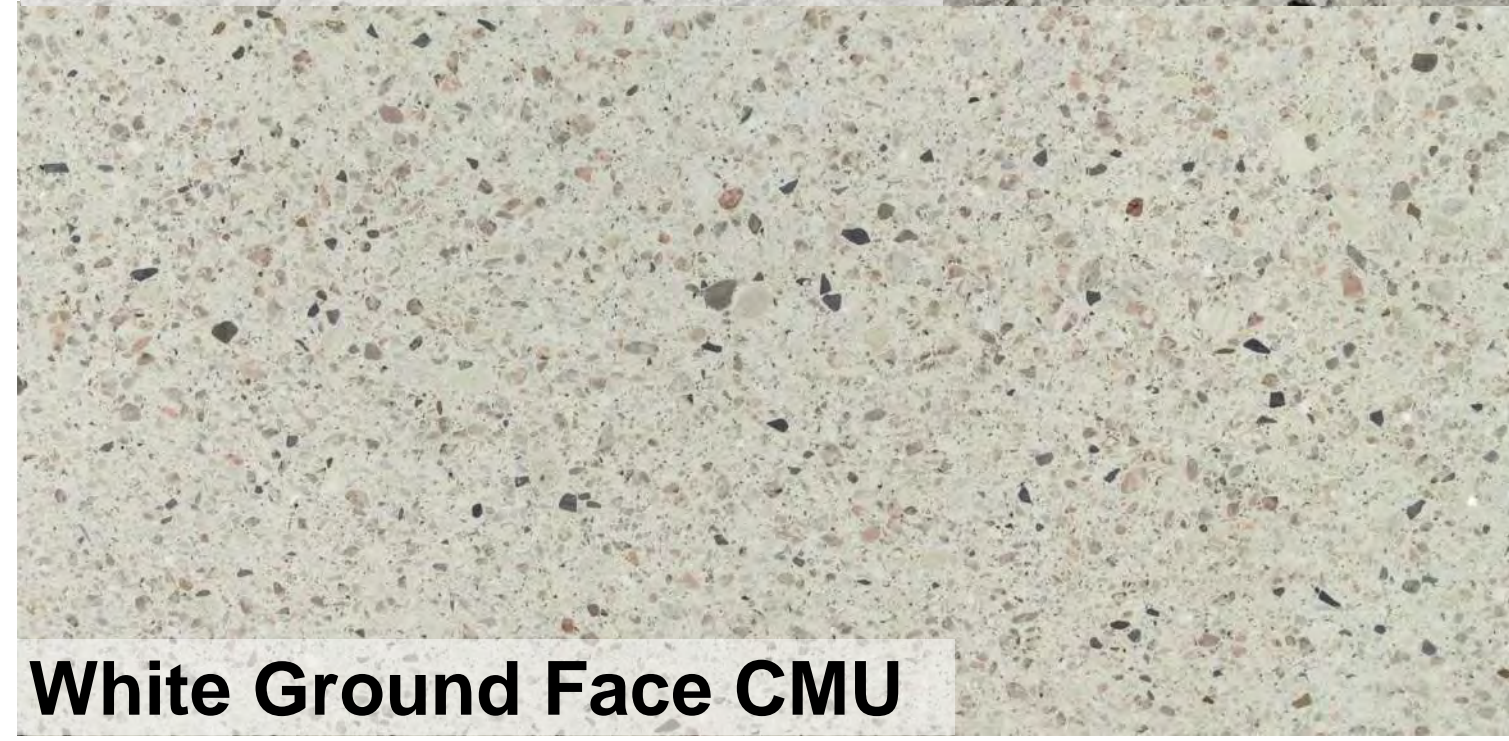
White Split Face CMU



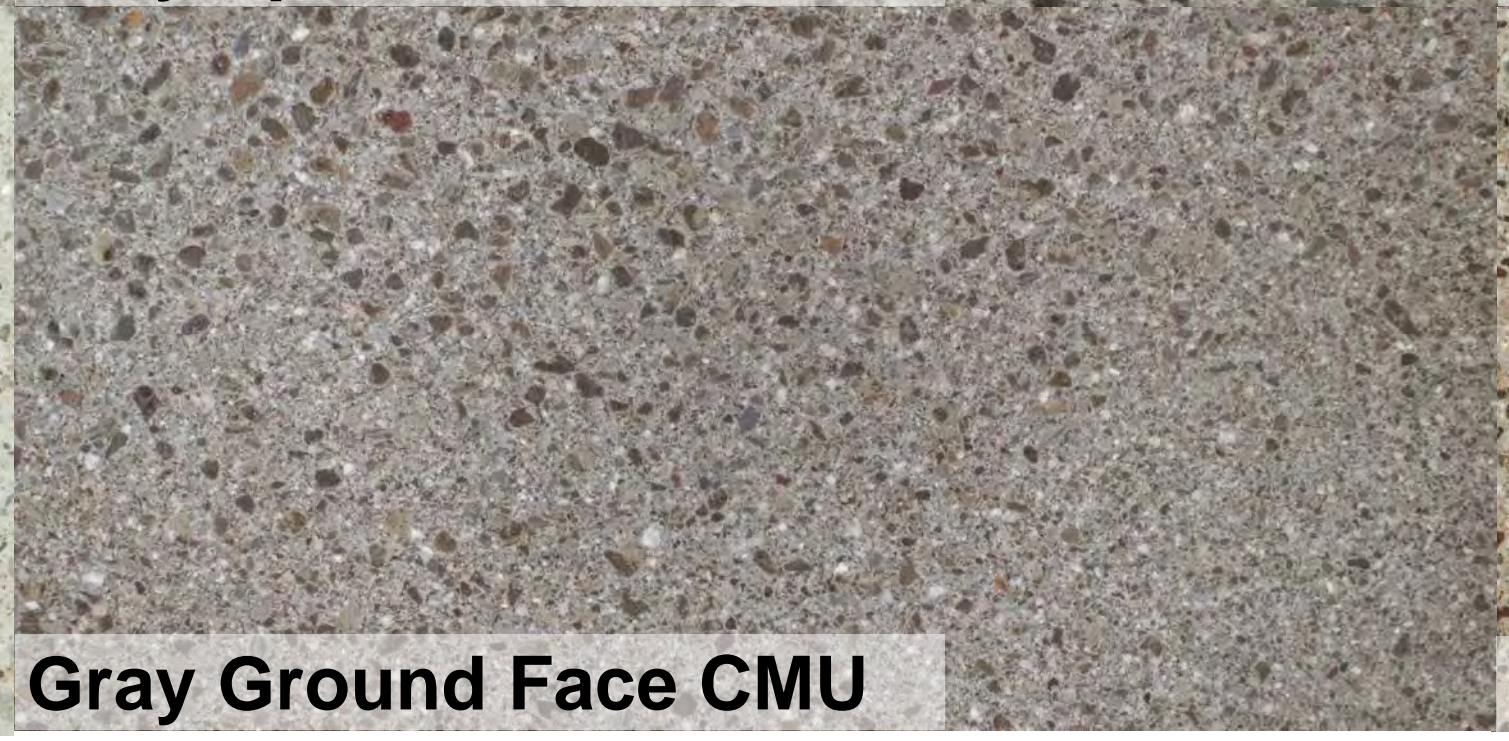
Gray Split Face CMU



Beige Split Face CMU



White Ground Face CMU



Gray Ground Face CMU



Beige Ground Face CMU



Black Face Brick

EXTERIOR ELEVATIONS - MATERIAL CONCEPTS

Architect

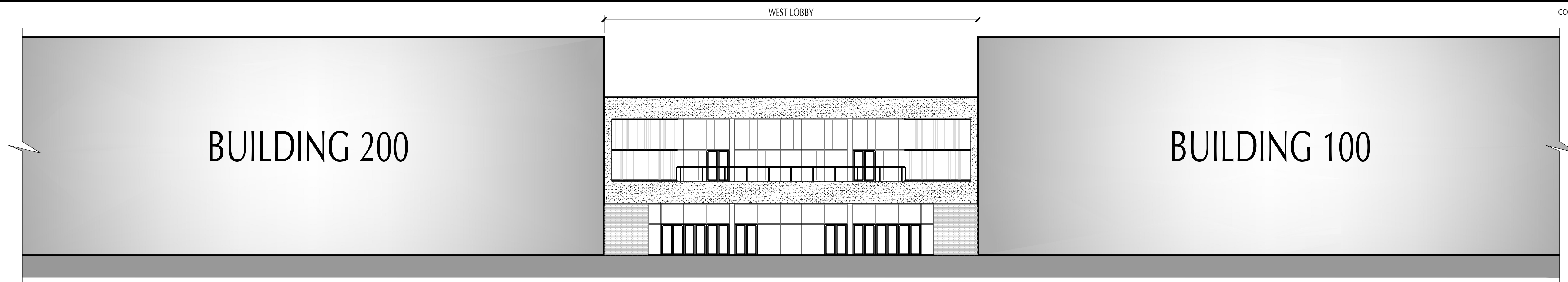
MARCH 1, 2021
14-010



Q:\ACTIVE PROJECTS\2020\20-785_CELEBRATION SPORTS VENUE\20-785_DWGS\20-785_A-06-00.dwg, 3/15/2021 6:07:48 PM, AutoCAD PDF (General Documentation).pc3

ANY MODIFICATIONS TO THESE PLANS OR RE-USE OF THESE PLANS MUST BE APPROVED BY AND SIGNED BY THE ARCHITECT.

COPYRIGHT © 2020 PAUL STRESING ASSOC.

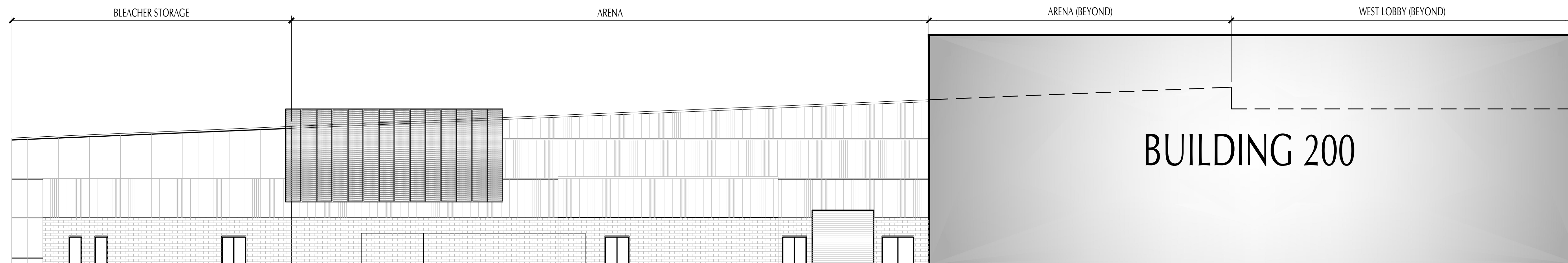


BUILDING 200

BUILDING 100

WEST ELEVATION

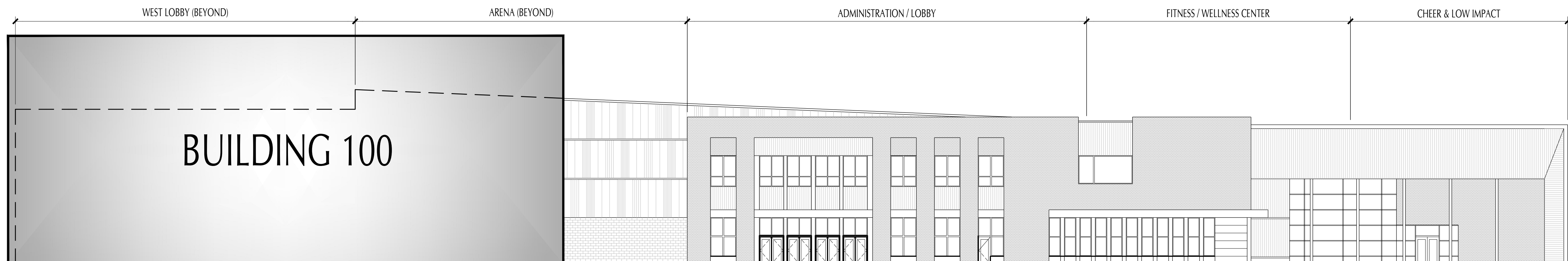
1/16" = 1'-0"



BUILDING 200

NORTH ELEVATION

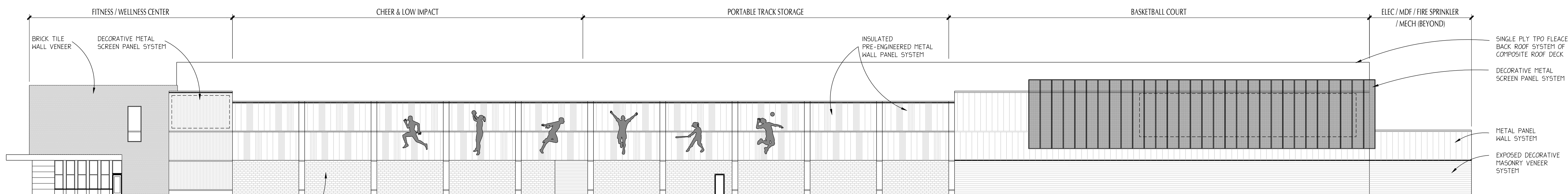
1/16" = 1'-0"



BUILDING 100

SOUTH ELEVATION

1/16" = 1'-0"



EAST ELEVATION

1" = 20'-0"

03 / 15 / 2021

DRAWN BY: JMA
 DATE: 2020
 PROJECT NO: 20-785

PAUL STRESING ASSOCIATES, INC.
 14817 MAIN STREET
 ALACHUA, FLORIDA 32916
 E-MAIL: paul@paulstresingassociates.com
 4052 W. UNIVERSITY BLVD. SUITE 400
 ALACHUA, FLORIDA 32916
 REGISTRATION NO.: AR0013985 - CA NO. AA0003377

CELEBRATION POINTE
ALACHUA COUNTY SPORTS EVENTS CENTER
GAINESVILLE, FLORIDA

REVISIONS	DATE	ARCHITECT'S SEAL

PSA
LIC. NO. AR0013985

SHEET NO. A.6.0