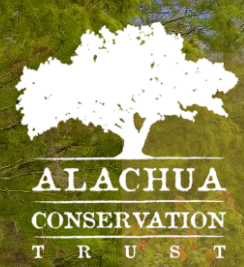


# ACT is applying for Federal grants to maximize funding opportunity for conservation efforts in Alachua County.

## County Comprehensive Plan 2019-2040:

- Conservation and Open Space Element 6.0, Objective 6.4 Other Acquisition Program, Policy 6.4.1 and 6.4.2 state:
  - “The County shall seek to maximize the effectiveness of local revenue sources by using them to leverage funds available from **federal , state... programs...**” “The County shall provide support, in the form of information, coordination, assistance in obtaining grants, and other support activities to organizations and agencies that acquire and protect natural areas and open space for conservation..”
- Future Land Use Element 6.0 Rural and Agricultural Policies, Objective 6.1 Policy 6.1.1, states:
  - “The County shall encourage productive agricultural uses...” “...for purchase of agricultural conservation easements and purchase of development rights.” with the “...use of **state and federal incentives.**”



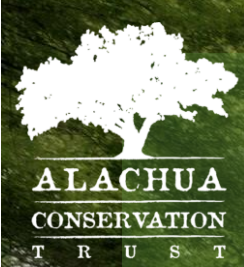


# ACT & Alachua County Conservation Partnerships

The **Regional Conservation Partnership Program (RCPP)** awards Farm Bill federal cash through the Natural Resources Conservation Service (NRCS) to protect non-industrial farm land.

The **North American Wetlands Conservation Act (NAWCA)** grant awards federal cash through the U.S. Fish and Wildlife Service to protect wetland habitat.





# RCPP Accomplishments

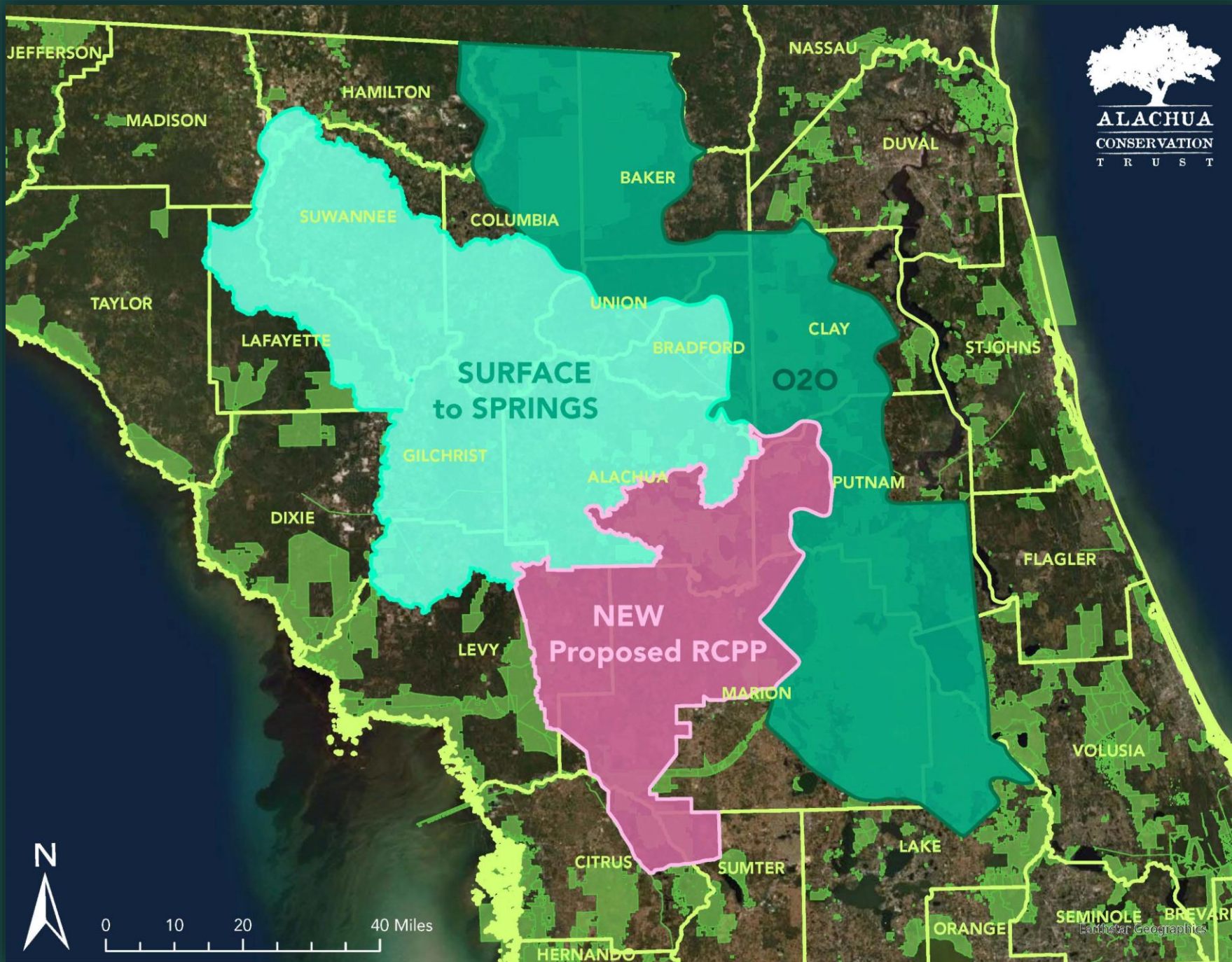
## AWARDED!

In Spring of 2021 ACT, in partnership with Alachua County, was awarded \$7.1 Million from NRCS for the purchases of conservation easements that benefit Florida's springs in the Santa Fe and Suwannee Regions.

## NEW PROPOSAL:

ACT is proposing a new RCPP which will protect important wetlands and uplands in the Orange Creek Basin, Ocklawaha, Silver River and Withlacoochee watersheds.





## RCPP Projects in North Central Florida

- NEW Proposed RCPP
- Surface to Springs- Alachua Conservation Trust
- O2O (Ocala to Osceola) - North Florida Land Trust
- Florida Counties
- Conservation Lands

The **Regional Conservation Partnership Program (RCPP)** awards Farm Bill federal cash through the Natural Resources Conservation Service to protect non-industrial farm land.

ACT is currently working in the **Surface to Springs RCPP** to protect uplands in NCFL to protect groundwater and springs.



# NAWCA Accomplishments

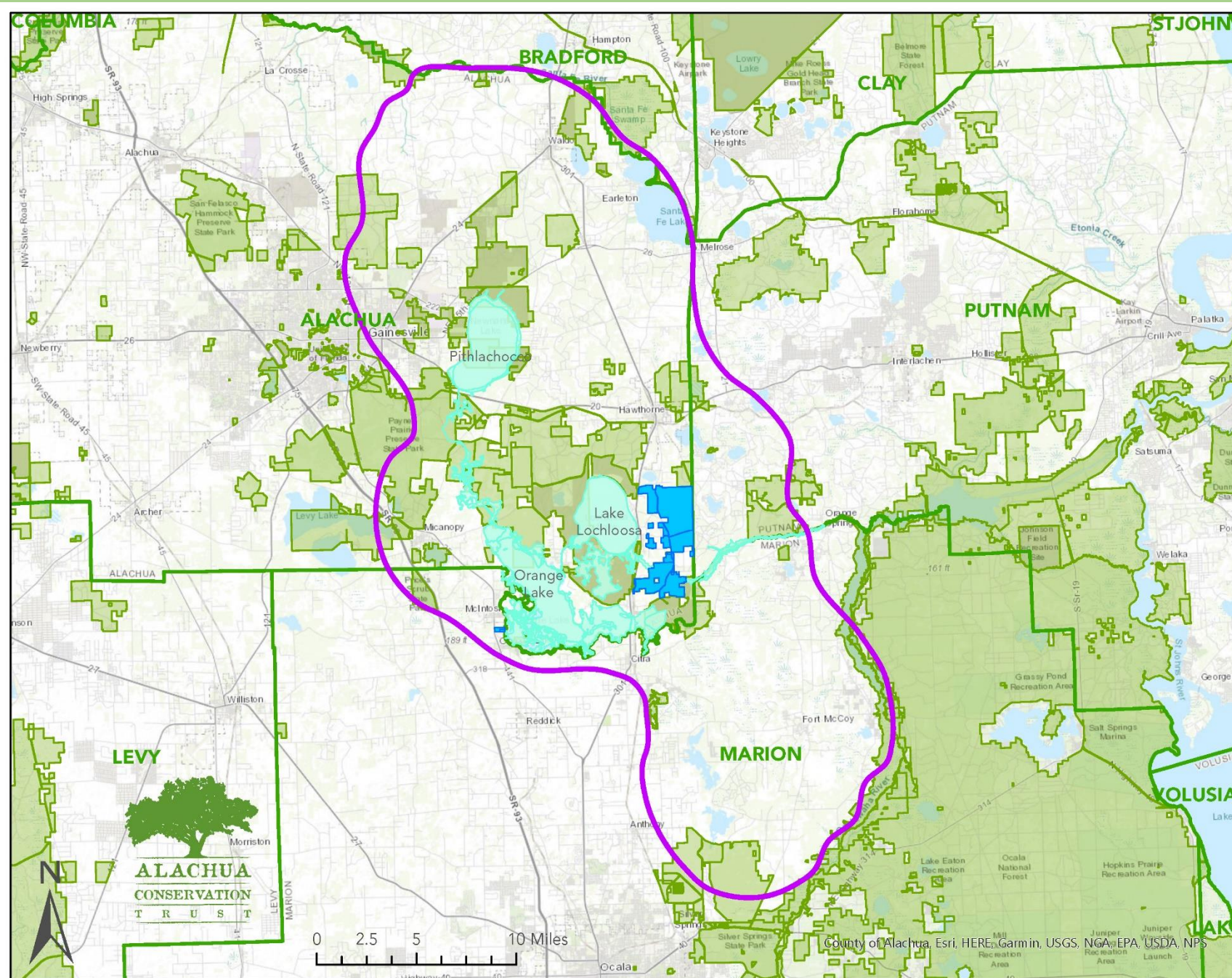
## AWARDED!

In September 2021 ACT, in partnership with Alachua County, was awarded \$1 Million from NAWCA for the purchases of Orange Lake Overlook, Lochloosa Slough, and other properties around Orange Lake.

## PENDING AWARD:

The partnership expects to receive \$2 Million from NAWCA for the purchase of Fox Pen Connector. Confirmation pending.





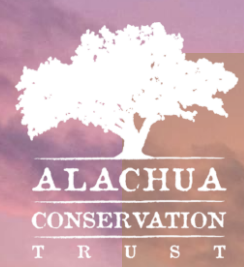
# NAWCA Project: North Florida Wetlands Conservation Connector Project

- NAWCA Major Lakes and Waterways
- County Boundaries
- Conservation Lands
- NFWCCP Project Area
- NFWCCP Parcels

The North American Wetlands Conservation Act (NAWCA) grant awards federal cash through the U.S. Fish and Wildlife Service to protect wetland habitat.

This NAWCA Project, the North Florida Wetlands Conservation Connector Project, is a multiphase project which will continue to protect regional wetlands over the next 5+ years.





- ACT is requesting an approval of a motion from the Alachua County Board of County Commissioners to authorize an allocation of up to \$10M of WSPP funding to be used as match of projects within Alachua County portions of the RCPP.
- ACT is requesting a motion to allow the County Manager or County Land Conservation and Management Director to approve changes to the Partner Contribution Forms which are a ***reduction in funds requested*** in order to efficiently adjust applications as the need arises.

**Thank You for your time!**