

September 17, 2021

Attn To:

Byron Flagg, Land Conservation Negotiator
Charlie Houser, Director of Office of Land Conservation
408 W. University Ave., Suite 106
Gainesville, FL 32601
Bflagg@alachuacounty.us
CHouser@alachuacounty.us

Dear Byron and Charlie,

After thinking about the proposed conservation easement on our family's property, and after talking to you in more detail about our family's future plans and the county's conservation goals, we would like to request the county to consider purchasing a large portion of our property in fee simple – instead of a conservation easement. This would include a sale of the majority of parcels 02725-004-000 and 02725-000-000.

We want to keep enough acreage along County Road 1491 to keep our existing family residences where we plan to live the remainder of our lives. I am attaching a map of the property on which I hand drew the portion of land we want to keep, and the remainder pastureland that slopes down to the Santa Fe River we propose to sell to the county in fee simple. This would result in our family no longer grazing the pasture with cattle which we think would benefit the Santa Fe River's water quality. We would also make sure the acreage sold to the county included a fee simple right of way access to County Road 1491.

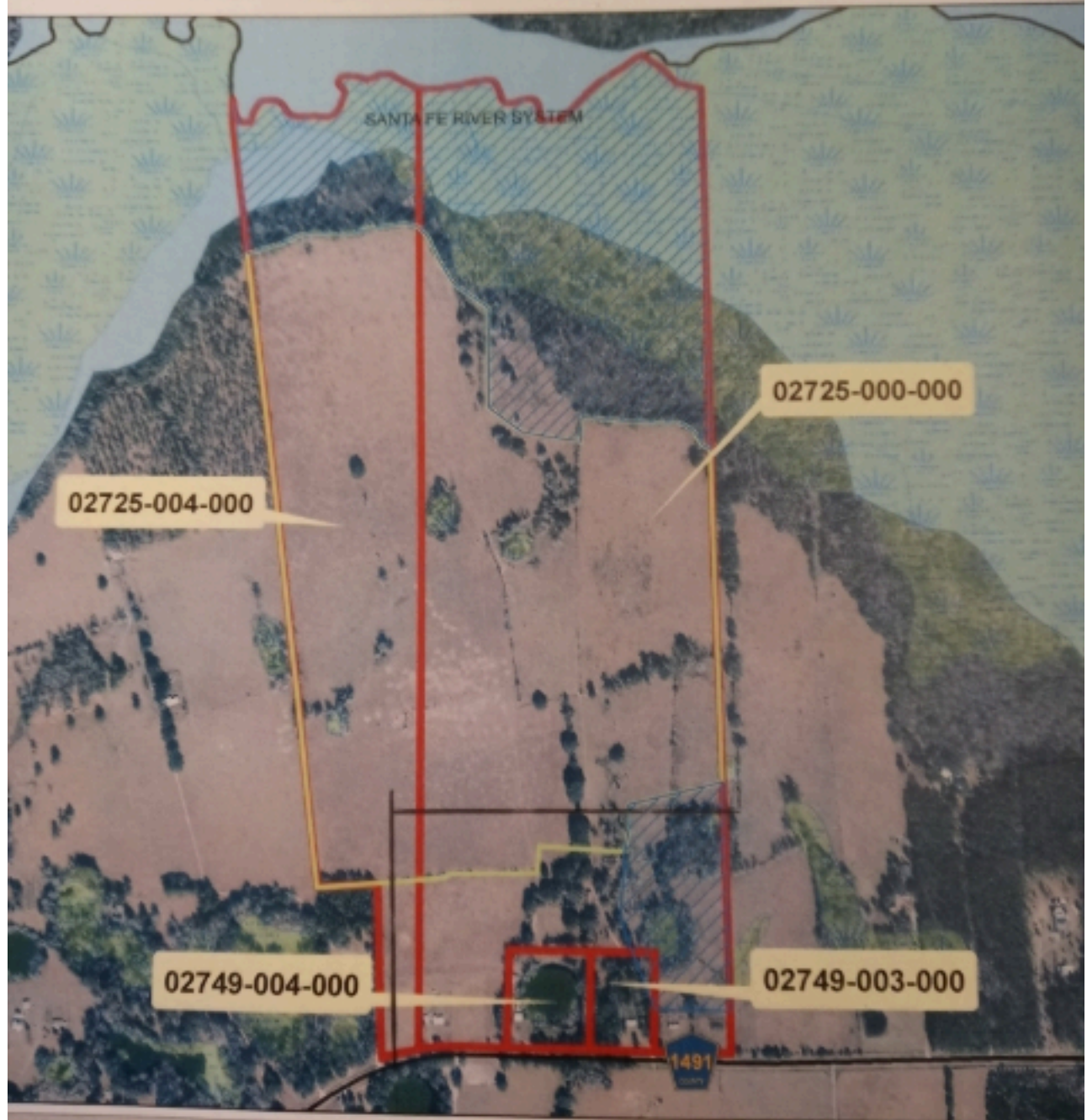
By way of this letter, I am requesting that you request the Land Conservation Board to consider our family's request and look forward to continuing to work with you.

Sincerely,

Joel Matthews



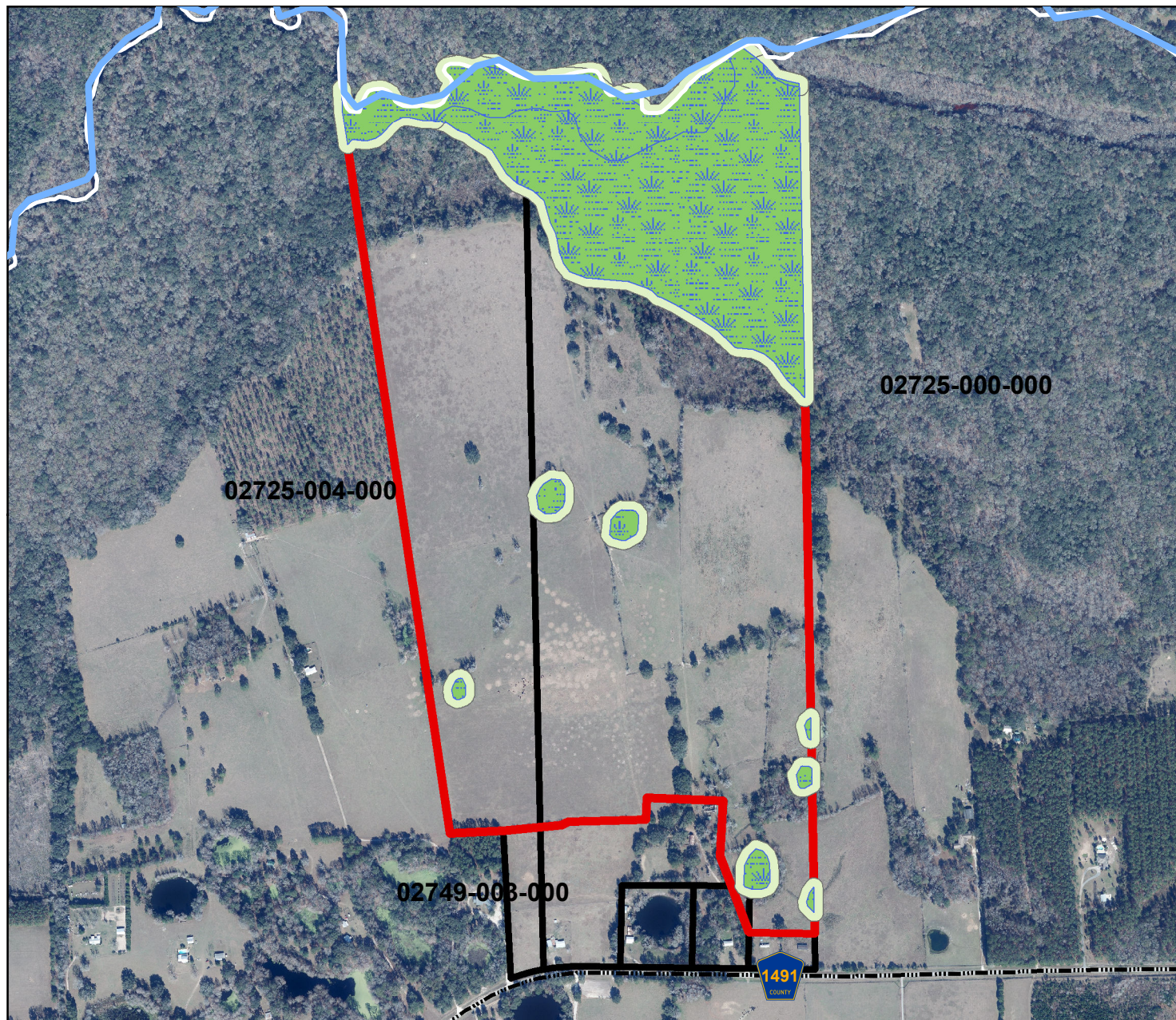
Matthews C.E. Zone Map



0 650 1,300 2,600 Feet

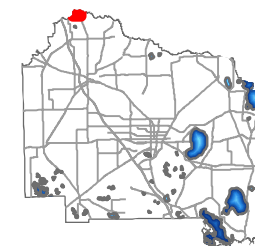
DISCLAIMER: This map and the spatial data reference purposes only. The Alachua County IS without warranty of any kind. The quality of layer is obtained.

Sanat Fe River - Matthews: (CE) NWI Wetland Map



Legend

- Santa Fe River
- County Boundary
- NWI Wetlands (52.11 ac.)
- 50 foot buffer NWI Matthews
- Matthews CE (~221 ac)
- 4 Matthews Parcels (~247 ac)
- COUNTY ROAD



0 650 1,300 2,600 Feet

DISCLAIMER: This map and the spatial data it contains are made available as a public service, to be used for reference purposes only. The Alachua County Environmental Protection Department provides this information AS IS without warranty of any kind. The quality of the data is dependent on the various sources from which each data layer is obtained.