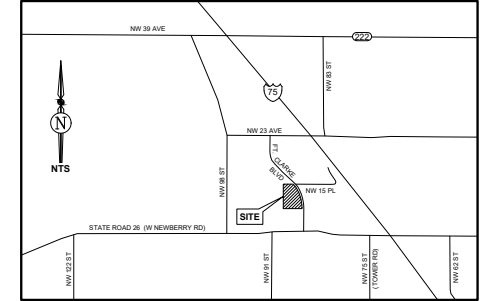


**BOUNDARY & TOPOGRAPHIC SURVEY**  
IN SECTION 32, TOWNSHIP 9 SOUTH, RANGE 19 EAST, ALACHUA COUNTY, FLORIDA

**LOCATION MAP**



**LEGAL DESCRIPTION PER TITLE COMMITMENT: NCS-971147-ATL**

A PARCEL OF LAND LOCATED IN SECTION 32, TOWNSHIP 09 SOUTH, RANGE 19 EAST, ALACHUA COUNTY, FLORIDA AND BEING MORE PARTICULARLY DESCRIBED AS FOLLOWS:

COMMENCE AT A 4"x4" CONCRETE MONUMENT (NO IDENTIFICATION) MARKING THE NORTHEAST CORNER OF "EAGLE POINT CLUSTER SUBDIVISION PHASE II" AS RECORDED IN PLAT BOOK "U", PAGE 27 OF THE PUBLIC RECORDS OF ALACHUA COUNTY, FLORIDA, SAID POINT BEING THE POINT OF BEGINNING, THENCE SOUTH 89°59'00" WEST, ALONG THE NORTH LINE OF SAID "EAGLE POINT CLUSTER SUBDIVISION PHASE II", A DISTANCE OF 1014.86 FEET TO A 4"x4" CONCRETE MONUMENT (NO IDENTIFICATION) MARKING THE NORTHWEST CORNER OF SAID "EAGLE POINT CLUSTER SUBDIVISION PHASE II" AND BEING ON THE EAST LINE OF "EAGLE POINT CLUSTER SUBDIVISION PHASE I" AS RECORDED IN PLAT BOOK "T", PAGE 54 OF SAID PUBLIC RECORDS, THENCE NORTH 00°01'48" WEST, ALONG THE EAST LINE OF SAID "EAGLE POINT CLUSTER SUBDIVISION PHASE I", A DISTANCE OF 714.42 FEET TO A 4"x4" CONCRETE MONUMENT (PLS 4258) MARKING THE NORTHEAST CORNER OF SAID "EAGLE POINT CLUSTER SUBDIVISION PHASE I" AND BEING THE SOUTHEAST CORNER OF "EAGLE POINT CLUSTER SUBDIVISION PHASE I" AS RECORDED IN PLAT BOOK "S", PAGES 74-75 OF SAID PUBLIC RECORDS, THENCE CONTINUE NORTH 00°01'48" WEST, ALONG THE EAST LINE OF SAID "EAGLE POINT CLUSTER SUBDIVISION PHASE I", A DISTANCE OF 1185.52 FEET TO A 4"x4" CONCRETE MONUMENT (PLS 4258) MARKING THE INTERSECTION WITH THE NORTH LINE OF THE SOUTHWEST 1/4 OF SAID SECTION 32, THENCE LEAVING SAID EAST LINE OF "EAGLE POINT CLUSTER SUBDIVISION PHASE I", RUN THENCE SOUTH 89°38'18" EAST, ALONG SAID NORTH LINE OF THE SOUTHWEST 1/4, A DISTANCE OF 595.48 FEET TO A 5/8" IRON ROD (NO IDENTIFICATION) MARKING THE INTERSECTION WITH THE WESTERLY RIGHT-OF-WAY LINE OF FORT CLARKE BOULEVARD (100 FOOT WIDE RIGHT-OF-WAY) AND BEING ON A NON-TANGENT CURVE CONCAVE TO THE WEST, SAID CURVE HAVING A RADIUS OF 1859.86 FEET, A CENTRAL ANGLE OF 39°16'02", AND A CHORD BEARING AND DISTANCE OF SOUTH 18°38'23" EAST, 1264.84 FEET, THENCE, ALONG THE ARC OF SAID CURVE AND ALONG SAID WESTERLY RIGHT-OF-WAY LINE OF FORT CLARKE BOULEVARD, AN ARC DISTANCE OF 1274.64 FEET TO A 5/8" REBAR & CAP (LB 3759) AND THE END OF SAID CURVE, THENCE CONTINUE ALONG SAID WESTERLY RIGHT-OF-WAY LINE, SOUTH 00°00'52" WEST, A DISTANCE OF 75.75 FEET TO THE POINT OF BEGINNING. CONTAINING 25.64 ACRES, MORE OR LESS.

**SURVEYOR'S NOTES**

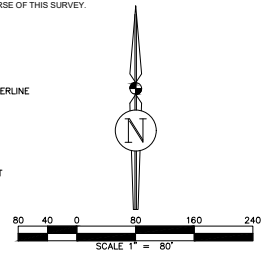
- BEARINGS ARE BASED ON THE SOUTH LINE OF THE SUBJECT PARCEL BEING THE NORTH LINE OF EAGLE POINT CLUSTER SUBDIVISION PHASE 3, SAID BEARING BEING S89°59'00"W
- ELEVATIONS ARE REFERENCED TO THE NORTH AMERICAN VERTICAL DATUM OF 1988 (NAV88) AND BASED ON THE U.S. NATIONAL GEODETIC SURVEY CONTINUOUSLY OPERATING REFERENCE STATION "GNVA" (DE6005), WITH A PUBLISHED ELEVATION OF 170.63 FEET
- STATE PLANE COORDINATES ARE REFERENCED TO THE NORTH AMERICAN DATUM ON 1983, 2011 ADJUSTMENT AND BASED ON THE U.S. NATIONAL GEODETIC SURVEY CONTINUOUSLY OPERATING REFERENCE STATION "GNVA" (DE6005), WITH A PUBLISHED POSITION IN THE SURVEY FEET OF:  
NORTHING = 256,559.5018  
EASTING = 2,674,388.1289
- THIS SURVEY IS BASED ON MEASUREMENTS CONDUCTED ON 08 AUGUST - 12 SEPTEMBER 2019.
- NO UNDERGROUND UTILITIES WERE LOCATED IN THE COURSE OF THIS SURVEY. UNDERGROUND UTILITY LINE LOCATIONS ARE APPROXIMATE.
- ADDITIONAL ENCUMBRANCES MAY AFFECT THE SUBJECT PARCEL THAT DO NOT APPEAR ON THIS MAP.
- EASEMENTS DEPICTED ON THIS SURVEY WERE PROVIDED BY THE CLIENT OR ARE RECORDED IN AN ASSOCIATED PLAT. NO EASEMENT RESEARCH WAS CONDUCTED DURING THE COURSE OF THIS SURVEY.

**ABBREVIATIONS**

(ID) = DEED/FROM TITLE COMMITMENT)  
(L) = ARC LENGTH  
(M) = MEASURED  
(R) = RADIUS  
Δ = DELTA ANGLE  
CONC. = CONCRETE POWER POLE  
ID = IDENTIFICATION  
JBPRO = J.BROWN PROFESSIONAL GROUP  
LB = LICENSED SURVEYING BUSINESS  
LS = LICENSED SURVEYOR  
OHW = OVERHEAD ELECTRIC WIRE  
O.R.B. = OFFICIAL RECORDS BOOK  
P.B. = PLAT BOOK  
P.G. = PAGE  
PLS = PROFESSIONAL LAND SURVEYOR  
P.U.E. = PUBLIC UTILITY EASEMENT  
R.W. = RIGHT-OF-WAY

**SYMBOL LEGEND**

— BOUNDARY LINE  
--- EASEMENT LINE  
--- RIGHT-OF-WAY CENTERLINE  
--- RIGHT-OF-WAY LINE  
--- TAX PARCEL LINE  
--- OVERHEAD WIRE  
○ FENCE  
● BENCHMARK  
● IRON ROD - CAPPED  
● CONCRETE MONUMENT  
● LIGHT POLE  
● ELECTRIC METER  
● POWER POLE  
--- ASPHALT SURFACE  
--- CONCRETE SURFACE



Tax Parcel 06326-001-000

Prepared By:  
**JBrown**  
Professional Group Inc.  
CHALABENSE - LAND SURVEY - PLANNING  
3000 NW 42nd Ave - Gainesville, Florida 32609  
Phone: 352-399-0000 • Fax: 352-399-0000  
Email: jbrown@jbrownpro.com

THE MAP OF THE PROPERTY DESCRIBED HEREON WAS MADE UNDER MY SUPERVISION AND THIS MAP OF SURVEY FURTHER MEETS THE STANDARDS OF PRACTICE SET FORTH BY THE STATE OF FLORIDA BOARD OF PROFESSIONAL SURVEYORS & MAPPERS IN CHAPTER 464-16, FLORIDA ADMINISTRATIVE CODE, PURSUANT TO SECTION 472.027, FLORIDA STATUTES, AND THE MAP OF SURVEY SHOWN HEREON IS A TRUE AND ACCURATE REPRESENTATION THEREOF TO THE BEST OF MY KNOWLEDGE, BEING SUBJECT TO NOTES AND NOTATIONS SHOWN HEREON.

Florida License No. LS3701  
Certificate of Authorization No. LE8801

TROY V Wright  
TROY V WRIGHT, PSM  
Professional Surveyor and Mapper

NOT VALID WITHOUT THE SIGNATURE AND ORIGINAL PASED SEAL OF FLORIDA LICENSED SURVEYOR & MAPPER OR VALID DIGITAL SIGNATURE IN ELECTRONIC FORM

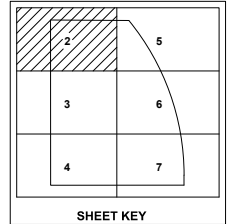
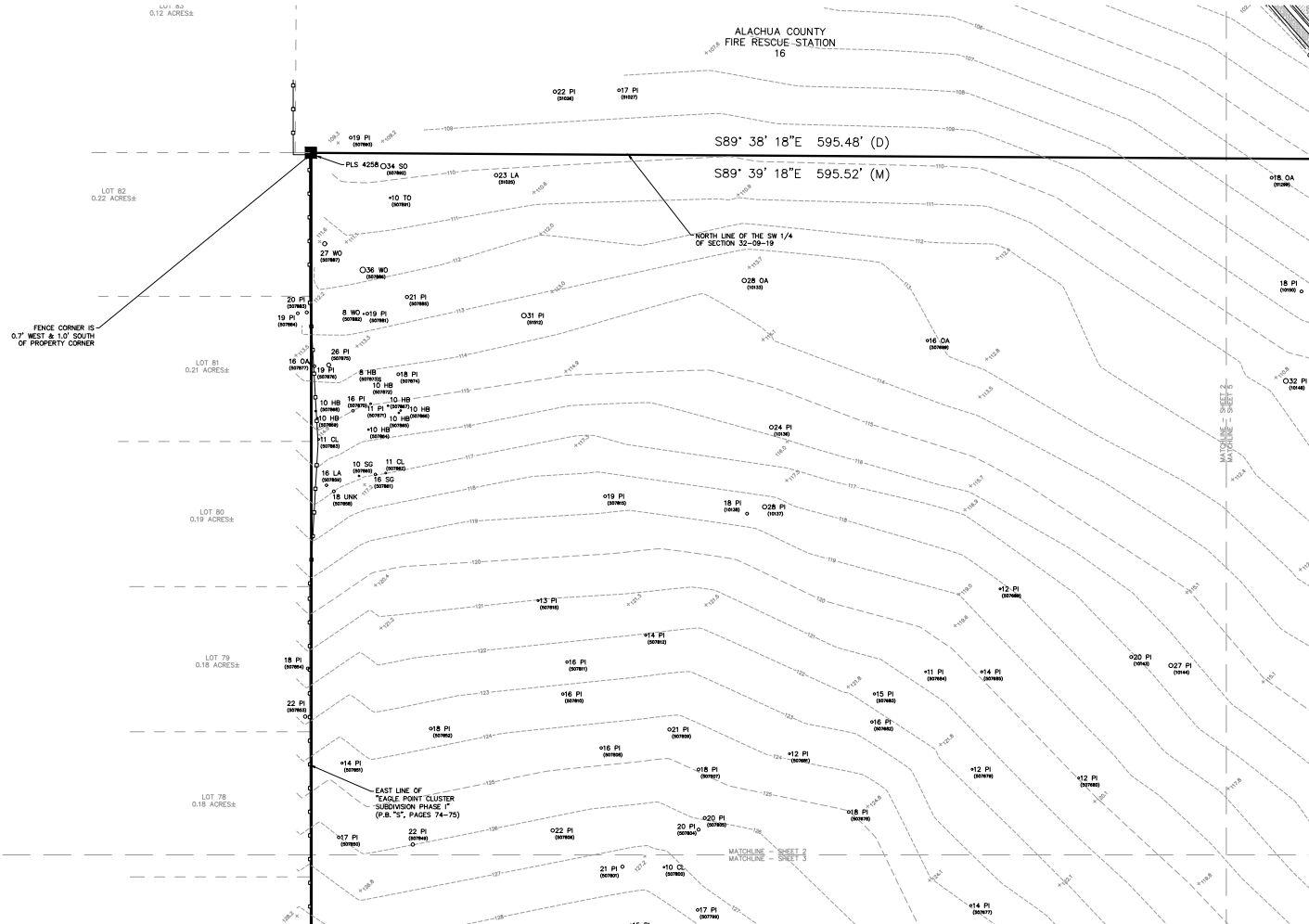
**BOUNDARY & TOPOGRAPHIC SURVEY**

CERTIFIED TO:  
1. NO ACQUISITIONS, LLC, A GEORGIA LIMITED LIABILITY COMPANY  
2. FIRST AMERICAN TITLE INSURANCE COMPANY

Scale: 1"=60'  
Proj. No.: 1403-19-01  
Drawn: T. Wright  
Checked: T. Wright  
Date: 11/09/2019  
Pub Date: 11/09/2019  
Pub Book: 1  
Page: 1  
Sheet: 1 of 7

# BOUNDARY & TOPOGRAPHIC SURVEY

## IN SECTION 32, TOWNSHIP 9 SOUTH, RANGE 19 EAST, ALACHUA COUNTY, FLORIDA



### ABBREVIATIONS

(D) = DEED  
(M) = MEASURED  
ID = IDENTIFICATION  
PLS = PROFESSIONAL LAND SURVEYOR

TREES:  
CL = CHERRY LAUREL  
HB = HACK BERRY  
LA = LAUREL OAK  
OA = LIVE OAK  
PI = PINE  
SG = SWEETGUM  
SO = SHUMARD OAK  
TO = TURKEY OAK  
WO = WATER OAK  
UNK = UNKNOWN

### SYMBOL LEGEND

— BOUNDARY LINE  
— TAX PARCEL LINE  
— FENCE LINE  
— CONCRETE MONUMENT  
— TREE-SIZE (INCHES) AND SPECIES  
— SPOT ELEVATION - SOFT SURFACE  
— CONTOUR LINES



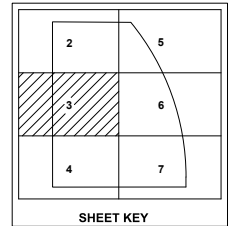
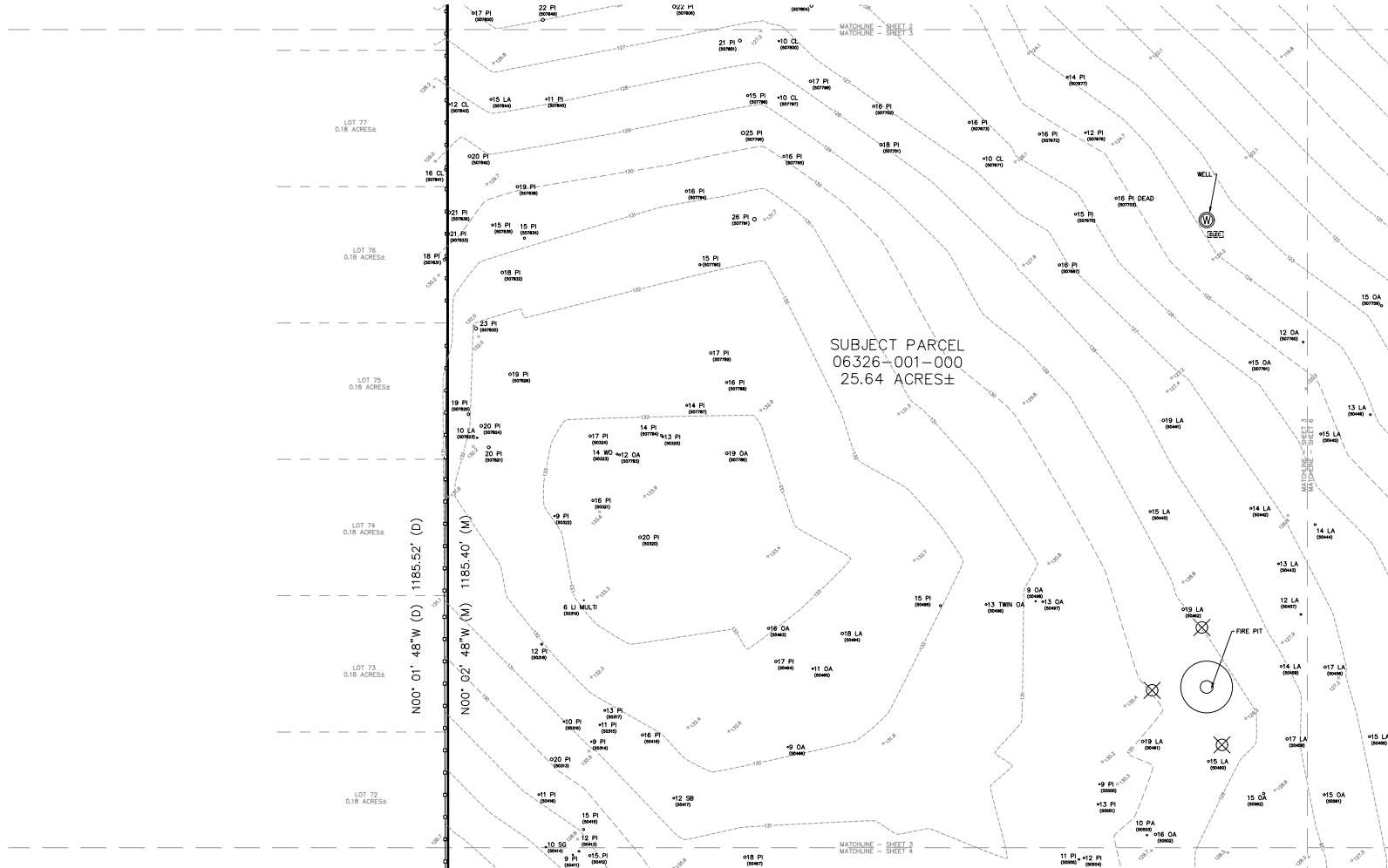
SCALE 1" = 30'

Tax Parcel 06326-001-000

BOUNDARY & TOPOGRAPHIC SURVEY	
<b>JBrown</b> <b>Professional Group, Inc.</b> <b>CHL ENGINEERS - LAND SURVEYORS - PLANNERS</b> <b>2000 W. Highway 100 - Suite 100 - Tallahassee, FL 32304</b> <b>PH: 904.224.1111 - FAX: 904.224.1112</b> <b>EMAIL: jbrown@jbrgroup.com</b>	Scale: 1"=30'
	Proj. No. 2015-01
	Drawn: T. Wright
	Checked: T. Wright
	Des. Date: 05/14/2017
	Draw Date: 06/02/2017
Field Book: N/A	
Placed: N/A	
Sheet: 2 of 7	

# BOUNDARY & TOPOGRAPHIC SURVEY

## IN SECTION 32, TOWNSHIP 9 SOUTH, RANGE 19 EAST, ALACHUA COUNTY, FLORIDA



### ABBREVIATIONS

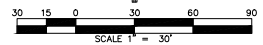
(D) = DEED  
(M) = MEASURED

### TREES:

CL = CHERRY LAUREL  
LA = LAUREL OAK  
LI = LIGUSTRUM  
MULTI = MULTIPLE TRUNKS  
OA = LIVE OAK  
PA = PALM  
PI = PINE  
SB = SUGARBERRY  
SG = SWEETGUM  
WO = WATER OAK

### SYMBOL LEGEND

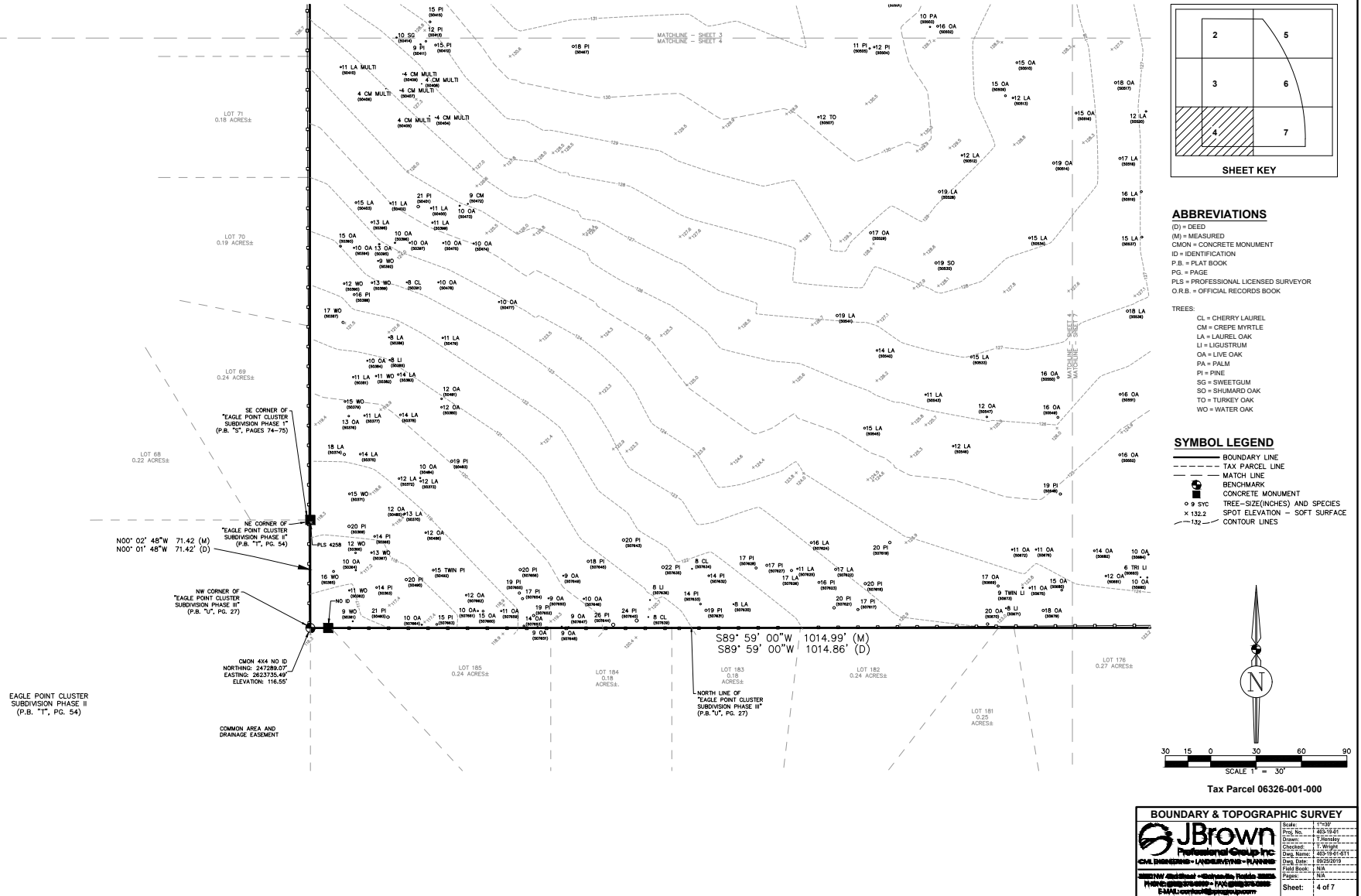
BOUNDARY LINE  
TAX PARCEL LINE  
WELL  
ELECTRIC METER  
LIGHT POLE  
TREE - SIZE (INCHES) AND SPECIES  
× 9.9 SFC  
× 132.2 SPOT ELEVATION - SOFT SURFACE  
- 132 - CONTOUR LINES



Tax Parcel 06326-001-000

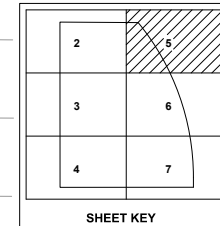
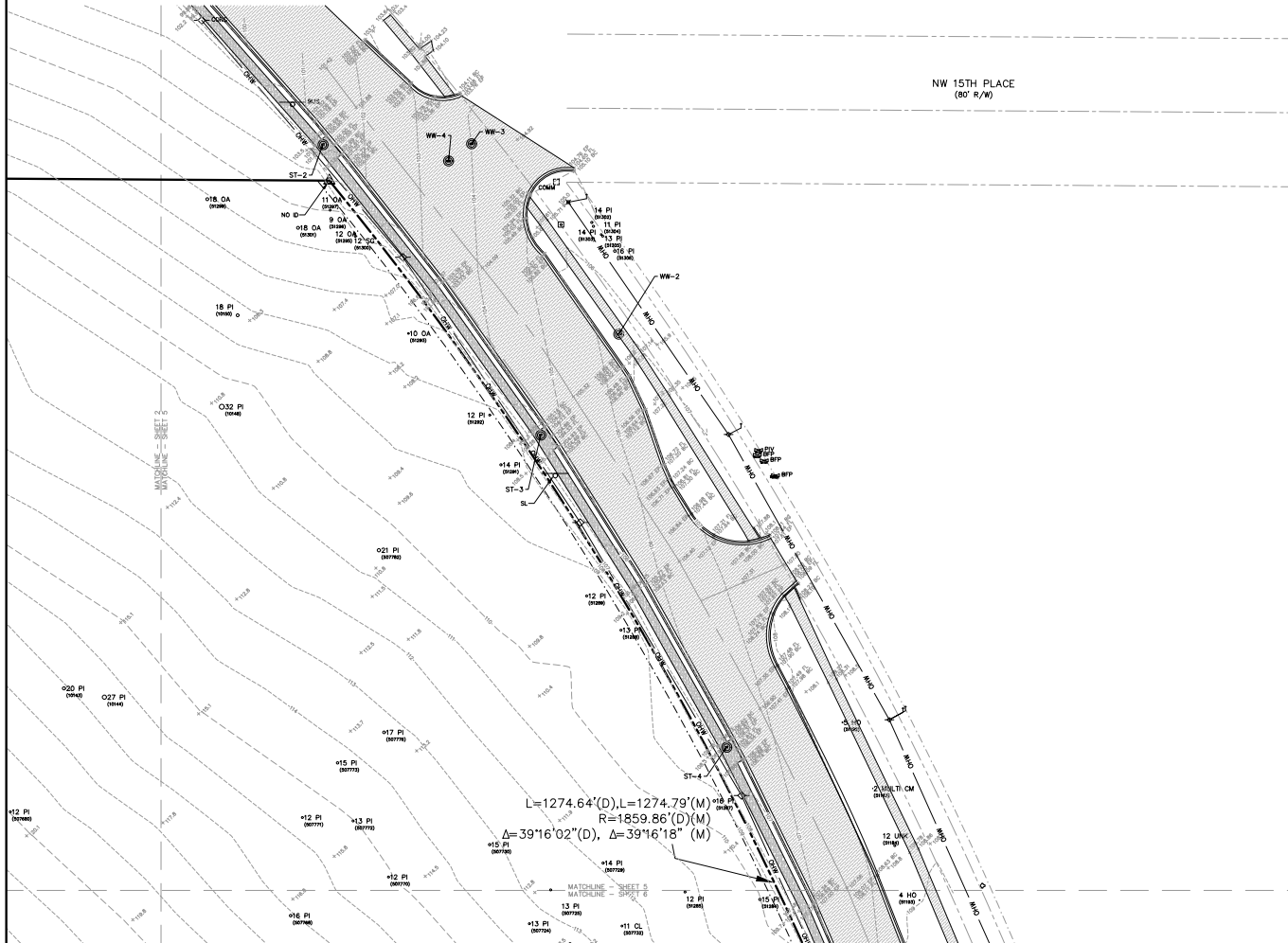
BOUNDARY & TOPOGRAPHIC SURVEY	
<b>JBrown</b>	Scale: 1"=30'
Professional Group, Inc.	Proj. No. 245-19-41
CHL ENGINEERS - LAND SURVEYING - PLANNING	Drawn: T. Sandoz
2021 NW 4th Street - Gainesville, Florida 32608	Checked: T. Wright
Phone: 352-333-7777 - Fax: 352-333-7778	Orig. Date: 02/14/2017
Email: jbrown@jbrngroup.com	Draw Date: 06/20/2019
	Field Book: N/A
	Plots: 0/5
	Sheet: 3 of 7

# BOUNDARY & TOPOGRAPHIC SURVEY IN SECTION 32, TOWNSHIP 9 SOUTH, RANGE 19 EAST, ALACHUA COUNTY, FLORIDA



# BOUNDARY & TOPOGRAPHIC SURVEY

## IN SECTION 32, TOWNSHIP 9 SOUTH, RANGE 19 EAST, ALACHUA COUNTY, FLORIDA



### STORM SEWER SCHEDULE

ST-1(NORTHWEST OF ST-2)  
 RM ELEV = 97.95'  
 NW INV ELEV = 92.29' (30" RCP)  
 SE INV ELEV = 92.27' (24" RCP)  
 BOB ELEV = 92.27'

ST-2  
 RM ELEV = 101.67'  
 NW INV ELEV = 96.77' (24" RCP)  
 SE INV ELEV = 96.81' (24" RCP)  
 BOB ELEV = 96.76'

ST-3  
 RM ELEV = 105.30'  
 NW INV = 100.24' (24" RCP)  
 SE INV = 100.24' (24" RCP)  
 BOB ELEV = 100.14'

ST-4  
 RM ELEV = 106.78'  
 NW INV = 101.70' (24" RCP)  
 SE INV = 101.76' (24" RCP)  
 BOB ELEV = 101.68'

### WASTE WATER SCHEDULE

WW-1  
 RM ELEV = 110.72'  
 NW INV ELEV =  
 SE INV ELEV =  
 BOB ELEV =

WW-2  
 RM ELEV = 106.85'  
 NW INV ELEV =  
 SE INV ELEV =  
 BOB ELEV =

WW-3  
 RM ELEV = 104.11'  
 NW INV =  
 SE INV =  
 BOB ELEV =

WW-4  
 RM ELEV = 103.59'  
 NW INV =  
 SE INV =  
 BOB ELEV =

### ABBREVIATIONS

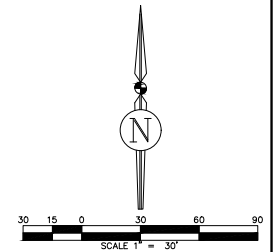
(D) = DEED  
 (L) = ARC LENGTH  
 (M) = MEASURED  
 (R) = RADIUS  
 Δ = DELTA ANGLE  
 BC = BACK OF CURB  
 BFP = BACK FLOW PREVENTER  
 BOB = BOTTOM OF BOX  
 COMM = COMMUNICATIONS  
 CONC. = CONCRETE  
 ELEV = ELEVATION  
 EP = EDGE OF PAVEMENT  
 FL = FLOW LINE  
 ID = IDENTIFICATION  
 INV = INVERT  
 OHW = OVERHEAD WIRE  
 P.B. = PLAT BOOK  
 PG. = PAGE  
 P.U.E. = PUBLIC UTILITIES EASEMENT  
 PIV = POST INDICATING VALVE  
 O.R.B. = OFFICIAL RECORDS BOOK  
 RW = RIGHT OF WAY  
 RCP = REINFORCED CONCRETE PIPE  
 ST = STORM WATER  
 WW = WASTE WATER

### TREES:

CL = CHERRY LAUREL  
 CM = CREPE MYRTLE  
 HO = HOLLY  
 MULTI = MULTIPLE TRUNKS  
 OA = LIVE OAK  
 PI = PINE  
 SG = SWEETGUM  
 UNK = UNKNOWN

### SYMBOL LEGEND

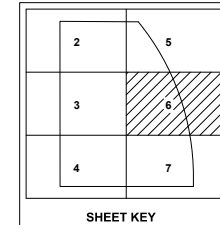
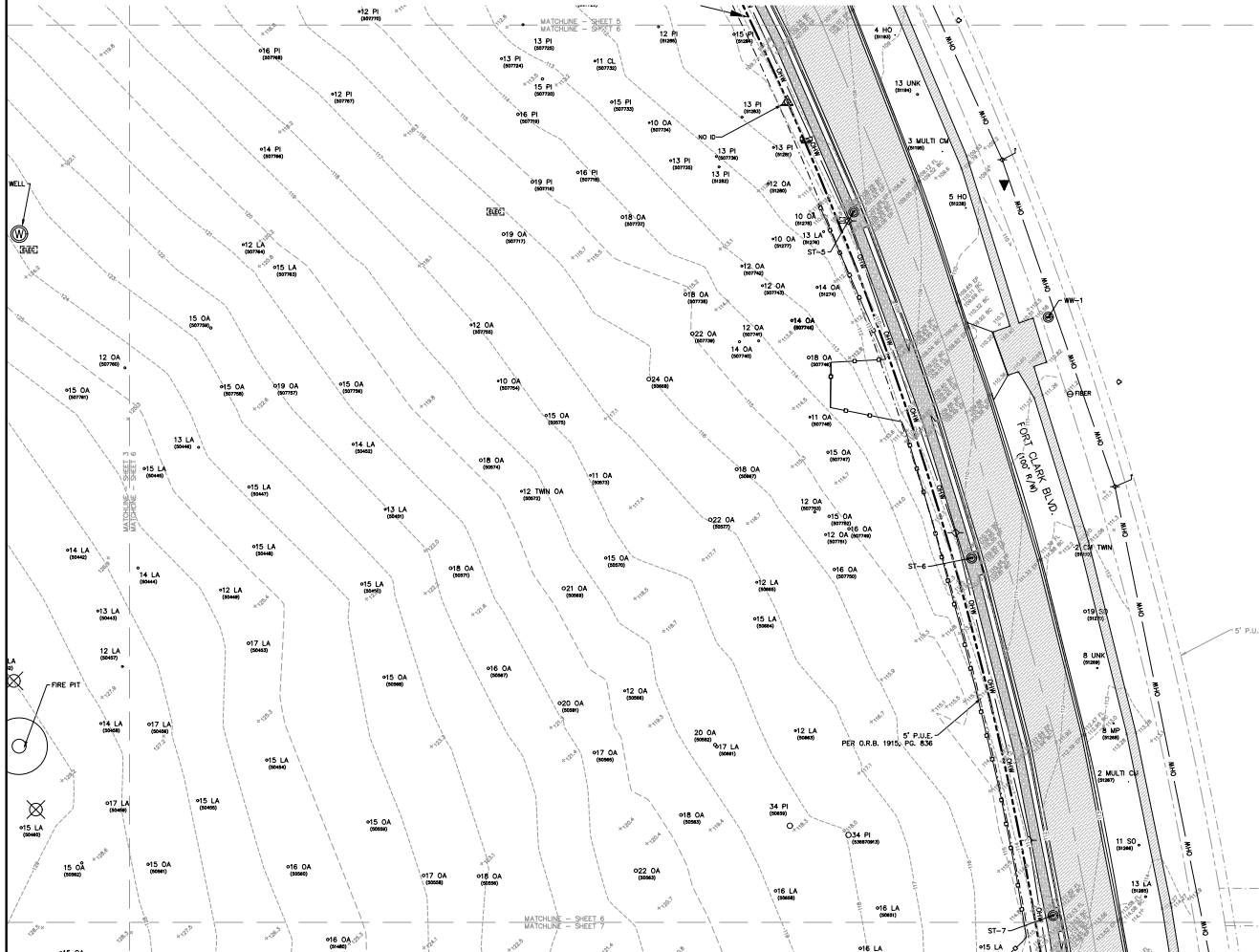
— BOUNDARY LINE  
 - - - EASEMENT LINE  
 - - - RIGHT-OF-WAY CENTERLINE  
 - - - RIGHT-OF-WAY LINE  
 - - - TAX PARCEL LINE  
 - - - MATCH LINE  
 --- OVERHEAD ELECTRIC WIRE  
 Δ IRON ROD - CAPPED  
 ○ 9 S/C TREE-SIZE(INCHES) AND SPECIES  
 x 132.2 SPOT ELEVATION - SOFT SURFACE  
 x 132.21 SPOT ELEVATION - HARD SURFACE  
 --- CONTOUR LINES  
 [Pattern] ASPHALT PAVEMENT  
 [Pattern] CONCRETE PAVEMENT  
 [Symbol] POWER POLE  
 [Symbol] STREET SIGN  
 [Symbol] STORMWATER MANHOLE  
 [Symbol] WASTE WATER MANHOLE  
 [Symbol] TELEPHONE PEDESTAL  
 [Symbol] WIRE PULL BOX  
 [Symbol] WATER VALVE



Tax Parcel 06326-001-000

<b>BOUNDARY &amp; TOPOGRAPHIC SURVEY</b>  <b>JBrown</b> Professional Group, Inc. SURVEYING - LAND SURVEYING - PLANNING 1111 NW 4th Street • Suite 100 • Tallahassee, Florida 32304 PHONE: 904.224.0000 • FAX: 904.224.0001 E-MAIL: jbrown@jbrgroup.com		Scale: 1"=30' Plot No.: 245-19-01 Drawn: T. Smith Checked: T. Wright Date: 02/14/2011 Date: 02/02/2010 Field Book: N/A Pages: N/A Sheet: 5 of 7
---	--	---

# BOUNDARY & TOPOGRAPHIC SURVEY IN SECTION 32, TOWNSHIP 9 SOUTH, RANGE 19 EAST, ALACHUA COUNTY, FLORIDA



**ABBREVIATIONS**  
 BC = BACK OF CURB  
 BOB = BOTTOM OF BOX  
 ELEV = ELEVATION  
 EP = EDGE OF PAVEMENT  
 FL = FLOW LINE  
 ID = IDENTIFICATION  
 INV = INVERT  
 O.R.B. = OFFICIAL RECORDS BOOK  
 OHW = OVERHEAD WIRE  
 PG. = PAGE  
 P.U.E. = PUBLIC UTILITIES EASEMENT  
 RW = RIGHT OF WAY  
 RCP = REINFORCED CONCRETE PIPE  
 WW = WASTE WATER

**TREES:**  
 CL = CHERRY LAUREL  
 CM = CREPE MYRTLE  
 HO = HOLLY  
 LA = LAUREL OAK  
 MP = MAPLE  
 OA = LIVE OAK  
 PI = PINE  
 SO = SHUMARD OAK  
 UNK = UNKNOWN

**SYMBOL LEGEND**  
 ——— BOUNDARY LINE  
 - - - EASEMENT LINE  
 - - - RIGHT-OF-WAY CENTERLINE  
 - - - RIGHT-OF-WAY LINE  
 - - - TAX PARCEL LINE  
 - - - MATCH LINE  
 --- OVERHEAD WIRE  
 Δ IRON ROD - CAPPED  
 ○ 9 5/16 TREE-SIZE (INCHES) AND SPECIES  
 x 132.2 SPOT ELEVATION - SOFT SURFACE  
 x 132.21 SPOT ELEVATION - HARD SURFACE  
 --- CONTOUR LINES  
 [Pattern] ASPHALT PAVEMENT  
 [Pattern] CONCRETE PAVEMENT  
 [Symbol] POWER POLE  
 [Symbol] LIGHT POLE  
 [Symbol] ELECTRIC METER  
 [Symbol] WIRE PULL BOX  
 [Symbol] STREET SIGN  
 [Symbol] STORMWATER MANHOLE  
 [Symbol] WELL  
 [Symbol] WATER VALVE  
 [Symbol] TRANSFORMER  
 [Symbol] FIRE HYDRANT  
 [Symbol] UTILITY MARKER

## STORM SEWER SCHEDULE

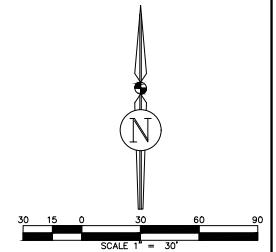
ST-5  
 R/W ELEV = 108.40'  
 NW INV ELEV = 103.00' (24" RCP)  
 SE INV ELEV = 103.14' (18" RCP)  
 BOB ELEV = 102.98'

ST-6  
 R/W ELEV = 110.90'  
 NW INV ELEV = 106.55' (18" RCP)  
 SE INV ELEV = 106.60' (15" RCP)  
 BOB ELEV = 106.50'

ST-7  
 R/W ELEV = 113.10'  
 NW INV = 108.55' (15" RCP)  
 SE INV = 108.60' (15" RCP)  
 BOB ELEV = 108.45'

## WASTE WATER SCHEDULE

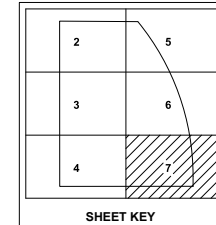
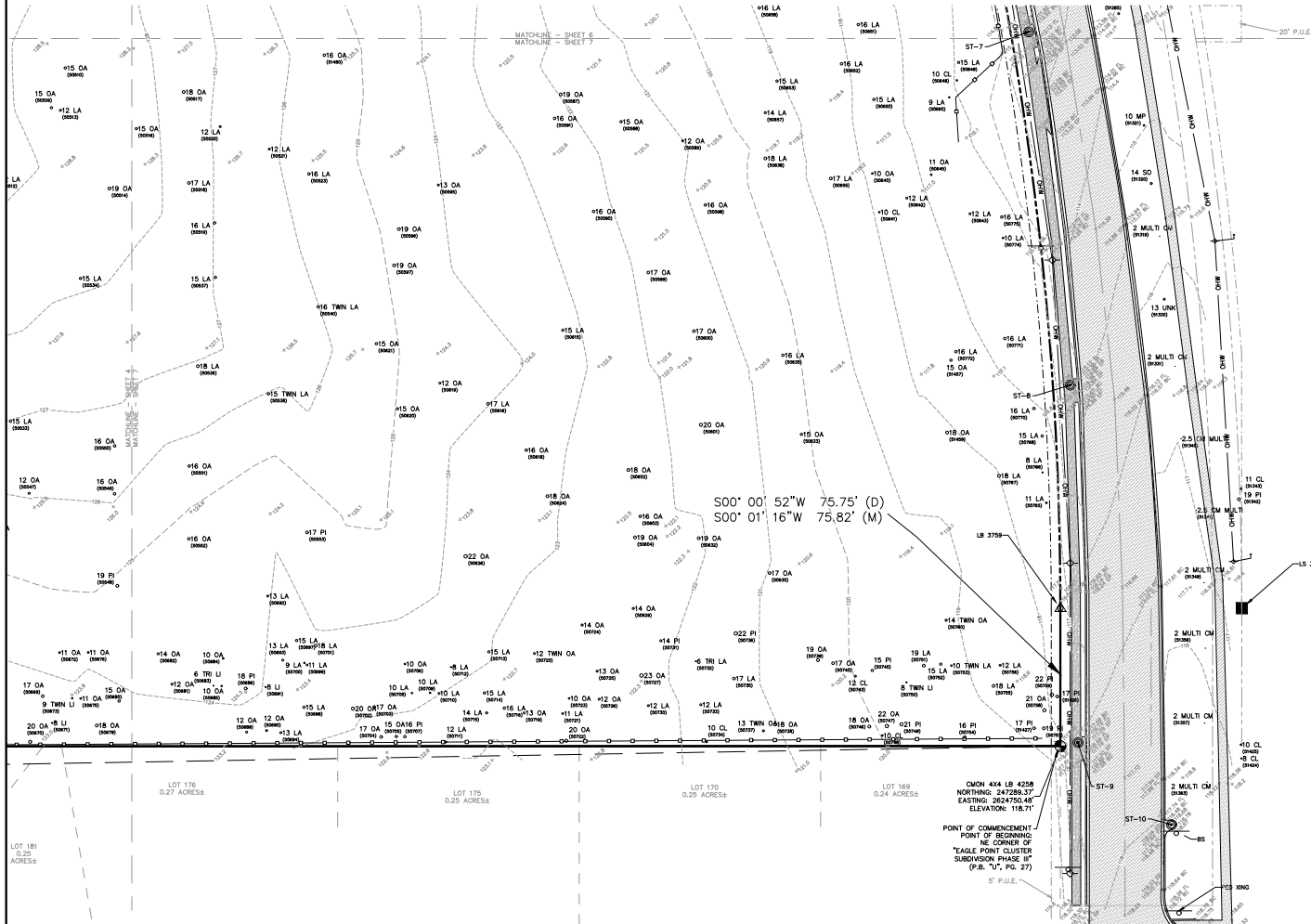
WW-1  
 R/W ELEV = 110.72'  
 NW INV ELEV =  
 SE INV ELEV =  
 BOB ELEV =



Tax Parcel 06326-001-000

BOUNDARY & TOPOGRAPHIC SURVEY	
 <b>JBrown</b> Professional Group, Inc. C.S. ENGINEERS - LAND SURVEYORS - PLANNERS 11111 Highway 19 North • Suite 100 • Tallahassee, Florida 32310 Phone: 904-251-1111 • Fax: 904-251-1112 Email: jbrown@jbrgroup.com	Scale: 1"=30' Plot No.: 245-19-41 Drawn: T. Wright Checked: T. Wright Date: 05/14/2011 Date: 06/03/2010 Field Book: N/A Pages: N/A
	Sheet: 6 of 7

# BOUNDARY & TOPOGRAPHIC SURVEY IN SECTION 32, TOWNSHIP 9 SOUTH, RANGE 19 EAST, ALACHUA COUNTY, FLORIDA



## STORM SEWER SCHEDULE

ST-8  
RIM ELEV = 115.31'  
NW INV ELEV = 110.85' (15" RCP)  
SE INV ELEV = 111.91' (6" PVC)  
S INV ELEV = 110.91' (15" RCP)  
BOB ELEV = 110.82'

ST-9  
RIM ELEV = 117.64'  
N INV ELEV = 113.24' (15" RCP)  
SE INV ELEV = 113.38' (12" RCP)  
S INV ELEV = 114.04' (6" PVC)  
BOB ELEV = 113.29'

ST-10  
RIM ELEV = 118.64'  
NW INV ELEV = 114.19' (12" RCP)  
BOB ELEV = 114.14'

## ABBREVIATIONS

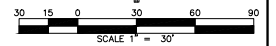
(D) = DEED  
(M) = MEASURED  
BC = BACK OF CURB  
BOB = BOTTOM OF BOX  
CMON = CONCRETE MONUMENT  
ELEV = ELEVATION  
EP = EDGE OF PAVEMENT  
FL = FLOWLINE  
INV = INVERT  
LB = LICENSED SURVEYING BUSINESS  
LS = LICENSED SURVEYOR  
OHW = OVERHEAD WIRE  
P.B. = PLAT BOOK  
PG. = PAGE  
P.U.E. = PUBLIC UTILITIES EASEMENT  
PVC = POLYVINYL CHLORIDE PIPE  
RCP = REINFORCED CONCRETE PIPE

## TREES:

CL = CHERRY LAUREL  
CM = CREPE MYRTLE  
LA = LAUREL OAK  
LI = LIGUSTRUM  
MP = MAPLE  
OA = LIVE OAK  
PI = PINE  
SD = SHUMARD OAK  
TRI = TRIPLE  
UNK = UNKNOWN

## SYMBOL LEGEND

--- BOUNDARY LINE  
--- EASEMENT LINE  
--- RIGHT-OF-WAY CENTERLINE  
--- RIGHT-OF-WAY LINE  
--- TAX PARCEL LINE  
--- MATCH LINE  
--- OVERHEAD ELECTRIC WIRE  
--- FENCE LINE  
--- BENCHMARK  
--- IRON ROD = CAPPED  
--- CONCRETE MONUMENT  
--- TREE-SIZE(INCHES) AND SPECIES  
--- 132.2 SPOT ELEVATION - SOFT SURFACE  
--- 132.21 SPOT ELEVATION - HARD SURFACE  
--- 132 CONTOUR LINES  
--- ASPHALT PAVEMENT  
--- CONCRETE PAVEMENT  
--- POWER POLE  
--- STREET SIGN  
--- STORMWATER MANHOLE



Tax Parcel 06326-001-000

BOUNDARY & TOPOGRAPHIC SURVEY	
<b>JBrown</b> Professional Group, Inc. CIVIL ENGINEERS - LAND SURVEYORS - PLANNERS 10000 4th Street, Suite 200, Ft. Myers, FL 33905 PHONE: 888-888-8888 - FAX: 888-888-8888 EMAIL: jbrown@jbrgroup.com	Scale: 1"=30' Plot No.: 245-19-01 Drawn: T. Brown Checked: T. Brown Date: 05/14/2011 Date: 06/03/2010 Plot Book: N/A Pages: 7 of 7