



# Central Receiving System of Care

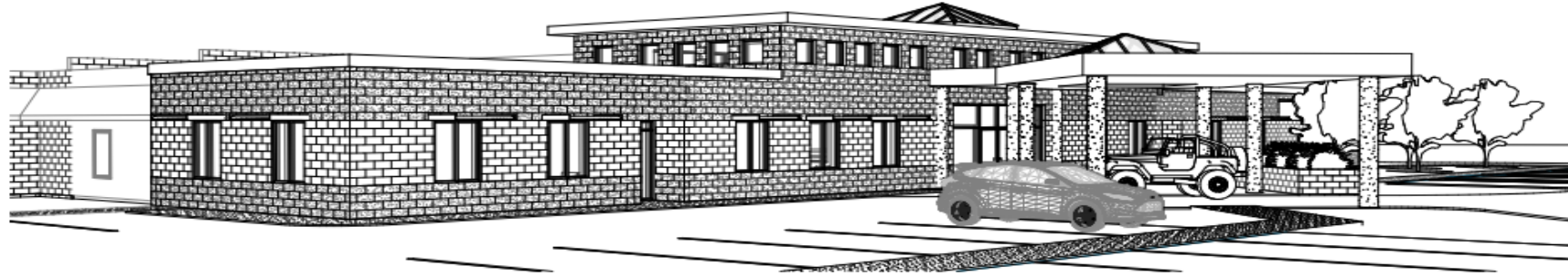
**ALACHUA  
COUNTY**

# CRS FACILITY WORK PLAN

County Funding Contract for Construction is Finalized – 12/2022  
Legislative Funds – Appropriated  
City of Gainesville Contract is moving through legal – In Process

Construction is in “Bid Process” – Bid Packet will be released on 5/1/2023

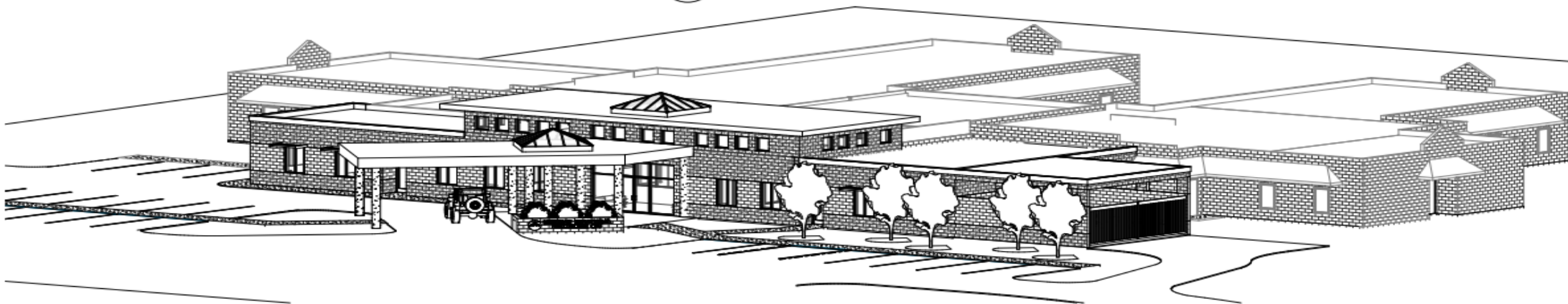
Current estimate is that construction will be completed  
by 6/30/2024



1 PERSPECTIVE - LOOKING NORTHEAST  
A2 SCALE:



2 PERSPECTIVE - LOOKING NORTHWEST  
A2 SCALE:



3D VIEW OF THE NEW ADDITION ALONG THE  
SOUTH SIDE OF THE BUILDING

3  
A2 SCALE:

## Funding

Contract with the County of Alachua for first year operating funds was signed 12/2022

State recurring operating funding is currently under consideration in both the Senate and House

## Central Receiving Advisory Council

Initial meetings have taken place with partner Behavioral Health Hospitals

Next Steps:

Development of MOUs with the Behavioral Health Hospitals - in process

Development of Model for Bed Utilization between partners

Enhance Referral Process amongst partners

Transportation Plan Changes

Development of enhanced diversion options and other innovative care models

- 23 Hour Observation
- Emergency Room “Bridge Programs”
- “No Wrong Door” Access to Care

# ADVISORY COUNCIL

Healthcare	Law Enforcement	Fire / Rescue	Community Partners
Meridian	ACSO	Alachua	Lutheran Services Florida
North Florida Regional	GPD	Gainesville	Eighth Judicial Circuit
UF Health	Other Agency from within Alachua County *		NAMI Gainesville
Veterans Administration	County Sheriff from surrounding County *		Alachua County Community Services

\* One agency, rotate as needed based on focus areas of need or concern