



Unified Land Development Code Revisions: Rural Commercial - Agriculture

July 14, 2020

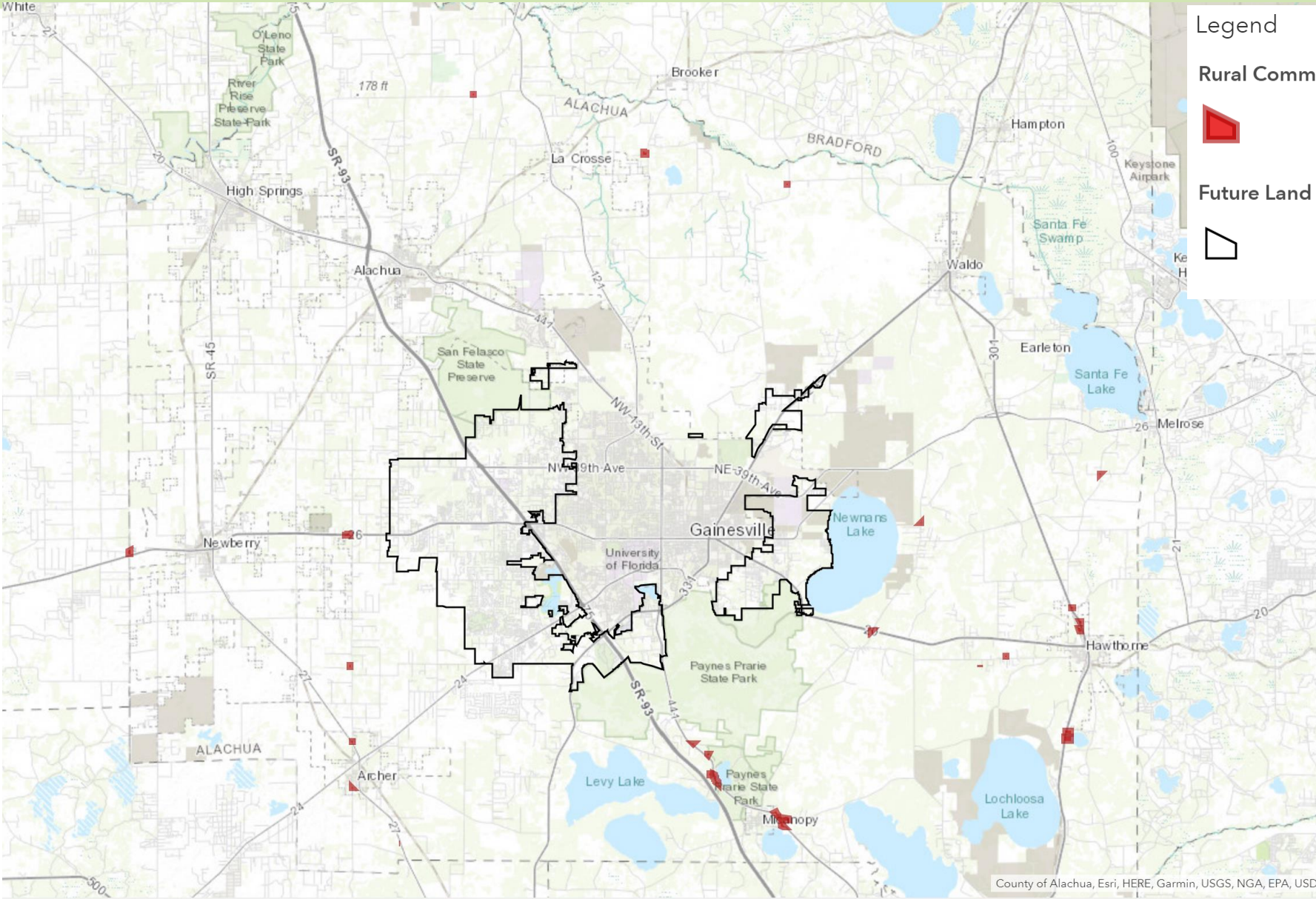
**Alachua County Board of County
Commissioners**

Growth Management



Rural Agriculture-Commercial Future Land Use

43 Parcels
134 Acres



ULDC Amendment

- Many standards (lighting, landscaping, etc) have been updated since the adoption of these policies.
- Staff focused on use, design, access, parking as areas that needed special attention to be consistent with compatibility in the rural area with less intensive uses and adjacent communities.

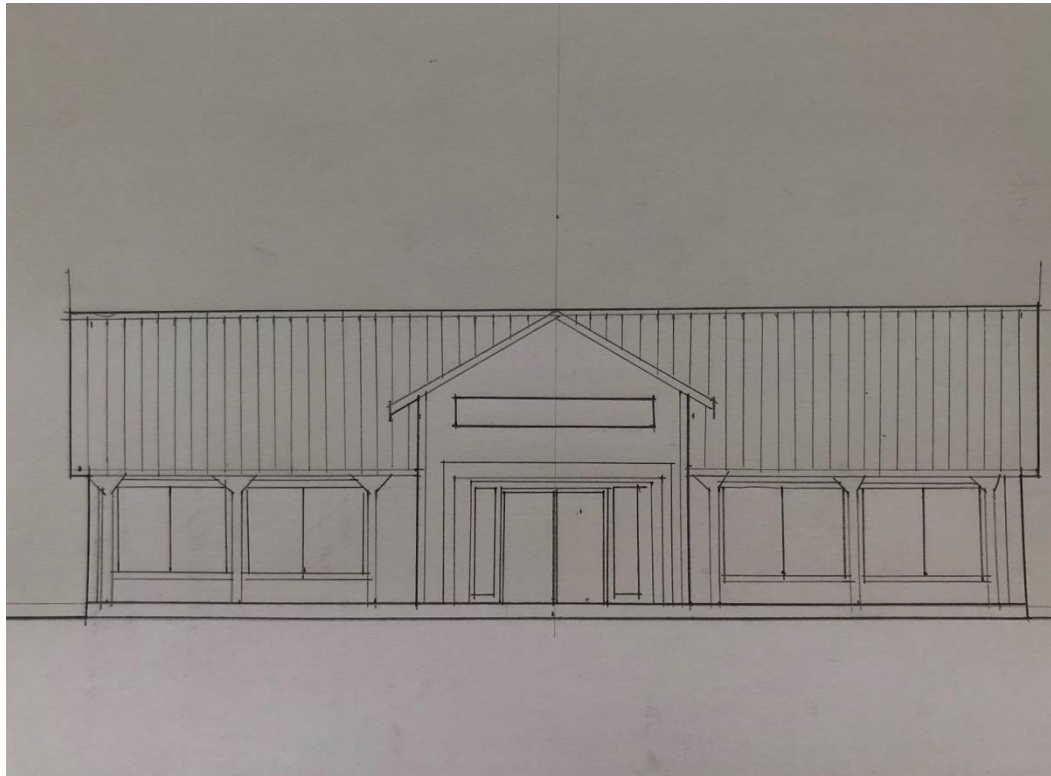


Standards

- Section 405.49 Limits access onto Collectors and Arterials and provides for cross access between non-residential parcels
- Section 407.50 – Provides for uses consistent with FLU Policy 3.11.1(d).
- Section 407.52 – Limits parking for Retail Sales and Service to 4 spaces per 1,000 sq ft. (The general standard maximum for retail sales and service is 5.5 spaces per 1,000).

Standards

- Section 405.51 details Design Standards



Staff Recommendation

- **Approve Ordinance 20-XX as proposed.**

