

Alachua County Florida
Recovery Plan

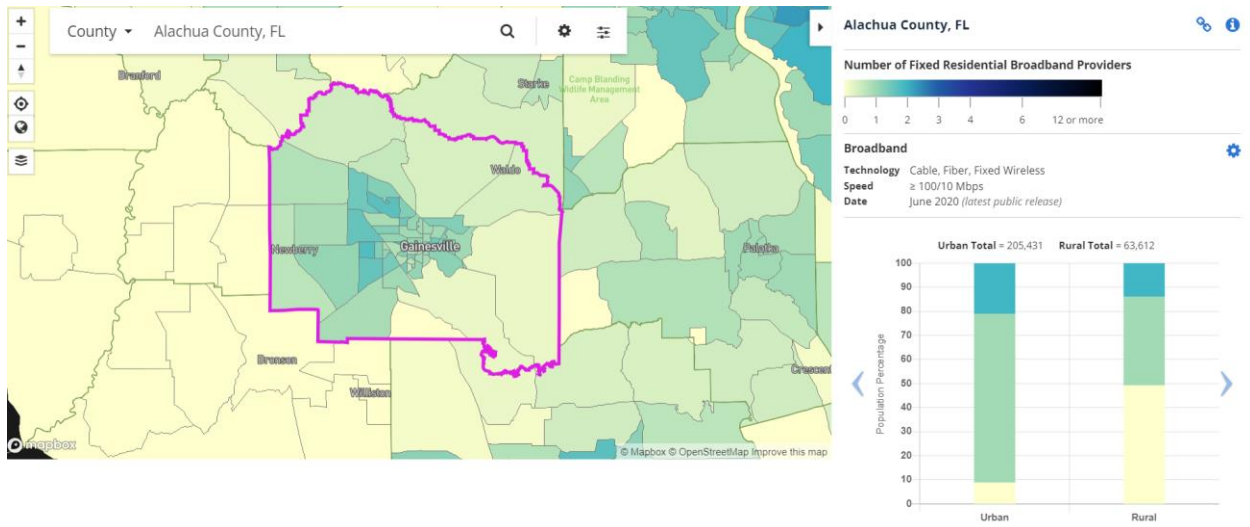
American Rescue Plan

**State and Local Fiscal Recovery
Funds**

Alachua County Broadband – County-
wide Residential

Executive Summary

In response to the COVID-19 Pandemic, the Federal government has provided Alachua County funding through the American Rescue Plan – State and Local Fiscal Recovery Funds. One Category of response is Broadband Infrastructure (5.16 and 5.17). During the pandemic it became apparent that the need for the ability Telemedicine, Telework and home based education opportunities was inequitable in access and affordability. Based on information from the FCC Fixed Broadband Deployment site (<https://broadbandmap.fcc.gov/>) as of June2020, excluding satellite ISP, over 49% of the 63,612 rural residential units have less than 100/10 mbps speed. (See map below)



Uses of Funds

The ABoCC allocation to create equity in Broadband access and affordability for unserved and underserved population is \$15 Million. In addition to these funds, the County will collaborate with local cities, school board, colleges and UF to understand the entirety of the impact on unserved and underserved communities. The County intends to also leverage these dollars with ISP to acquire match funding, as well as possible FCC and USDA grants.

Promoting equitable outcomes

The final project approval will include:

- Speeds/pricing tiers to be offered, including the speed/pricing of its affordability offering
- Technology to be deployed
- Miles of fiber
- Cost per mile
- Cost per passing
- Number of households projected to have increased access to broadband meeting the minimum speed standards in areas that previously lacked access to service of at least 25 Mbps download and 3 Mbps upload
 - Number of households with access to minimum speed standard of reliable 100 Mbps symmetrical upload and download
 - Number of households with access to minimum speed standard of reliable 100 Mbps download and 20 Mbps upload
- Number of institutions and businesses projected to have increased access to broadband meeting the minimum speed standards in areas that previously lacked access to service of at least 25 Mbps download and 3 Mbps upload, in each of the following categories: business, small business, elementary school, secondary school, higher education institution, library, healthcare facility, and public safety organization
 - Specify the number of each type of institution with access to the minimum speed standard of reliable 100 Mbps symmetrical upload and download; and
 - Specify the number of each type of institution with access to the minimum speed standard of reliable 100 Mbps download and 20 Mbps upload

Projects related to promoting equitable outcomes are under development.

In this section, describe efforts to date and intended outcomes to promote equity. Each annual report to follow must provide an update, using qualitative and quantitative data, on how the recipients' approach achieved or promoted equitable outcomes or progressed against equity goals during the performance period.

Describe efforts to promote equitable outcomes, including how programs were designed with equity in mind. Include how your jurisdiction will consider and measure equity at the various stages of the program, including:

- a. *Goals: Are there particular historically underserved, marginalized, or adversely affected groups that you intend to serve?*
- b. *Awareness: How equal and practical is the ability for residents or businesses to become aware of the services funded by the SLFRF?*
- c. *Access and Distribution: Are there differences in levels of access to benefits and services across groups? Are there administrative requirements that result in disparities in ability to complete applications or meet eligibility criteria?*
- d. *Outcomes: Are intended outcomes focused on closing gaps, reaching universal levels of service, or disaggregating progress by race, ethnicity, and other equity dimensions where relevant for the policy objective?*

Describe your jurisdiction's efforts to date and intended outcomes to promote equity using qualitative and quantitative data on how the jurisdiction's approach achieved or promoted equitable outcomes or progressed against equity goals. Describe any constraints or challenges that impacted project success in terms of increasing equity.

Describe the geographic and demographic distribution of funding, including whether it is targeted toward traditionally marginalized communities.

Labor Practices

The final project plan for Broadband infrastructure will address labor practices in their plans during ABoCC adoption. It will include, when possible, how the project is using strong labor standards to promote effective and efficient delivery of high-quality infrastructure while also supporting the economic recovery through strong employment opportunities for workers. For example: project labor agreements, community benefits agreements, prevailing wage requirements, and local hiring.

Project Inventory

The project has not started to date.

Upon final approval of the project, the following information will be maintained

Project [Identification Number]: [Project Name]

Funding amount: [Funding amount]

Project Expenditure Category: [Category number, Category Name]

Project overview

- *A description of the project that includes an overview of the main activities of the project, the approximate timeline, primary delivery mechanisms and partners, if applicable, and intended outcomes.*
- *Link to the website of the project if available*
- *How project contributes to addressing climate*

Performance_Report

Goals, measures, outputs and outcomes will be prepared during project development and tracked as the projects are implemented. No broadband projects have been started.

- *For the Project Inventories in Section 8, include key performance indicators for your jurisdiction's major SLFRF funded projects. Report key performance indicators for each project, or group projects with substantially similar goals and the same outcome measures. Jurisdictions may choose to include some indicators for each individual project as well as crosscutting indicators. Include both output and outcome measures. See Section C(9) on page 27 of the Reporting Guidance for additional information.*