

| TREE CLEARING DATA | | |
|----------------------------|----------------|-------|
| EXISTING CANOPY AREA: | 3,135,360 S.F. | 100% |
| EXISTING CANOPY TO REMAIN: | 1,269,011 S.F. | 40.5% |

LEGEND

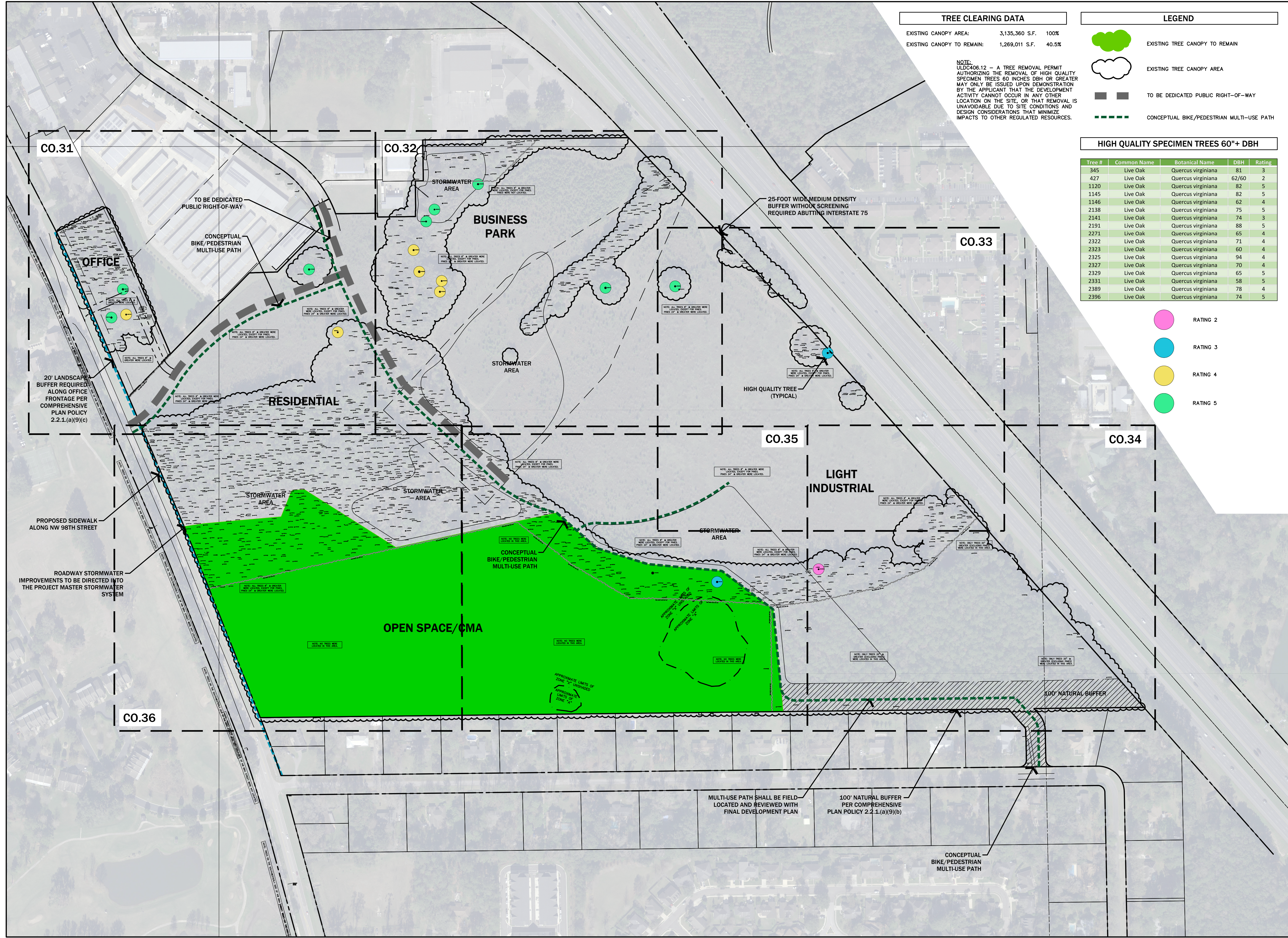
- EXISTING TREE CANOPY TO REMAIN
- EXISTING TREE CANOPY AREA
- TO BE DEDICATED PUBLIC RIGHT-OF-WAY
- CONCEPTUAL BIKE/PEDESTRIAN MULTI-USE PATH

NOTE:
 ULDC406.12 - A TREE REMOVAL PERMIT AUTHORIZING THE REMOVAL OF HIGH QUALITY SPECIMEN TREES 60 INCHES DBH OR GREATER MAY ONLY BE ISSUED UPON DEMONSTRATION BY THE APPLICANT THAT THE DEVELOPMENT ACTIVITY CANNOT OCCUR IN ANY OTHER LOCATION ON THE SITE, OR THAT REMOVAL IS UNAVOIDABLE DUE TO SITE CONDITIONS AND DESIGN CONSIDERATIONS THAT MINIMIZE IMPACTS TO OTHER REGULATED RESOURCES.

HIGH QUALITY SPECIMEN TREES 60"+ DBH

| Tree # | Common Name | Botanical Name | DBH | Rating |
|--------|-------------|--------------------|-------|--------|
| 345 | Live Oak | Quercus virginiana | 81 | 3 |
| 427 | Live Oak | Quercus virginiana | 62/60 | 2 |
| 1120 | Live Oak | Quercus virginiana | 82 | 5 |
| 1145 | Live Oak | Quercus virginiana | 82 | 5 |
| 1146 | Live Oak | Quercus virginiana | 62 | 4 |
| 2138 | Live Oak | Quercus virginiana | 75 | 5 |
| 2141 | Live Oak | Quercus virginiana | 74 | 3 |
| 2191 | Live Oak | Quercus virginiana | 88 | 5 |
| 2271 | Live Oak | Quercus virginiana | 65 | 4 |
| 2322 | Live Oak | Quercus virginiana | 71 | 4 |
| 2323 | Live Oak | Quercus virginiana | 60 | 4 |
| 2325 | Live Oak | Quercus virginiana | 94 | 4 |
| 2327 | Live Oak | Quercus virginiana | 70 | 4 |
| 2329 | Live Oak | Quercus virginiana | 65 | 5 |
| 2331 | Live Oak | Quercus virginiana | 58 | 5 |
| 2389 | Live Oak | Quercus virginiana | 78 | 4 |
| 2396 | Live Oak | Quercus virginiana | 74 | 5 |

- RATING 2
- RATING 3
- RATING 4
- RATING 5



eda
 consultants inc.
 EB 2389
 720 S.W. 2nd Ave, South Tower, Suite 300
 GAINESVILLE, FLORIDA 32601
 TEL: (352) 373-3541
 www.edatl.com mail@edatl.com

NORTH
 SCALE: 1" = 150'
 0 75 150 300
 GRAPHIC SCALE

| No. | Date | Comment |
|-----|------|---------|
| | | |
| | | |
| | | |
| | | |
| | | |
| | | |
| | | |
| | | |
| | | |
| | | |

Professional Engineer of Record:
 Sergio J. Reyes, P.E. 47311
 Engineer Certificate No.
 Project No: 19-068
 Project phase: PRELIMINARY DEVELOPMENT PLAN
 Project title:

SPRINGHILLS - SW QUADRANT
 Sheet title: TREE PRESERVATION PLAN

Designed: SJR Sheet No.:
 Drawn: MJS
 Checked: CBS
 Date: 04/15/21
C0.30

I:\server3\eng\projects\PREIT - SW Quad\Plans\Current\DWG\FDP\19068\FDP1.dwg, C0.30 TREE PRESERVATION PLAN, 4/28/2021 3:49:37 PM, TAR, DWG To PDF.pc3