



# Commission Redistricting

## Draft Map Public Workshop

Chris Dawson, AICP  
Transportation Planning Mgr

## Background

- Florida Constitution Article VIII Section 1(e) COMMISSIONERS
  - Except when otherwise provided by county charter, the governing body of each county shall be a board of county commissioners composed of five or seven members serving staggered terms of four years. After each decennial census the board of county commissioners shall divide the county into districts of contiguous territory as nearly equal in population as practicable. One commissioner residing in each district shall be elected as provided by law.
- §124.01(3) Florida Statutes
  - The board of county commissioners shall from time to time, fix the boundaries of the above districts so as to keep them as nearly equal in proportion to population as possible; provided, that changes made in the boundaries of county commissioner districts pursuant to this section shall be made only in odd-numbered years.

## Background

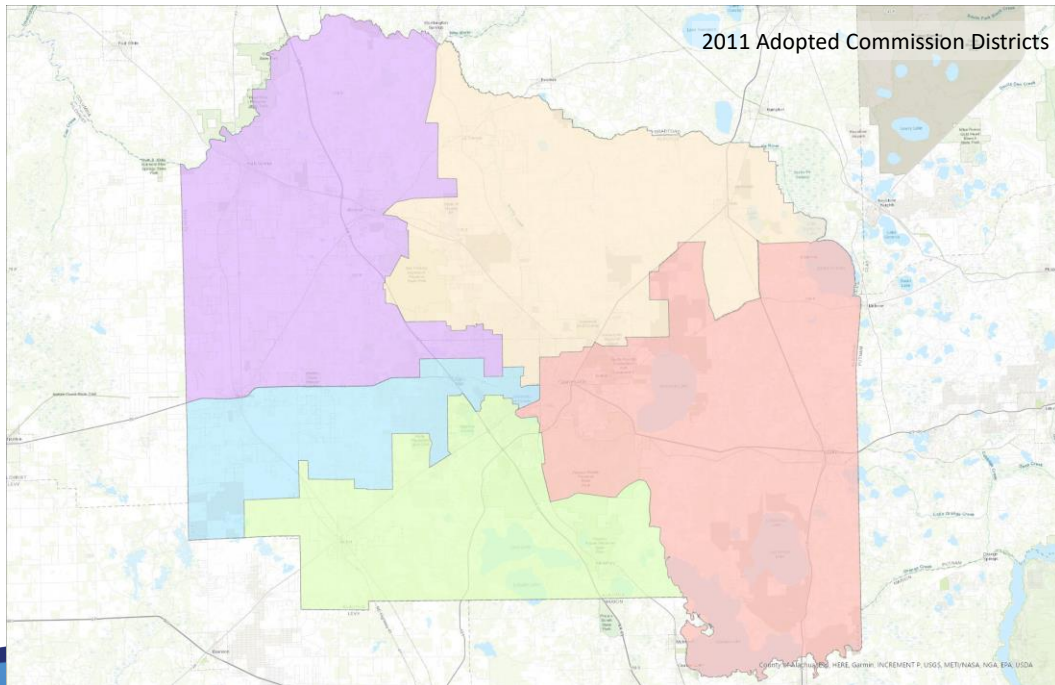
- §124.02 Florida Statutes
  - New boundaries entered into minutes, and a certified copy published once a week for two weeks in a newspaper published in the County
  - Proof of such publication or posting shall be entered on the minutes of the board. The publication or posting of such copy shall be for information only and shall not be jurisdictional.
- §124.03 Florida Statutes
  - Furnish a copy to the Department of State

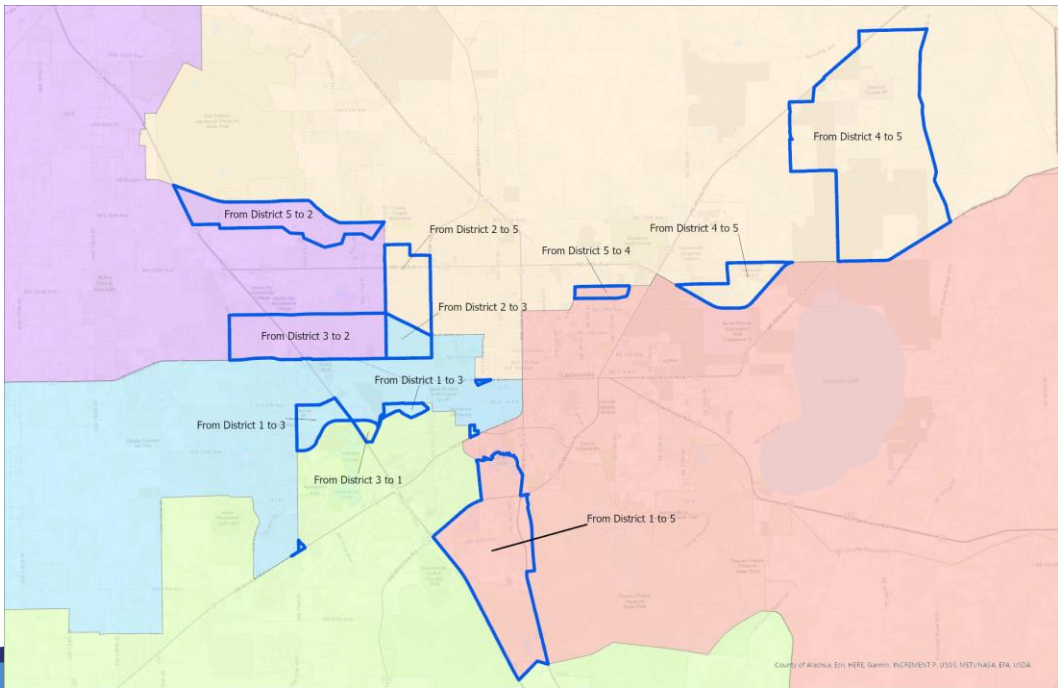
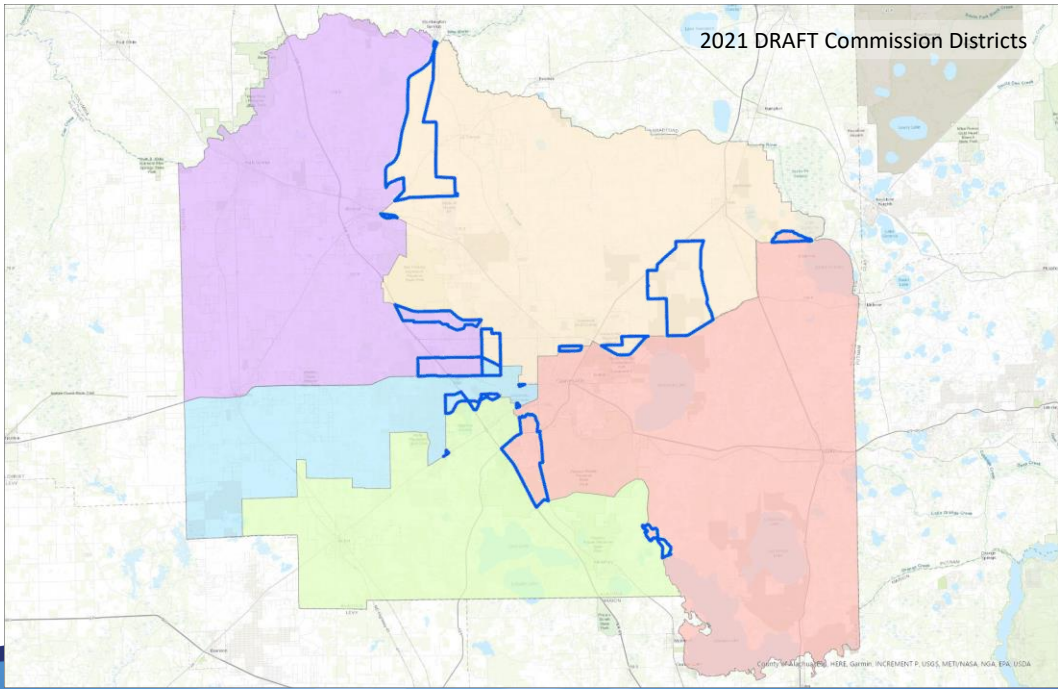
## Census Data 2010 to 2020

Data Variable	2010	2020	Change 2010-2020 (%)
Population	247,336	278,468	12.6%
Total Housing Units	112,766	123,359	9.39%
Occupied	100,516 (89.1%)	112,723 (91.4%)	12.1%
Vacant	12,250 (10.9%)	10,636 (8.6%)	-13.2%
Average Persons/HU	2.19	2.25	2.74%
Average Persons/OHU	2.46	2.47	0.4%

# Average Persons per District

Year	Total Population	Average per District
2010	247,336	49,467
2020	278,468	55,694

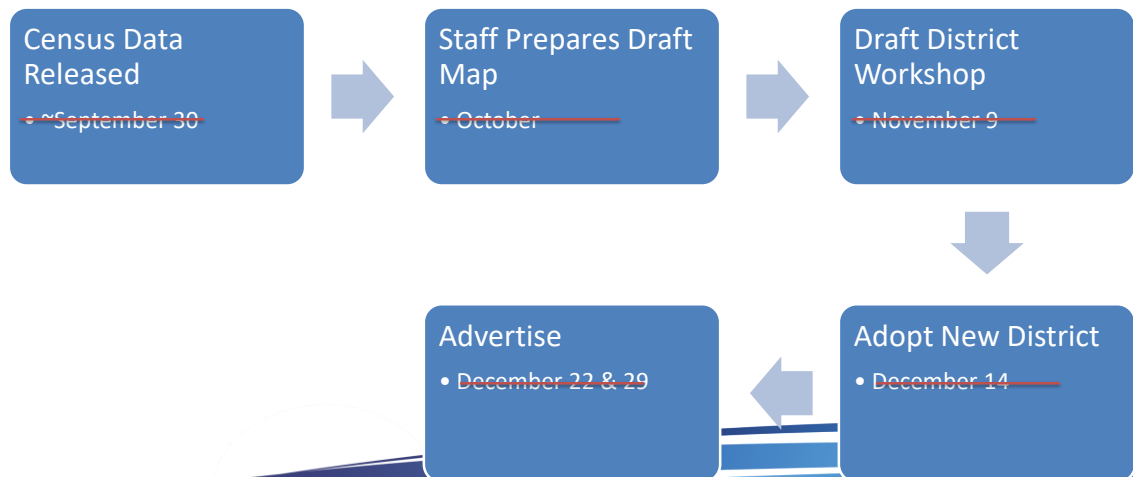




## Actual Persons per District

District	2010		2020	
	Actual Population	Variance from Avg	Actual Population	Variance from Avg
1	50,759	2.6%	55,742	<.01%
2	48,423	-2.1%	55,893	0.36%
3	49,308	-0.3%	55,346	-0.62%
4	49,498	.06%	55,896	0.36%
5	49,348	-.02%	55,591	-0.18%

## Timeline



## Staff Recommendation

- Direct Staff to Finalize New District Maps, Prepare and advertise an Ordinance and return for an adoption hearing

