

CONTAINING 8.49 ACRES, MORE OR LESS.

LB 2389  
2404 N.W. 43rd ST, GAINESVILLE, FLORIDA 32606-6602  
TEL. (352) 373-3541 FAX. (352) 373-7249  
E-MAIL: mail@edafll.com

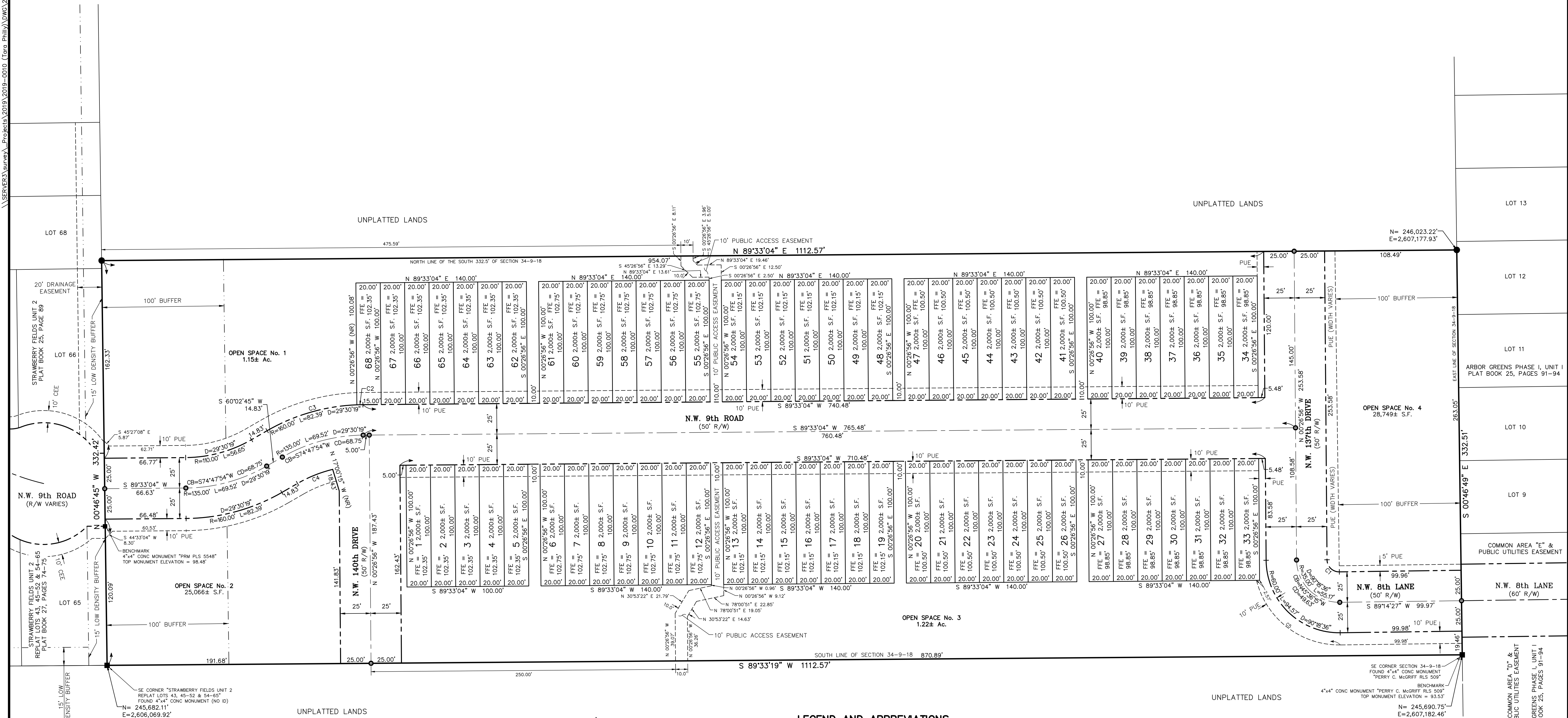
\\SERVER3\survey\Projects\2019-2010 (Tara Philp)\DWG\2019-2010\301\_Platdwn - Sheet2

Plotted Jun. 26, 2019 - 15:42:23 - abonte

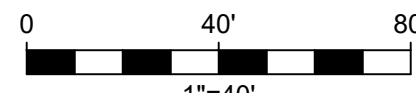
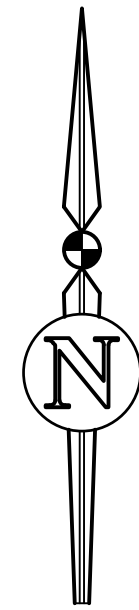
# TARA GREENS

LYING IN SECTION 34, TOWNSHIP 9 SOUTH, RANGE 18 EAST,  
INSIDE THE ARREDONDO GRANT, ALACHUA COUNTY, FLORIDA

PLAT BOOK \_\_\_\_, PAGE \_\_\_\_  
SHEET 2 OF 2



Curve Table					
Curve #	Delta	Radius	Arc	Chord	Tangent
C1	90°18'36"	10.00'	15.76'	14.18'	10.05'
C2	1°47'27"	160.00'	5.00'	5.00'	2.50'
C3	27°42'52"	160.00'	77.39'	76.64'	39.47'
C4	16°14'03"	110.00'	31.17'	31.06'	15.69'
C5	76°44'42"	70.00'	93.76'	86.91'	55.43'



## LEGEND AND ABBREVIATIONS

PSM	PROFESSIONAL SURVEYOR AND MAPPER	PRM	PERMANENT REFERENCE MONUMENT
LB	LICENSED BUSINESS	PCP	PERMANENT CONTROL POINT
R	RADIUS	POC	POINT OF COMMENCEMENT
L	ARC LENGTH	POB	POINT OF BEGINNING
Δ	DELTA (CENTRAL) ANGLE	PB	PLAT BOOK
CB	CHORD BEARING	PC	POINT OF CURVATURE
CD	CHORD DISTANCE	PT	POINT OF TANGENCY
(R)	RADIAL	O.R.	OFFICIAL RECORDS BOOK
(NR)	NON-RADIAL	PUE	PUBLIC UTILITY EASEMENT
R/W	RIGHT-OF-WAY	DE	DRAINAGE EASEMENT
±	MORE OR LESS	SE	SECTION 34-9-18
I.D.	IDENTIFICATION	FE	MINIMUM REQUIRED FINISHED FLOOR ELEVATION
MAG	CHIRNIK'S BRAND	S.F.	SQUARE FEET
N=231668.49	STATE PLANE COORDINATES	AC	ACRES
E=2636887.77	(NAD83 - FLORIDA NORTH ZONE)	BSL	BUILDING SETBACK LINE (TYPICAL)
		CEE	CLAY ELECTRIC EASEMENT

- PERMANENT REFERENCE MONUMENT (PRM) - 5/8" IR/C "PRM LB 2389" (SET)
- PERMANENT REFERENCE MONUMENT (PRM) - 4"x4" CM - SIZE AND IDENTIFICATION AS NOTED (FOUND)
- PERMANENT CONTROL POINT (PCP) - MAG NAIL WITH STEEL WASHER "PCP LB 2389" (TO BE SET)
- PERMANENT REFERENCE MONUMENT (PRM) - IRON PIPE - SIZE AND IDENTIFICATION AS NOTED (FOUND)

BUILDING SETBACK LINE (BSL) REQUIREMENTS (MINIMUM) UNLESS OTHERWISE NOTED	
FRONT	20 FEET
SIDE (INTERIOR)	0 FEET
SIDE (STREET)	0 FEET
REAR	5 FEET
APPLIES TO BOTH PRIMARY AND ACCESSORY STRUCTURES	



eda engineers-surveyors-planners, inc.  
2104 N.W. 43rd St., Gainesville, Florida 32606-6602  
TEL: (352) 373-3541 FAX: (352) 373-7249  
E-MAIL: mail@edafla.com