

## RESOLUTION 20 •

**A RESOLUTION BY THE BOARD OF COUNTY COMMISSIONERS OF ALACHUA COUNTY, FLORIDA, ACCEPTING THE DONATION OF REAL PROPERTY; AUTHORIZING THE EXECUTION OF DOCUMENTS TO EFFECTUATE THE CONVEYANCE; DESIGNATING THE PROPERTY AS A PRESERVE UNDER THE ALACHUA COUNTY FOREVER PROGRAM; AND PROVIDING AN EFFECTIVE DATE.**

**WHEREAS**, Section 125.01, Florida Statutes, grants to counties the power to provide parks, preserves, playgrounds, recreation areas, libraries, museums, historical commissions, and other recreation and cultural facilities and programs; and

**WHEREAS**, Said Statute authorizes the purchase or lease and sell or exchange of real property as necessary or incident to carrying out such powers enumerated; and

**WHEREAS**, Pierre R. Warny, Jr. and Nancy H. Warny, husband and wife, nominated their property as shown in Exhibit “A”, attached hereto and by reference incorporated herein (the Property), to the Alachua County Forever Program as a conservation easement on April 26, 2001, and the County Commissioners place the property on the Active Acquisition List on June 11, 2002; and

**WHEREAS**, Mr. Warny contacted Alachua County on August 18, 2020 stating they are willing to donate the Property for the purpose of its use as an Alachua County Forever Preserve; and

**WHEREAS**, the Warny’s wish to donation the property in memory of their late son, Peter Henry Warny (1989 – 2013); and

**WHEREAS**, the donation has been reviewed pursuant to the Alachua County Donation Policy and received a positive recommendation from the Donation Acceptance Committee.

**NOW THEREFORE, BE IT RESOLVED BY THE BOARD OF COUNTY COMMISSIONERS OF ALACHUA COUNTY, FLORIDA;**

1. The Board finds, determines, and declares that the recitals in the preamble are true and correct, and hereby incorporates them by reference.
2. The Board approves the Budget Amendment attached hereto as Exhibit "B".
3. The County Manager is authorized to effect the expenditure of funds for due diligence and associated closing costs as may be necessary to examine the title and physical condition of the Property.
4. That the Board authorizes the acceptance of a deed of gift to the Property at the discretion of the County Manager after review of the due diligence reports.
5. That the Chair is authorized to execute any documents, approved by the County Attorney, needed to complete this conveyance.
6. Upon transfer of title of the Property to Alachua County, the Property shall be designated as a "Preserve" under the Alachua County Forever program for the protection and management of water resources, wildlife habitats and as a natural area for resource-based recreation.
7. This resolution shall take effect immediately upon its adoption.

**DULY ADOPTED** in regular session, this \_\_\_\_\_ day of \_\_\_\_\_, 2020

**BOARD OF COUNTY COMMISSIONERS OF ALACHUA COUNTY, FLORIDA**

ATTEST:

\_\_\_\_\_  
J.K. "Jess" Irby, Esq.  
Clerk of Court

(SEAL)

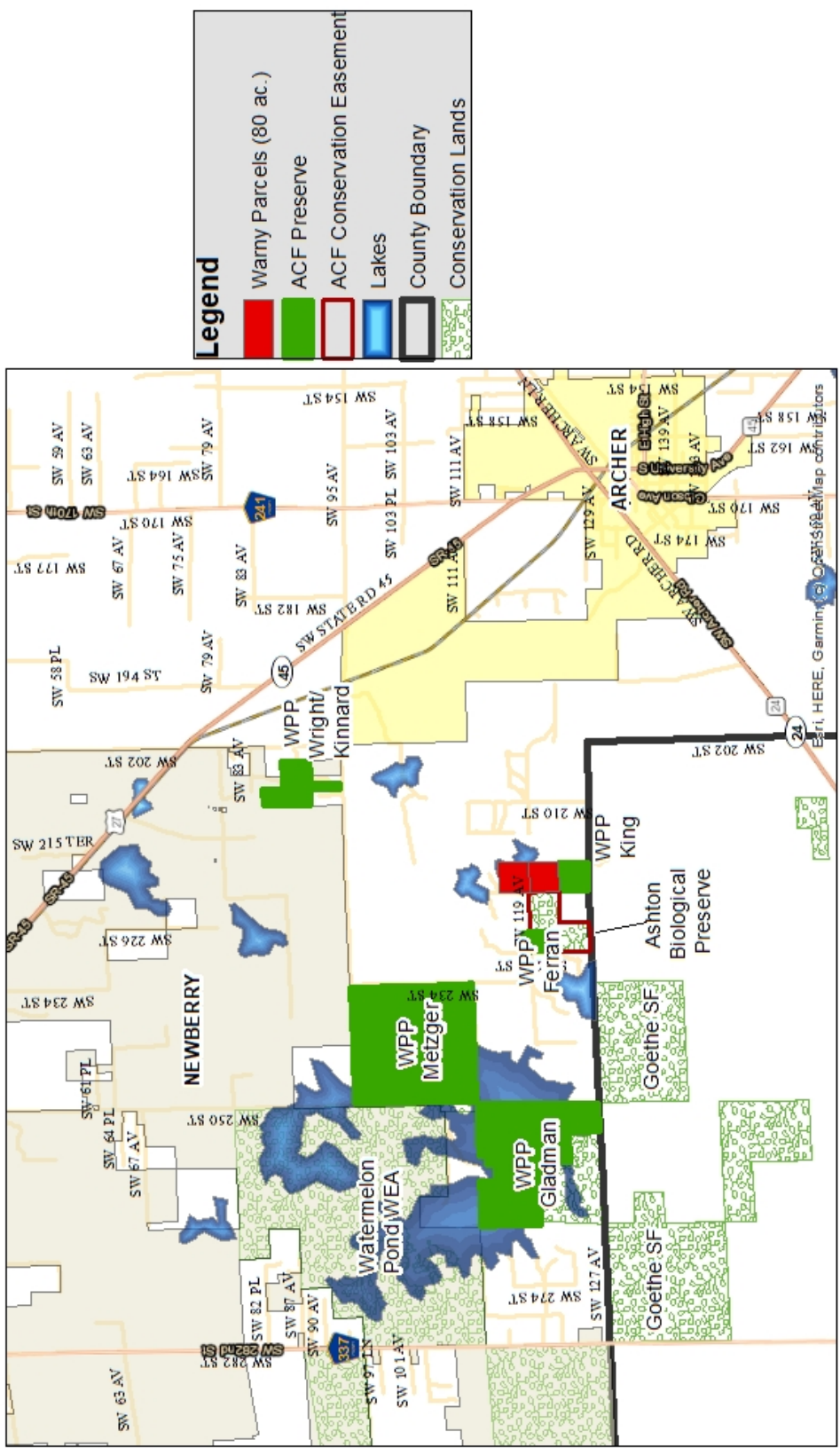
By: \_\_\_\_\_  
Chair

APPROVED AS TO FORM

\_\_\_\_\_  
Alachua County Attorney

**Exhibit "A"**

# Watermelon Pond - Warny Location Map



**Legend**

- Warny Parcels (80 ac.)
- ACF Preserve
- ACF Conservation Easement
- Lakes
- County Boundary
- Conservation Lands

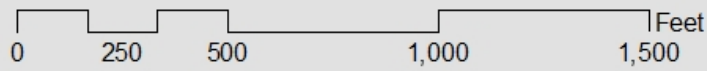
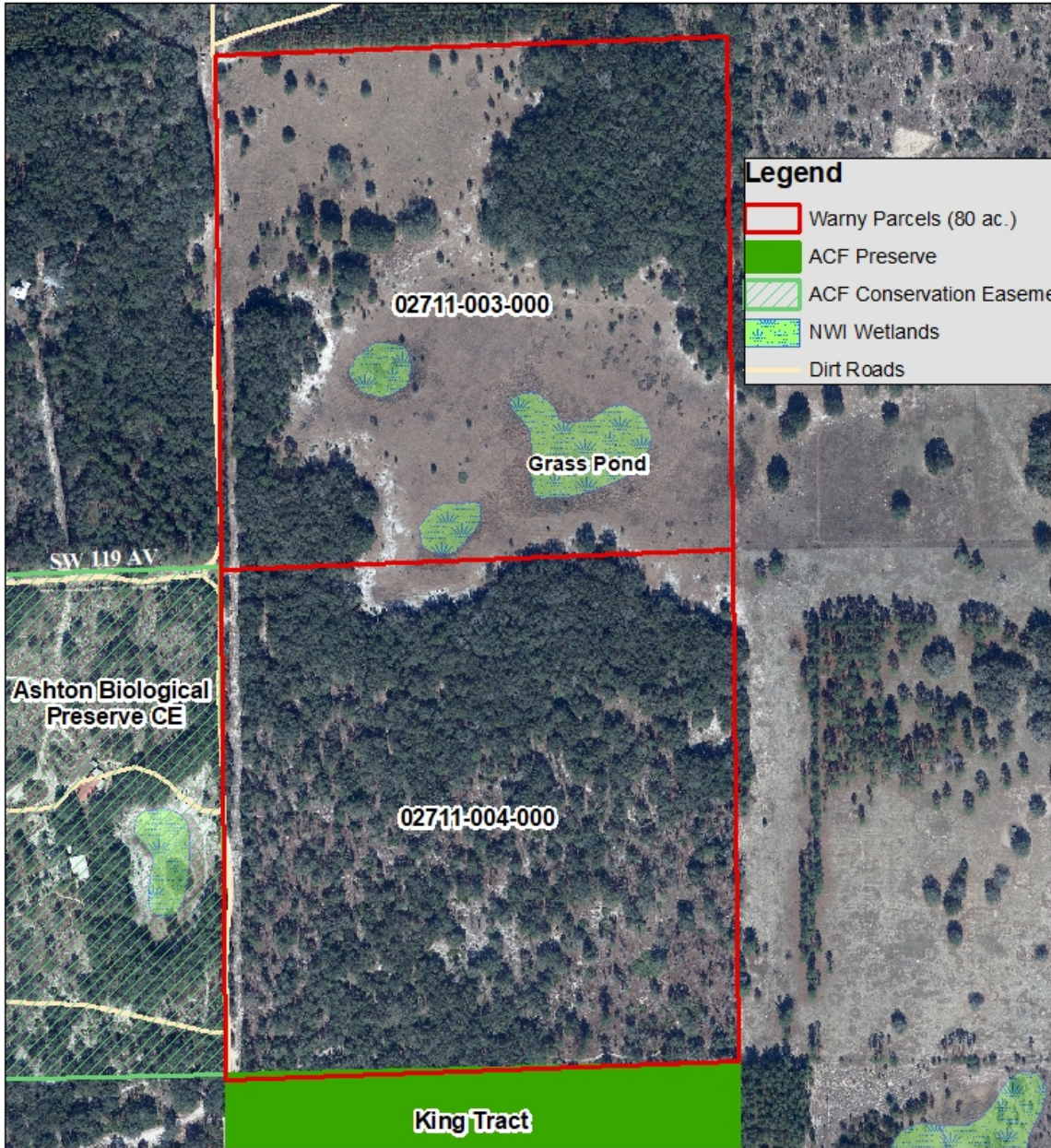
0 0.5 1 2 3 4 Miles

N

DISCLAIMER: This map and the spatial data it contains are made available as a public service, to be used for reference purposes only. The Alabama County Environmental Protection Department provides this information AS IS without warranty of any kind. The quality of the data is dependent on the various sources from which each data layer is obtained.



# Watermelon Pond - Warny Parcel Map



DISCLAIMER: This map and the spatial data it contains are made available as a public service, to be used for reference purposes only. The Alachua County Environmental Protection Department provides this information AS IS without warranty of any kind. The quality of the data is dependent on the various sources from which each data layer is obtained.

Department	Number	Journal Type	Sub Ledger	G/L Date	Description	Source	Reference	Reclassification	Journal Type
5500 - Environmental Protection	2021-00000686	BA	GL	11/25/2020	BCC- Donation of Warny Property - WSPP Land Conserv				
<i>G/L Date</i>	<i>G/L Account Number</i>	<i>Account Description</i>		<i>Description</i>	<i>Source</i>	<i>Increase Amount</i>	<i>Decrease Amount</i>		
11/25/2020	021.41.4160.537.61.00	Land	Land	BCC- Donation of Warny Property - WSPP Land Conserv		.00	10,300.00		
11/25/2020	021.41.4160.537.61.00	Land	Land	BCC- Donation of Warny Property - WSPP Land Conserv		10,300.00	.00		
Project: 6194101-Watermelon Pond-Warny - WSPP - Land Acquisition, Watermelon Pond, Warny Parcel - Donation									
						Number of Entries: 2	\$10,300.00	\$10,300.00	