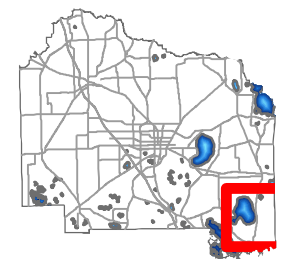
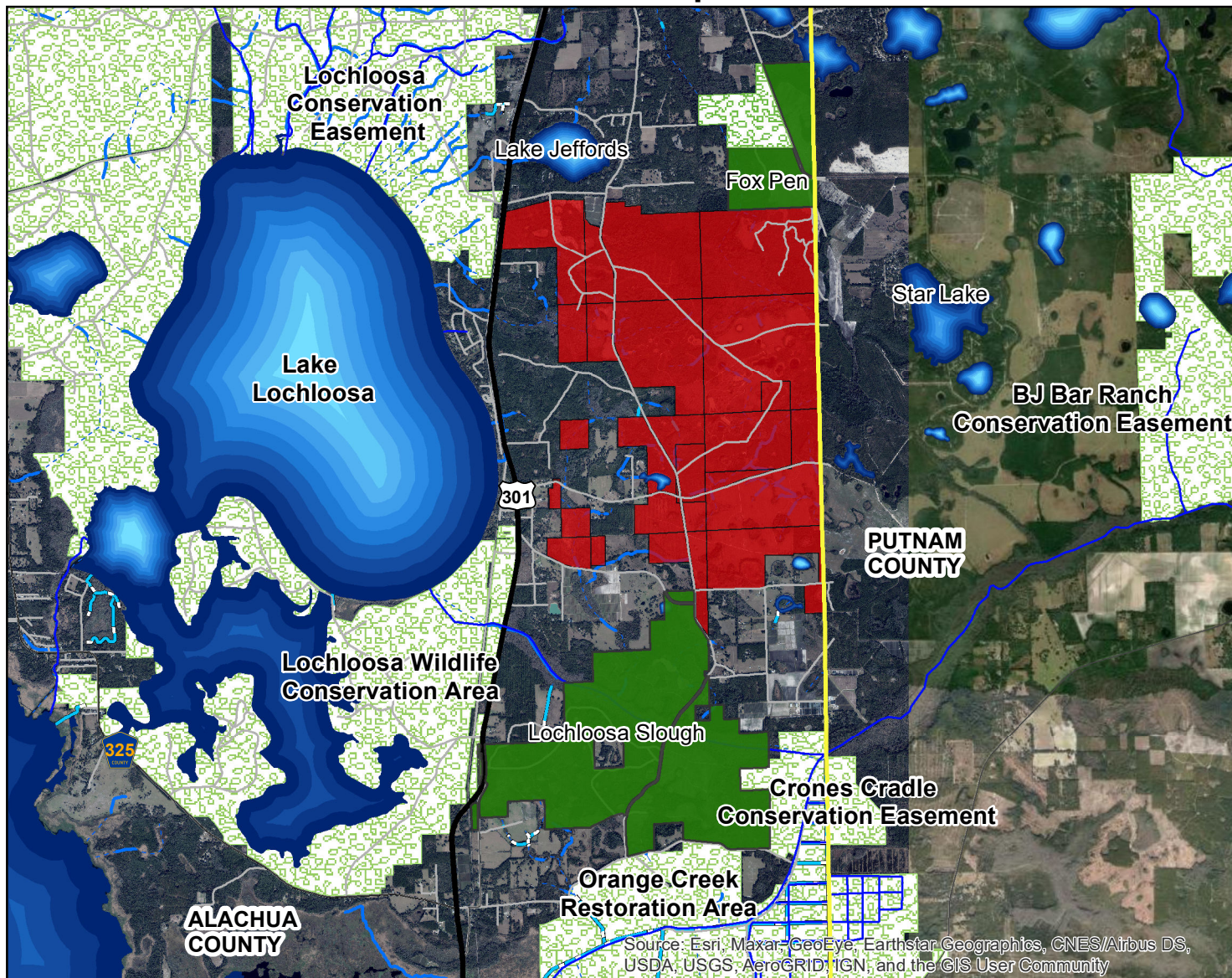
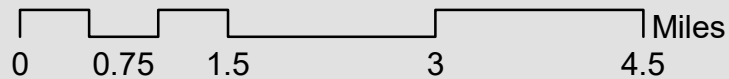


# Lochloosa Slough Flatwoods - Fox Pen Connector Location Map

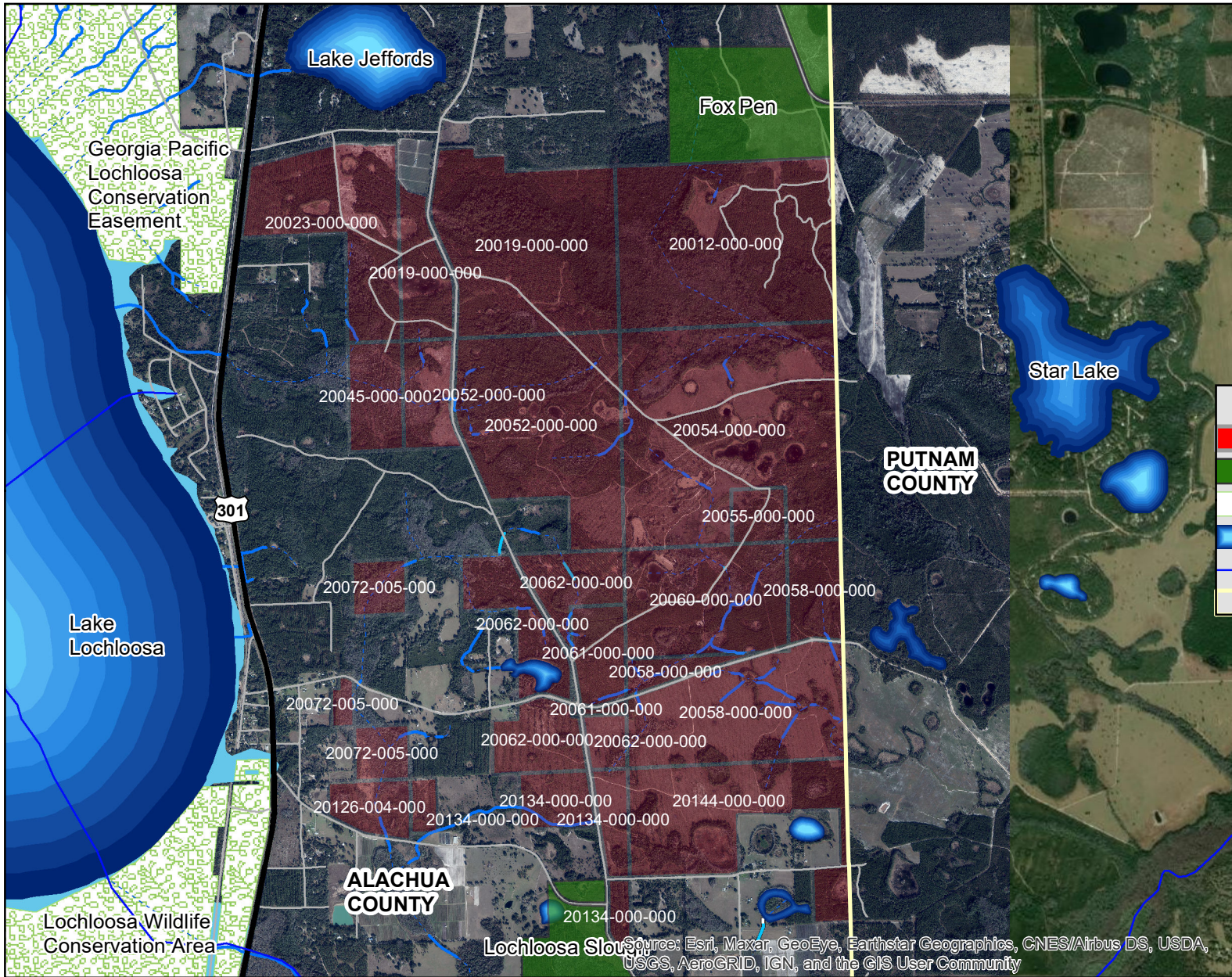


Source: Esri, Maxar, GeoEye, Earthstar, Geographics, CNES/Airbus DS, USDA, USGS, AeroGRID, IGN, and the GIS User Community



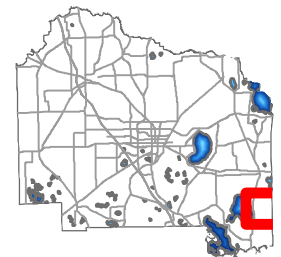
**DISCLAIMER:** This map and the spatial data it contains are made available as a public service, to be used for reference purposes only. The Alachua County Environmental Protection Department provides this information AS IS without warranty of any kind. The quality of the data is dependent on the various sources from which each data layer is obtained.

# Lochloosa Slough Flatwoods - Fox Pen Connector - Parcel Map



**Legend**

- Fox Pen Connector (3,995.67 ac.)
- ACF Preserves
- Conservation Lands
- Lakes
- Drainage
- County Boundary



**DISCLAIMER:** This map and the spatial data it contains are made available as a public service, to be used for reference purposes only. The Alachua County Environmental Protection Department provides this information AS IS without warranty of any kind. The quality of the data is dependent on the various sources from which each data layer is obtained.