

# Alachua County Forever

## Land Acquisition Planning

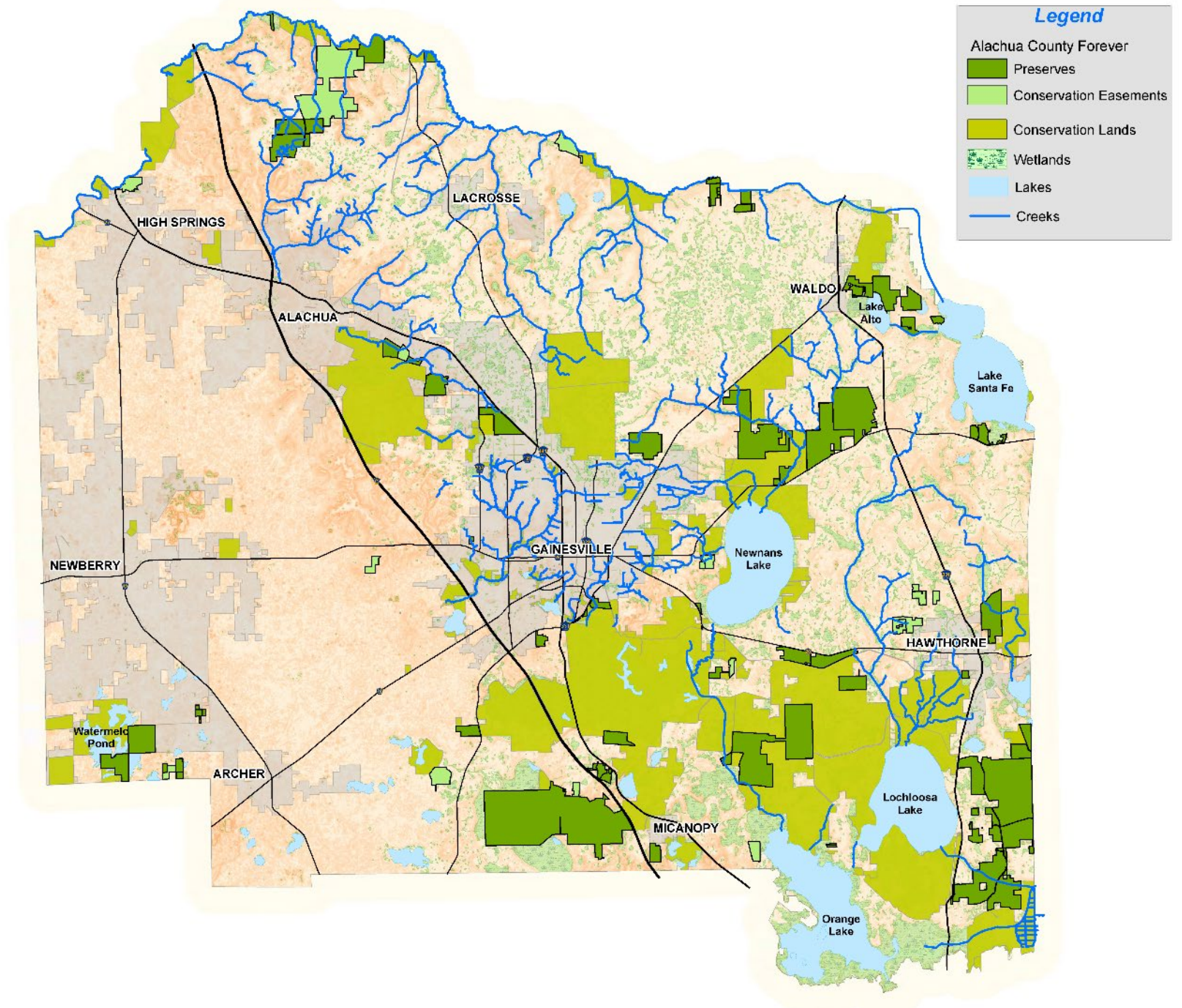


**Charlie Houser, Director**  
**Office of Land Conservation and Management**



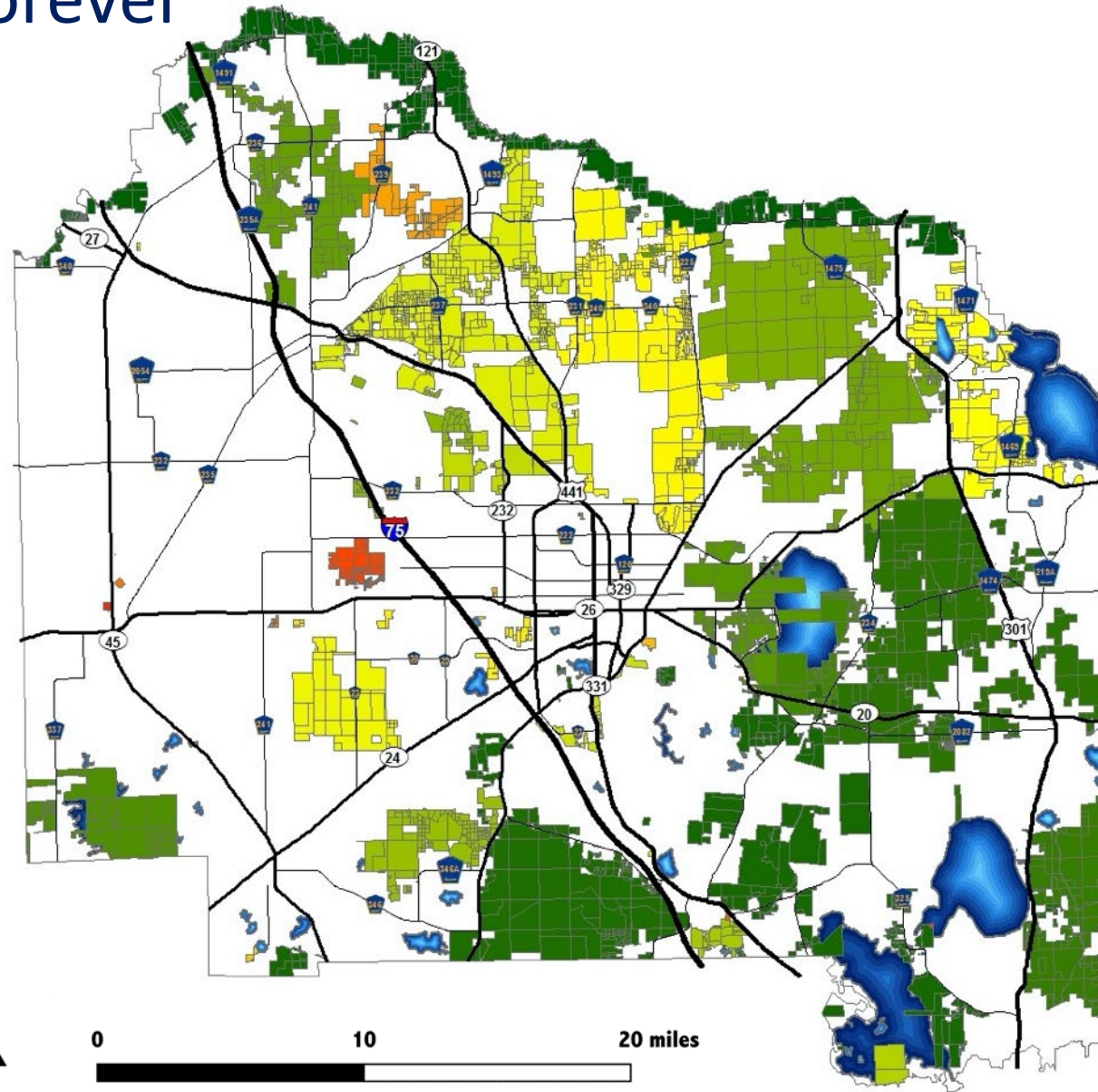
# Existing Conservation Lands

January 2022





# Alachua County Forever Projects

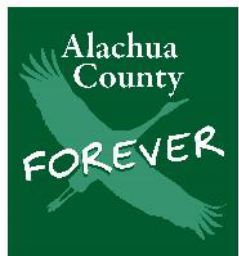


## Legend

### ACF Projects

#### REPA, projname

- 8.96, Santa Fe River
- 8.18, Lochloosa Forest-Levy Prairie Connector
- 7.96, Barr Hammock-Levy Prairie
- 7.87, Lochloosa Creek Flatwoods
- 7.73, Lochloosa Slough Flatwoods
- 7.51, East Newnans Lake
- 7.47, Watermelon Pond
- 7.42, Lake Forest Creek
- 7.4, Mill Creek
- 7.36, Austin Cary Flatwoods
- 7.29, Northeast Flatwoods
- 7.29, San Felasco Additions
- 7.18, Kanapaha Prairie
- 7.13, Lake Tusawilla
- 7.04, McCormick Island
- 6.98, Millhopper Flatwoods
- 6.98, Paynes Prairie Additions
- 6.93, Burnette Lake
- 6.93, Hickory Sink
- 6.87, Lake Santa Fe
- 6.58, Buck Bay Flatwoods
- 6.29, Gainesville Archipelago
- 6.22, Southeastern Bat Maternity Caves
- 6.07, High Springs Park
- 5.93, Lizzie Robinson
- 5.8, Renaissance Park
- 5.62, Sugarfoot Sink
- 5.38, Beville Creek
- 5.22, Hasan Flatwoods
- 5.02, T.L. Weeks-Oakey Woods Tract
- 4.93, Hartman-Mackey Tracts
- 4.29, Morningstar Ranch
- 3.5, City of Newberry Wellhead
- 3.49, N.E. Park Additions
- <Null>, Micanopy Native American Heritage Preserve
- <Null>, Serenola Forest
- <Null>, Fletcher's Pine Hill Forest
- <Null>, Matheny Tract
- <Null>, Shotgun Hole
- CountyBoundary
- Lakes



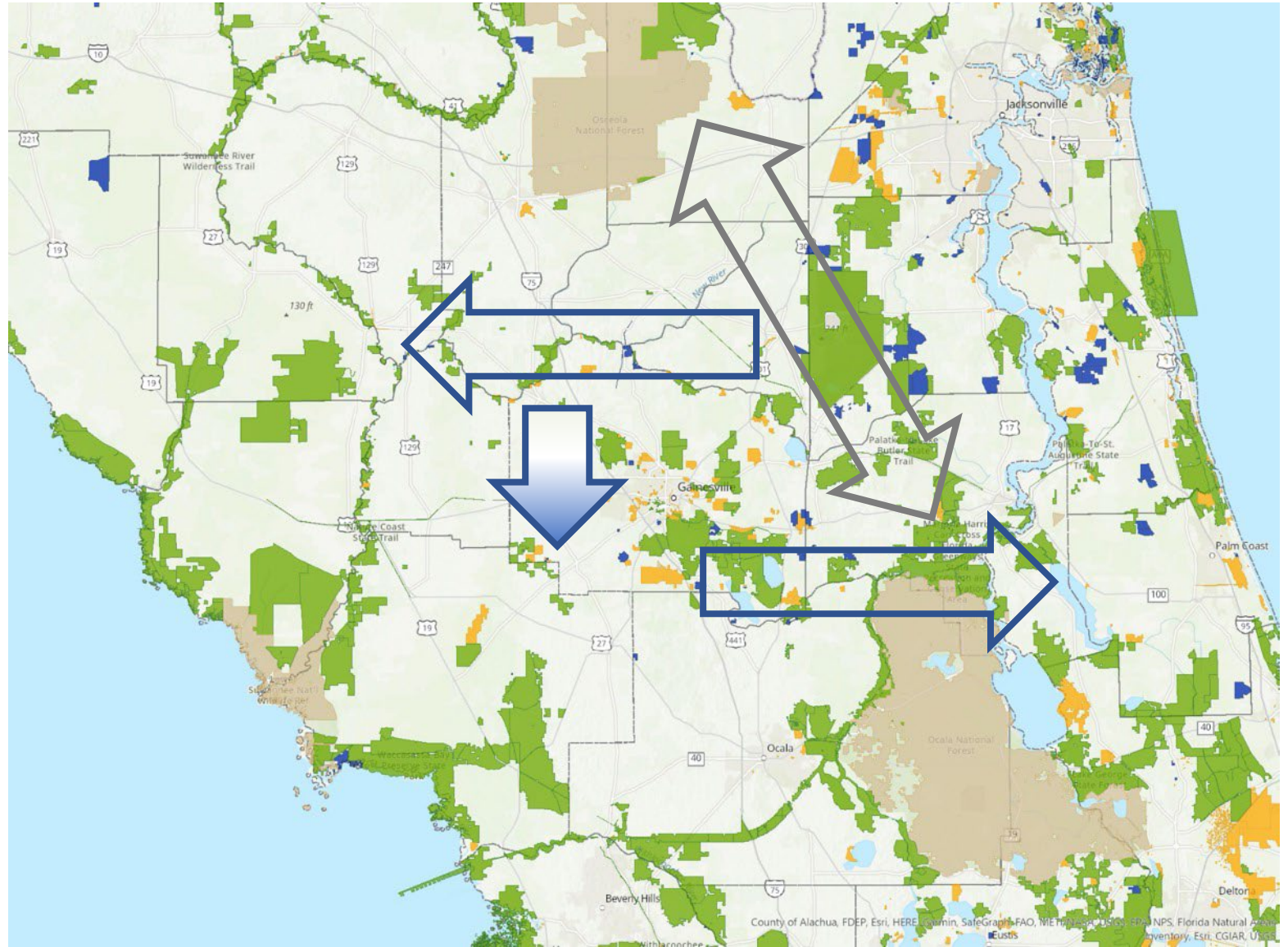
0 10 20 miles

# Regional Conservation Priorities

- Santa Fe/Suwannee
- Ocklawaha/St. Johns
- Springs/Aquifer
- O to O Corridor

## Universal Drivers

- Biodiversity
- Climate Change

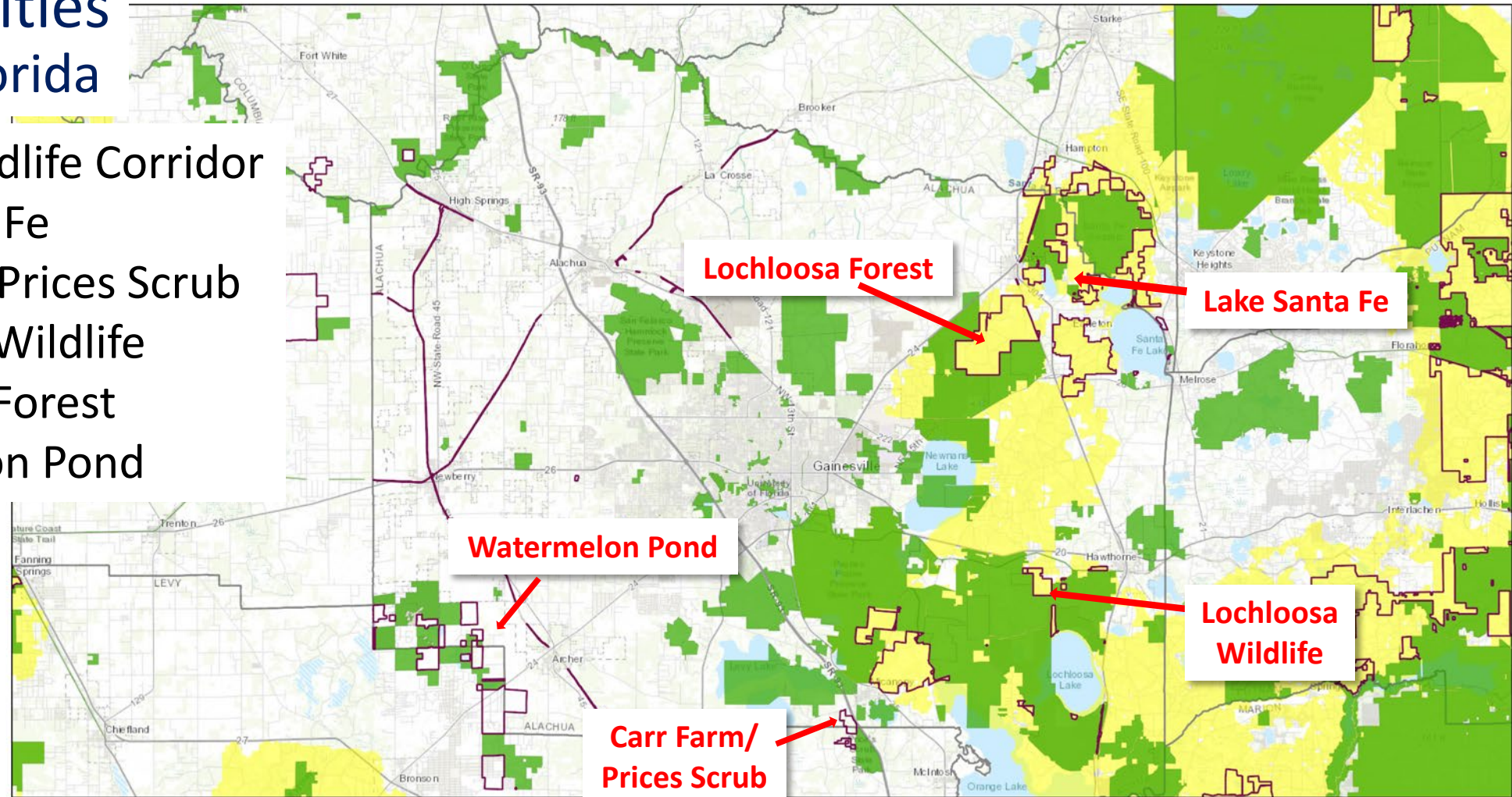




# Opportunities State of Florida

- Florida Wildlife Corridor
- Lake Santa Fe
- Carr Farm/Prices Scrub
- Lochloosa Wildlife
- Lochloosa Forest
- Watermelon Pond

## Florida Wildlife Corridor



1/18/2022, 3:36:46 PM

Florida Counties

FFBOT Projects - Unacquired Portions (Florida Forever Projects)

Florida Conservation Lands

FL Wildlife Corridor 2021 (FEGN Priorities 1-3) (FEGN=Florida Ecological Greenways Network)

1:316,670  
0 3.5 7 14 mi  
0 5 10 20 km

Esri, HERE, Garmin, USGS, NGA, EPA, USDA, NPS



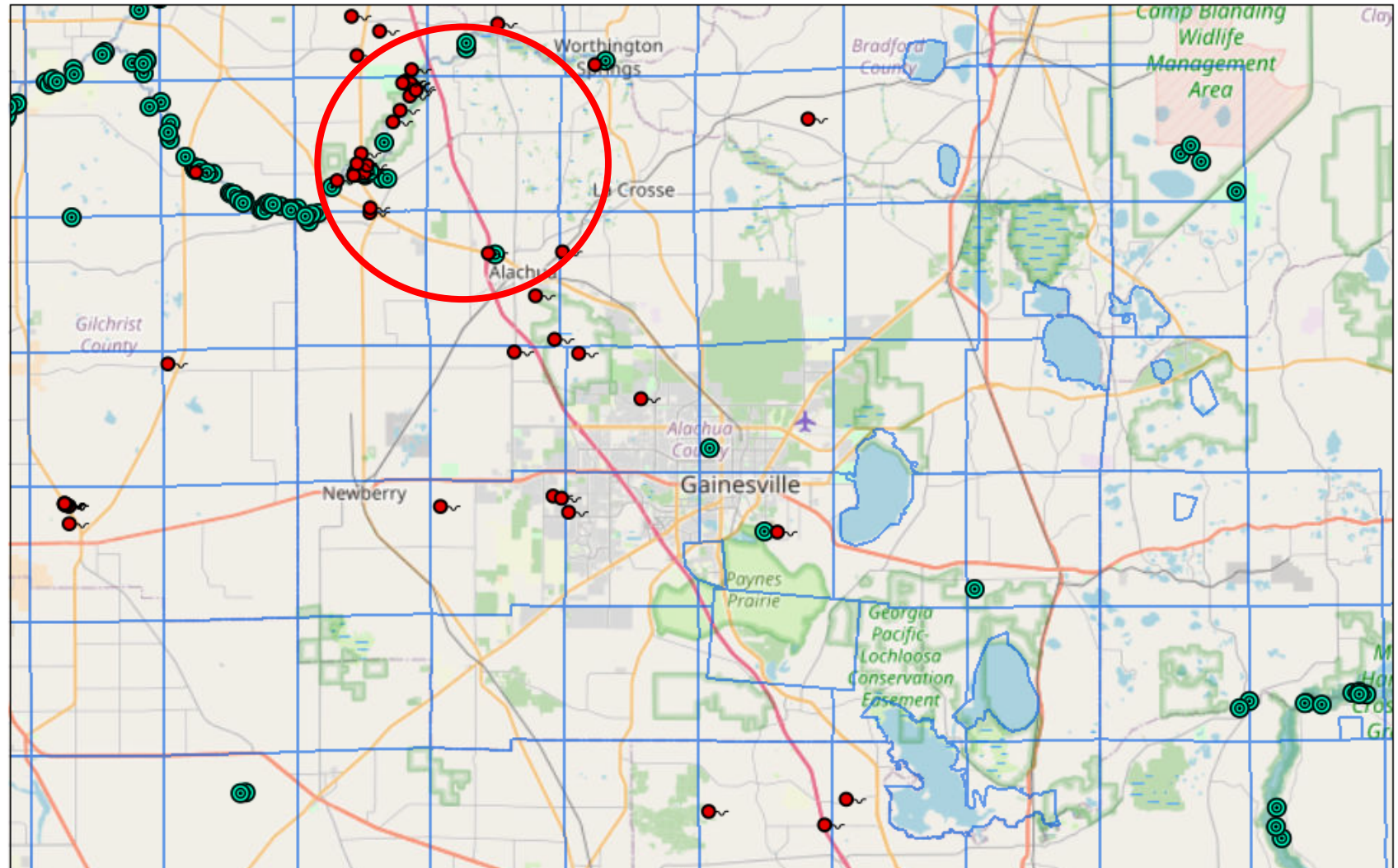


# Opportunities Springs Protection

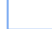

- Mill Creek Sink – Rembert CE
- High Springs Lime Rock
- ACT Projects




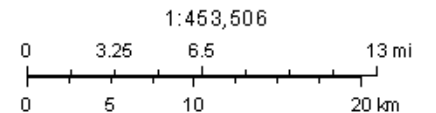
Florida Springs Protection Areas Map



January 18, 2022

 FGS Springs Protection Areas  FGS Swallets

 Florida Springs (2016) (FGS=Florida Geological Survey)

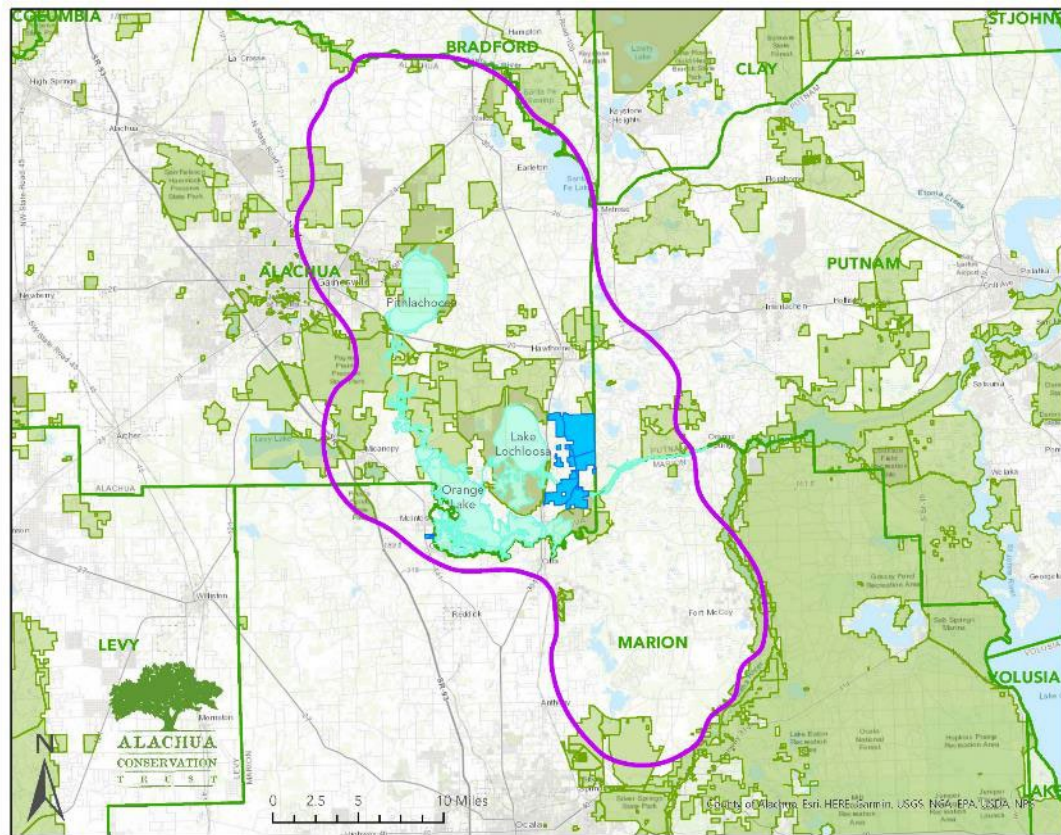


© OpenStreetMap (and) contributors, CC-BY-SA, FDEP, DEAR, FGS

Map created by Map Direct, powered by ESRI.

Florida Department of Environmental Protection makes no warranty, expressed or implied or assumes any legal liability or responsibility for the accuracy, completeness or usefulness of any information, apparatus, product or process disclosed or represents its use.





## NAWCA Project: North Florida Wetlands Conservation Connector Project

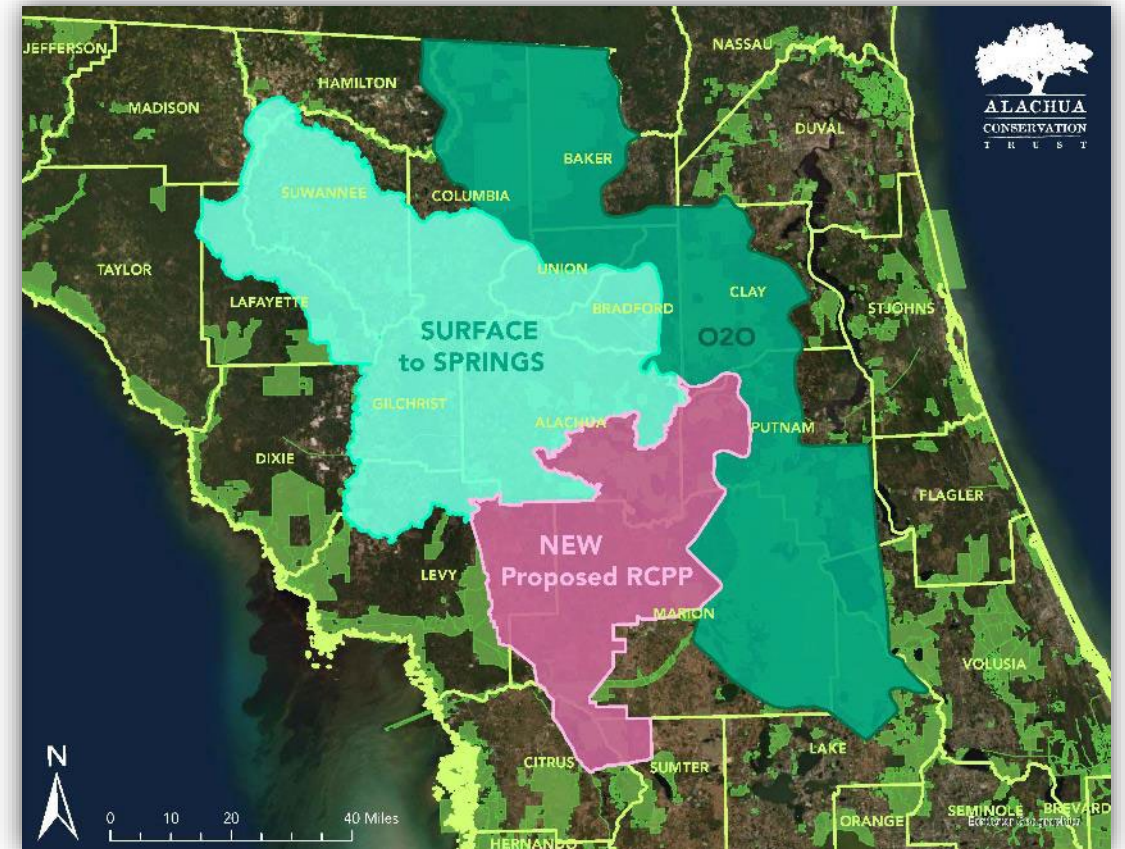
- NAWCA Major Lakes and Waterways
- County Boundaries
- Conservation Lands
- NFWCCP Project Area
- NFWCCP Parcels

## RCPP Projects in North Central Florida

- NEW Proposed RCPP
- Surface to Springs- Alachua Conservation Trust
- O2O (Ocala to Osceola) - North Florida Land Trust
- Florida Counties
- Conservation Lands

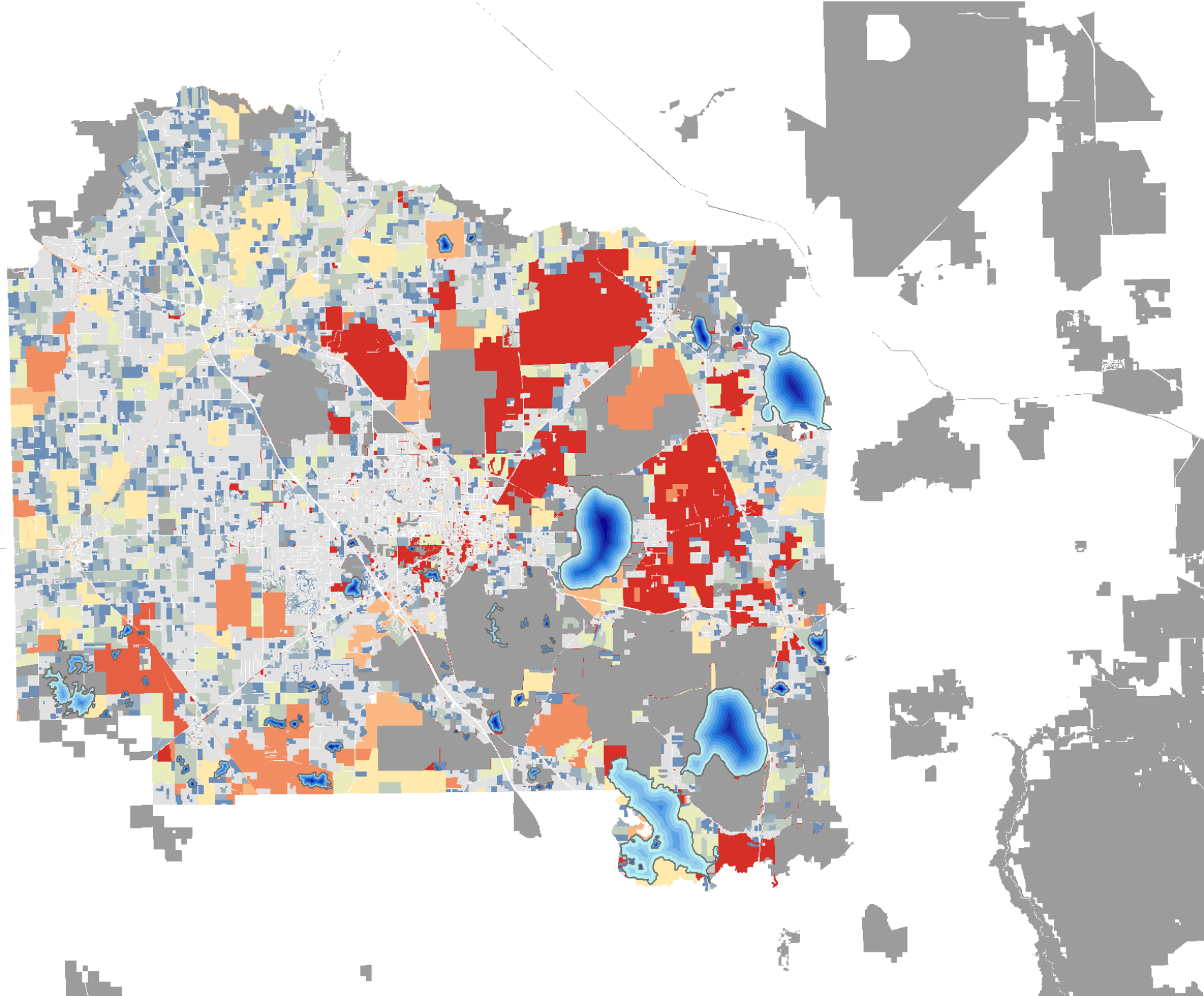
## Opportunities ACT Sponsored Federal Projects

- North American Wetlands Conservation Act
- Regional Conservation Partnership Projects



# Feasibility

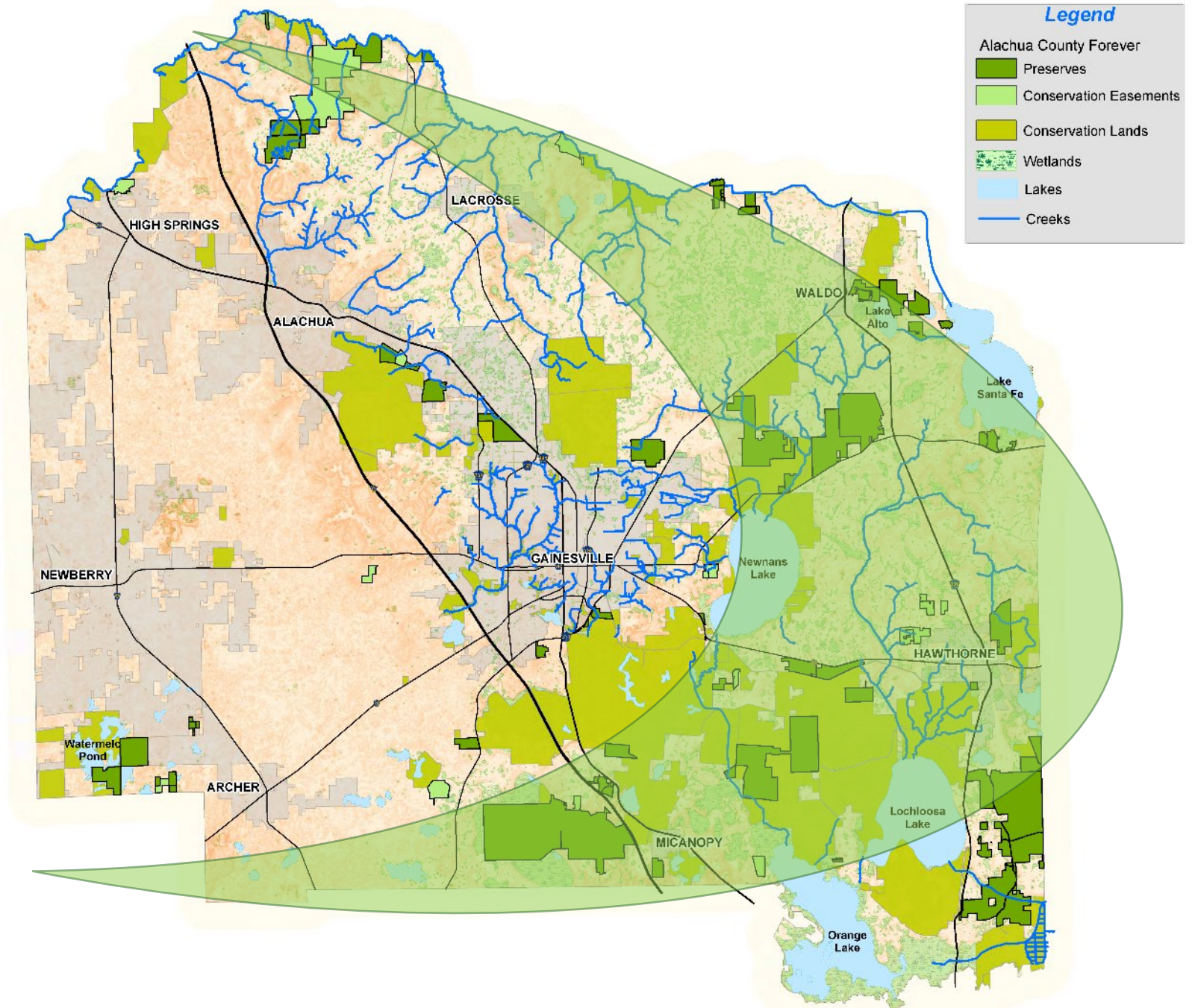
Ownerships > 40 acres





# The Green Crescent

- Hornsby Springshed
- Santa Fe River
- Lakes Santa Fe and Alto
- Austin Cary Flatwoods
- Lochloosa Creek
- Lochloosa Slough
- Barr Hammock
- Watermelon Pond



# Conclusions

- Alachua County Forever has been successful in addressing both local and state-level conservation priorities.
- There are opportunities to leverage County resources to complete key projects.
- Alachua County Forever should maintain its current focus, but can be used as a model for programs to address other resource protection needs.
- The Green Crescent represents a feasible strategy for the continuation of the Alachua County Forever Program.