



Alachua County Right Of Way Wildflower Program

July 9, 2019

Ramon D. Gavarrete, P.E.
Public Works Director



Alachua County Right of Way Wildflower Program

What is a wildflower?

- A wildflower, according the Florida Wildflower Foundation, is “any flowering herbaceous species, or woody species with ornamental flowers, which grew wild with the state’s natural ecosystems in the 1560’s when Florida’s first botanical records were created.”



Alachua County Right of Way Wildflower Program

Why have a wildflower program?

- Wildflowers are an important element of healthy ecosystems and at a minimum provide the following benefits:
 - Habitat
 - Food
 - Moderate climate
 - Improve air and water quality
 - Aesthetically pleasing
- Decreased mowing costs
- Public appreciation and interest

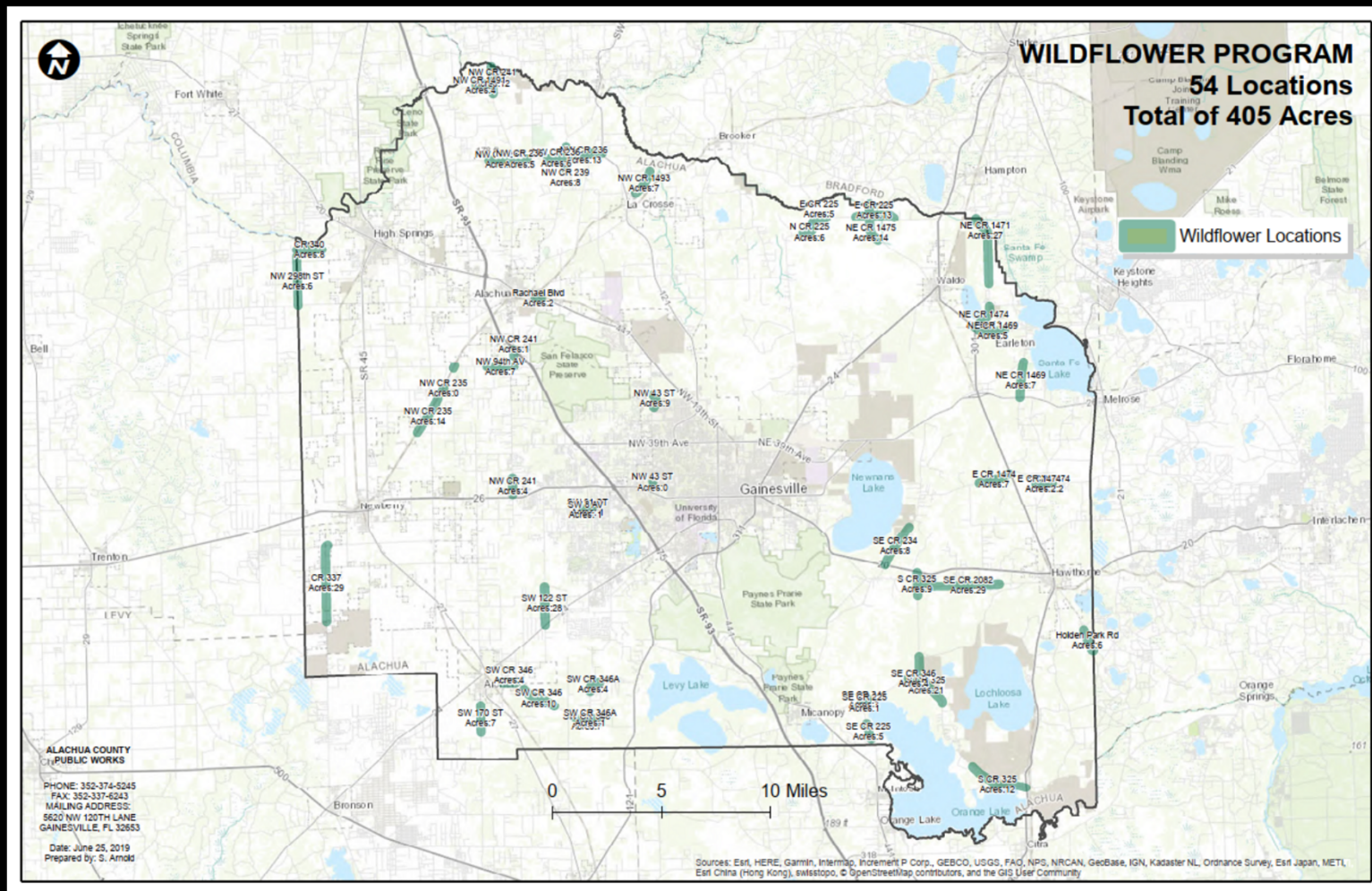


Designated Wildflower Areas

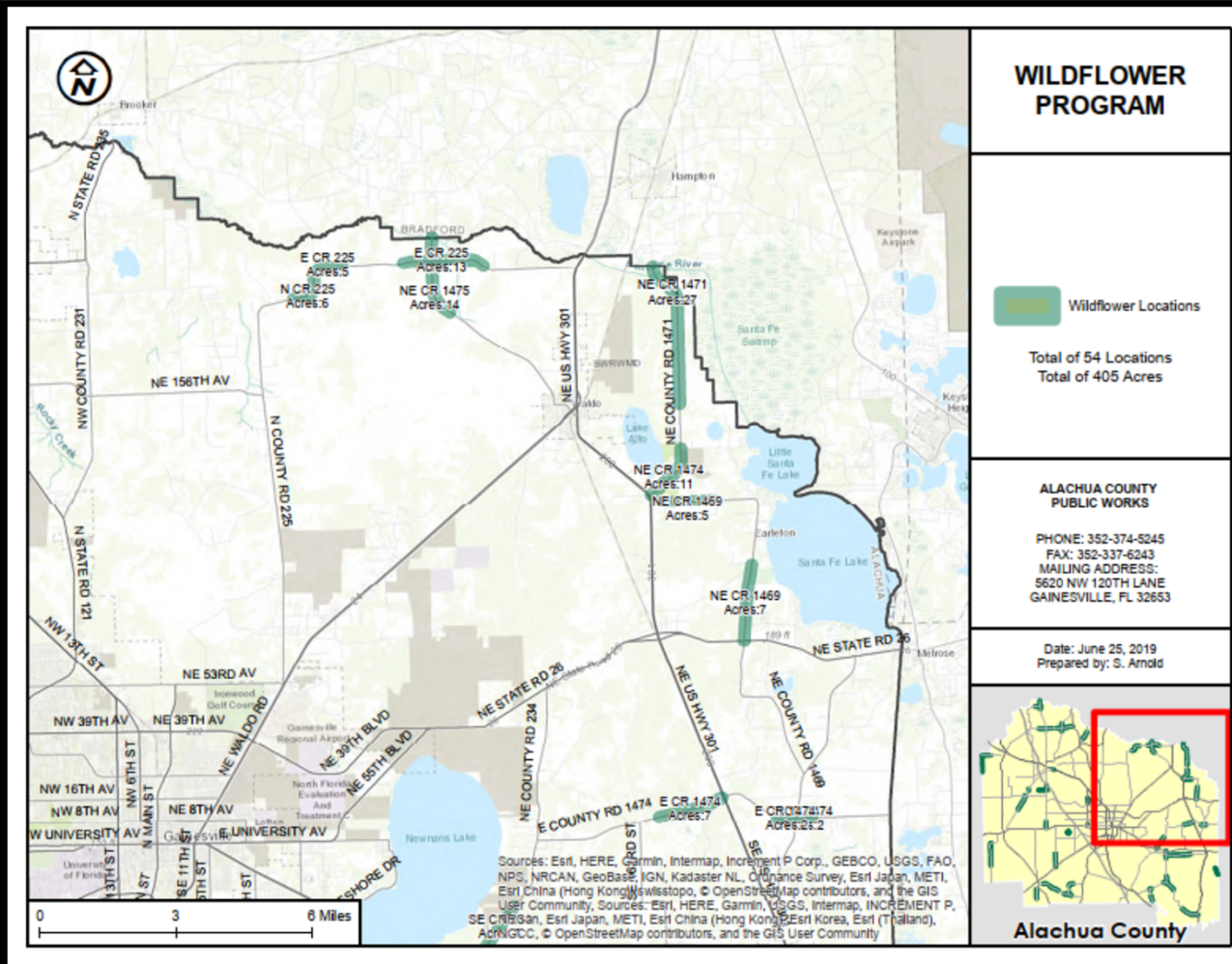
- **Public Works staff have mapped out 54 designated wildflower locations with County Maintained Rights of Way**
 - \cong 405 Total acres
 - 19 Existing, naturally occurring locations will be preserved through improved cultural practices
 - 35 Locations (\cong 287 acres) are proposed for enhancement opportunities
 - Due to cost, Public Works Proposes to seed up to 10 Acres per year



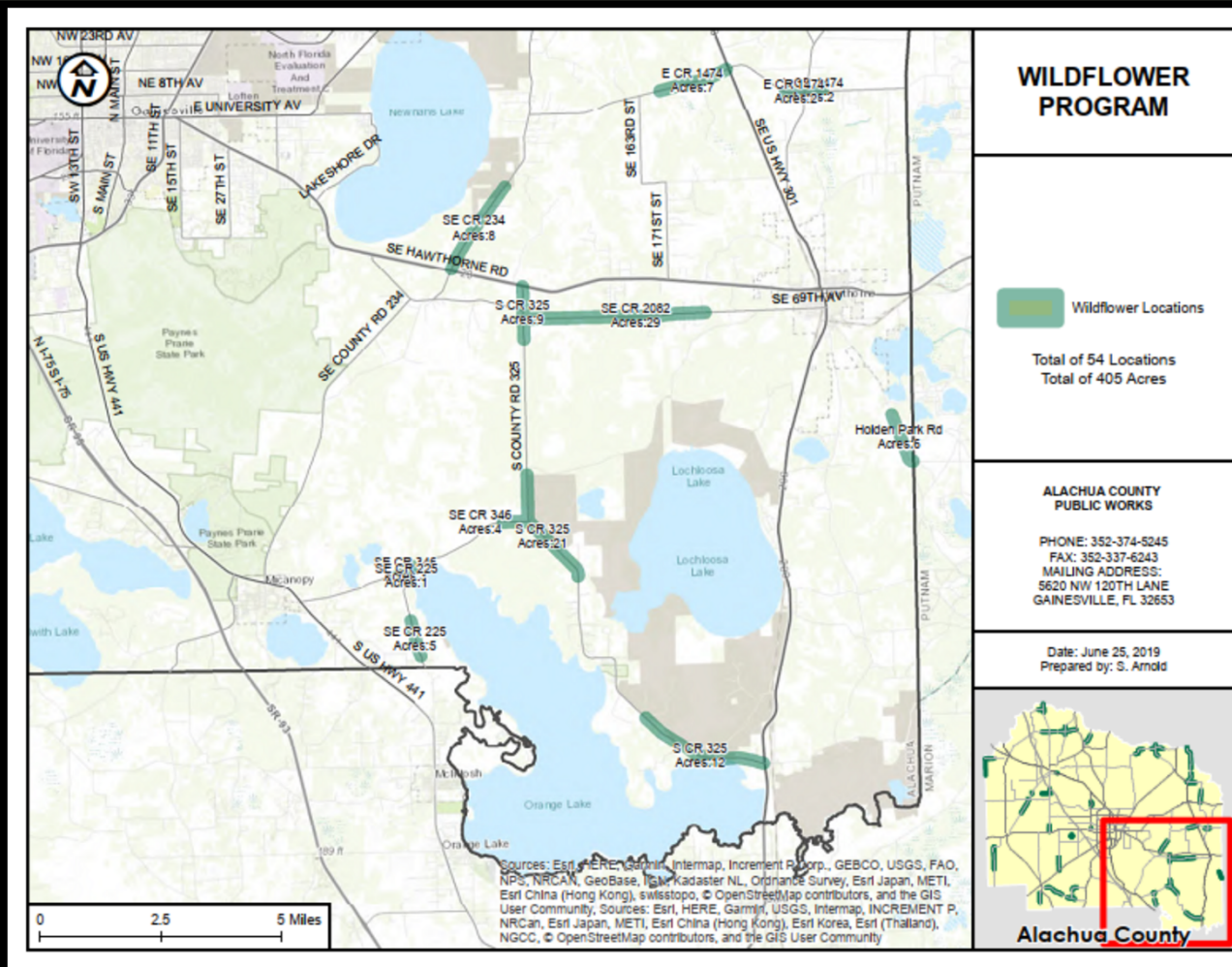
County Wide Map of Wildflower Locations



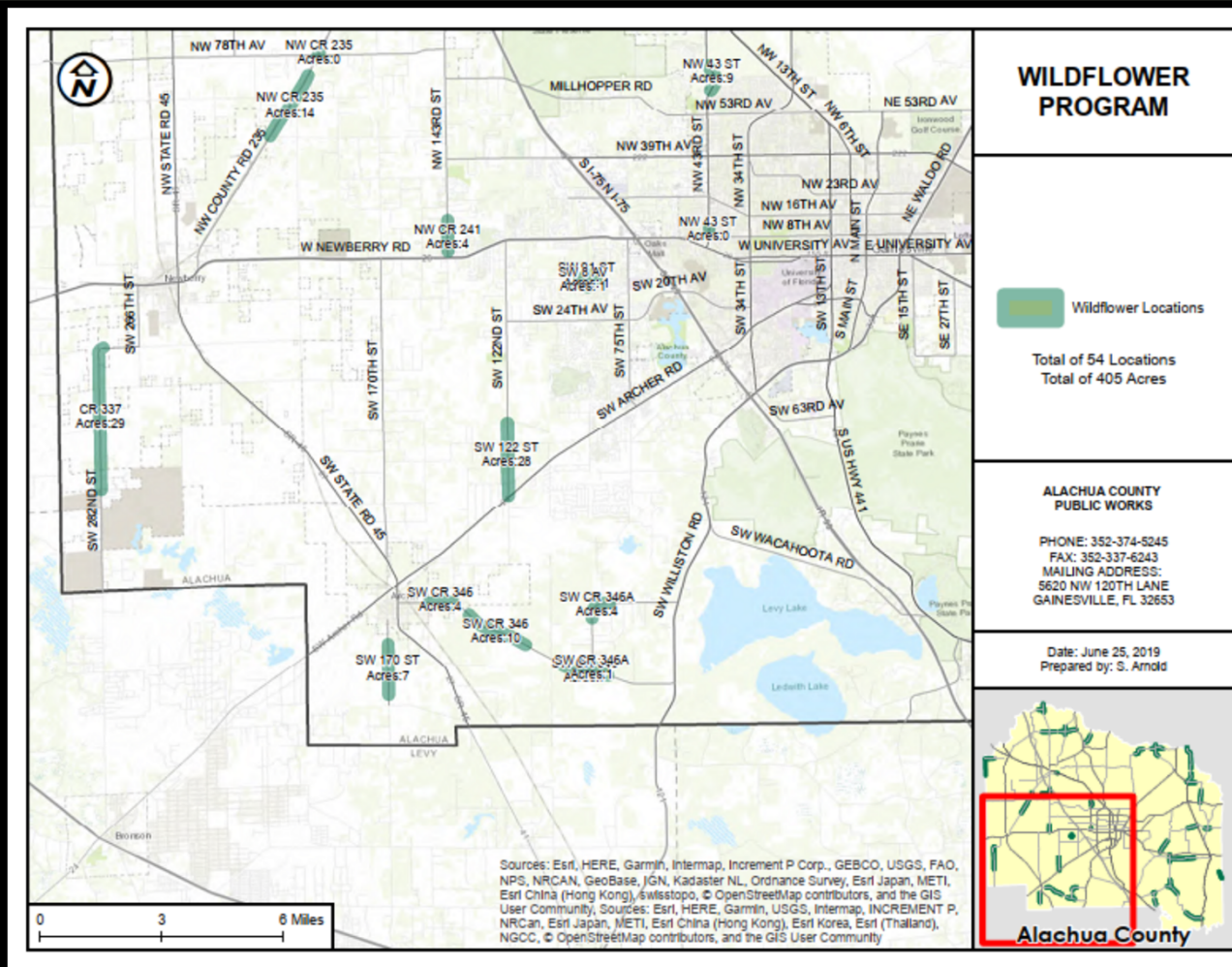
NE Wildflower Locations Map



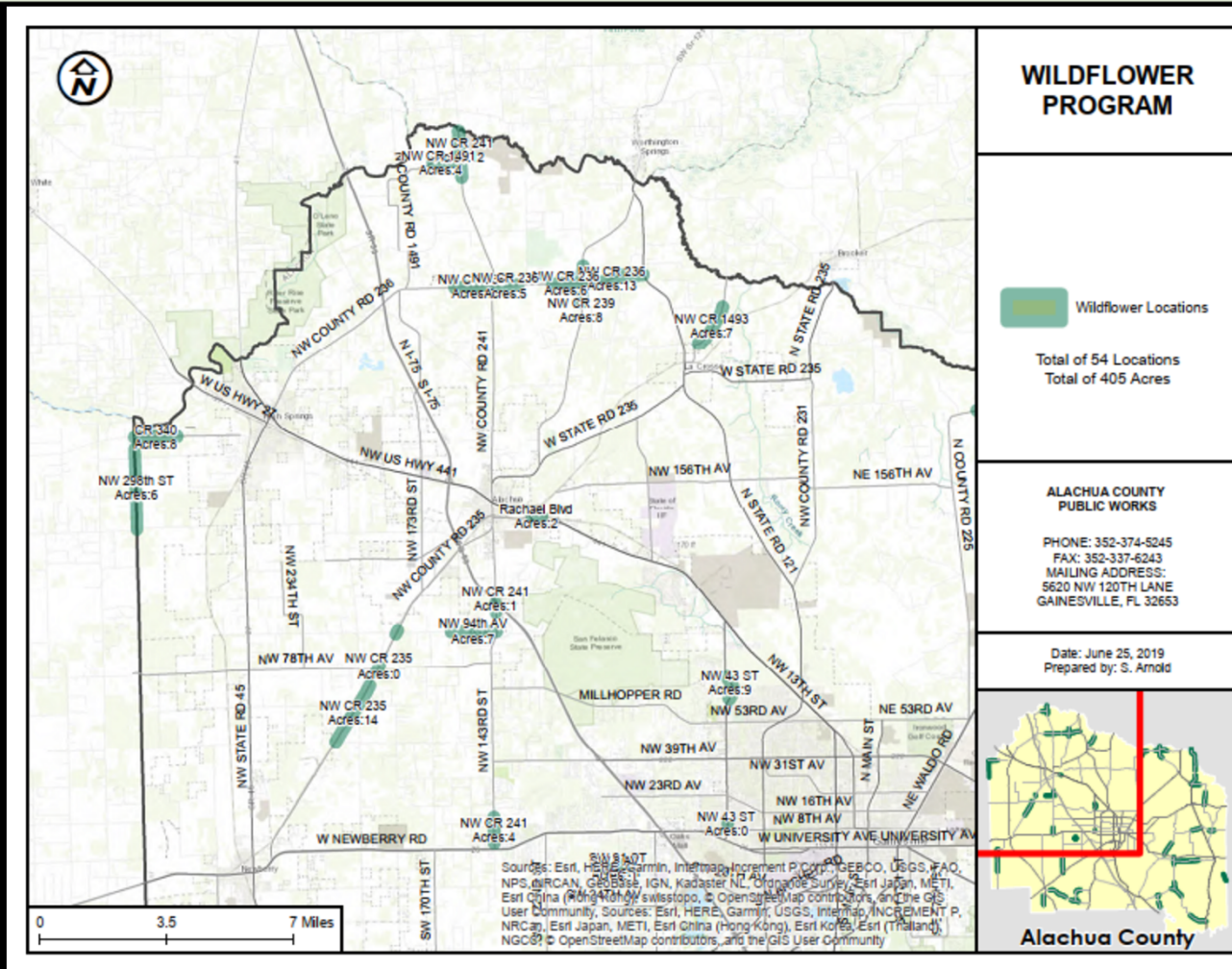
SE Wildflower Locations Map



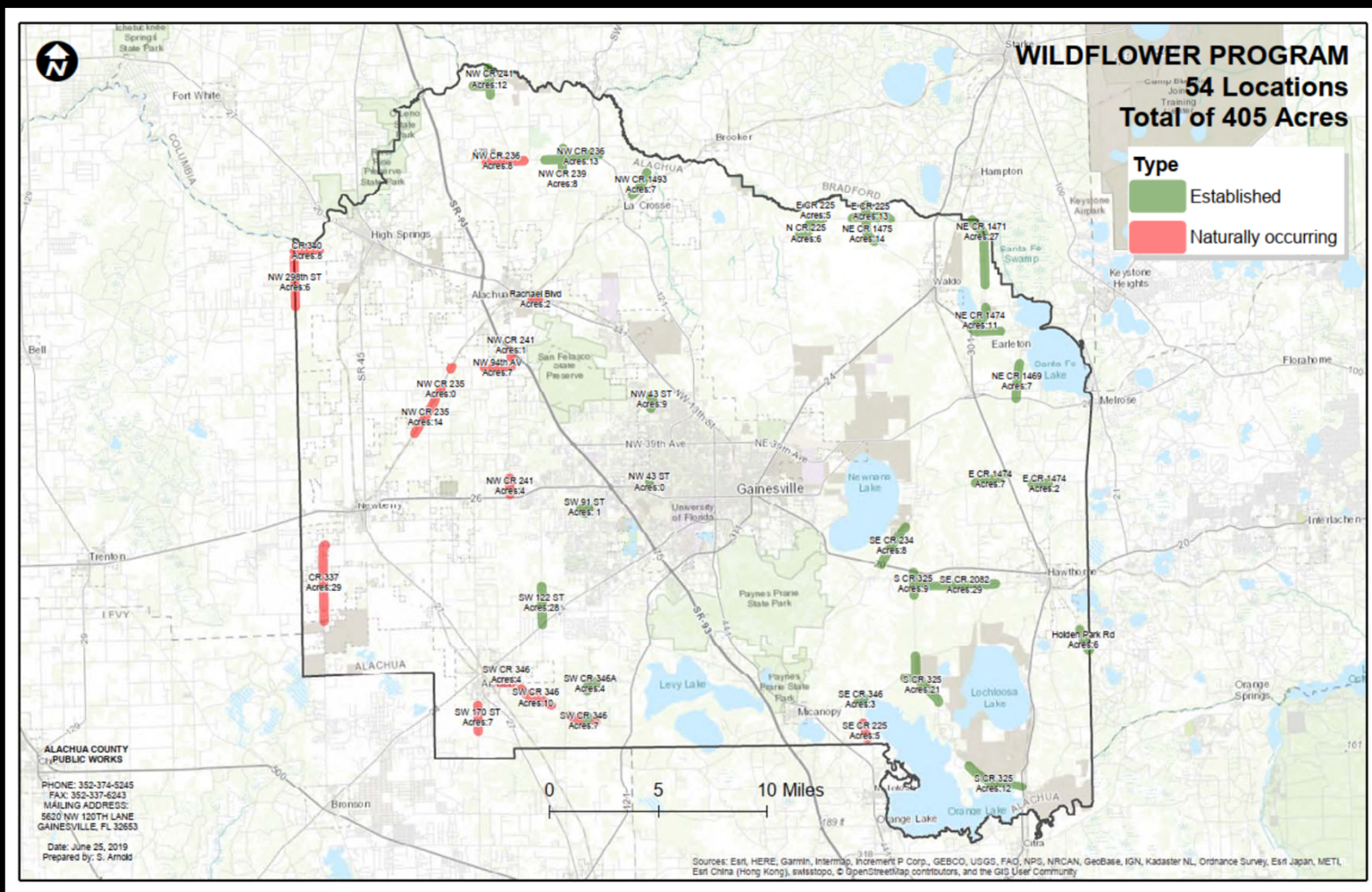
SW Wildflower Locations Map



NW Wildflower Locations Map



Map of Wildflower Locations by Type



Cultural Practices / Procedures

- Alachua County Wildflower Area Signs will be installed to delineate locations
- Scheduled mowing for designated wildflower areas will be suspended from October through June to allow seed germination, vegetative growth, flowering, and seed production/maturation
- 6' shoulder widths shall be maintained as per the Greenbook Design Standards



Cultural Practices / Procedures

- Seeding of designated proposed wildflower areas will take place in the fall, October to early November, following site preparations
- Sites will be prepared for seeding by mowing as low as possible, as well as other mechanical means as needed, including disking, light tilling, or surface scraping



Hydro Seeding Costs

- Contractor cost for hydro seeding
 - \$0.10/ft², includes native wildflower seed mix
 - 1 acre minimum



Hydro Seeding Contractor Provided Species Mix

- Indiangrass, GA Ecotype
- Little Bluestem 'Camper'
- Sensitive Pea, NC Ecotype
- Garber's Blazing Star, FL Ecotype
- Rayless Sunflower, FL Panhandle Ecotype
- Slender Gayfeather, FL Ecotype
- Goldenmane Tickseed (*Coreopsis basalis*), FL Ecotype
- Blackeyed Susan, Coastal Plain NC



Alachua County Right of Way Wildflower Program

What we are attempting to preserve:

Lady Lupine,
Lupinus villosus
near Archer, FL, in
County maintained
ROW



Alachua County Right of Way Wildflower Program

What we are attempting to preserve:



Hooded Pitcher Plants, *Saracenia minor*, in County ROW near Evinston, FL.



Alachua County Right of Way Wildflower Program

What we are attempting to preserve:

Blue Skyflower, *Hydrolea corymbosa*, with pollinators in
County ROW on E CR1474



Alachua County Right of Way Wildflower Program

What we are attempting to preserve:

Two species of Milkweed, *Asclepias tuberosa* and *A. humistrata*, in ROW near Micanopy, FL



Alachua County Right of Way Wildflower Program

Pilot Site 2600 Block NW 16th Avenue



Alachua County Right of Way Wildflower Program

Recommended Actions for Establishing Wildflower Locations

1. Prep and hydro seed select portions of all 35 locations 5 – 10,000 ft² depending on total size of location, \cong 10 acres spread across all locations (\$40,000) then manage with appropriate cultural practices
2. Manage existing and proposed areas with signage and cultural practices, with reseeding and expansion of areas as needed
3. The 1st area to be seeded with wildflowers will be SW 91st Street, a County Scenic Road, and SW 8th Avenue

