



Roadway Grading (Unpaved/Unimproved Roads)

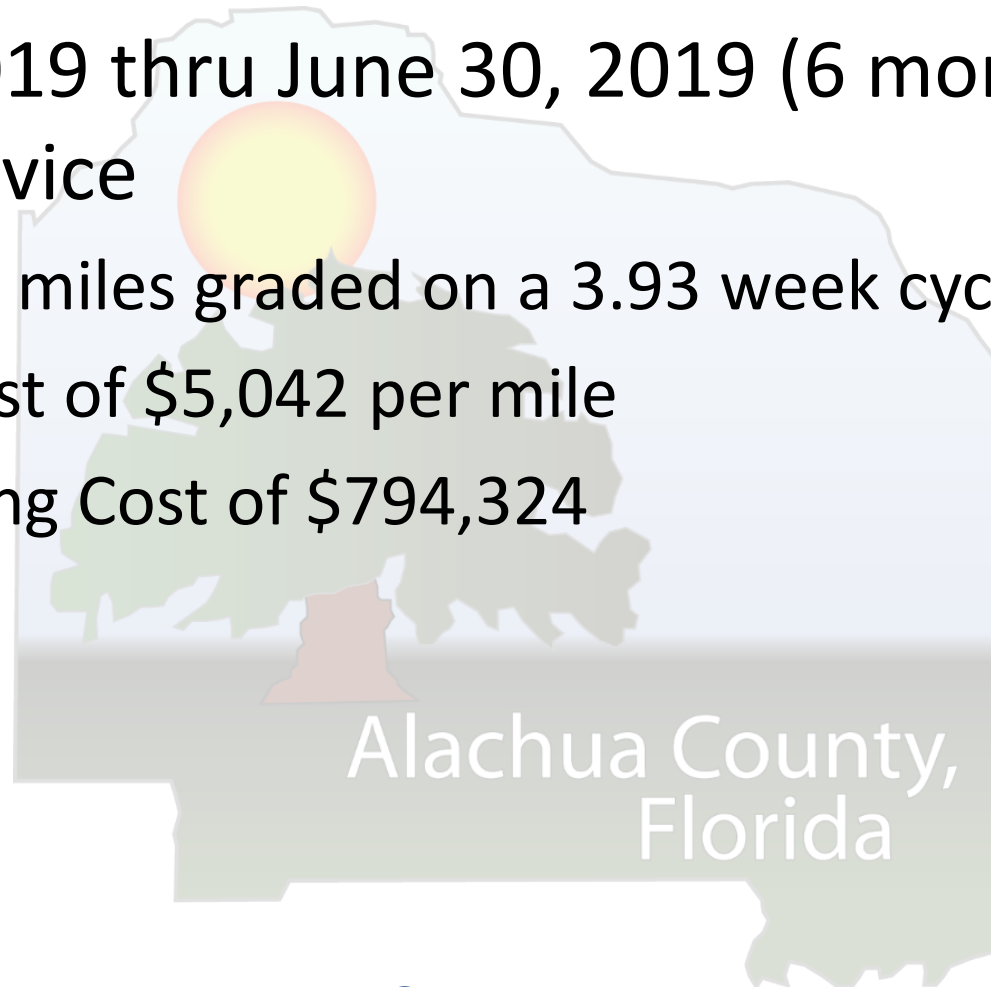
Level of Service

August 13, 2019

Ramon D. Gavarrete, P.E.
Public Works Director

Countywide Road Grading - Level of Service

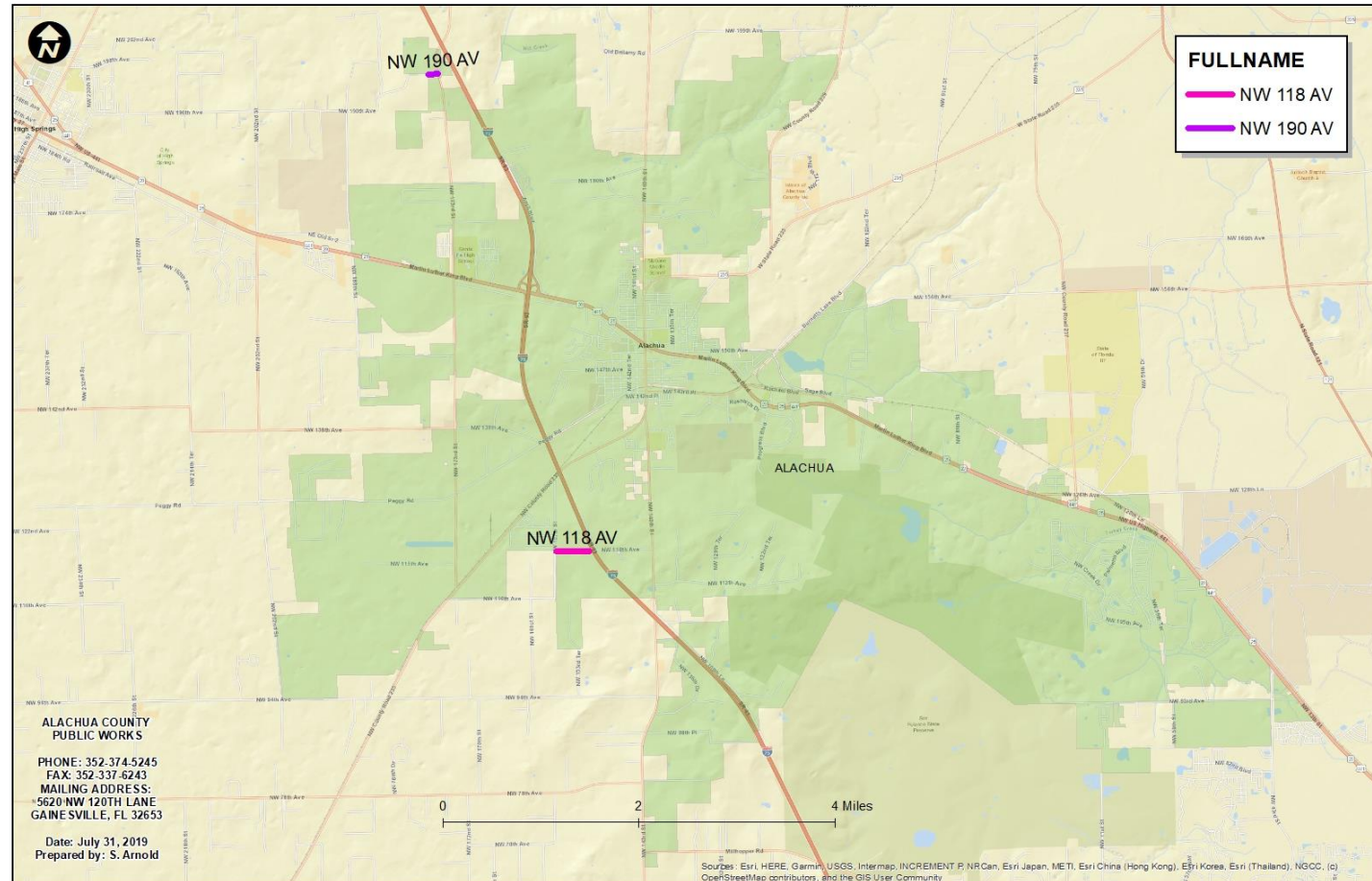
- From January 1, 2019 thru June 30, 2019 (6 months) project grading level of service
 - Approximately 158 miles graded on a 3.93 week cycle
 - Annual Grading Cost of \$5,042 per mile
 - Total Annual Grading Cost of \$794,324



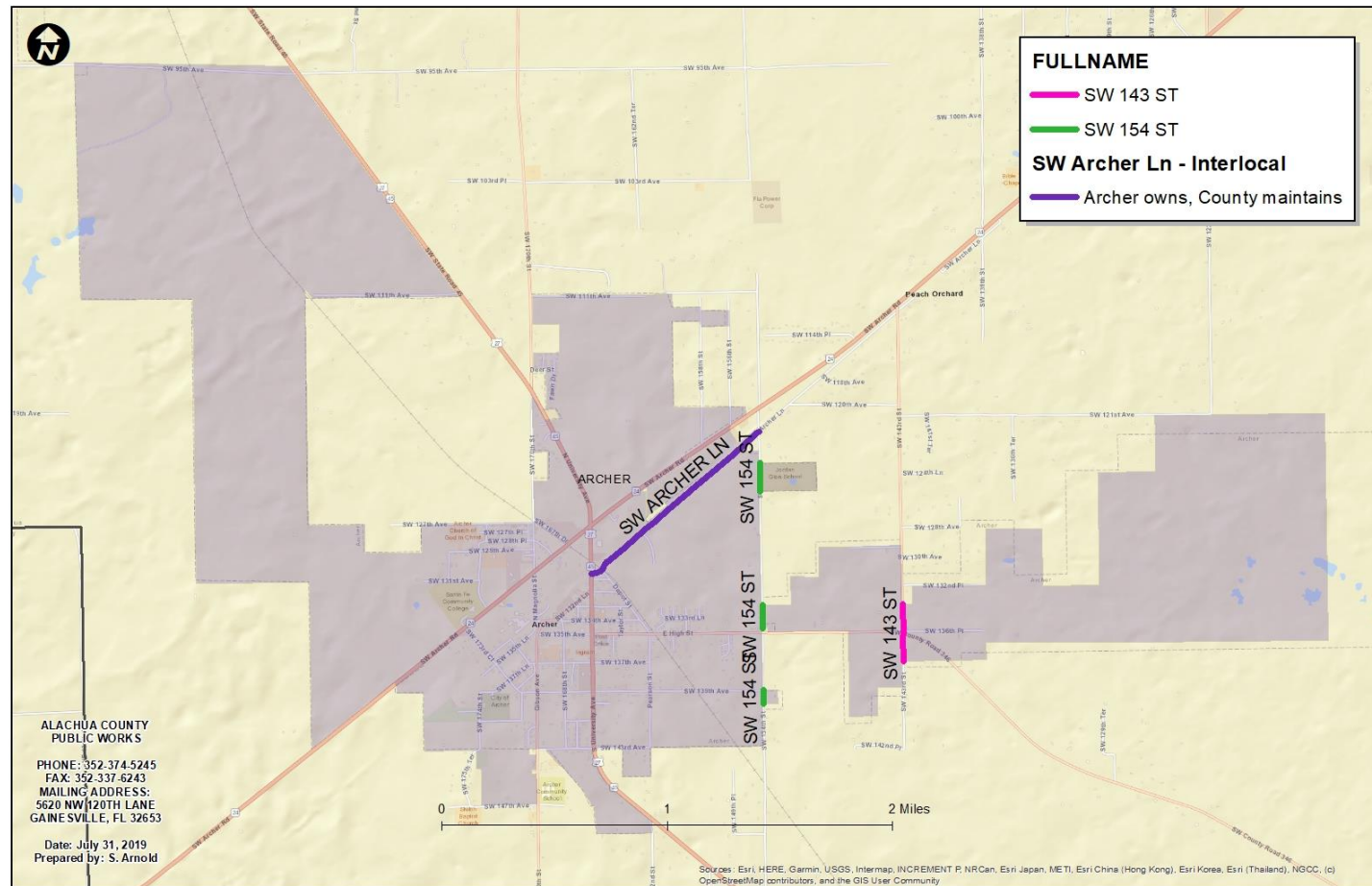
Countywide Road Grading - Level of Service

- 9.17 miles of County grading maintenance within a municipality boundary on a 3 week cycle.
 - 0.71 miles are completely within
 - NW 118th Ave – 0.34 miles within City of Alachua
 - NW 290th St - 0.37 miles within City of Newberry
 - 8.46 miles only clipped by the a municipality boundary
 - Annual cost per mile of \$3,923
 - Total annual grading maintenance cost \$39,259

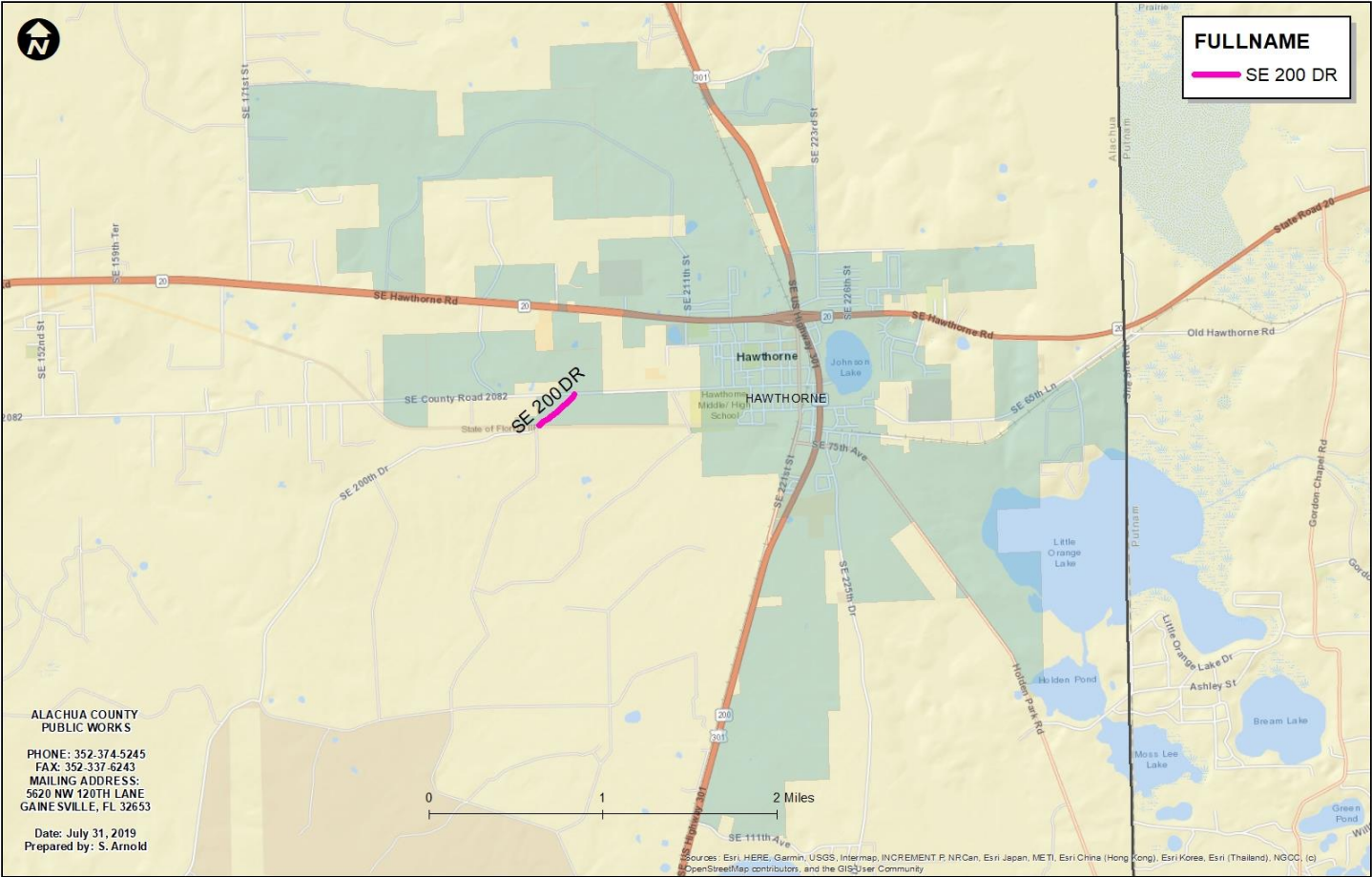
City of Alachua



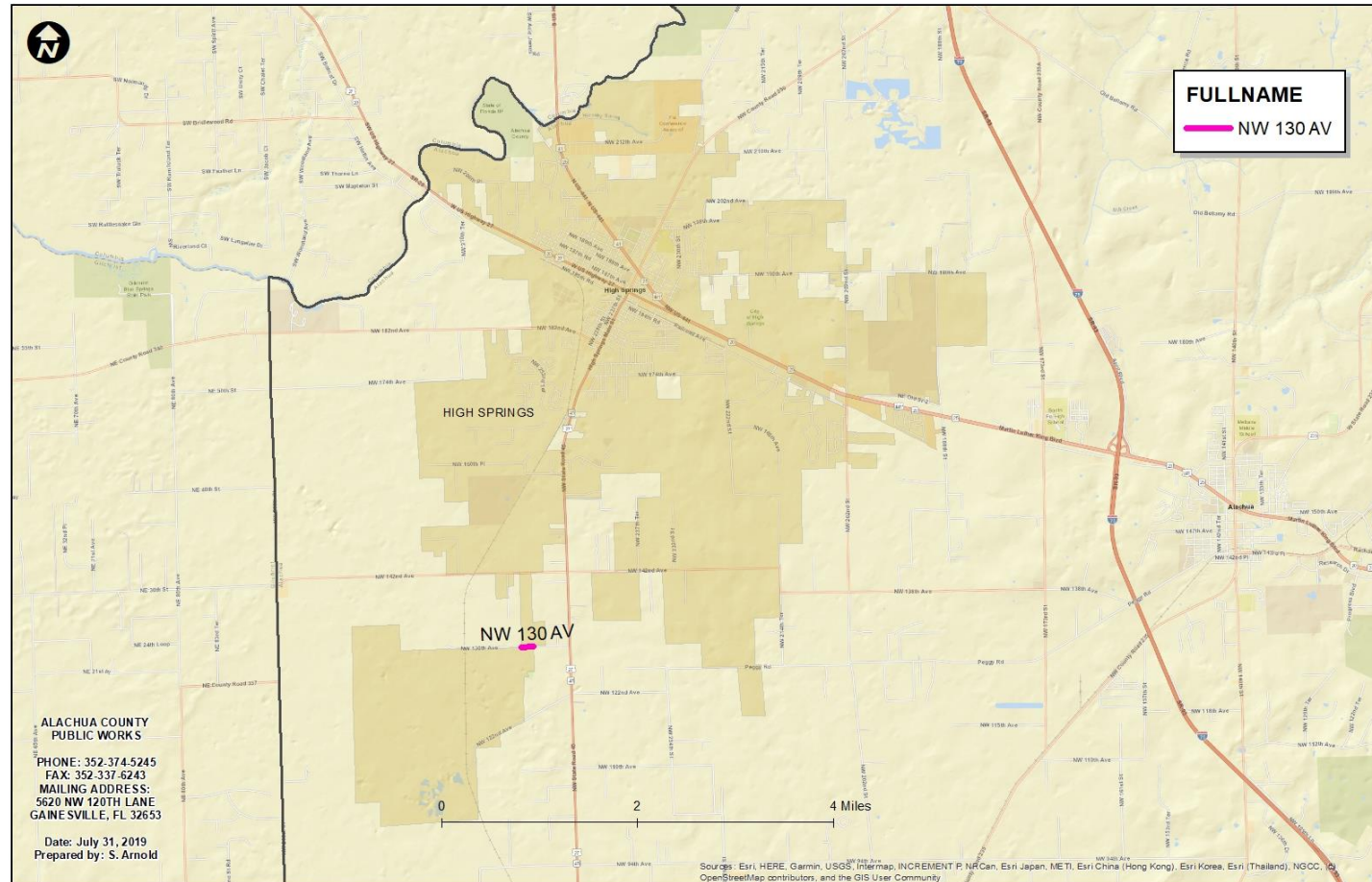
City of Archer



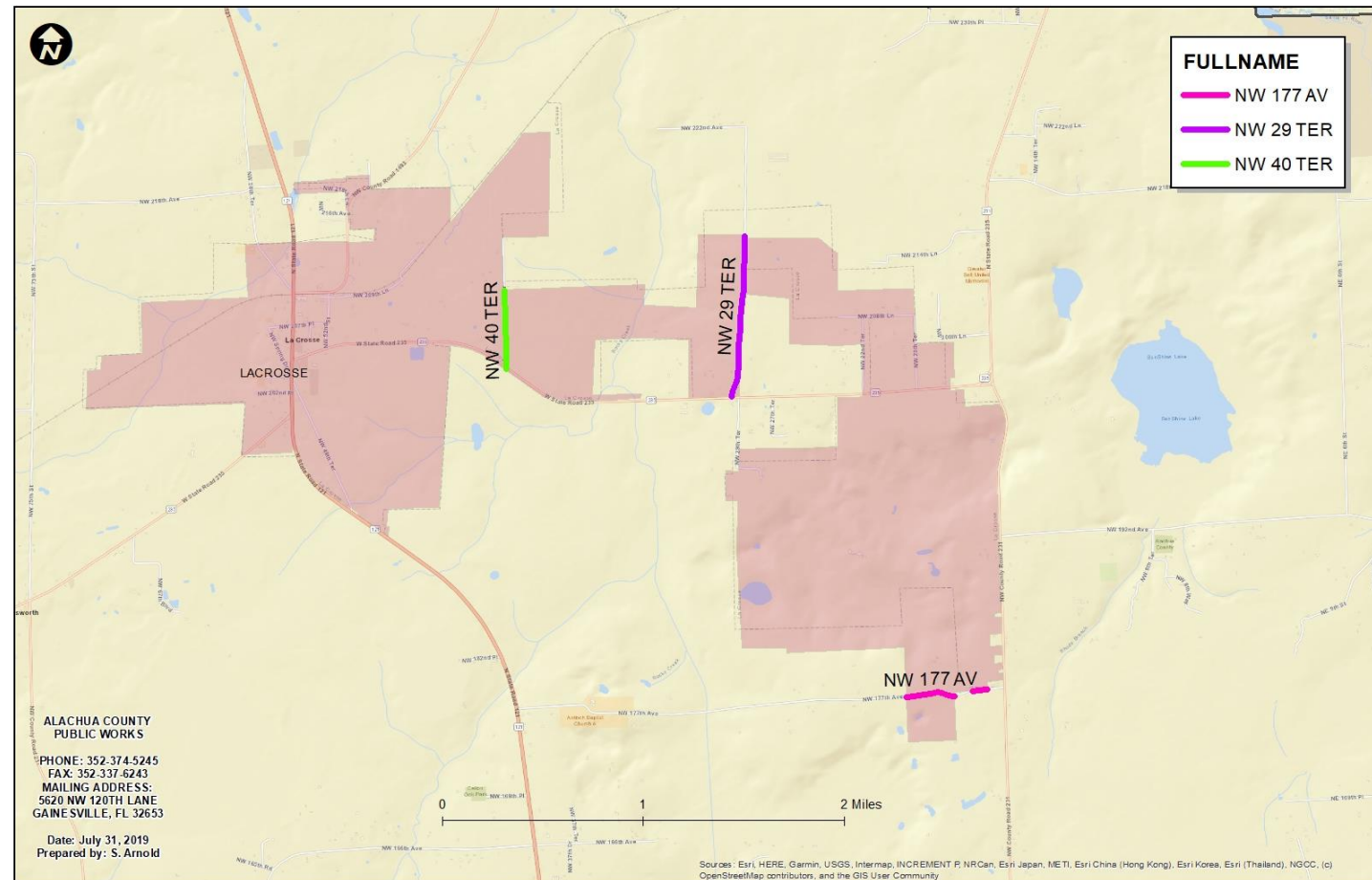
City of Hawthorne



City of High Springs



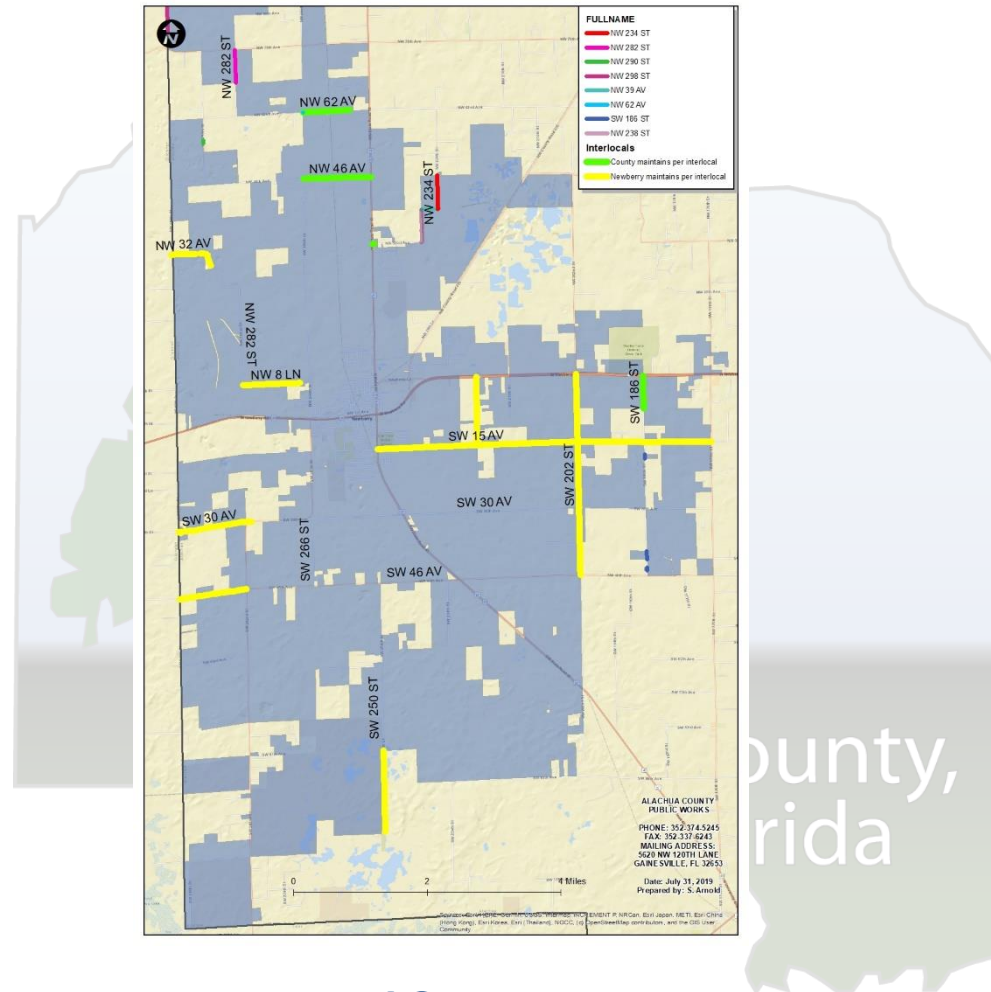
Town of Lacrosse



Town of Micanopy



City of Newberry



Recommendation

Receive presentation and provide staff with direction, if any.

