



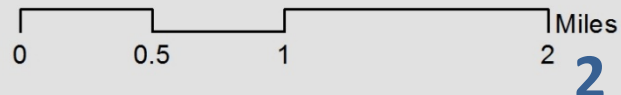
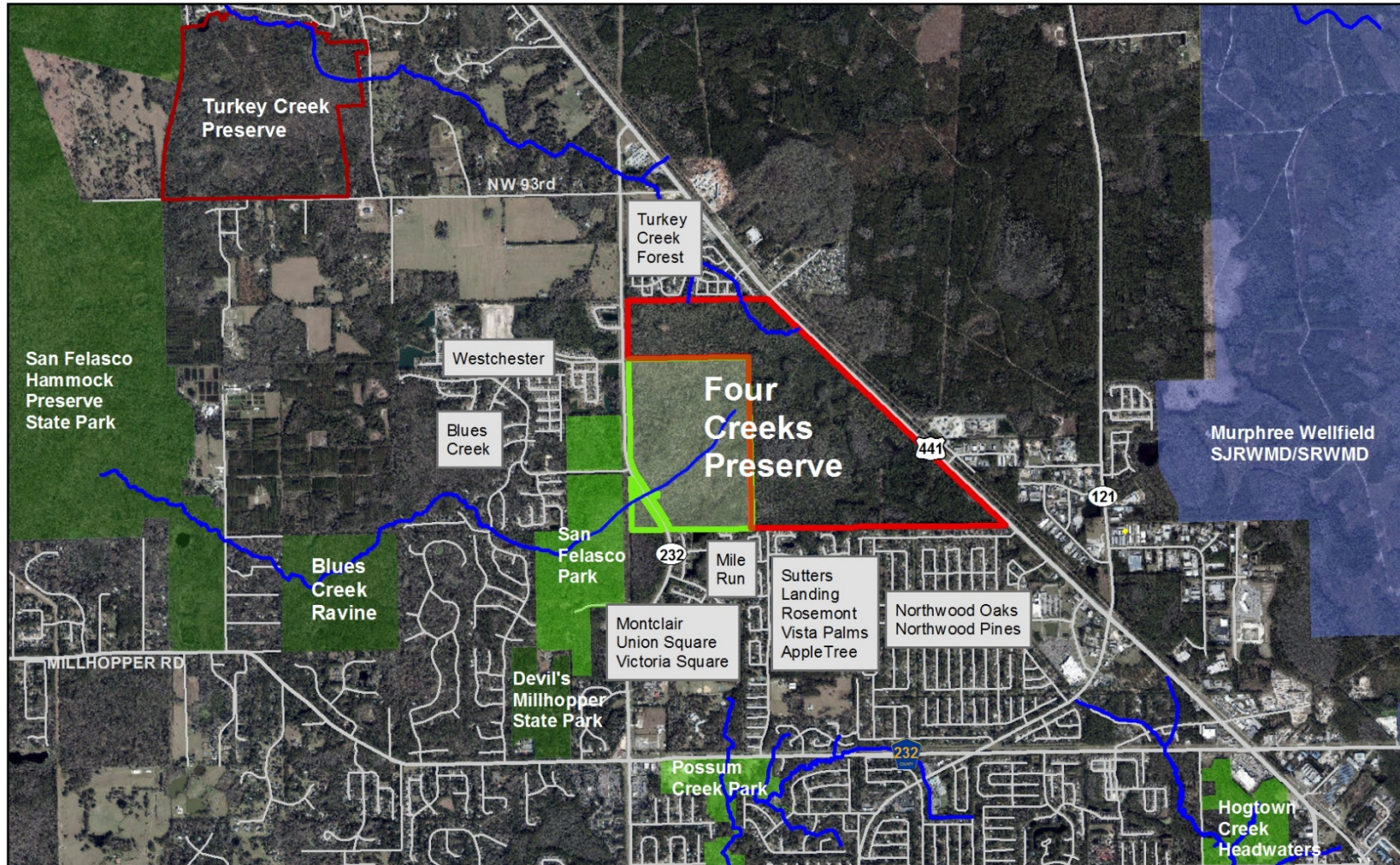
Four Creeks Preserve Initial Public Access Plan

**Aachua County Board of County Commissioners
Public Hearing: 8/27/19, 5pm**



Four Creeks Preserve Vicinity Map

Gainesville.
Citizen centered
People empowered



DISCLAIMER: This map and the spatial data it contains are made available as a public service, to be used for reference purposes only. The Alachua County Environmental Protection Department provides this information AS IS without warranty of any kind. The quality of the data is dependent on the various sources from which each data layer is obtained.

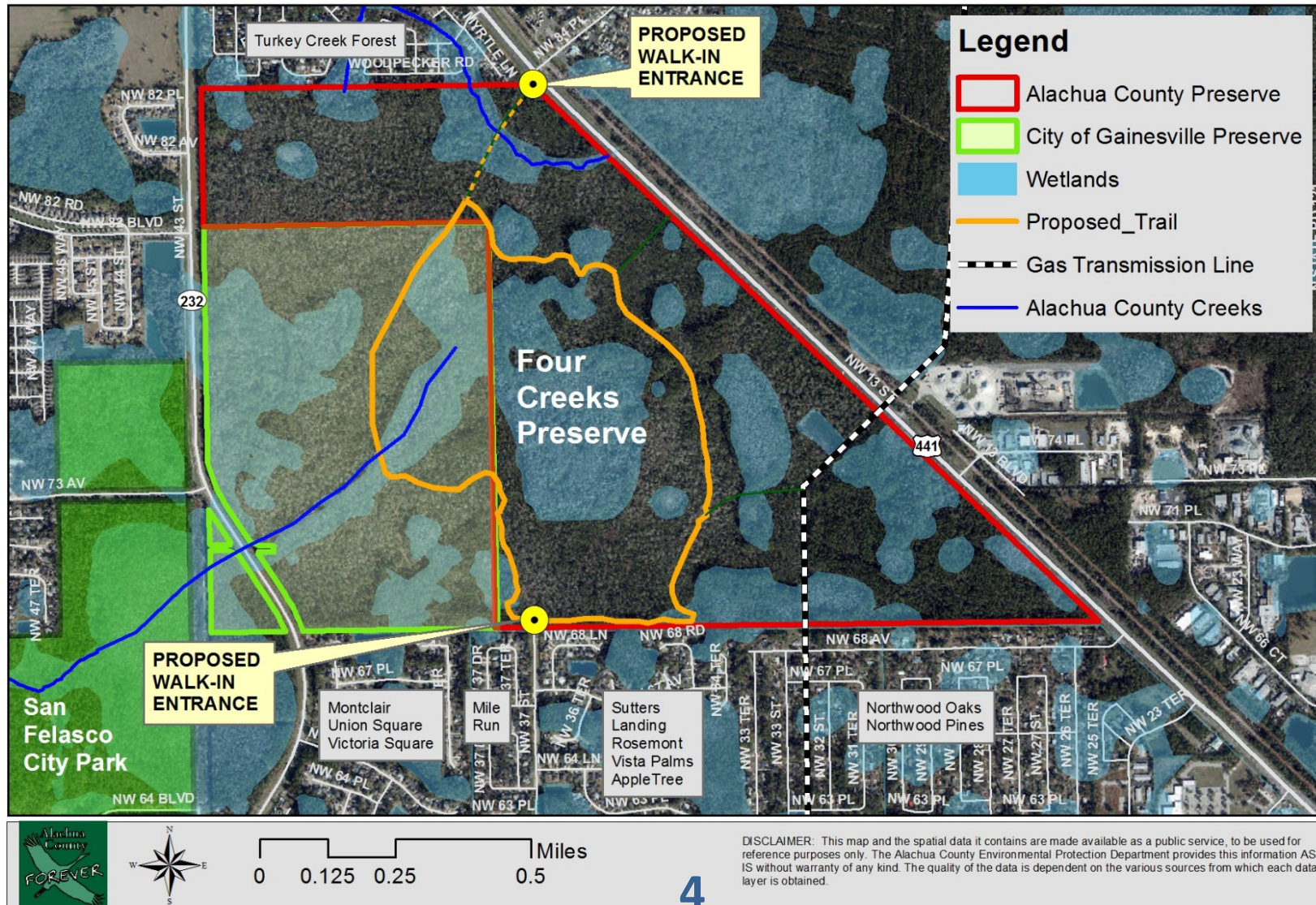
Public Access Plan

- Initial public access:
 - 2 walk-in entrances:
 - Southern entrance – off NW 37th Street
 - Northern entrance– off US Hwy 441
 - 2.5 mile public walking trail loop, using existing dim road/trail footprint
 - No authorized parking provided
 - Initial public opening planned for September 28, 2019 – National Public Lands Day
- Long-term access:
 - Following standard development and review of a preserve management plan the location for the main entrance to the preserve will be identified with goal of providing parking in that area.



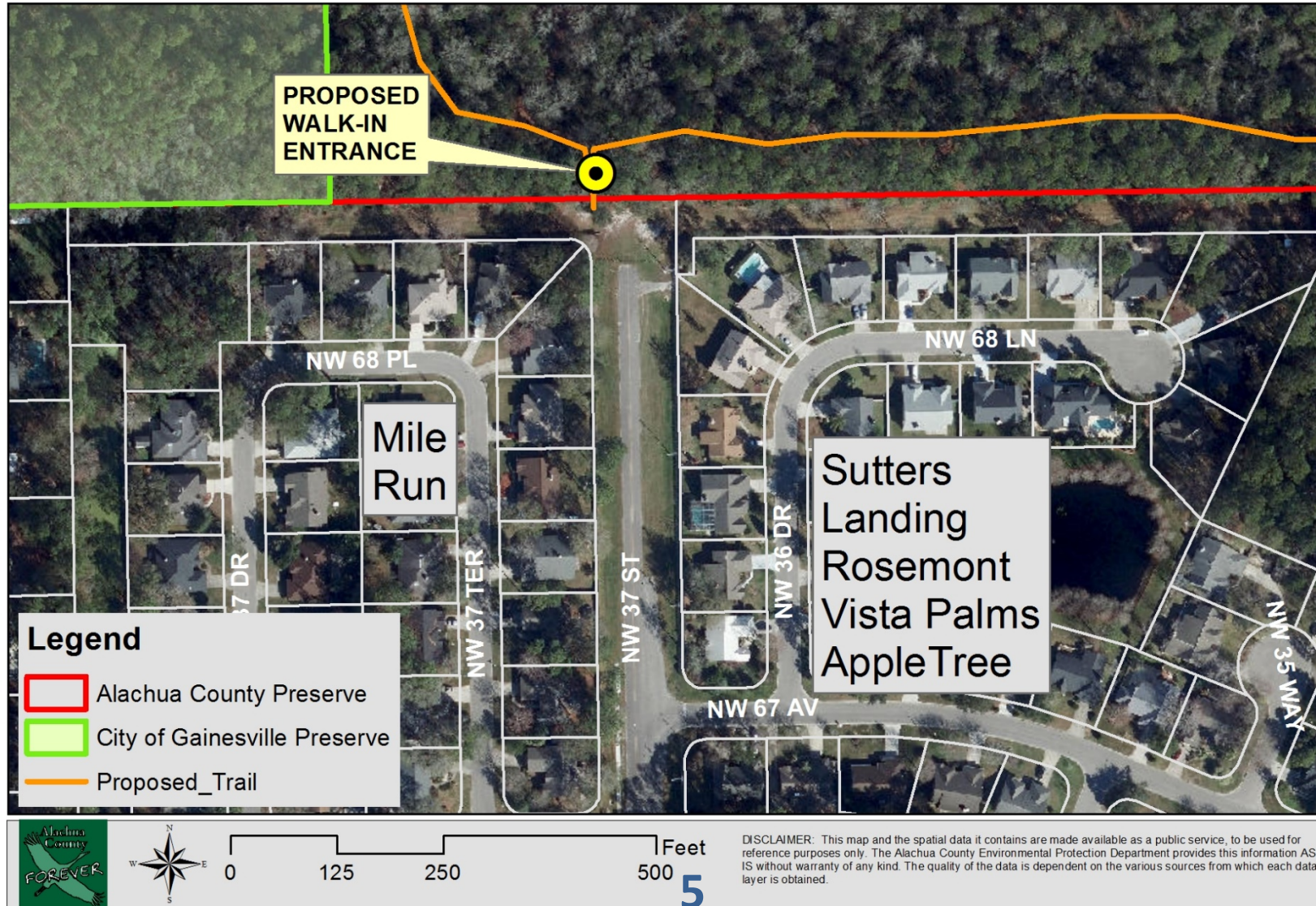
Four Creeks Preserve Initial Public Access Plan (Opening planned for 09/28/2019)

Gainesville.
Citizen centered
People empowered





Four Creeks Preserve NW 37th Street Area View



NW 37th Street Dead End



NW 37th Street ROW Views



Typical Upland Habitat



Wetland Examples

