



# **Stormwater Assessment Final Rate Public Hearing September 10, 2019**


Environmental Protection Department

# Staff Recommended Board Action

- Adopt the Stormwater Assessment Preliminary Rate Resolution authorizing a \$40 Equivalent Residential Unit (ERU) rate




# Previous Board Actions

- July 9, 2019: Adopted Preliminary Rate Resolution for FY20
  - Sept 11, 2018: Adopted Final Rate Resolution for FY19
  - FY 18 and FY19: Adopted 50/50 budget allocation between  
Drainage Maintenance and Water Quality
  - 2006: Enacted Ordinance 06-13, authorizing the imposition of  
Stormwater Assessments and Fees against real property specifically  
benefitted by the County's Stormwater Management Services
- 

# Basis for \$40 Equivalent Residential Unit (ERU)

Assuming 50/50 Allocation of Additional Budget:

- \$236,215 for Public Works Drainage Maintenance to cover personnel expenses for four (4) current laborer positions and supporting operational expenses
  - \$236,215 for additional FY20 Environmental Protection Water Quality Projects
- 

# Proposed Stormwater Assessment

## \$40 Equivalent Residential Unit Rate



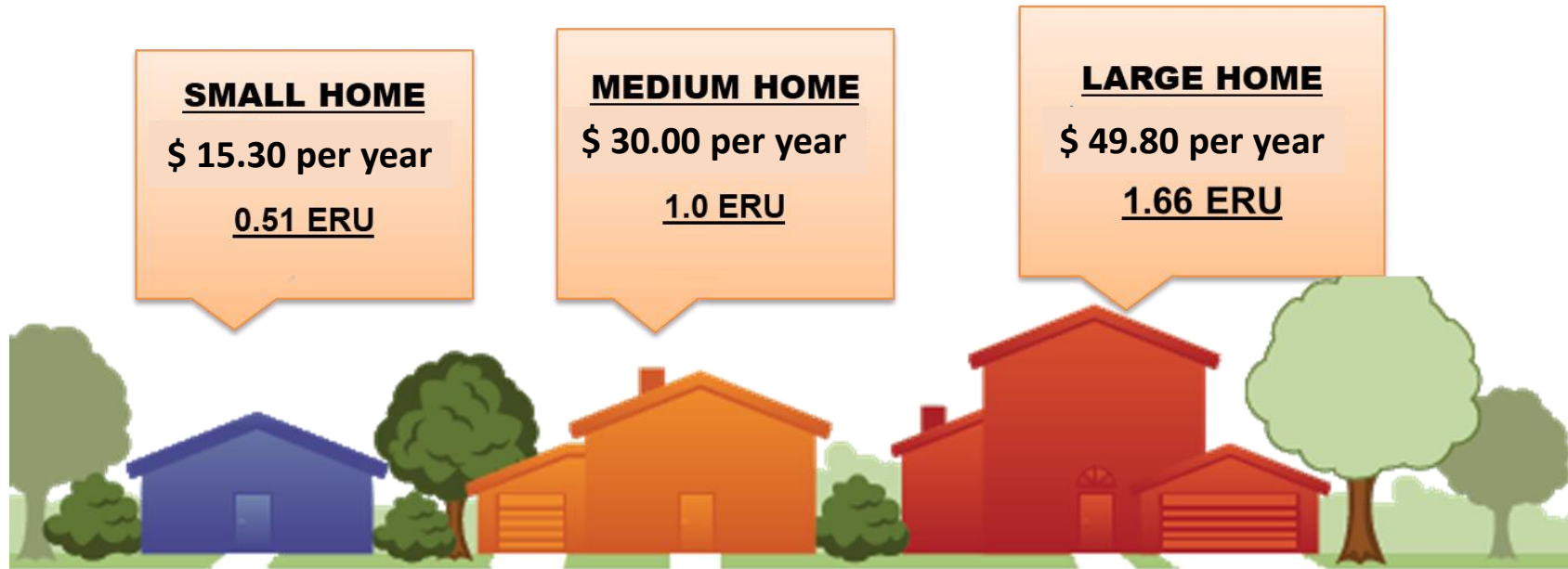
Estimated Revenues: \$ 1,889,715

Proposed Expenditures: \$1,889,715

\$ 944,857 EPD Water Quality Improvement Projects

\$ 944,858 Public Works Drainage Operation and Maintenance

# Proposed Stormwater Assessment \$30 Equivalent Residential Unit Rate



Estimated Revenues: \$ 1,417,286

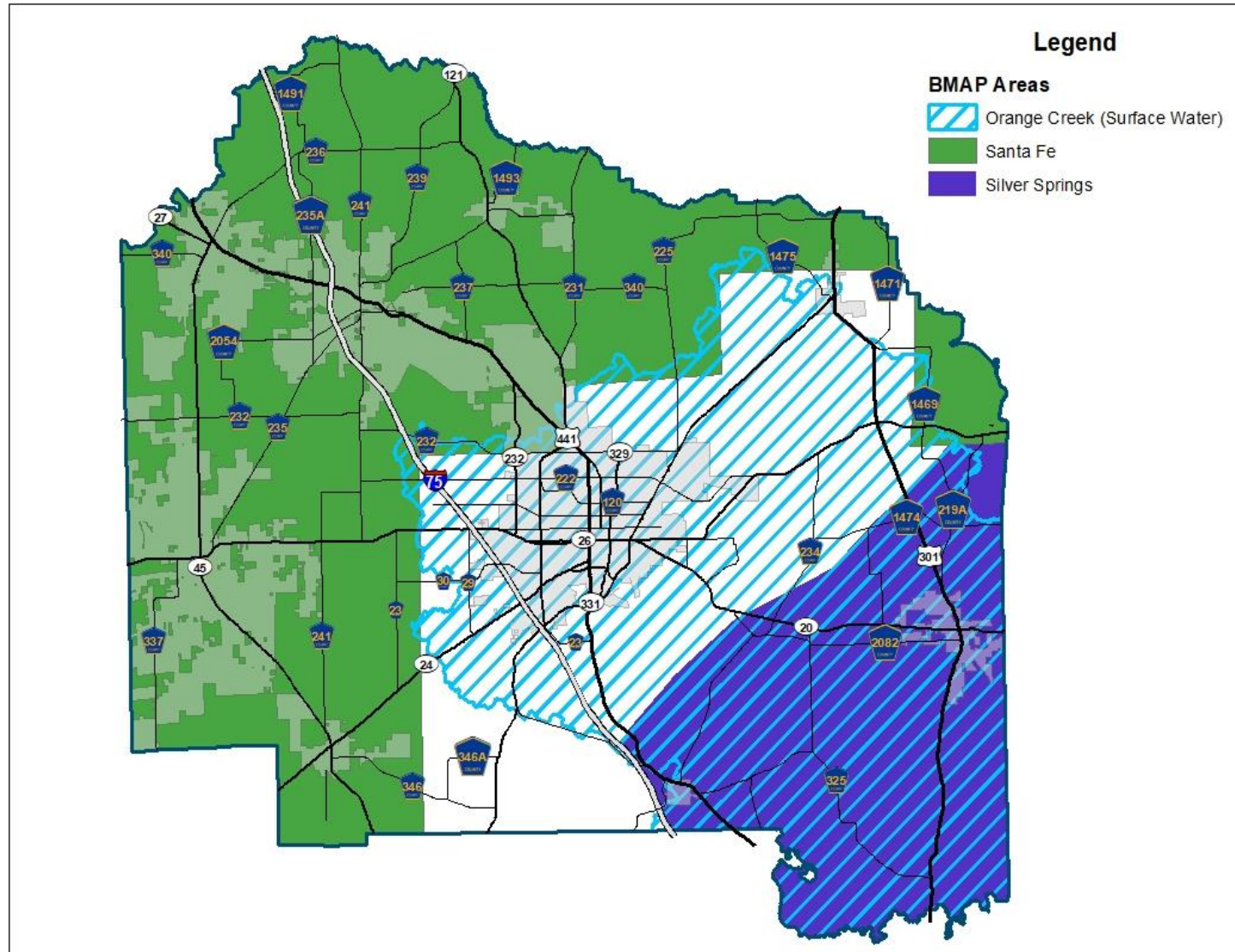
Proposed Expenditures: \$ 1,417,286

\$ 708,643 EPD Water Quality Improvement Projects


\$ 708,643 Public Works Drainage Operations and Maintenance



# Water Quality Projects Implement Portions of Basin Management Action Plans (BMAPs)



# Additional FY20 Water Quality Projects

- Mill Creek Sink Retrofit \$ 20,000
  - Newnans Lake Phase III \$ 80,000
  - North Main Street Outflow Filter \$ 100,000
  - NE 22<sup>nd</sup> Lane Erosion Control \$ 20,000
  - Haile Blvd/Parker Rd. Retrofit \$ 20,000
- 



# Staff Recommended Board Action

- Adopt the Stormwater Assessment Preliminary Rate Resolution authorizing a \$40 Equivalent Residential Unit (ERU) rate

