



# **SQUIRREL RIDGE PARK**

## **Final Schematic Plan**

Alachua County Board of County Commissioners

September 24, 2019



# Alachua County Wild Spaces & Public Places



Squirrel Ridge Park Improvements are a Wild Spaces Public Places (WSPP) project

- Half cent sales tax initiative passed by Alachua County voters in 2016
  - *Extend the Alachua County Forever Program to acquire and improve environmentally sensitive lands*
  - *To create, improve and maintain parks and recreational facilities*





# Design Process

## Current Phase : Master Planning

- Identify improvement opportunities
- Propose new, needed park elements
- Gather public input
- Analyze and provide initial layout
- Prepare the design concept

## Next Phase : Construction Documents

- Further develop design
- Detailing and engineering
- Prepare documents for bidding

## Next Phase : Submittal of Permits

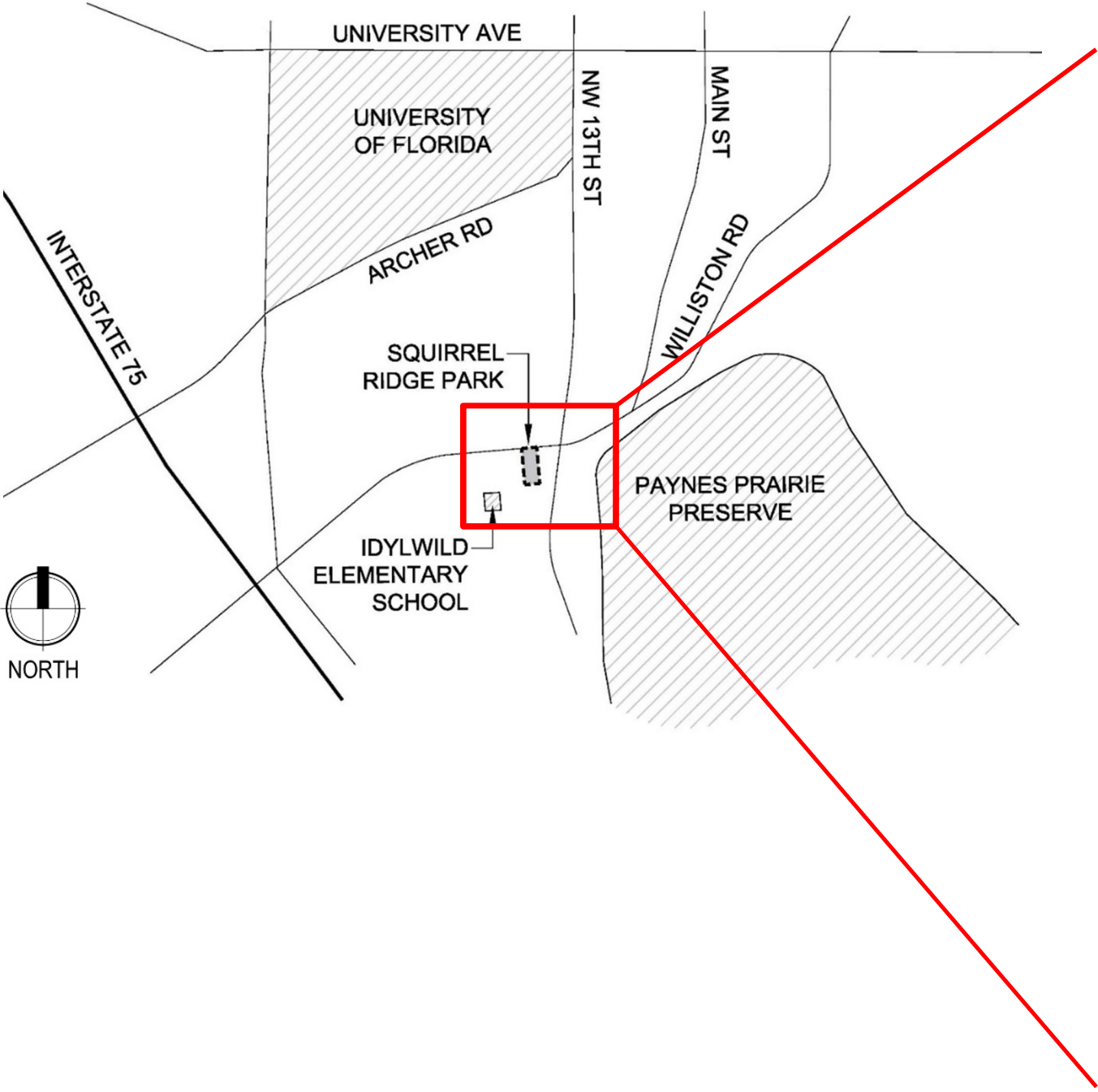
- Alachua County, GRU, and the Water Management District

## Start Construction





# Squirrel Ridge Park Location





# Design Goals

1. **Destination:** Develop a destination park that also serves the neighborhood.
2. **Connections:** Enhance connections to surrounding residential areas and internally between park elements.
3. **Improve:** Support, upgrade, and expand current uses.
4. **New:** Add new enhancements complimentary to existing.
5. **Welcome:** Create a more welcoming park entry.
6. **Security:** Provide a safe park experience.





# Existing Conditions



## Existing Elements

### North:

- Gravel parking
- Multipurpose field
- Historic signage

### Central:

- Crime Victims Memorial garden
- Playground
- Yoga pavilion

### South:

- Dog park

### West:

- Scenic roadway





# Public Input



- **June 18, 2019:** R.O.S.C.O. Presentation
- **July 16<sup>th</sup>, 2019:** Public Open House at Idylwild Elementary
  - Nearly 40 attendees
  - Various stations for review & input
  - Handouts for follow up input
- **August 7<sup>th</sup>, 2019:** Follow up meeting with dog park users at the park
- Received emails and additional input following above meetings
- Held review meetings with staff and refined the plan before/after each



# Public Input – Park Management



## Park Maintenance:

- Litter removal
- Weed control in Memorial Garden
- Field Improvements: Removal of pests and sandspurs in field, filling in holes, condition of turf
- More frequent mowing in all areas
- Drainage improvements
- Dog park low areas improvements
- Management of Dog Park items brought by visitors

## Rules and Regulations:

- Posting of Dog Park rules
- Emergency contact information
- Emergency access



# Public Input – Park Design

## Overall Schematic Plan





# Squirrel Ridge Park

## 1. Northern Areas



- Enhance:
  - Parking
  - Multipurpose field
- Add:
  - Improved paved and gravel parking, ADA
  - New paved loop trail
  - Paved walks to Williston Road
  - Unpaved nature trail
  - Entry terrace with historic and new signs
  - Terraced seating at field with picnic pavilion
  - Picnic pavilion with drinking fountain and grill
  - Lighting and site furnishings



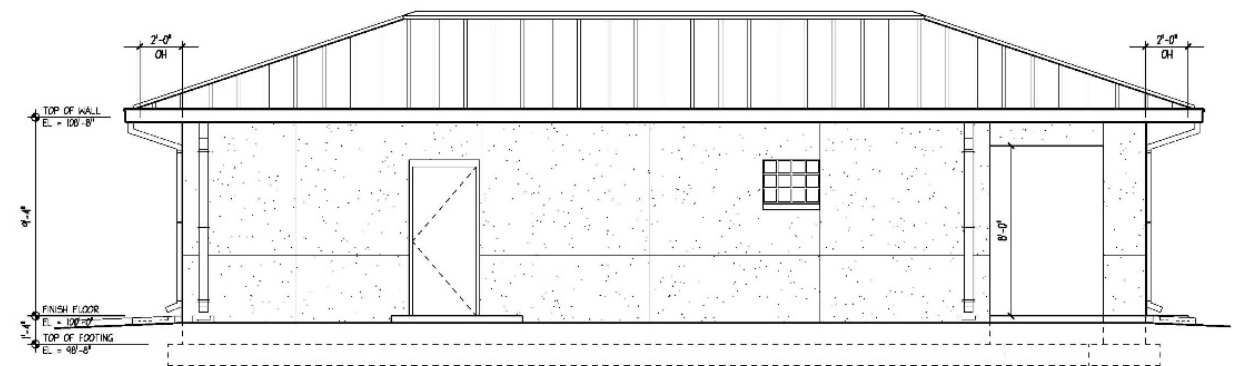


# Squirrel Ridge Park

## 2. Central Areas



- Enhance:
  - Yoga pavilion
  - Preserve and expand Victims Memorial areas
  - Playground
  - Connectivity
- Add:
  - Loop/walks, ADA
  - Fitness stations
  - Multipurpose court with basketball and pickleball
  - Restroom and office building with small porch for picnic
  - Shaded playground
  - Picnic pavilion with grill and other picnic areas
  - Lighting and site furnishings



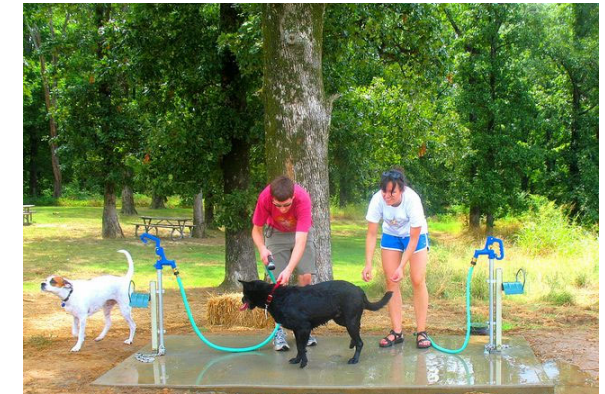


# Squirrel Ridge Park

## 3. Southern Areas



- Enhance:
  - Dog park
  - Wet areas
- Add:
  - Dog run along off-leash dog areas
  - Double gates and walk connections
  - Dog wash station and entry pavilion, rules posting
  - Dog play and training equipment
  - Wet dog play elements
  - Shade pavilions
  - Seating
  - More dog waste stations and toy collection baskets





# Recommendations



- Approval of the Squirrel Ridge Park Schematic Plan
- Authorize Staff to procure design and engineering services to complete construction documentation and permitting for Squirrel Ridge Park

***Thank you!***

PAUL  
STRESING  
ASSOCIATES  
INC.

ARCHITECTURE  
SPACE PLANNING  
INTERIOR DESIGN

MANLEY DESIGN, LLC  
Landscape Architecture · Site Planning

CHW  
Professional Consultants



# Squirrel Ridge Park

## Overall Master Plan

