

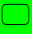

## SW 8<sup>th</sup> Avenue Drainage Project Tree Impact Report

Neil Greishaw – Public Works Horticulturist

This report is being generated due to a drainage enhancement project along SW 8<sup>th</sup> Avenue, just west of the intersection with SW 91<sup>st</sup> Street where there will be impact to existing trees. This project takes place within drainage easements located within the following (4) tax parcels: 06660-010-007 (6.01 ac.), 06660-010-003 (12.67 ac.), 06664-018-002 (1.99 ac.), and 06664-018-001 (1.91 ac.).

Where trees being impacted are defined as regulated trees per Alachua County Unified Development Land Code chapter (ULDC) 406.10 (a), defined as a tree with a diameter at breast height (DBH) of 8" or greater. In the two parcels containing less than 2 acres are, there will be impact within the driplines of regulated or heritage trees, per the ULDC, but no regulated or heritage trees will be removed.

In the drainage easement occurring on the (2) parcels on the north side of SW 8<sup>th</sup> Avenue, there are several trees which will be impacted by the installation of a berm. Starting from the western limit of the proposed berm and moving eastward towards SW 91<sup>st</sup> Street, the following list of trees with respective sizes are listed as either being impacted by changes to grade or are otherwise being recommended for removal as part of the scope of work for the drainage project:\*

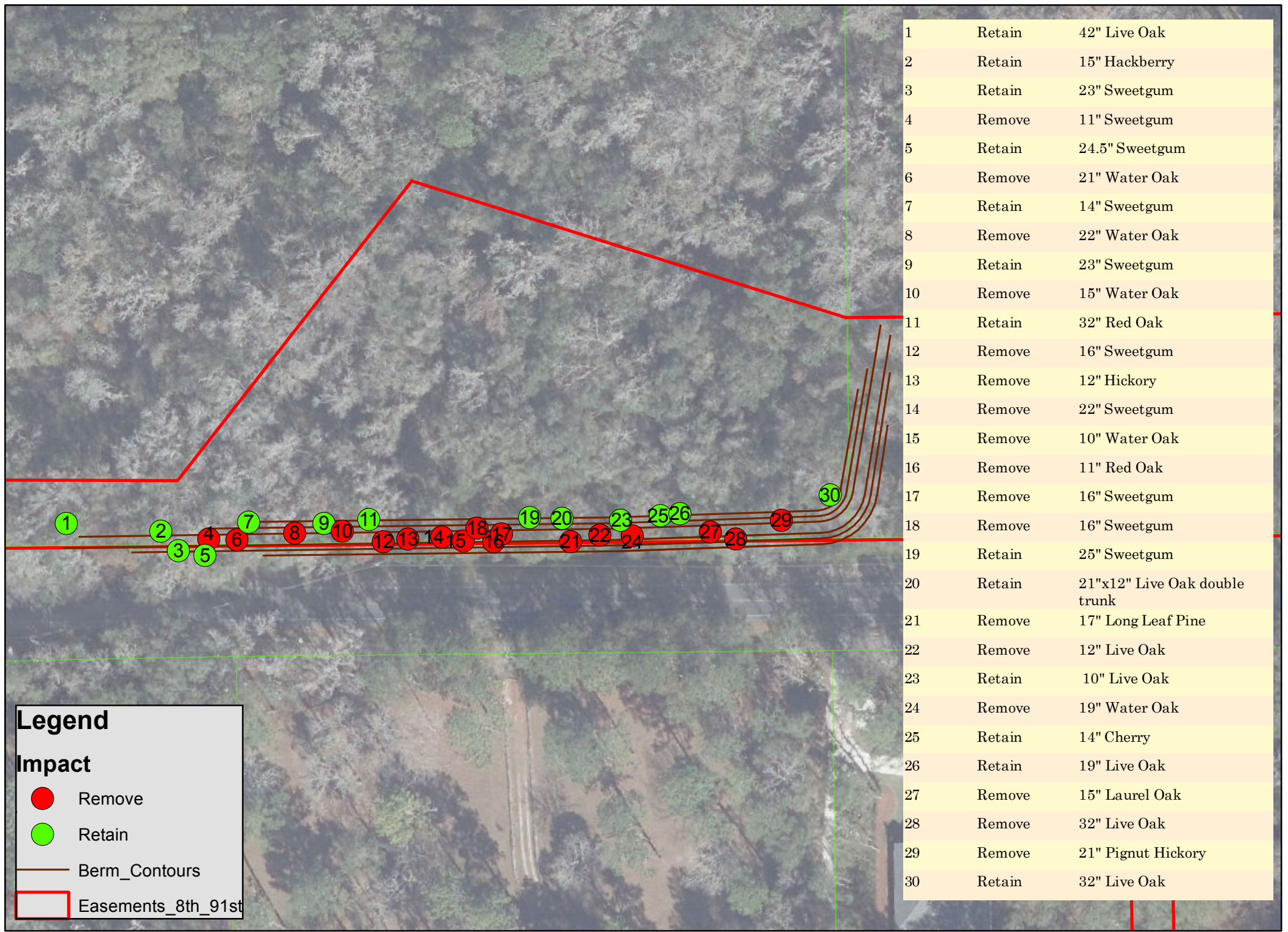
Legend:  Retain  Remove
--

1. 42" Live Oak just outside western limit of work; **Retain**, minimal impact from grade change
2. 15" Hackberry; **Retain**, minimal impact from grade change
3. 23" Sweetgum; **Retain**, some potential impact from grade change
4. 11" Sweetgum; **Remove**, impact from grade change, will be
5. 24.5" Sweetgum; **Retain**, some impact from grade change
6. 21" Water Oak; **Remove**, impact from grade change
7. 14" Sweetgum; **Retain**, some impact from grade change
8. 22" Water Oak; **Remove**, heavy impact from grade change, tree is located in crest of proposed berm; tree is also leaning over road and toward overhead utilities
9. 23" Sweetgum; **Retain**, some impact from grade change
10. 15" Water Oak; **Remove**, impact from grade change located near crest of proposed berm
11. 32" Red Oak; **Retain** and monitor, adjust slope of berm to minimize impact from grade change
12. 16" Sweetgum; **Remove**, impact from grade change
13. 12" Hickory; **Remove**, impact from grade change

14. 22" Sweetgum; Remove, heavy impact from grade change extensive sap sucker damage
15. 10" Water Oak; Remove, heavy impact from grade change
16. 11" Red Oak; Remove, heavy impact from grade change
17. 16" Sweetgum; Remove, heavy impact from grade change
18. 16" Sweetgum; Remove, heavy impact from grade change
19. 25" Sweetgum; Retain, north side of proposed berm adjacent to utility pole
20. 21" x 12" Live Oak with double trunk; Retain, adjust berm to minimize impact from grade change
21. 17" Long Leaf Pine; Remove; Heavy impact from grade change, occurs near crest of berm
22. 12" Live Oak; Remove, heavy impact from grade change, occurs near crest of berm
23. 10" Live Oak; Retain, adjust berm to minimize impact
24. 19" Water Oak; Remove, heavy impact from grade change and location relative to berm
25. 14" Cherry; Retain, some impact from grade change, located along northern peripheral
26. 19" Live Oak; Retain some impact from grade change within dripline
27. 15" Laurel Oak; Remove; located in crest of proposed berm, will be heavily impacted by grade change
28. 32" Live Oak; Remove, located in crest of berm and will be heavily impacted by grade change
29. 21" Pignut Hickory; Remove, located in crest of berm and will be heavily impacted by grade change
30. 32" Live Oak; Retain, berm has been shifted directionally to minimize impact from grade change

\*All measurements are in DBH, diameter at breast height (4.5' above grade)

As per mitigation standards in place with the Department of Growth Management, mitigation for impacted and removed trees will call for replanting of up to (17) trees. Species and locations within the site are pending approval of project and final outcome of earthwork.



100 50 0 100 Feet