

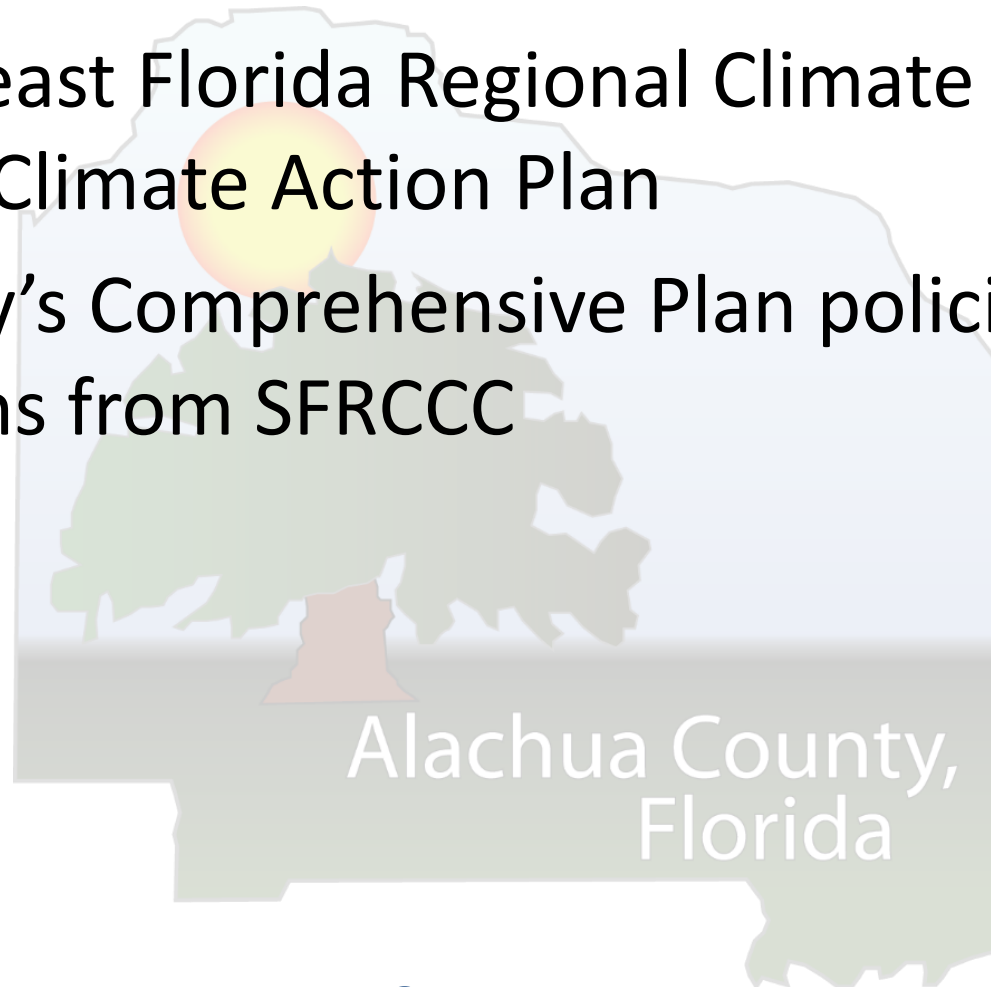


Alachua County Planning Policies in Relation to the Southeast Florida Regional Climate Compact

**Alachua County
Environmental Protection Department
September 2019**

Staff Follow Up

- Reviewed the Southeast Florida Regional Climate Change Compact (SFRCCC) - Climate Action Plan
- Reviewed the County's Comprehensive Plan policies with the recommendations from SFRCCC



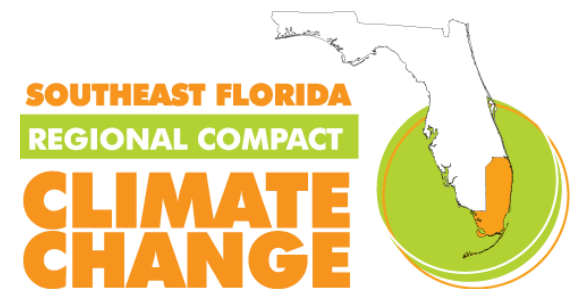
Southeast Florida Regional Climate Change Compact (SFRCCC)



- Started in 2010 with coastal Broward, Miami-Dade, Monroe, and Palm Beach Counties (representing over 6.2 million residents and 2017 GDP of \$344.9 Billion).
- Compact's primary concern is sea level rise
- Compact represents 39 local governments and federal, state, regional, nonprofit, academic, private sector partners,
- Convene annual summit to identify emerging issues (650 attended their last summit)

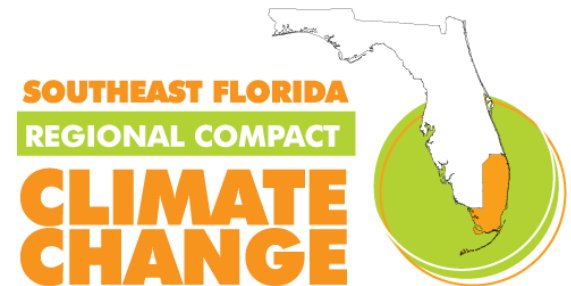
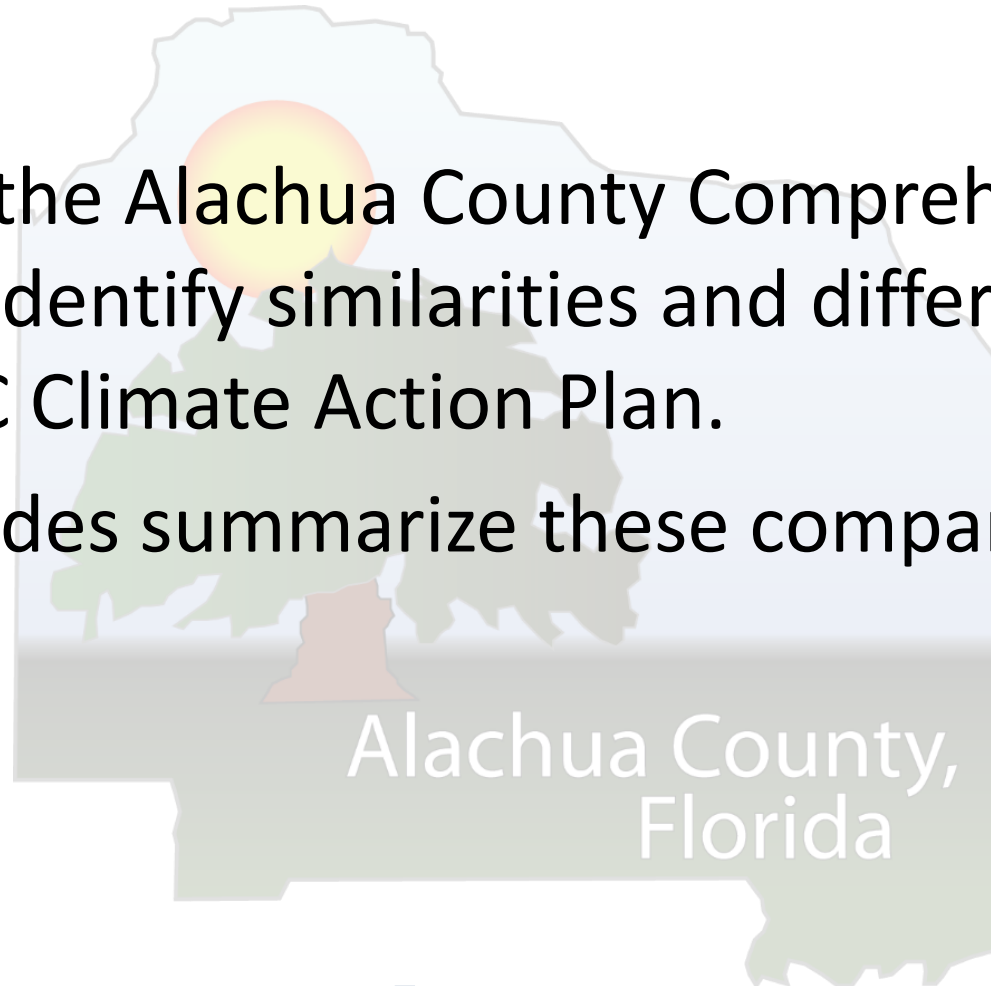
Southeast Florida Regional Climate Change Compact (SFRCCC) Climate Action Plan - Categories

- Agriculture
- Energy and Fuel
- Risk Reduction & Emergency Management
- Natural Systems and Water
- Public Health
- Public Outreach, Engagement, & Advocacy
- Regional Economic Resilience
- Social Equity
- Sustainable Communities & Transportation
- Water & Stormwater
- Regional Coordination



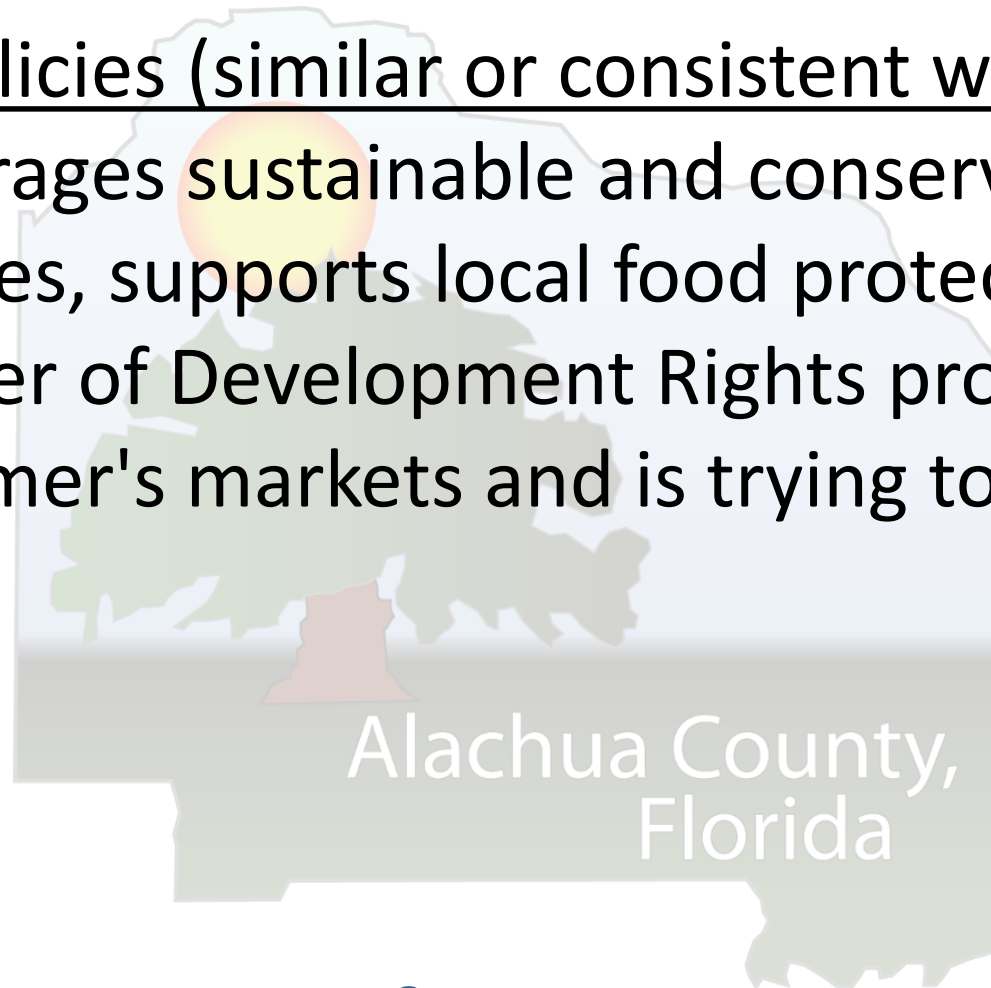
Southeast Florida Regional Climate Change Compact (SFRCCC) Climate Action Plan - Categories

- Staff compared the Alachua County Comprehensive Plan policies to identify similarities and differences with the SFRCCC Climate Action Plan.
- The following slides summarize these comparisons by category.



Agriculture

- Alachua County Policies (similar or consistent with SFRCCC strategies) - Encourages sustainable and conservation-oriented agricultural practices, supports local food protection and BMPs, has a Transfer of Development Rights programs, promotes local farmer's markets and is trying to eliminate food deserts.



Agriculture

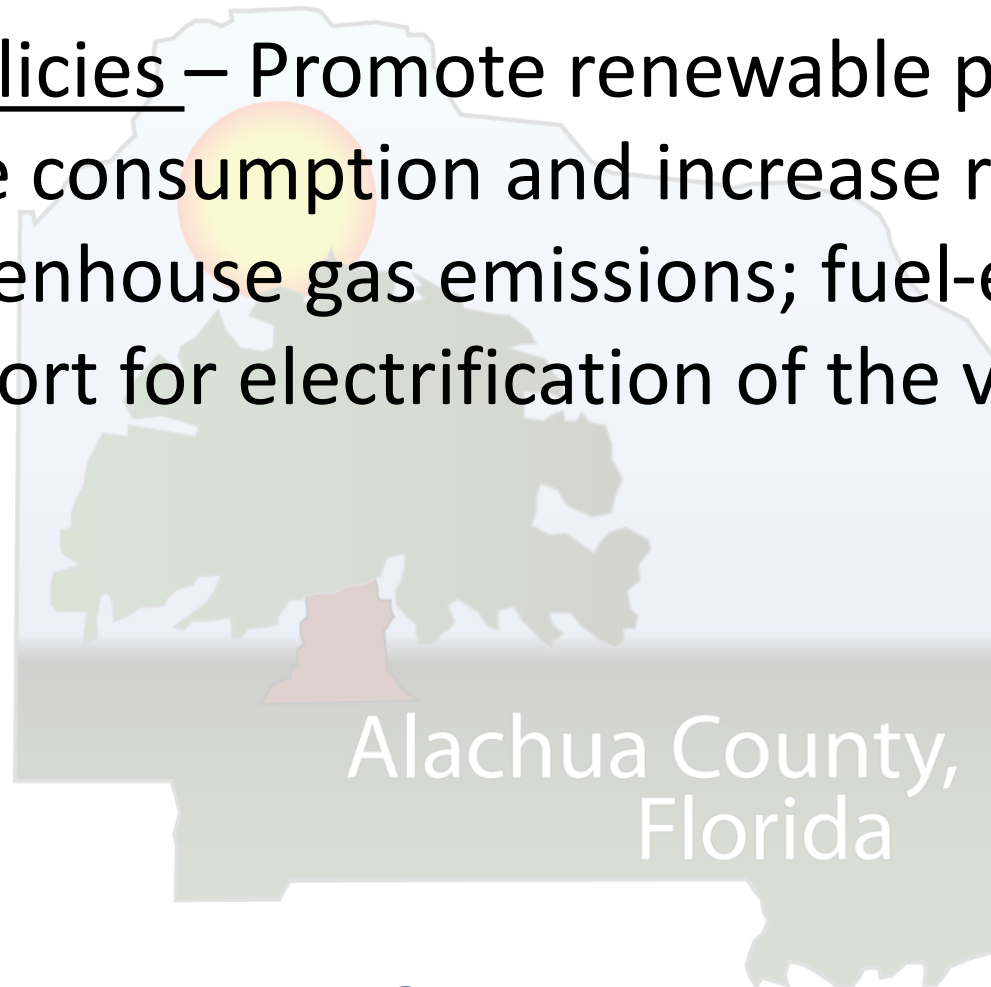
- What are we currently updating – Increasing the focus on local foods, local farmer's markets, corner stores, and trying to eliminate food deserts.
- What more can we do? – Seek critical agricultural resource designation, research climate-related needs for Ag (IFAS?), more focus on protecting our soils



Alachua County,
Florida

Energy and Fuel

- Alachua County Policies – Promote renewable practices and technology; reduce consumption and increase renewable energy, reduce greenhouse gas emissions; fuel-efficient vehicle fleet, provide support for electrification of the vehicle fleet.

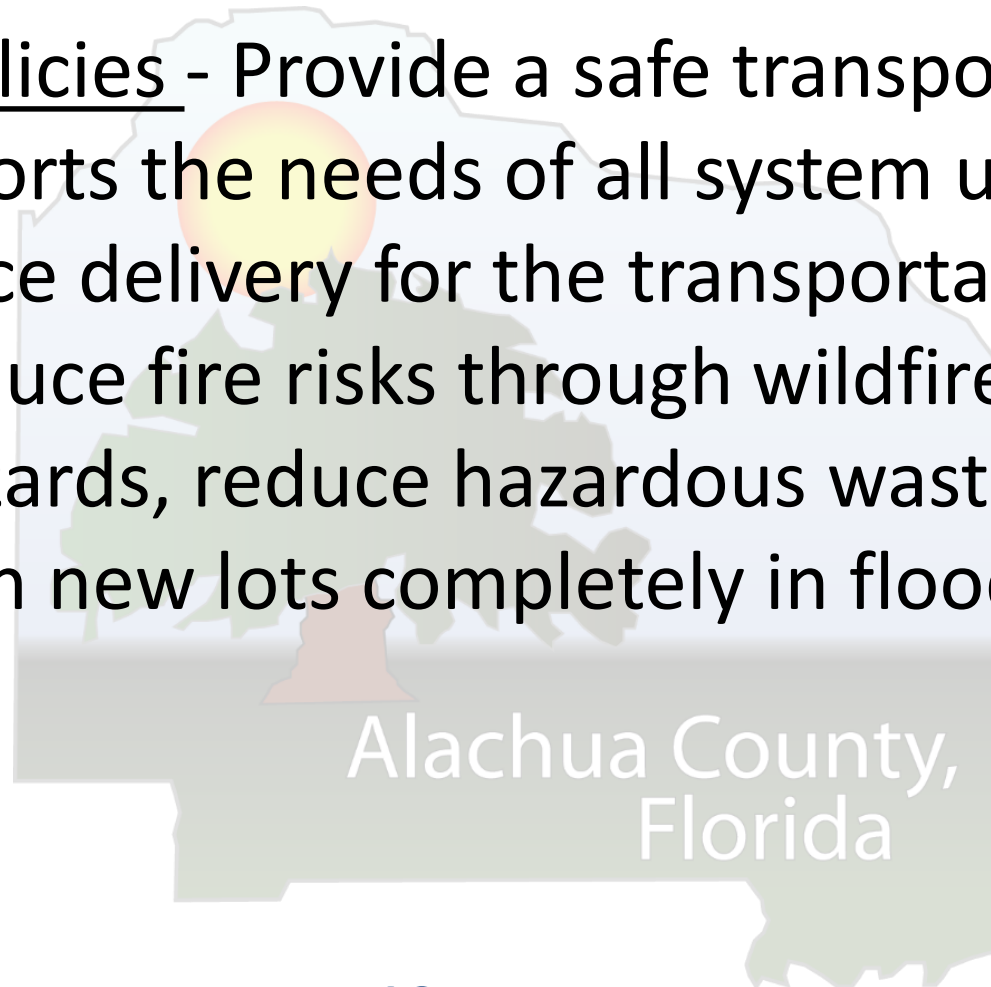


Energy and Fuel

- What are we currently updating – Updating long-term goals and targets, promoting renewable practices and technology with new Eco-Industrial Park; updating local climate mitigation strategies
- What more can we do? - Increase public access to energy efficient products; increase access to distributed renewables, identify through CIP program

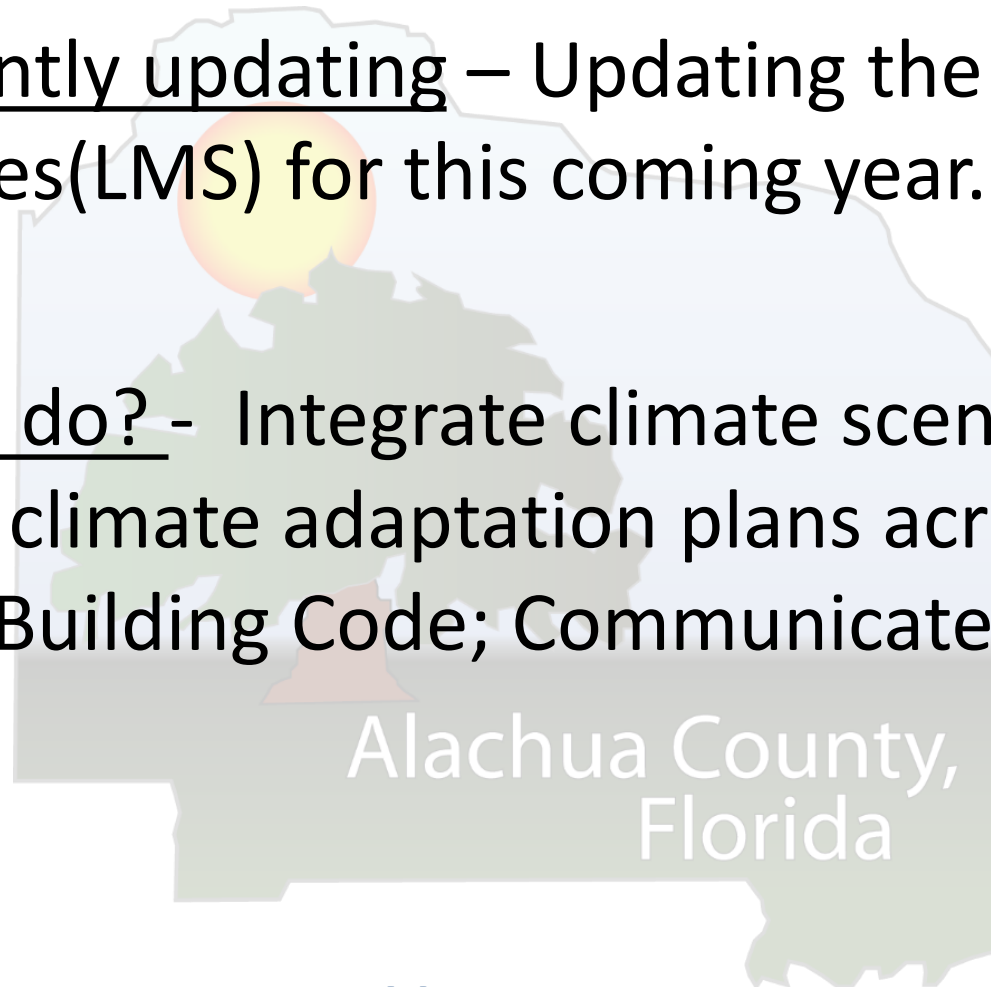
Risk Reduction and Emergency Management

- Alachua County Policies - Provide a safe transportation network that supports the needs of all system users, assist planning and service delivery for the transportation disadvantaged, reduce fire risks through wildfire mitigation and reduce wildfire hazards, reduce hazardous waste production, prevent creation on new lots completely in floodplains



Risk Reduction and Emergency Management

- What are we currently updating – Updating the Local Mitigation Strategies(LMS) for this coming year.
- What more can we do? - Integrate climate scenarios into planning; promote climate adaptation plans across sectors; review the Florida Building Code; Communicate risk to all residents



Natural Systems

- Alachua County Policies - Protect natural areas and wetlands and monitor health of natural resources, including strategic ecosystems, listed species habitat and significant habitat, significant geologic features, floodplains, strong wetland avoidance and buffer standards, protect productive native soils, promote pollinator health and habitat, protect urban tree canopy, Alachua County Forever conservation lands program and Greenways Master Plan

Natural Systems

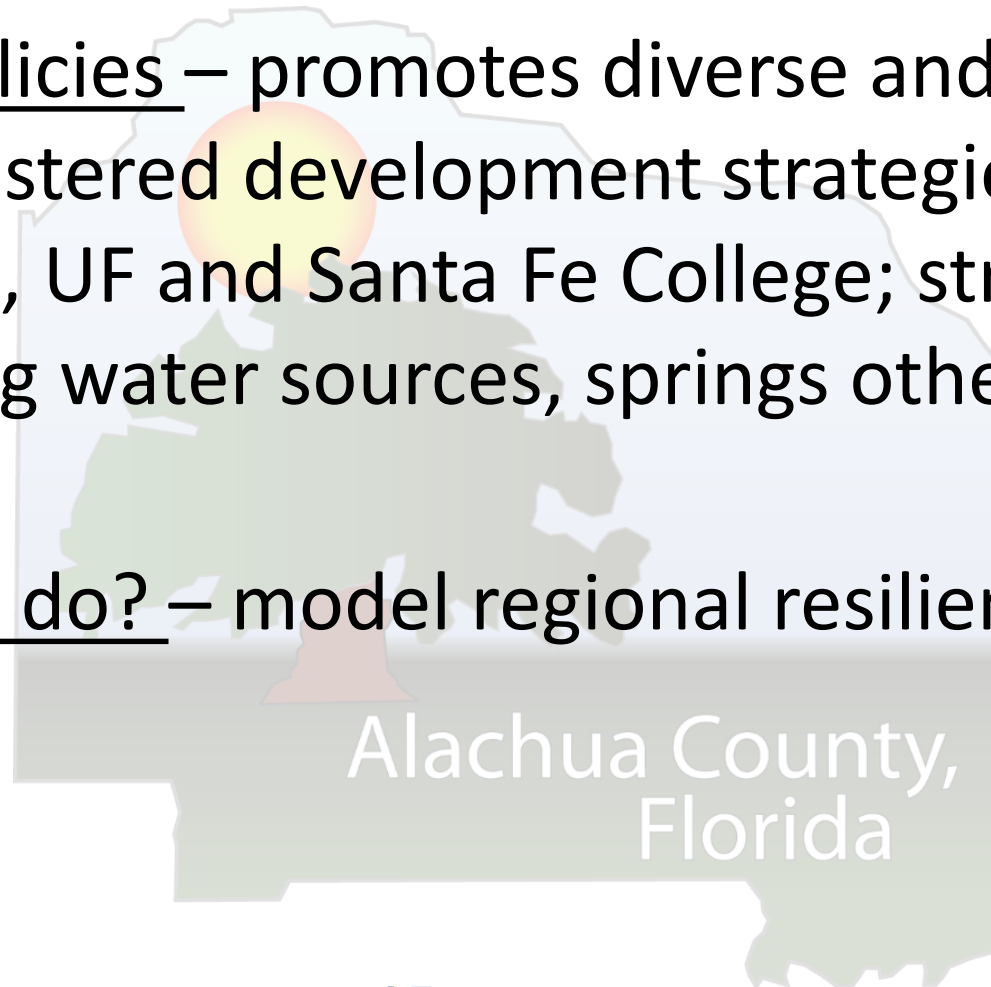
- What are we currently updating – Increasing wetland protection buffers for Outstanding Florida Waters. Updating tree protection and open space standards and the Greenway Master Plan. Continuing to purchase and manage conservation lands. Updating native soil protection, stormwater standards, and climate resilient landscaping strategies.
- What more can we do? - Examine and propose revisions to environmental regulations to account for the effects of climate change. Define environmental resiliency. Have future referendums to fund acquisition and management of conservation lands

Public Health

- Alachua County Policies - Support programs to reduce poverty and its effects, increase equitable access to affordable dental and health services, and reduce the prevalence and incidence of substance abuse and strive for a drug-free community
- What more can we do? – Promote strategies to reduce extreme heat exposure; support data collection; increase health data monitoring; assess climate impacts on chronic conditions and changing diseases

Regional Economic Resilience

- Alachua County Policies – promotes diverse and sustainable economic base, clustered development strategies; coordinate with municipalities, UF and Santa Fe College; strive for equity, protect our drinking water sources, springs other natural resources.
- What more can we do? – model regional resilience



Social Equity

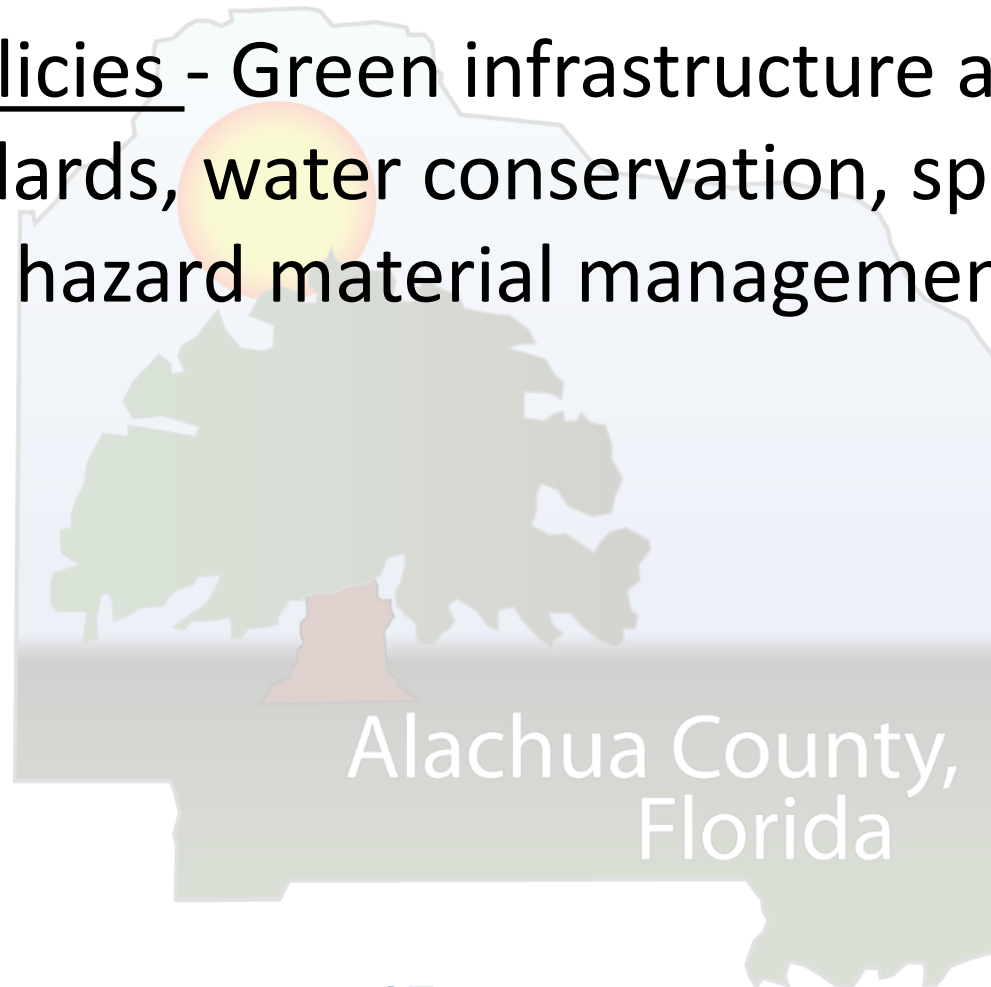
- Alachua County Policies - Sustainable building techniques with affordable housing with programs to reduce poverty and its effects, address economic and racial disparities
- What more can we do? - Support equitable public infrastructure; engage leaders in high-vulnerability populations; train government staff on equity



Alachua County,
Florida

Water and Stormwater

- Alachua County Policies - Green infrastructure and LID, higher water quality standards, water conservation, springs and aquifer protection, hazard material management, watershed planning.



Water and Stormwater

- What are we currently updating – Through the Comp Plan and code updates, we are updating green infrastructure and LID requirements, water quality standards, landscaping standards, water conservation, springs and aquifer protection, and watershed planning.
- What more can we do? - Expand partnerships and resources for innovation; advance capital projects; coordinate innovation and funding; recognize adaptable infrastructure

Coordination

- Alachua County Policies - Track resources and coordinate with advisory groups, stakeholders, federal, regional, state, and local agencies and governments, regional planning council
- What more can we do? - Support resilient strategies in jurisdictions, track regional indicators, and create climate advisory group; join other climate initiatives and partnerships; Plan for potential impact on Social, Medical, and Public Safety Services related to influx of population from Florida coastal retreat and other climate refugees
-

Public Policy Advocacy

- Alachua County Policies – Advance social and economic equity, promote coordination among local health systems and entities. Partner with community groups, local educational institutions, IFAS, health care providers
- What more can we do? - Support climate-conscious government action; form coalitions; coordinate policies across jurisdictions, encourage public participation; advocate jointly on issues; prioritize climate change in water management plans; consider direct and indirect on both short-term and long-term impacts

Framework for Regional Climate Collaboration

- Currently, Alachua County, Gainesville, and University of Florida are actively engaged in climate change workshops
- North Central Florida Regional Planning Council could be a potential climate action planning partner
- Regionally, surrounding counties and smaller cities may not yet be motivated to make climate action a priority