

RESOLUTION 19 •

A RESOLUTION BY THE BOARD OF COUNTY COMMISSIONERS OF ALACHUA COUNTY, FLORIDA, ACCEPTING THE DONATION OF REAL PROPERTY; AUTHORIZING THE EXECUTION OF DOCUMENTS TO EFFECTUATE THE CONVEYANCE; AND PROVIDING AN EFFECTIVE DATE.

WHEREAS, Section 125.01, Florida Statutes, grants to counties the power to provide parks, preserves, playgrounds, recreation areas, libraries, museums, historical commissions, and other recreation and cultural facilities and programs; and

WHEREAS, Said Statute authorizes the purchase or lease and sell or exchange of real property as necessary or incident to carrying out such powers enumerated; and

WHEREAS, Smith Life Estate & Smith, is willing to donate real property it owns in Alachua County and shown on Exhibit "A", attached hereto and by reference incorporated herein (the Property), for the purpose of its use as a preserve; and

WHEREAS, the donation has been reviewed pursuant to the Alachua County Donation Policy and received a positive recommendation from the Donation Acceptance Committee.

**NOW THEREFORE, BE IT RESOLVED BY THE BOARD OF COUNTY
COMMISSIONERS OF ALACHUA COUNTY, FLORIDA;**

1. The Board finds, determines, and declares that the recitals in the preamble are true and correct, and hereby incorporates them by reference.
2. The County Manager is authorized to effect the expenditure of funds for due diligence and associated closing costs as may be necessary to examine the title and physical condition of the Property.
3. That the Board authorizes the acceptance of a deed of gift to the Property at the discretion of the County Manager after review of the due diligence reports.
4. That the Chair is authorized to execute any documents, approved by the County Attorney, needed to complete this conveyance.
5. This resolution shall take effect immediately upon its adoption.

DULY ADOPTED in regular session, this _____ day of _____, 2019

**BOARD OF COUNTY
COMMISSIONERS OF ALACHUA
COUNTY, FLORIDA**

By: _____
Robert Hutchinson, Chair

ATTEST:

J.K. "Jess" Irby, Esq.
Clerk of Court

(SEAL)

APPROVED AS TO FORM

Sylvia Torres
Alachua County Attorney

Exhibit "A"

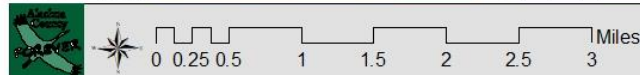
Lochloosa Forest Connector - Smith & Smith Location

Map 1



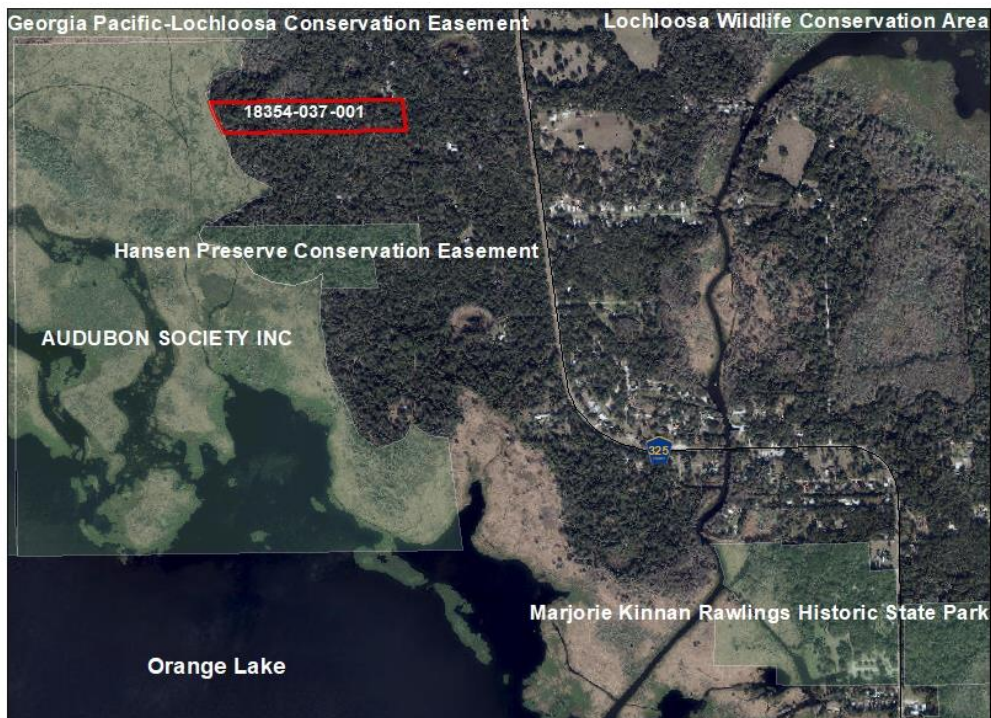
Legend

- Smith Parcel (~14.52 ac)
- Conservation Lands
- Active Acquisition List
- ACF Projects



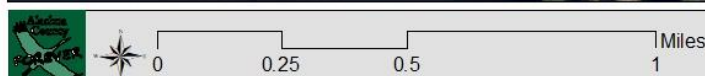
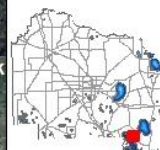
DISCLAIMER: This map and the spatial data it contains are made available as a public service, to be used for reference purposes only. The Alachua County Environmental Protection Department provides this information AS IS without warranty of any kind. The quality of the data is dependent on the various sources from which each data layer is obtained.

Lochloosa Forest Connector - Smith & Smith



Legend

- Smith Parcel (~14.52 ac)
- Conservation Lands



DISCLAIMER: This map and the spatial data it contains are made available as a public service, to be used for reference purposes only. The Alachua County Environmental Protection Department provides this information AS IS without warranty of any kind. The quality of the data is dependent on the various sources from which each data layer is obtained.