

Potential Economic Impacts of the Alachua County Resource Recovery Park

Sponsored Project Report to Alachua County

Christa D. Court, PhD, Assistant Scientist

Alan W. Hodges, PhD, Extension Scientist

University of Florida-IFAS, Food and Resource Economics Department
Gainesville, Florida

February 16, 2018



Photo credit: Alachua County

UF | IFAS
UNIVERSITY of FLORIDA

**ECONOMIC IMPACT
ANALYSIS PROGRAM**

Introduction

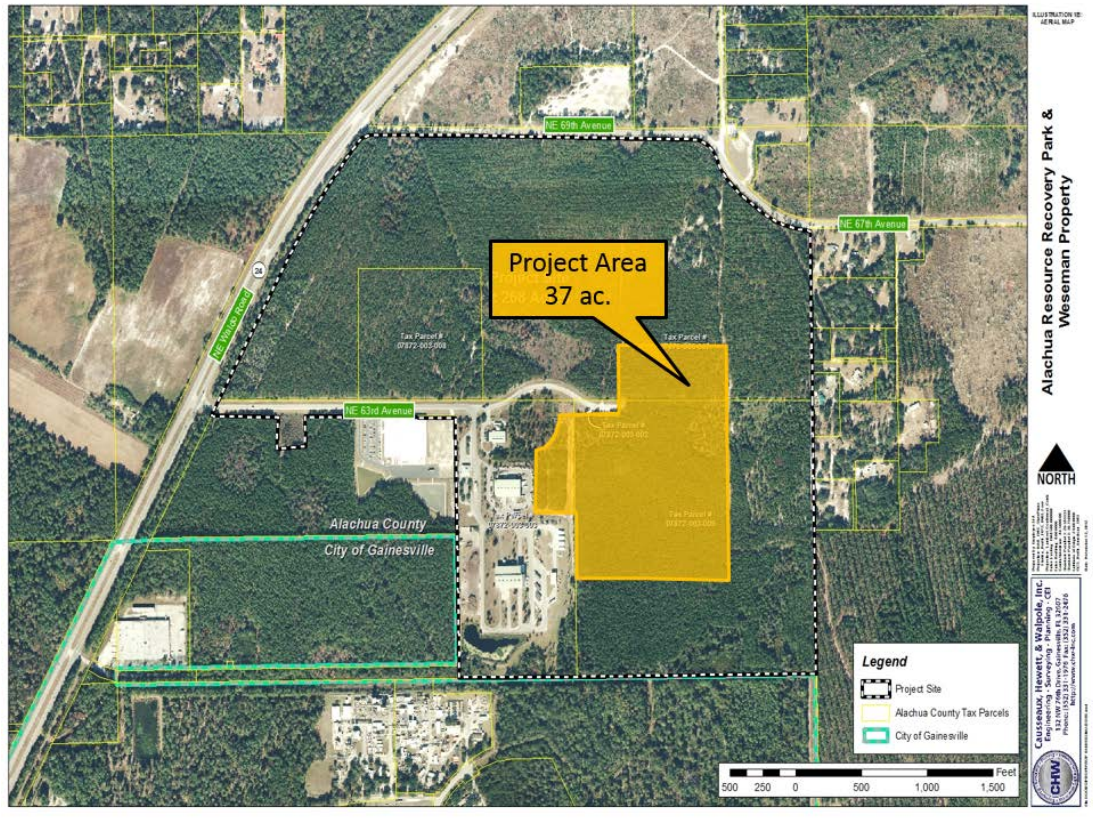
The county government of Alachua County, Florida seeks to develop a resource recovery park that provides space for industries that process and/or utilize recovered materials from the waste stream. The Alachua County Resource Recovery Park (hereafter, the RRP) will be located on an approximately 37-acre property site in Northeast Gainesville near State Road 24 (Waldo Road) and the Gainesville Regional Airport. This site is conveniently located adjacent to the Leveda Brown Environmental Park and Transfer Station, which serves as a collection and transfer site for garbage, recycling, scrap metal, tires, yard waste, and hazardous waste for Alachua County. Figure 1 displays the location of the RRP project area.

The RRP will feature a 15,000 square foot materials storage facility, a 20,500 square foot business incubator facility serving waste-based industries, and basic infrastructure and amenities on several parcels for private waste-based industries interested in long term leasing options. Features of these parcels include road access, parking, hookups for utilities and fiber optic data, and storm water drainage. The project area will also include a nature park and wetland mitigation area as well as property reserved for future development. Figure 2 shows the planned site layout for the RRP project area.

The Alachua County Office of Solid Waste and Resource Recovery has identified several target commodities for use by the waste-based industries that will ultimately reside within the RRP. These target commodities include tires, glass, plastics, textiles, paper and fiber products, carpet, mattresses, scrap metals, recovered building materials, and electronic waste. Prospective tenants include both processors that collect, store, recover, and resell target materials as well as manufacturers of new recycled-product goods using recovered materials. Potential tenants are expected to cover a range of sizes up to large operations such as recycled paper manufacturing as well as independent artisans creating artworks from recovered materials within the incubator space.

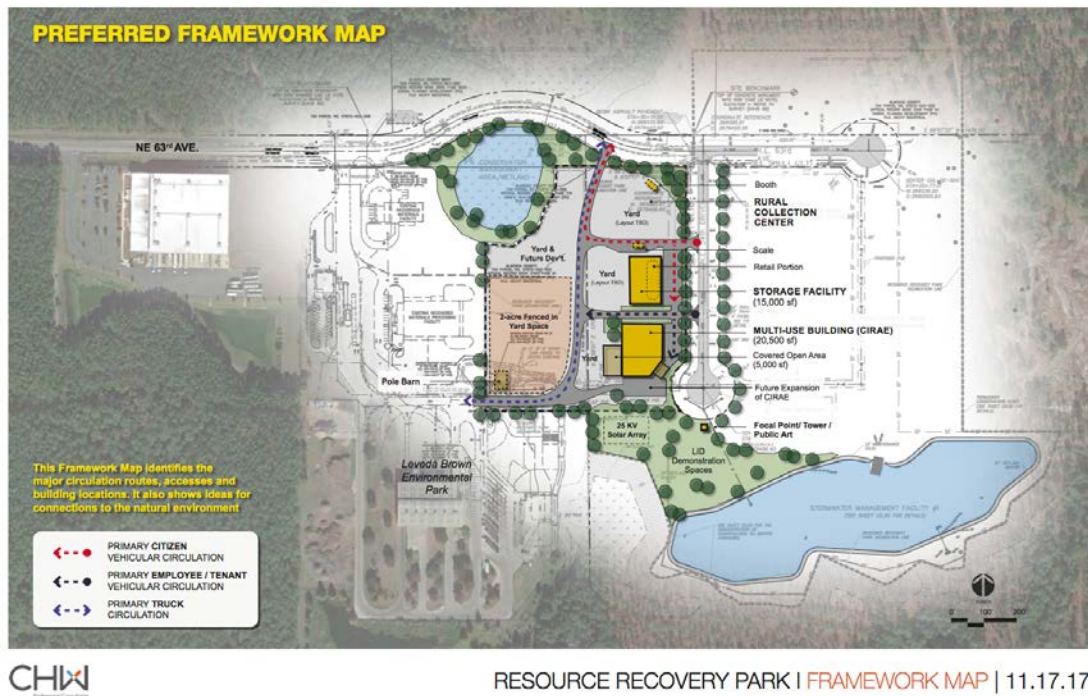
Development of the RRP has been in planning stages for many years, and is part of a broad economic development effort for the eastern side of Gainesville and Alachua County. The County plans to break ground on site infrastructure development in June of 2018, then shovel-ready sites will be available for build out by prospective tenants in June of 2019. The RRP has the potential to reduce waste by diverting materials that might otherwise go to a landfill and also to generate economic impacts, such as job and income creation and expansion of the local tax base, through development and operations. This analysis was sponsored by the Alachua County Manager's Office to evaluate the potential economic impacts of the RRP.

Figure 1. Project area for the Alachua County Resource Recovery Park in Alachua County, Florida



Source: CHW Professional Consultants

Figure 2. Site layout for the Alachua County Resource Recovery Park in Alachua County, Florida



RESOURCE RECOVERY PARK | FRAMEWORK MAP | 11.17.17

Source: CHW Professional Consultants

Methods

Potential economic impacts of the RRP were estimated using data from Alachua County on site development expenditures, estimated expenditures on construction and equipment buildouts as well as operation and maintenance for a wide range of potential tenants, and a regional economic model for the State of Florida. Appendix A contains a glossary of economic terms used throughout this report.

Site Development Expenditures

The county government plans to perform site preparation and to develop the basic infrastructure to provide shovel-ready sites for potential tenants interested in long-term leasing. To date, site development expenditures have been incurred or estimated for engineering services related to site planning, site preparation, and the construction of the two county-owned structures, a materials storage facility and a business incubator building. Specifically, the engineering services considered for this analysis include expenditures incurred by Alachua County for services provided by CHW Professional Consultants (CHW) through December 2017. Site preparation expenditures were estimated by CHW on June 15, 2017 (converted to 2018 dollars) and include expenditures for demolition, erosion, sediment control, stabilization, earthwork, utility infrastructure (water, sanitary sewer, electrical, communications), drainage, roadways, and landscaping. Construction expenditures for the materials storage facility and the business incubator were estimated based on the square footage for each building provided by CHW, and cost per square foot estimates from a commercial construction cost calculator available at www.buildingjournal.com¹. Accordingly, site development spending for the project is estimated at \$3.902 million. The cost of land acquisition was not included in the analysis because it represents an asset transfer rather than new final demand. There will be additional expenditures related to civil and construction engineering services that have not been incurred or estimated, and as a result, are not included in this analysis. Table 1 shows the breakdown of site development expenditures by category.

Table 1. Site development expenditures by category

Category	Total Expenditure (2018 dollars)	Data Source
Engineering Services	\$66,200	CHW Professional Consultants
Site Preparation	\$2,636,193	CHW Professional Consultants
Materials Recovery Facility and Business Incubator	\$1,199,525	CHW Professional Consultants and BuildingJournal.com Commercial Construction Cost Calculator
TOTAL	<u>\$3,901,918</u>	

¹ Cost per square foot estimates generated by www.buildingjournal.com were similar to those available in fee-based cost calculators. This tool was selected due to the ability to specify a building type as well as a geographical location within the cost calculator. The cost per square foot estimate for these two facilities represents an average cost per square foot for constructing a warehouse-style commercial building in Orlando, Jacksonville, and Tallahassee. Calculations include default values for 10% overhead costs, 5% profit, and 1% bonding.

Tenant Buildout Expenditures

A list of potential tenants was derived from information in the 2016 Recycling Economic Information (REI) Report (U.S. Environmental Protection Agency, 2016) and input from representatives of the Alachua County Manager's Office and the Office of Solid Waste and Resource Recovery. The 2016 REI report identifies existing industries that currently use recycled commodities, including iron and steel, aluminum, PET plastic, HDPE plastic, LDPE plastic, and electronics within their production processes. Those industries using target commodities and having a small enough square footage footprint to reside within the 37 acre project area were selected. The Alachua County Manager's Office and the Office of Solid Waste and Resource Recovery submitted additional potential tenants based on familiarity with target commodities and recycled content products. The final list consisted of 22 potential tenants.

The 2010 Manufacturing Energy Consumption Survey (MECS), published by the U.S. Energy Information Administration, provides data on the national average average square footage per establishment for a variety of industries, classified by North American Industrial Classification Scheme (NAICS) code. The data from MECS and the NAICS codes assigned to each potential tenant were used to estimate the square footage of each potential establishment. Construction expenditures for each establishment were calculated based on the estimated square footage for each establishment and cost per square foot estimates from www.buildingjournal.com. For processor industries that are characterized as recovery, storage, and resale activities, the cost per square foot estimate represents an average cost per square foot for constructing a warehouse-style commercial building in Orlando, Jacksonville, and Tallahassee. For manufacturing industries, the cost per square foot estimate represents an average cost per square foot for constructing either a one-story factory or a two-story factory building in the same Florida metro areas. All estimates included within these averages use the default values for 10 percent overhead costs, 5 percent profit, and 1 percent bonding.

Equipment costs for each establishment were derived from the 2015 Annual Capital Expenditure Survey (ACES), published by the U.S. Census Bureau. ACES provides national averages on the total capital expenditures as well as the capital expenditures on structures and equipment for each NAICS code. This information was used to calculate the percentages of total capital expenditures that are spent on structures and equipment for the NAICS codes associated with each potential tenant. These percentages along with estimates for building costs were used to estimate capital expenditures and equipment costs. The square footage estimates as well as the estimated capital expenditures by category for each potential tenant buildout are summarized in Table 2.

Table 2. Square footage and expenditure estimates for potential tenant build-outs

Material Used	Activity	Building Area	Building Cost	Equipment Cost	Total Capital Expenditures
		Square feet	-----2018 dollars-----		
Iron and Steel	Manufacturer of steel castings	441,355	\$28,908,753	\$123,242,576	\$152,151,329
	Iron foundries and miscellaneous users	176,103	\$13,501,230	\$57,557,875	\$71,059,105
Aluminum	Secondary aluminum smelters	193,650	\$14,685,125	\$41,796,125	\$56,481,250
	Aluminum foundries	61,714	\$5,029,691	\$21,442,367	\$26,472,058
PET Plastic	Non-cellulosic fibers	346,073	\$24,628,862	\$50,004,053	\$74,632,915
	Sheet, film, and strapping	116,973	\$9,279,858	\$37,119,432	\$46,399,290
	Food and non-food bottles	116,973	\$9,279,858	\$37,119,432	\$46,399,290
HDPE Plastic	Pipe manufacturing	116,973	\$9,279,858	\$37,119,432	\$46,399,290
	Sheet and film	116,973	\$9,279,858	\$37,119,432	\$46,399,290
	Lawn and garden products	116,973	\$9,279,858	\$37,119,432	\$46,399,290
	Other plastic products manufacturing	116,973	\$9,279,858	\$37,119,432	\$46,399,290
LDPE Plastic	Liquid Fuels	141,514	\$11,061,678	\$22,458,558	\$33,520,235
Electronics	Electronic computer refurbishing	96,183	\$7,678,610	\$21,854,504	\$29,533,113
	Telephone apparatus refurbishing	96,183	\$7,678,610	\$37,489,682	\$45,168,291
	Audio and video equipment refurbishing	96,183	\$7,678,610	\$37,489,682	\$45,168,291
	Broadcast and wireless communications equipment manufacturing	96,183	\$7,678,610	\$37,489,682	\$45,168,291
	Processing of Electronic Scrap and E-waste	36,860	\$1,609,553	\$30,581,513	\$32,191,067
Glass	Recycled Glass Processing	5,529	\$246,962	\$4,692,278	\$4,939,240
C&D Materials	Storage and Resale of Recovered Building Materials	36,860	\$1,609,553	\$2,048,522	\$3,658,076
Mattresses and Carpet	Mattress and Carpet Materials Recovery	55,290	\$2,414,330	\$45,872,270	\$48,286,600
Rubber	Industrial Rubber Compounds	116,973	\$9,279,858	\$37,119,432	\$46,399,290
Paper	Recycled Paper Manufacturing	540,032	\$33,031,957	\$267,258,564	\$300,290,521
Concrete	Concrete Remanufacturing	48,443	\$3,972,326	\$20,854,712	\$24,827,038
Furniture	Furniture Remanufacturing/Refurbishing	71,534	\$5,794,254	\$17,382,762	\$23,177,016
TOTAL		<u>3,238,523</u>	<u>\$232,401,140</u>	<u>\$1,061,114,275</u>	<u>\$1,293,515,412</u>

Operation and Maintenance Expenditures

Operation and maintenance expenditures and spending patterns for each potential tenant were calculated within the regional economic impact analysis software based on an estimated employment per establishment. For potential tenant industries identified within the 2016 REI report, employment values were calculated using 2016 data from the Quarterly Census of Employment and Wages (QCEW), published by the U.S. Bureau of Labor Statistics. The QCEW provides data on the number of establishments and employment levels by NAICS code.

Estimates of the average number of employees per establishment for relevant NAICS codes were calculated using information for the entire United States since a national average was assumed to best represent establishments using recycled commodities within their production processes. The direct employment estimates as well as the imputed values for industry sales, employee compensation, and compensation per employee for each potential tenant are summarized in Table 3.

Table 3. Employment estimates and imputed values for sales and employee compensation for potential tenant activities

Material Used	Activity	Direct Employment Estimate Jobs	Industry Sales (imputed) ----- 2018 dollars -----	Employee Compensation (imputed) 2018 dollars	Compensation per Employee (imputed)
Iron and Steel	Manufacturer of steel castings	78	\$24,773,978	\$5,287,162	\$67,784
	Iron foundries and miscellaneous users	78	\$24,773,978	\$5,287,162	\$67,784
Aluminum	Secondary aluminum smelters	46	\$47,119,564	\$1,943,024	\$42,240
	Aluminum foundries	41	\$8,842,204	\$1,662,988	\$40,561
PET Plastic	Non-cellulosic fibers	115	\$119,243,096	\$20,790,790	\$180,789
	Sheet, film, and strapping	54	\$24,174,158	\$3,033,475	\$56,175
	Food and non-food bottles	66	\$33,637,960	\$5,521,281	\$83,656
HDPE Plastic	Pipe manufacturing	47	\$24,924,540	\$2,583,597	\$54,970
	Other plastic products manufacturing	50	\$13,206,420	\$2,465,092	\$49,302
	Lawn and garden products	53	\$14,483,683	\$3,032,061	\$57,209
	Sheet and film	60	\$26,860,174	\$3,370,528	\$56,175
LDPE Plastic	Liquid Fuels	15	\$128,015,000	\$1,297,153	\$86,477
Electronics	Electronic computer refurbishing	64	\$61,893,348	\$4,857,150	\$75,893
	Telephone apparatus refurbishing	64	\$40,304,016	\$4,567,086	\$71,361
	Audio and video equipment refurbishing	64	\$24,191,814	\$3,751,809	\$58,622
	Broadcast and wireless communications equipment manufacturing	64	\$28,349,344	\$7,884,565	\$123,196
	Processing of Electronic Scrap and E-waste	20	\$4,114,299	\$1,204,110	\$60,206
Glass	Recycled Glass Processing	3	\$617,145	\$180,616	\$60,205
C&D Materials	Storage and Resale of Recovered Building Materials	20	\$1,918,112	\$803,342	\$40,167
Mattresses and Carpet	Mattress and Carpet Materials Recovery	30	\$6,171,448	\$1,806,164	\$60,205
Rubber	Industrial Rubber Compounds	55	\$18,328,574	\$3,460,511	\$62,918
Paper	Recycled Paper Manufacturing	120	\$103,915,000	\$11,886,261	\$99,052
Concrete	Concrete Remanufacturing	25	\$5,688,607	\$1,323,150	\$52,926
Furniture	Furniture Remanufacturing/Refurbishing	13	\$1,606,754	\$456,328	\$35,102
TOTAL		<u>1,207</u>	<u>\$779,857,855</u>	<u>\$96,675,927</u>	<u>\$80,096</u>

Regional Economic Impact Analysis

The potential economic impacts of site development expenditures, tenant buildout expenditures, and operation and maintenance expenditures were estimated with a regional economic model for the State of Florida, constructed with the IMPLAN software and 2015 data (Implan Group, LLC). This model enables estimation of regional economic impacts for a given change in final demand or direct employment in specific industry sectors, and account for economic multiplier effects arising from industry supply chain activity, known as indirect effects, and household and government re-spending of income, or induced effects (Miller and Blair, 2009).

Relevant expenditures were entered into the IMPLAN model as summarized in Tables 4 – 6, with each expenditure item assigned to the appropriate industry sector. Table 7 summarizes the relevant IMPLAN sector descriptions. Capital expenditures or direct employment values associated with operation and maintenance were entered in the model as 2018 dollars to be consistent with the project schedule. The model automatically imputes direct employment for expenditure entries, or imputes industry sales for direct employment entries based on the average employee to output ratio, along with employee and proprietor earnings for each industry sector based on regional averages.

Table 4. *IMPLAN* events for economic impact analysis of site development expenditures

Activity	IMPLAN Sector	Industry Sales 2018 dollars	Employment (imputed) Jobs	Employee Compensation (imputed) 2018 dollars	Event Year	Output Deflator	GDP Deflator	Local Purchase Percentage
Site Preparation	58	\$1,997,453.00	14	\$537,295.35	2018	1.029	1.019	100.00%
	56	\$603,917.00	3	\$134,881.02	2018	1.029	1.019	100.00%
	469	\$34,823.00	1	\$14,208.49	2018	1.02	1.019	99.77%
Materials Storage Facility and Incubator	57	\$1,199,525.00	9	\$380,192.44	2018	1.029	1.019	100.00%
Engineering Services	449	\$66,200.00	< 1	\$30,098.05	2018	1.024	1.019	90.25%

Table 5. IMPLAN events for economic impact analysis of potential tenant buildout expenditures

Activity	IMPLAN Sector	Industry Sales	Employment (imputed)	Employee Compensation (imputed)	Event Year	Output Deflator	GDP Deflator	Local Purchase Percentage
		2018 dollars	Jobs	2018 dollars				
Manufacturer of steel castings	53	\$28,908,753	233	\$10,396,802	2018	1.029	1.019	100.00%
	271	\$123,242,576	461	\$28,283,642	2018	0.997	1.019	4.32%
Iron foundries and miscellaneous users	53	\$13,501,230	109	\$4,855,609	2018	1.029	1.019	100.00%
	271	\$57,557,875	215	\$13,209,285	2018	0.997	1.019	4.32%
Secondary aluminum smelters	53	\$14,685,125	118	\$5,281,388	2018	1.029	1.019	100.00%
	271	\$41,796,125	156	\$9,592,031	2018	0.997	1.019	4.32%
Aluminum foundries	53	\$5,029,691	41	\$1,808,888	2018	1.029	1.019	100.00%
	271	\$21,442,367	80	\$4,920,931	2018	0.997	1.019	4.32%
Non-cellulosic fibers	53	\$24,628,862	199	\$8,857,573	2018	1.029	1.019	100.00%
	271	\$50,004,053	187	\$11,475,715	2018	0.997	1.019	4.32%
Sheet, film, and strapping	53	\$9,279,858	75	\$3,337,427	2018	1.029	1.019	100.00%
	271	\$37,119,432	139	\$8,518,750	2018	0.997	1.019	4.32%
Food and non- food bottles	53	\$9,279,858	75	\$3,337,427	2018	1.029	1.019	100.00%
	271	\$37,119,432	139	\$8,518,750	2018	0.997	1.019	4.32%
Pipe manufacturing	53	\$9,279,858	75	\$3,337,427	2018	1.029	1.019	100.00%
	271	\$37,119,432	139	\$8,518,750	2018	0.997	1.019	4.32%
Automotive products	53	\$9,279,858	75	\$3,337,427	2018	1.029	1.019	100.00%
	271	\$37,119,432	139	\$8,518,750	2018	0.997	1.019	4.32%
Lawn and garden products	53	\$9,279,858	75	\$3,337,427	2018	1.029	1.019	100.00%
	271	\$37,119,432	139	\$8,518,750	2018	0.997	1.019	4.32%
Sheet and film	53	\$9,279,858	75	\$3,337,427	2018	1.029	1.019	100.00%
	271	\$37,119,432	139	\$8,518,750	2018	0.997	1.019	4.32%
Composite lumber	53	\$9,279,858	75	\$3,337,427	2018	1.029	1.019	100.00%
	271	\$37,119,432	139	\$8,518,750	2018	0.997	1.019	4.32%
Pallets, crates, and buckets	53	\$9,279,858	75	\$3,337,427	2018	1.029	1.019	100.00%
	271	\$37,119,432	139	\$8,518,750	2018	0.997	1.019	4.32%
Composite lumber	53	\$9,279,858	75	\$3,337,427	2018	1.029	1.019	100.00%
	271	\$37,119,432	139	\$8,518,750	2018	0.997	1.019	4.32%
Liquid Fuels	53	\$11,061,678	89	\$3,978,244	2018	1.029	1.019	100.00%
	271	\$22,458,558	84	\$5,154,143	2018	0.997	1.019	4.32%

Activity	IMPLAN Sector	Industry Sales	Employment (imputed)	Employee Compensation (imputed)	Event Year	Output Deflator	GDP Deflator	Local Purchase Percentage
		2018 dollars	Jobs	2018 dollars				
Electronic Computer Manufacturing	53	\$7,678,610	62	\$2,761,551	2018	1.029	1.019	100.00%
	271	\$21,854,504	82	\$5,015,515	2018	0.997	1.019	4.32%
Telephone Apparatus Manufacturing	53	\$7,678,610	62	\$2,761,551	2018	1.029	1.019	100.00%
	271	\$37,489,682	140	\$8,603,721	2018	0.997	1.019	4.32%
Audio and Video Equipment Manufacturing	53	\$7,678,610	62	\$2,761,551	2018	1.029	1.019	100.00%
	271	\$37,489,682	140	\$8,603,721	2018	0.997	1.019	4.32%
Broadcast and Wireless Communications Equipment Manufacturing	53	\$7,678,610	62	\$2,761,551	2018	1.029	1.019	100.00%
	271	\$37,489,682	140	\$8,603,721	2018	0.997	1.019	4.32%
Recycled Glass Processing	57	\$246,962	2	\$78,275	2018	1.029	1.019	100.00%
	271	\$4,692,278	18	\$1,076,858	2018	0.997	1.019	4.32%
Storage and Resale of Recovered Building Materials	57	\$1,609,553	12	\$510,152	2018	1.029	1.019	100.00%
	271	\$2,048,522	8	\$470,127	2018	0.997	1.019	4.32%
Processing of Electronic Scrap and E-waste	57	\$1,609,553	12	\$510,152	2018	1.029	1.019	100.00%
	271	\$30,581,513	114	\$7,018,326	2018	0.997	1.019	4.32%
Mattress and Carpet Materials Recovery	57	\$2,414,330	18	\$765,228	2018	1.029	1.019	100.00%
	271	\$45,872,270	172	\$10,527,489	2018	0.997	1.019	4.32%
Industrial Rubber Compounds	53	\$9,279,858	75	\$3,337,427	2018	1.029	1.019	100.00%
	271	\$37,119,432	139	\$8,518,750	2018	0.997	1.019	4.32%
Recycled Paper Manufacturing	53	\$33,031,957	266	\$11,879,679	2018	1.029	1.019	100.00%
	271	\$267,258,564	999	\$61,334,692	2018	0.997	1.019	4.32%
Concrete Remanufacturing	53	\$3,972,326	34	\$1,365,489.13	2018	1.029	1.019	100.00%
	271	\$20,854,712	76	\$5,359,024.57	2018	0.997	1.019	4.32%
Furniture Remanufacturing/ Refurbishing	53	\$5,794,254	49	\$1,991,777.82	2018	1.029	1.019	100.00%
	271	\$17,382,762	63	\$4,466,839.37	2018	0.997	1.019	4.32%

Table 6. IMPLAN events for economic impact analysis of potential tenant operation and maintenance activities

Activity	Sector	Industry Sales (imputed)	Employment	Employee Compensation (imputed)	Event Year	Output Deflator	GDP Deflator	Local Purchase Percentage
		2018 dollars	Jobs	2018 dollars				
Manufacturer of steel castings	229	\$24,773,978	78	\$5,287,162	2018	1.025	1.019	100%
Iron foundries and miscellaneous users	229	\$24,773,978	78	\$5,287,162	2018	1.025	1.019	100%
Secondary aluminum smelters	222	\$47,119,564	46	\$1,943,024	2018	1.028	1.019	100%
Aluminum foundries	230	\$8,842,204	41	\$1,662,988	2018	1.025	1.019	100%
Non-cellulosic fibers	168	\$119,243,096	115	\$20,790,790	2018	1.035	1.019	100%
Sheet, film, and strapping	188	\$24,174,158	54	\$3,033,475	2018	1.02	1.019	100%
Food and non-food bottles	194	\$33,637,960	66	\$5,521,281	2018	1.02	1.019	100%
Pipe manufacturing	190	\$24,924,540	47	\$2,583,597	2018	1.02	1.019	100%
Automotive products	195	\$13,206,420	50	\$2,465,092	2018	1.02	1.019	100%
Lawn and garden products	197	\$14,483,683	53	\$3,032,061	2018	1.025	1.019	100%
Sheet and film	188	\$26,860,174	60	\$3,370,528	2018	1.02	1.019	100%
Composite lumber	195	\$13,206,420	50	\$2,465,092	2018	1.02	1.019	100%
Pallets, crates, and buckets	195	\$13,206,420	50	\$2,465,092	2018	1.02	1.019	100%
Composite lumber	195	\$13,206,420	50	\$2,465,092	2018	1.02	1.019	100%
Liquid Fuels	161	\$128,015,000	15	\$1,297,153	2018	-	1.019	100%
Electronic computer manufacturing	301	\$61,893,348	64	\$4,857,150	2018	0.976	1.019	100%
Telephone apparatus manufacturing	304	\$40,304,016	64	\$4,567,086	2018	1.007	1.019	100%
Audio and video equipment manufacturing	307	\$24,191,814	64	\$3,751,809	2018	0.981	1.019	100%
Broadcast and wireless communications equipment manufacturing	305	\$28,349,344	64	\$7,884,565	2018	1.007	1.019	100%
Independent Artists	492	\$81,261	2	\$8,629	2018	1.034	1.019	100%
Recycled Glass Processing	471	\$617,145	3	\$180,616	2018	1.021	1.019	100%
Storage and Resale of Recovered Building Materials	416	\$1,918,112	20	\$803,342	2018	1.035	1.019	100%
Processing of Electronic Scrap and E-waste	471	\$4,114,299	20	\$1,204,110	2018	1.021	1.019	100%
Mattress and Carpet Materials Recovery	471	\$6,171,448	30	\$1,806,164	2018	1.021	1.019	100%
Industrial Rubber Compounds	198	\$18,328,574	55	\$3,460,511	2018	1.025	1.019	100%
Recycled Paper Manufacturing	147	\$103,915,000	120	\$11,886,261	2018	1.025	1.019	100%
Concrete Remanufacturing	209	\$5,688,607.00	25	\$1,323,150	2018	1.026	1.019	100%
Furniture Remanufacturing- Refurbishing	370	\$1,606,753.88	13	\$456,328	2018	1.018	1.019	100%

Note: All dollar values are in 2018 dollars

Table 7. IMPLAN sector descriptions

Sector Number	Sector Description	NAICS Code
53	Construction of new manufacturing structures	23*
56	Construction of new highways and streets	23*
57	Construction of new commercial structures, including farm structures	23*
58	Construction of other new nonresidential structures	23*
147	Paper Mills	322120
161	Petrochemical manufacturing	325110
168	Artificial and synthetic fibers and filaments manufacturing	325220
188	Plastics packaging materials and unlaminated film and sheet manufacturing	326112
190	Plastics pipe and pipe fitting manufacturing	326122
194	Plastics bottle manufacturing	326160
195	Other plastics product manufacturing	326199
197	Rubber and plastics hoses and belting manufacturing	326220
198	Other rubber product manufacturing	326291
209	Other concrete product manufacturing	327390
222	Secondary smelting and alloying of aluminum	331314
229	Ferrous metal foundries	331510
230	Nonferrous metal foundries	331524
271	All other industrial machinery manufacturing	333249
301	Electronic computer manufacturing	334111
304	Telephone apparatus manufacturing	334210
305	Broadcast and wireless communications equipment manufacturing	334220
307	Audio and video equipment manufacturing	334310
370	Nonupholstered wood household furniture manufacturing	337122
416	Warehousing and storage	493000
449	Architectural, engineering, and related services	541330
469	Landscape and horticultural services	561730
471	Waste management and remediation services	562920
492	Independent artists, writers, and performers	711510

Results

Total economic impacts associated with the RRP in the State of Florida are reported below. The total economic impacts in Alachua County are reported in Appendix C.

Economic Impacts of Site Development Activities

Results of the economic impact analysis for site development activities, including site preparation, construction of the materials storage facility and business incubator buildings, and engineering services, associated with the RRP are presented in Tables 8-10. Total impacts of all site development activities were estimated at 87 fulltime and part-time jobs, \$4.096 million in labor income or earnings, \$6.631 million in value added or Gross State Product (GSP), and \$12.200 million in industry output or revenues. For site preparation activities, total economic impacts are 58 jobs, \$2.743 million in labor income, \$4.481 million in GSP, and \$8.295 million in industry output. Total economic impacts associated with the construction of the materials storage facility and

the business incubator are 26 jobs, \$1.263 million in labor income, \$2.024 million in GSP, and \$3.680 million in industry output. Total economic impacts associated with engineering services completed to date are 2 jobs, \$0.089 million in labor income, \$0.126 million in GSP, and \$0.225 million in industry output (Table 8).

State and local tax impacts are presented in Table 9 and are based upon average taxation rates prevailing in the State of Florida. Total tax revenues generated for state and local governments were estimated at just under \$433,000, including sales taxes (over \$202,000) that accrue mainly to state government though Alachua County has a local sales tax so they will receive a portion of these revenues, and property taxes (over \$131,000) that accrue to County governments.

Federal tax impacts are presented in Table 10. Total federal tax revenues generated were \$1.040 million, including Social Insurance (Social Security) employee and employer payroll tax contributions (nearly \$463,000) and personal income and corporate profits taxes (over \$528,000).

Table 8. Total Economic Impacts of Site Development Activities

Activity	Impact Type	Employment	Labor Income	Gross State Product	Industry Output
		Jobs	----- 2018 dollars -----		
Site Preparation	Direct Effect	18.2	\$801,075	\$1,238,073	\$2,636,111
	Indirect Effect	6.4	\$354,439	\$583,868	\$1,125,123
	Induced Effect	33.0	\$1,587,771	\$2,658,858	\$4,533,635
	<u>Total Effect</u>	<u>57.6</u>	<u>\$2,743,285</u>	<u>\$4,480,799</u>	<u>\$8,294,869</u>
Materials Storage Facility and Incubator	Direct Effect	9.2	\$412,692	\$606,819	\$1,199,525
	Indirect Effect	2.3	\$131,259	\$211,863	\$425,246
	Induced Effect	15.0	\$719,232	\$1,205,129	\$2,054,822
	<u>Total Effect</u>	<u>26.4</u>	<u>\$1,263,184</u>	<u>\$2,023,812</u>	<u>\$3,679,593</u>
Engineering Services	Direct Effect	0.4	\$29,302	\$29,608	\$59,748
	Indirect Effect	0.3	\$14,186	\$19,800	\$34,445
	Induced Effect	1.0	\$45,627	\$76,808	\$131,060
	<u>Total Effect</u>	<u>1.6</u>	<u>\$89,114</u>	<u>\$126,215</u>	<u>\$225,253</u>
TOTAL	Direct Effect	27.8	\$1,243,069	\$1,874,500	\$3,895,384
	Indirect Effect	9.0	\$499,884	\$815,531	\$1,584,814
	Induced Effect	49.0	\$2,352,630	\$3,940,795	\$6,719,517
	<u>Total Effect</u>	<u>85.6</u>	<u>\$4,095,583</u>	<u>\$6,630,826</u>	<u>\$12,199,715</u>

Table 9. State and Local Tax Impacts of Site Development Activities (2018 dollars)

Description	Site Preparation	Materials Storage Facility and Incubator	Engineering Services	TOTAL
Dividends	\$1,276	\$555	\$26	\$1,857
Social Ins Tax- Employee Contribution	\$1,001	\$472	\$33	\$1,506
Social Ins Tax- Employer Contribution	\$2,023	\$953	\$67	\$3,043
Tax on Production and Imports: Sales Tax	\$136,882	\$61,830	\$3,624	\$202,336
Tax on Production and Imports: Property Tax	\$88,934	\$40,172	\$2,354	\$131,460
Tax on Production and Imports: Motor Vehicle Lic	\$2,111	\$953	\$56	\$3,120
Tax on Production and Imports: Severance Tax	\$153	\$69	\$4	\$226
Tax on Production and Imports: Other Taxes	\$19,995	\$9,032	\$529	\$29,556
Tax on Production and Imports: S/L NonTaxes	\$8,568	\$3,870	\$227	\$12,665
Corporate Profits Tax	\$10,828	\$4,710	\$220	\$15,758
Personal Tax: Income Tax	\$0	\$0	\$0	\$0
Personal Tax: NonTaxes (Fines- Fees	\$17,292	\$7,947	\$561	\$25,800
Personal Tax: Motor Vehicle License	\$2,549	\$1,171	\$83	\$3,803
Personal Tax: Property Taxes	\$1,053	\$484	\$34	\$1,571
Personal Tax: Other Tax (Fish/Hunt)	\$191	\$88	\$6	\$285
Total State and Local Tax Impacts	<u>\$292,857</u>	<u>\$132,307</u>	<u>\$7,824</u>	<u>\$432,988</u>

Table 10. Federal Tax Impacts of Site Development Activities (2018 dollars)

Description	Site Preparation	Materials Storage Facility and Incubator	Engineering Services	TOTAL
Social Ins Tax- Employee Contribution	\$162,679	\$75,411	\$5,313	\$243,403
Social Ins Tax- Employer Contribution	\$145,928	\$68,778	\$4,832	\$219,538
Tax on Production and Imports: Excise Taxes	\$22,827	\$10,311	\$604	\$33,742
Tax on Production and Imports: Custom Duty	\$8,594	\$3,882	\$228	\$12,704
Tax on Production and Imports: Fed NonTaxes	\$1,395	\$630	\$37	\$2,062
Corporate Profits Tax	\$101,000	\$43,933	\$2,053	\$146,986
Personal Tax: Income Tax	\$255,650	\$117,495	\$8,292	\$381,437
Total Federal Tax Impacts	<u>\$698,074</u>	<u>\$320,440</u>	<u>\$21,360</u>	<u>\$1,039,874</u>

Economic Impacts Associated with Potential Tenant Activities

The building structures alone for the 22 potential tenants considered would cover over 85 acres. To provide a range of economic impacts for different groupings of tenants that might fit within the RRP area, potential tenants were ranked in terms of total employment impacts associated with their operation and maintenance activities, and low and high scenarios were developed.

- **Low Scenario:** potential tenants were selected from the bottom of the ranked list until 25 of the 37 acres of space was developed, allowing for space for setbacks, parking lots, etc. The Low Scenario includes the following tenants:

- Mattress and carpet manufacturing
 - Processing of Electronic Scrap and E-waste
 - Storage and Resale of Recovered Building Materials
 - Recycled glass processing
 - Concrete remanufacturing
 - Furniture remanufacturing/ refurbishing
 - Sheet and Film Manufacturing (PET)
 - Industrial Rubber Product Manufacturing
 - Sheet, Film, and Strapping Manufacturing (HDPE)
 - Pipe Manufacturing
 - Lawn and Garden Product Manufacturing
 - Other Plastic Product Manufacturing
 - Aluminum Foundries
- **High Scenario:** potential tenants were selected from the top of the ranked list until 25 of the 37 acres of space was developed, allowing for space for setbacks, parking lots, etc. The High Scenario includes the following tenants:
 - Recycled paper manufacturing
 - Non-cellulosic fiber manufacturing
 - Secondary aluminum smelters

Results of the economic impact analysis for tenant buildout activities are presented in Tables 11-13. Total impacts of tenant buildout activities for the Low Scenario were estimated at 1,943 fulltime and part-time jobs, \$95.803 million in labor income or earnings, \$150.638 million in Gross State Product (GSP) impacts, and \$273.877 million in industry output or revenues. Total economic impacts associated with the High Scenario are 1,850 jobs, \$91.305 million in labor income, \$143.423 million in GSP, and \$260.512 million in industry output (Table 11).

State and local tax impacts of tenant buildout activities are presented in Table 12. Total tax revenues generated for state and local governments were estimated at \$9.353 million in the Low Scenario and \$8.863 million in the High Scenario. Federal tax impacts of the tenant buildout scenarios are presented in Table 13. Total tax revenues generated for the federal government were estimated at \$24.097 million in the Low Scenario and \$22.957 million in the High Scenario.

Results of the economic impact analysis for tenant operation and maintenance activities are presented in Tables 14-16. Total impacts of tenant operation and maintenance activities for the Low Scenario were estimated at 2,069 fulltime and part-time jobs, \$105.209 million in labor income or earnings, \$176.677 million in GSP impacts, and \$380.856 million in industry output or revenues. Total economic impacts associated with the High

Scenario are 3,337 jobs, \$192.279 million in labor income, \$320.430 million in GSP, and \$722.683 million in industry output (Table 14).

State and local tax impacts of tenant operation and maintenance activities are presented in Table 15. Total tax revenues generated for state and local governments were estimated at \$11.913 million in the Low Scenario and \$24.562 million in the High Scenario. Federal tax impacts of the tenant buildout scenarios are presented in Table 16. Total tax revenues generated for the federal government were estimated at \$27.377 million in the Low Scenario and \$49.919 million in the High Scenario.

The scale and scope of operations are the primary drivers in the differences in economic impacts between the Low Scenario and the High Scenario. There are fewer tenants in the High Scenario due to the larger building area footprint of each tenant, especially the recycled paper manufacturer, which corresponds to higher direct and total economic impacts in all categories for tenant buildout activities. However, the Low Scenario results in slightly higher multiplier effects across all categories. The Low Scenario contains only processors (tenants that primarily collect, store, recover, and resell diverted waste materials), whereas the High Scenario contains only manufacturers involved in creating recycled-content goods using recovered materials.

Although these results provide a range of potential economic impacts associated with tenant buildout and operation and maintenance activities, there are many potential combinations of tenants that can be derived by ranking on other economic variables besides total employment impacts. Although job creation is an important factor for economic development projects, county planners should also consider a range of other economic factors when choosing potential tenants to target for an ideal mix of tenant businesses. These factors include scale of operations, labor intensity, compensation per employee, the magnitude of employment, value added, or income multiplier effects, the potential for horizontal integration with other tenants, etc. Table 17 summarizes the total economic impacts for operation and maintenance activities for each potential tenant. Complete tenant-specific results are provided in Appendix B. These results provide the necessary information for county planners to use for targeting the appropriate tenants after determining the economic development goals of the RRP. Also, there might be other non-economic factors to consider. In addition to the waste diversion potential for each tenant, other environmental factors for each tenant might be of interest to county planners such as air or water emissions, solid or hazardous waste generation, water consumption, energy consumption, etc.

Table 11. Total Economic Impacts of Tenant Buildout Activities

Activity	Impact Type	Employment	Labor Income	Gross State Product	Industry Output
		Jobs	----- 2018 dollars -----		
Low Scenario	Direct Effect	672.2	33,033,281	45,802,777	92,186,528
	Indirect Effect	155.2	9,221,169	14,979,415	28,353,634
	Induced Effect	1,115.3	53,548,109	89,856,183	153,336,683
	<u>Total Effect</u>	1,942.7	95,802,559	150,638,374	273,876,851
High Scenario	Direct Effect	641.2	\$31,630,096	\$43,727,878	\$87,851,154
	Indirect Effect	146.1	\$8,696,016	\$14,140,590	\$26,653,632
	Induced Effect	1,062.1	\$50,979,092	\$85,554,895	\$146,007,523
	<u>Total Effect</u>	1,849.5	\$91,305,205	\$143,423,362	\$260,512,311

Table 12. State and Local Tax Impacts of Tenant Buildout Activities (2018 dollars)

Description	Low Scenario	High Scenario
Dividends	\$40,240	\$38,272
Social Ins Tax- Employee Contribution	\$35,939	\$34,270
Social Ins Tax- Employer Contribution	\$72,617	\$69,244
Tax on Production and Imports: Sales Tax	\$4,335,271	\$4,104,951
Tax on Production and Imports: Property Tax	\$2,816,692	\$2,667,047
Tax on Production and Imports: Motor Vehicle Lic	\$66,849	\$63,302
Tax on Production and Imports: Severance Tax	\$4,864	\$4,602
Tax on Production and Imports: Other Taxes	\$633,268	\$599,624
Tax on Production and Imports: S/L NonTaxes	\$271,359	\$256,945
Corporate Profits Tax	\$341,502	\$324,819
Personal Tax: Income Tax	\$0	\$0
Personal Tax: NonTaxes (Fines- Fees	\$602,526	\$574,217
Personal Tax: Motor Vehicle License	\$88,814	\$84,642
Personal Tax: Property Taxes	\$36,680	\$34,959
Personal Tax: Other Tax (Fish/Hunt)	\$6,655	\$6,345
<u>Total State and Local Tax Impacts</u>	<u>\$9,353,280</u>	<u>\$8,863,242</u>

Table 13. Federal Tax Impacts of Tenant Buildout Activities (2018 dollars)

Description	Low Scenario	High Scenario
Social Ins Tax- Employee Contribution	\$5,726,336	\$5,458,339
Social Ins Tax- Employer Contribution	\$5,238,266	\$4,994,963
Tax on Production and Imports: Excise Taxes	\$722,970	\$684,562
Tax on Production and Imports: Custom Duty	\$272,192	\$257,731
Tax on Production and Imports: Fed NonTaxes	\$44,195	\$41,847
Corporate Profits Tax	\$3,185,287	\$3,029,702
Personal Tax: Income Tax	\$8,907,960	\$8,489,419
<u>Total Federal Tax Impacts</u>	<u>\$24,097,203</u>	<u>\$22,956,562</u>

Table 14. Total Economic Impacts of Tenant Operation and Maintenance Activities

Activity	Impact Type	Employment	Labor Income	Gross State Product	Industry Output
		Jobs	----- 2018 dollars -----		
Low Scenario	Direct Effect	471.0	25,892,515.0	45,280,137.0	150,936,115.0
	Indirect Effect	296.5	16,556,152.0	26,519,217.0	51,292,910.0
	Induced Effect	1,301.6	62,760,531.0	104,878,049.0	178,627,034.0
	<u>Total Effect</u>	<u>2,069.1</u>	<u>105,209,195.0</u>	<u>176,677,399.0</u>	<u>380,856,061.0</u>
High Scenario	Direct Effect	281.0	\$36,341,804	\$62,127,154	\$270,277,661
	Indirect Effect	606.8	\$37,267,091	\$61,007,906	\$117,731,848
	Induced Effect	2,449.5	\$118,669,945	\$197,295,412	\$334,673,096
	<u>Total Effect</u>	<u>3,337.4</u>	<u>\$192,278,841</u>	<u>\$320,430,472</u>	<u>\$722,682,605</u>

Table 15. State and Local Tax Impacts of Tenant Operation and Maintenance Activities (2018 dollars)

Description	Low Scenario	High Scenario
Dividends	\$52,545	\$91,043
Social Ins Tax- Employee Contribution	\$39,775	\$72,208
Social Ins Tax- Employer Contribution	\$80,365	\$145,895
Tax on Production and Imports: Sales Tax	\$5,593,876	\$11,736,792
Tax on Production and Imports: Property Tax	\$3,634,422	\$7,625,565
Tax on Production and Imports: Motor Vehicle Lic	\$86,260	\$180,991
Tax on Production and Imports: Severance Tax	\$6,272	\$13,161
Tax on Production and Imports: Other Taxes	\$817,115	\$1,714,433
Tax on Production and Imports: S/L NonTaxes	\$350,142	\$734,653
Corporate Profits Tax	\$445,971	\$772,704
Personal Tax: Income Tax	\$0	\$0
Personal Tax: NonTaxes (Fines- Fees	\$661,261	\$1,209,187
Personal Tax: Motor Vehicle License	\$97,473	\$178,240
Personal Tax: Property Taxes	\$40,258	\$73,617
Personal Tax: Other Tax (Fish/Hunt)	\$7,308	\$13,362
<u>Total State and Local Tax Impacts</u>	<u>\$11,913,052</u>	<u>\$24,561,850</u>

Table 16. Federal Tax Impacts of Tenant Operation and Maintenance Activities (2018 dollars)

Description	Low Scenario	High Scenario
Social Ins Tax- Employee Contribution	\$6,302,795	\$11,496,399
Social Ins Tax- Employer Contribution	\$5,797,321	\$10,524,295
Tax on Production and Imports: Excise Taxes	\$932,861	\$1,957,286
Tax on Production and Imports: Custom Duty	\$351,213	\$736,898
Tax on Production and Imports: Fed NonTaxes	\$57,025	\$119,650
Corporate Profits Tax	\$4,159,730	\$7,207,263
Personal Tax: Income Tax	\$9,776,322	\$17,877,027
<u>Total Federal Tax Impacts</u>	<u>\$27,377,268</u>	<u>\$49,918,816</u>

Table 17. Total Economic Impacts of Operation and Maintenance Activities by Tenant, rank ordered by Total Employment Impacts (2018 dollars)

Activity	Employment	Labor Income	Gross State Product	Industry Output (Revenues)
	Jobs	----- 2018 dollars	----- 2018 dollars	----- 2018 dollars
Recycled Paper Manufacturing	1,356.3	\$74,749,981	\$130,156,241	\$286,625,212
Non-cellulosic fibers	1,248.6	\$80,268,037	\$127,887,892	\$287,163,407
Secondary aluminum smelters	732.5	\$37,260,823	\$62,386,339	\$148,893,986
Electronic computer manufacturing	596.0	\$32,543,283	\$60,334,020	\$142,224,555
Telephone apparatus manufacturing	496.9	\$26,907,054	\$47,528,001	\$104,633,828
Manufacturer of steel castings	451.4	\$24,026,900	\$38,979,143	\$78,100,988
Iron foundries and miscellaneous users	451.4	\$24,026,900	\$38,979,143	\$78,100,988
Broadcast and wireless communications equipment manufacturing	425.2	\$25,782,692	\$42,570,995	\$79,509,719
Food and non-food bottles	382.1	\$21,237,800	\$38,407,279	\$80,009,502
Liquid Fuels	379.4	\$20,669,163	\$42,011,624	\$184,358,223
Audio and video equipment manufacturing	321.3	\$16,907,580	\$28,826,764	\$62,202,136
Sheet and film	288.0	\$14,817,802	\$25,630,414	\$60,301,358
Industrial Rubber Compounds	268.2	\$14,075,007	\$23,504,309	\$48,696,318
Sheet, film, and strapping	259.2	\$13,336,023	\$23,067,374	\$54,271,225
Pipe manufacturing	253.7	\$12,915,110	\$24,237,164	\$54,952,261
Lawn and garden products	225.2	\$11,673,898	\$19,143,390	\$39,144,891
Automotive products	184.1	\$9,190,898	\$14,468,119	\$32,674,947
Composite lumber	184.1	\$9,190,898	\$14,468,119	\$32,674,947
Pallets, crates, and buckets	184.1	\$9,190,898	\$14,468,119	\$32,674,947
Composite lumber	184.1	\$9,190,898	\$14,468,119	\$32,674,947
Aluminum foundries	144.7	\$6,824,907	\$10,791,358	\$23,680,124
Mattress and Carpet Materials Recovery	134.8	\$7,011,078	\$11,291,939	\$20,774,754
Concrete Remanufacturing	114.6	\$5,770,482	\$9,367,225	\$18,446,604
Processing of Electronic Scrap and E-waste	89.9	\$4,674,052	\$7,527,959	\$13,849,836
Storage and Resale of Recovered Building Materials	57.8	\$2,598,067	\$4,069,518	\$7,132,628
Furniture Remanufacturing	35.4	\$1,620,763	\$2,449,437	\$4,853,640
Recycled Glass Processing	13.5	\$701,108	\$1,129,193	\$2,077,475

Literature and Information Sources Cited

Implan Group, LLC. IMPLAN economic impact analysis and social accounting software and 2015 region data for the State of Florida and Alachua County. Huntersville, NC.

Miller, R.E. and P.D. Blair. *Input-Output Analysis: Foundations and Extensions*. 2nd edition. Cambridge Press, 750 pages, 2009.

U.S. Bureau of Labor Statistics. Quarterly Census of Employment and Wages, U.S. data, 2016. Available at: <https://www.bls.gov/cew/datatoc.htm>

U.S. Census Bureau. Annual Capital Expenditures Survey. 2015. Available at: <https://www.census.gov/library/publications/2017/econ/2015-aces-summary.html>

U.S. Energy Information Administration. Manufacturing Energy Consumption Survey. 2010. Available at: <https://www.eia.gov/consumption/manufacturing/data/2010/>

U.S. Environmental Protection Agency. Advancing sustainable materials management: Recycling Economic Information (REI) report methodology. 2016. Available at: <https://www.epa.gov/smm/recycling-economic-information-rei-report>

Appendix A: Glossary of Terms

Employee compensation is comprised of wages, salaries, commissions, and benefits such as health and life insurance, retirement and other forms of cash or non-cash compensation.

Employment is a measure of the number of jobs involved, including fulltime, part-time and seasonal positions. It is not a measure of fulltime equivalents (FTEs).

Final Demand represents sales to final consumers, including households, governments, and exports from the region.

Gross State Product (GSP) is a measure of total economic activity in a region, or total income generated by all goods and services. It represents the sum of total value added by all industries in that region, and is equivalent to Gross Domestic Product (GDP) for the nation.

IMPLAN is a computer-based input-output modeling system that enables users to create regional economic models and multipliers for any region consisting of one or more counties or states in the United States. The current version of the IMPLAN software, version 3, accounts for commodity production and consumption for 536 industry sectors, 10 household income levels, taxes to local/state and federal governments, capital investment, imports and exports, transfer payments, and business inventories. Regional datasets for individual counties or states are purchased separately.

Impact or **total impact** is the change in total regional economic activity (e.g. output or employment) resulting from a change in final demand, direct industry output, or direct employment, estimated based on regional economic multipliers.

Income is the money earned within the region from production and sales. Total income includes labor income such as wages, salaries, employee benefits and business proprietor income, plus other property income.

Input-Output (I-O) model and **Social Accounting Matrix (SAM)** is a representation of the transactions between industry sectors within a regional economy that captures what each sector purchases from every other sector to produce its output of goods or services. Using such a model, flows of economic activity associated with any change in spending may be traced backwards through the supply chain.

Local refers to goods and services that are sourced from within the region, which may be defined as a county, multi-county cluster, or state. Non-local refers to economic activity originating outside the region.

Multipliers capture the total effects, both direct and secondary, in a given region, generally as a ratio of the total change in economic activity in the region relative to the direct change. Multipliers are derived from an input-output model of the regional economy. Multipliers may be expressed as ratios of sales, income, or employment, or as ratios of total income or employment changes relative to direct sales. Multipliers express the degree of interdependency between sectors in a region's economy and therefore vary considerably across regions and sectors. A **sector-specific multiplier** gives the total changes to the economy associated with a unit change in output or employment in a given sector (i.e. the **direct economic effect**) being

evaluated. **Indirect effects multipliers** represent the changes in sales, income, or employment within the region in backward-linked industries supplying goods and services to businesses (e.g., increased sales in input supply firms resulting from more citrus industry sales). **Induced effects multipliers** represent the increased sales within the region from household spending of the income earned in the direct and supporting industries for housing, utilities, food, etc. An **imputed multiplier** is calculated as the ratio of the total impact divided by direct effect for any given measure (e.g. output, employment).

Other property income represents income received from investments, such as corporate dividends, royalties, property rentals, or interest on loans.

Output is the dollar value of a good or service produced or sold, and is equivalent to sales revenues plus changes in business inventories.

Producer prices are the prices paid for goods at the factory or point of production. For manufactured goods the purchaser price equals the producer price plus a retail margin, a wholesale margin, and a transportation margin. For services, the producer and purchaser prices are equivalent.

Proprietor income is income received by non-incorporated private business owners or self-employed individuals.

Purchaser prices are the prices paid by the final consumer of a good or service.

Region or **Regional Economy** is the geographic area and the economic activity it contains for which impacts are estimated. It may consist of an individual county, an aggregation of several counties, a state, or an aggregation of states. These aggregations are sometimes defined on the basis of worker commuting patterns.

Sector is an individual industry or group of industries that produce similar products or services, or have similar production processes. Sectors are classified according to the North American Industrial Classification System (NAICS).

Tax on Production and Imports are taxes paid to governments by individuals or businesses for property, excise and sales taxes, but do not include income taxes.

Value Added is a broad measure of income, representing the sum of employee compensation, proprietor income, other property income, indirect business taxes and capital consumption (depreciation), that is comparable to Gross Domestic Product. Value added is a commonly used measure of the contribution an industry makes to a regional economy because it avoids double counting of intermediate sales.

Appendix B: Tenant-Specific State of Florida Model Results

Table B1. Total Economic Impacts Associated with Manufacturer of Steel Castings Activities

Activity	Impact Type	Employment	Labor Income	Gross State Product	Industry Output
		Jobs	----- 2018 dollars -----		
Buildout	Direct Effect	253.0	\$12,401,091	\$17,195,740	\$34,230,729
	Indirect Effect	56.3	\$3,346,706	\$5,450,983	\$10,284,303
	Induced Effect	415.3	\$19,936,251	\$33,458,624	\$57,103,135
	<u>Total Effect</u>	<u>724.6</u>	<u>\$35,684,047</u>	<u>\$56,105,346</u>	<u>\$101,618,167</u>
Operation and Maintenance	Direct Effect	78.0	\$5,281,864	\$8,049,619	\$24,773,977
	Indirect Effect	63.1	\$3,692,020	\$5,950,379	\$11,014,892
	Induced Effect	310.3	\$15,053,017	\$24,979,145	\$42,312,120
	<u>Total Effect</u>	<u>451.4</u>	<u>\$24,026,900</u>	<u>\$38,979,143</u>	<u>\$78,100,988</u>

Table B2. State and Local Tax Impacts of Manufacturer of Steel Castings Activities (2018 dollars)

Description	Buildout	Operation and Maintenance
Dividends	\$15,011	\$10,647
Social Ins Tax- Employee Contribution	\$13,403	\$9,137
Social Ins Tax- Employer Contribution	\$27,081	\$18,461
Tax on Production and Imports: Sales Tax	\$1,600,185	\$1,356,072
Tax on Production and Imports: Property Tax	\$1,039,664	\$881,060
Tax on Production and Imports: Motor Vehicle Lic	\$24,676	\$20,912
Tax on Production and Imports: Severance Tax	\$1,794	\$1,521
Tax on Production and Imports: Other Taxes	\$233,744	\$198,086
Tax on Production and Imports: S/L NonTaxes	\$100,162	\$84,882
Corporate Profits Tax	\$127,403	\$90,367
Personal Tax: Income Tax	\$0	\$0
Personal Tax: NonTaxes (Fines- Fees	\$224,403	\$150,940
Personal Tax: Motor Vehicle License	\$33,078	\$22,249
Personal Tax: Property Taxes	\$13,662	\$9,189
Personal Tax: Other Tax (Fish/Hunt)	\$2,480	\$1,668
Total State and Local Tax Impacts	<u>\$3,456,748</u>	<u>\$2,855,191</u>

Table B3. Federal Tax Impacts of Manufacturer of Steel Castings Activities (2018 dollars)

Description	Buildout	Operation and Maintenance
Social Ins Tax- Employee Contribution	\$2,133,669	\$1,441,841
Social Ins Tax- Employer Contribution	\$1,953,502	\$1,331,678
Tax on Production and Imports: Excise Taxes	\$266,855	\$226,145
Tax on Production and Imports: Custom Duty	\$100,468	\$85,141
Tax on Production and Imports: Fed NonTaxes	\$16,313	\$13,824
Corporate Profits Tax	\$1,188,335	\$842,882
Personal Tax: Income Tax	\$3,317,657	\$2,231,556
Total Federal Tax Impacts	<u>\$8,976,799</u>	<u>\$6,173,068</u>

Table B4. Total Economic Impacts Associated with Iron Foundries and Miscellaneous Users Activities

Activity	Impact Type	Employment	Labor Income	Gross State Product	Industry Output
		Jobs	----- 2018 dollars -----		
Buildout	Direct Effect	118.1	\$5,791,671	\$8,030,912	\$15,986,748
	Indirect Effect	26.3	\$1,563,009	\$2,545,768	\$4,803,069
	Induced Effect	194	\$9,310,810	\$15,626,152	\$26,668,828
	<u>Total Effect</u>	<u>338.4</u>	<u>\$16,665,490</u>	<u>\$26,202,831</u>	<u>\$47,458,645</u>
Operation and Maintenance	Direct Effect	78	\$5,281,864	\$8,049,619	\$24,773,977
	Indirect Effect	63.1	\$3,692,020	\$5,950,379	\$11,014,892
	Induced Effect	310.3	\$15,053,017	\$24,979,145	\$42,312,120
	<u>Total Effect</u>	<u>451.4</u>	<u>\$24,026,900</u>	<u>\$38,979,143</u>	<u>\$78,100,988</u>

Table B5. State and Local Tax Impacts of Iron Foundries and Miscellaneous Users Activities (2018 dollars)

Description	Buildout	Operation and Maintenance
Dividends	\$7,011	\$10,647
Social Ins Tax- Employee Contribution	\$6,260	\$9,137
Social Ins Tax- Employer Contribution	\$12,647	\$18,461
Tax on Production and Imports: Sales Tax	\$747,333	\$1,356,072
Tax on Production and Imports: Property Tax	\$485,553	\$881,060
Tax on Production and Imports: Motor Vehicle Lic	\$11,524	\$20,912
Tax on Production and Imports: Severance Tax	\$838	\$1,521
Tax on Production and Imports: Other Taxes	\$109,165	\$198,086
Tax on Production and Imports: S/L NonTaxes	\$46,779	\$84,882
Corporate Profits Tax	\$59,501	\$90,367
Personal Tax: Income Tax	\$0	\$0
Personal Tax: NonTaxes (Fines- Fees	\$104,803	\$150,940
Personal Tax: Motor Vehicle License	\$15,448	\$22,249
Personal Tax: Property Taxes	\$6,381	\$9,189
Personal Tax: Other Tax (Fish/Hunt)	\$1,158	\$1,668
Total State and Local Tax Impacts	<u>\$1,614,402</u>	<u>\$2,855,191</u>

Table B6. Federal Tax Impacts of Iron Foundries and Miscellaneous Users Activities (2018 dollars)

Description	Buildout	Operation and Maintenance
Social Ins Tax- Employee Contribution	\$996,486	\$1,441,841
Social Ins Tax- Employer Contribution	\$912,342	\$1,331,678
Tax on Production and Imports: Excise Taxes	\$124,629	\$226,145
Tax on Production and Imports: Custom Duty	\$46,922	\$85,141
Tax on Production and Imports: Fed NonTaxes	\$7,619	\$13,824
Corporate Profits Tax	\$554,987	\$842,882
Personal Tax: Income Tax	\$1,549,442	\$2,231,556
Total Federal Tax Impacts	<u>\$4,192,426</u>	<u>\$6,173,068</u>

Table B7. Total Economic Impacts Associated with Secondary Aluminum Smelter Activities

Activity	Impact Type	Employment	Labor Income	Gross State Product	Industry Output
		Jobs	----- 2018 dollars -----		
Buildout	Direct Effect	125.1	\$6,054,771	\$8,449,734	\$16,490,004
	Indirect Effect	26.4	\$1,568,286	\$2,563,870	\$4,847,597
	Induced Effect	201.7	\$9,680,397	\$16,247,380	\$27,732,036
	<u>Total Effect</u>	<u>353.2</u>	<u>\$17,303,454</u>	<u>\$27,260,984</u>	<u>\$49,069,638</u>
Operation and Maintenance	Direct Effect	46.0	\$1,938,804	\$3,634,843	\$47,119,564
	Indirect Effect	152.4	\$9,164,972	\$15,776,438	\$29,460,074
	Induced Effect	534.1	\$26,157,046	\$42,975,057	\$72,314,348
	<u>Total Effect</u>	<u>732.5</u>	<u>\$37,260,823</u>	<u>\$62,386,339</u>	<u>\$148,893,986</u>

Table B8. State and Local Tax Impacts of Secondary Aluminum Smelter Activities (2018 dollars)

Description	Buildout	Operation and Maintenance
Dividends	\$7,336	\$17,415
Social Ins Tax- Employee Contribution	\$6,509	\$13,893
Social Ins Tax- Employer Contribution	\$13,152	\$28,071
Tax on Production and Imports: Sales Tax	\$771,611	\$2,534,799
Tax on Production and Imports: Property Tax	\$501,327	\$1,646,896
Tax on Production and Imports: Motor Vehicle Lic	\$11,899	\$39,089
Tax on Production and Imports: Severance Tax	\$865	\$2,842
Tax on Production and Imports: Other Taxes	\$112,712	\$370,267
Tax on Production and Imports: S/L NonTaxes	\$48,298	\$158,663
Corporate Profits Tax	\$62,259	\$147,802
Personal Tax: Income Tax	\$0	\$0
Personal Tax: NonTaxes (Fines- Fees	\$108,801	\$234,461
Personal Tax: Motor Vehicle License	\$16,038	\$34,561
Personal Tax: Property Taxes	\$6,624	\$14,274
Personal Tax: Other Tax (Fish/Hunt)	\$1,202	\$2,591
Total State and Local Tax Impacts	<u>\$1,668,633</u>	<u>\$5,245,624</u>

Table B9. Federal Tax Impacts of Secondary Aluminum Smelter Activities (2018 dollars)

Description	Buildout	Operation and Maintenance
Social Ins Tax- Employee Contribution	\$1,035,087	\$2,223,220
Social Ins Tax- Employer Contribution	\$948,700	\$2,024,933
Tax on Production and Imports: Excise Taxes	\$128,678	\$422,716
Tax on Production and Imports: Custom Duty	\$48,446	\$159,148
Tax on Production and Imports: Fed NonTaxes	\$7,866	\$25,841
Corporate Profits Tax	\$580,714	\$1,378,596
Personal Tax: Income Tax	\$1,608,554	\$3,466,349
Total Federal Tax Impacts	<u>\$4,358,044</u>	<u>\$9,700,802</u>

Table B10. Total Economic Impacts Associated with Aluminum Foundry Activities

Activity	Impact Type	Employment	Labor Income	Gross State Product	Industry Output
		Jobs	----- 2018 dollars -----		
Buildout	Direct Effect	44.0	\$2,157,604	\$2,991,802	\$5,955,635
	Indirect Effect	9.8	\$582,277	\$948,390	\$1,789,315
	Induced Effect	72.3	\$3,468,609	\$5,821,300	\$9,935,091
	<u>Total Effect</u>	<u>126.1</u>	<u>\$6,208,491</u>	<u>\$9,761,491</u>	<u>\$17,680,042</u>
Operation and Maintenance	Direct Effect	41.0	\$1,649,437	\$2,296,490	\$8,842,204
	Indirect Effect	21.8	\$1,223,365	\$1,902,104	\$3,641,120
	Induced Effect	81.9	\$3,952,105	\$6,592,765	\$11,196,800
	<u>Total Effect</u>	<u>144.7</u>	<u>\$6,824,907</u>	<u>\$10,791,358</u>	<u>\$23,680,124</u>

Table B11. State and Local Tax Impacts of Aluminum Foundry Activities (2018 dollars)

Description	Buildout	Operation and Maintenance
Dividends	\$2,612	\$2,766
Social Ins Tax- Employee Contribution	\$2,332	\$2,604
Social Ins Tax- Employer Contribution	\$4,712	\$5,261
Tax on Production and Imports: Sales Tax	\$278,408	\$391,003
Tax on Production and Imports: Property Tax	\$180,886	\$254,040
Tax on Production and Imports: Motor Vehicle Lic	\$4,293	\$6,030
Tax on Production and Imports: Severance Tax	\$312	\$438
Tax on Production and Imports: Other Taxes	\$40,668	\$57,115
Tax on Production and Imports: S/L NonTaxes	\$17,427	\$24,474
Corporate Profits Tax	\$22,166	\$23,478
Personal Tax: Income Tax	\$0	\$0
Personal Tax: NonTaxes (Fines- Fees	\$39,043	\$42,863
Personal Tax: Motor Vehicle License	\$5,755	\$6,318
Personal Tax: Property Taxes	\$2,377	\$2,610
Personal Tax: Other Tax (Fish/Hunt)	\$431	\$474
Total State and Local Tax Impacts	<u>\$601,422</u>	<u>\$819,474</u>

Table B12. Federal Tax Impacts of Aluminum Foundry Activities (2018 dollars)

Description	Buildout	Operation and Maintenance
Social Ins Tax- Employee Contribution	\$371,227	\$409,952
Social Ins Tax- Employer Contribution	\$339,880	\$379,503
Tax on Production and Imports: Excise Taxes	\$46,429	\$65,206
Tax on Production and Imports: Custom Duty	\$17,480	\$24,549
Tax on Production and Imports: Fed NonTaxes	\$2,838	\$3,986
Corporate Profits Tax	\$206,753	\$218,983
Personal Tax: Income Tax	\$577,223	\$633,706
Total Federal Tax Impacts	<u>\$1,561,830</u>	<u>\$1,735,885</u>

Table B13. Total Economic Impacts Associated with Non-cellulosic Fiber Manufacturing Activities

Activity	Impact Type	Employment	Labor Income	Gross State Product	Industry Output
		Jobs	----- 2018 dollars -----		
Buildout	Direct Effect	206.6	\$9,918,293	\$13,895,722	\$26,788,184
	Indirect Effect	42.1	\$2,502,969	\$4,101,864	\$7,766,356
	Induced Effect	329.3	\$15,803,787	\$26,525,720	\$45,278,747
	<u>Total Effect</u>	<u>578.1</u>	<u>\$28,225,050</u>	<u>\$44,523,306</u>	<u>\$79,833,287</u>
Operation and Maintenance	Direct Effect	115	\$22,370,895	\$31,947,142	\$119,243,093
	Indirect Effect	183.5	\$12,147,501	\$19,411,685	\$37,652,716
	Induced Effect	950.1	\$45,749,640	\$76,529,065	\$130,267,598
	<u>Total Effect</u>	<u>1,248.60</u>	<u>\$80,268,037</u>	<u>\$127,887,892</u>	<u>\$287,163,407</u>

Table B14. State and Local Tax Impacts of Non-cellulosic Fiber Manufacturing Activities (2018 dollars)

Description	Buildout	Operation and Maintenance
Dividends	\$12,023	\$33,891
Social Ins Tax- Employee Contribution	\$10,627	\$30,214
Social Ins Tax- Employer Contribution	\$21,473	\$61,046
Tax on Production and Imports: Sales Tax	\$1,254,255	\$4,328,769
Tax on Production and Imports: Property Tax	\$814,908	\$2,812,464
Tax on Production and Imports: Motor Vehicle Lic	\$19,342	\$66,753
Tax on Production and Imports: Severance Tax	\$1,406	\$4,854
Tax on Production and Imports: Other Taxes	\$183,213	\$632,318
Tax on Production and Imports: S/L NonTaxes	\$78,509	\$270,955
Corporate Profits Tax	\$102,042	\$287,643
Personal Tax: Income Tax	\$0	\$0
Personal Tax: NonTaxes (Fines- Fees	\$177,461	\$504,686
Personal Tax: Motor Vehicle License	\$26,158	\$74,393
Personal Tax: Property Taxes	\$10,804	\$30,726
Personal Tax: Other Tax (Fish/Hunt)	\$1,961	\$5,577
Total State and Local Tax Impacts	<u>\$2,714,183</u>	<u>\$9,144,289</u>

Table B15. Federal Tax Impacts of Non-cellulosic Fiber Manufacturing Activities (2018 dollars)

Description	Buildout	Operation and Maintenance
Social Ins Tax- Employee Contribution	\$1,688,874	\$4,802,481
Social Ins Tax- Employer Contribution	\$1,548,949	\$4,403,617
Tax on Production and Imports: Excise Taxes	\$209,166	\$721,887
Tax on Production and Imports: Custom Duty	\$78,749	\$271,783
Tax on Production and Imports: Fed NonTaxes	\$12,786	\$44,129
Corporate Profits Tax	\$951,782	\$2,682,941
Personal Tax: Income Tax	\$2,623,638	\$7,461,447
Total Federal Tax Impacts	<u>\$7,113,944</u>	<u>\$20,388,285</u>

Table B16. Total Economic Impacts Associated with Sheet, Film, and Strapping (PET) Manuf. Activities

Activity	Impact Type	Employment	Labor Income	Gross State Product	Industry Output
		Jobs	----- 2018 dollars -----		
Buildout	Direct Effect	80.8	\$3,952,090	\$5,486,428	\$10,882,784
	Indirect Effect	17.8	\$1,058,844	\$1,725,720	\$3,257,112
	Induced Effect	132.2	\$6,347,196	\$10,652,489	\$18,180,730
	<u>Total Effect</u>	<u>230.8</u>	<u>\$11,358,130</u>	<u>\$17,864,637</u>	<u>\$32,320,627</u>
Operation and Maintenance	Direct Effect	54.0	\$3,088,098	\$6,004,045	\$24,174,158
	Indirect Effect	36.9	\$2,132,052	\$3,497,752	\$6,971,091
	Induced Effect	168.3	\$8,115,873	\$13,565,577	\$23,125,975
	<u>Total Effect</u>	<u>259.2</u>	<u>\$13,336,023</u>	<u>\$23,067,374</u>	<u>\$54,271,225</u>

Table B17. State and Local Tax Impacts of Sheet, Film, and Strapping (PET) Manuf. Activities (2018 dollars)

Description	Buildout	Operation and Maintenance
Dividends	\$4,785	\$7,250
Social Ins Tax- Employee Contribution	\$4,267	\$5,036
Social Ins Tax- Employer Contribution	\$8,622	\$10,175
Tax on Production and Imports: Sales Tax	\$508,826	\$710,679
Tax on Production and Imports: Property Tax	\$330,592	\$461,739
Tax on Production and Imports: Motor Vehicle Lic	\$7,846	\$10,959
Tax on Production and Imports: Severance Tax	\$571	\$797
Tax on Production and Imports: Other Taxes	\$74,326	\$103,811
Tax on Production and Imports: S/L NonTaxes	\$31,849	\$44,484
Corporate Profits Tax	\$40,609	\$61,532
Personal Tax: Income Tax	\$0	\$0
Personal Tax: NonTaxes (Fines- Fees	\$71,425	\$83,828
Personal Tax: Motor Vehicle License	\$10,528	\$12,357
Personal Tax: Property Taxes	\$4,348	\$5,104
Personal Tax: Other Tax (Fish/Hunt)	\$789	\$926
Total State and Local Tax Impacts	<u>\$1,099,384</u>	<u>\$1,518,677</u>

Table B18. Federal Tax Impacts of Sheet, Film, and Strapping (PET) Manuf. Activities (2018 dollars)

Description	Buildout	Operation and Maintenance
Social Ins Tax- Employee Contribution	\$679,195	\$798,644
Social Ins Tax- Employer Contribution	\$621,962	\$733,971
Tax on Production and Imports: Excise Taxes	\$84,854	\$118,516
Tax on Production and Imports: Custom Duty	\$31,947	\$44,620
Tax on Production and Imports: Fed NonTaxes	\$5,187	\$7,245
Corporate Profits Tax	\$378,770	\$573,925
Personal Tax: Income Tax	\$1,055,977	\$1,239,343
Total Federal Tax Impacts	<u>\$2,857,892</u>	<u>\$3,516,264</u>

Table B19. Total Economic Impacts Associated with Food and Non-food Bottle Manuf. Activities

Activity	Impact Type	Employment	Labor Income	Gross State Product	Industry Output
		Jobs	----- 2018 dollars -----		
Buildout	Direct Effect	80.8	\$3,952,090	\$5,486,428	\$10,882,784
	Indirect Effect	17.8	\$1,058,844	\$1,725,720	\$3,257,112
	Induced Effect	132.2	\$6,347,196	\$10,652,489	\$18,180,730
	<u>Total Effect</u>	<u>230.8</u>	<u>\$11,358,130</u>	<u>\$17,864,637</u>	<u>\$32,320,627</u>
Operation and Maintenance	Direct Effect	66.0	\$5,549,044	\$11,973,347	\$33,637,960
	Indirect Effect	38.8	\$2,312,360	\$4,073,754	\$8,207,055
	Induced Effect	277.3	\$13,376,396	\$22,360,177	\$38,164,487
	<u>Total Effect</u>	<u>382.1</u>	<u>\$21,237,800</u>	<u>\$38,407,279</u>	<u>\$80,009,502</u>

Table B20. State and Local Tax Impacts of Food and Non-food Bottle Manuf. Activities (2018 dollars)

Description	Buildout	Operation and Maintenance
Dividends	\$4,785	\$13,079
Social Ins Tax- Employee Contribution	\$4,267	\$8,091
Social Ins Tax- Employer Contribution	\$8,622	\$16,348
Tax on Production and Imports: Sales Tax	\$508,826	\$1,099,588
Tax on Production and Imports: Property Tax	\$330,592	\$714,418
Tax on Production and Imports: Motor Vehicle Lic	\$7,846	\$16,956
Tax on Production and Imports: Severance Tax	\$571	\$1,233
Tax on Production and Imports: Other Taxes	\$74,326	\$160,621
Tax on Production and Imports: S/L NonTaxes	\$31,849	\$68,828
Corporate Profits Tax	\$40,609	\$111,003
Personal Tax: Income Tax	\$0	\$0
Personal Tax: NonTaxes (Fines- Fees	\$71,425	\$133,398
Personal Tax: Motor Vehicle License	\$10,528	\$19,663
Personal Tax: Property Taxes	\$4,348	\$8,121
Personal Tax: Other Tax (Fish/Hunt)	\$789	\$1,474
Total State and Local Tax Impacts	<u>\$1,099,384</u>	<u>\$2,372,823</u>

Table B21. Federal Tax Impacts of Food and Non-food Bottle Manuf. Activities (2018 dollars)

Description	Buildout	Operation and Maintenance
Social Ins Tax- Employee Contribution	\$679,195	\$1,275,171
Social Ins Tax- Employer Contribution	\$621,962	\$1,179,304
Tax on Production and Imports: Excise Taxes	\$84,854	\$183,373
Tax on Production and Imports: Custom Duty	\$31,947	\$69,038
Tax on Production and Imports: Fed NonTaxes	\$5,187	\$11,210
Corporate Profits Tax	\$378,770	\$1,035,361
Personal Tax: Income Tax	\$1,055,977	\$1,972,201
Total Federal Tax Impacts	<u>\$2,857,892</u>	<u>\$5,725,658</u>

Table B22. Total Economic Impacts Associated with Pipe Manuf. Activities

Activity	Impact Type	Employment	Labor Income	Gross State Product	Industry Output
		Jobs	----- 2018 dollars -----		
Buildout	Direct Effect	80.8	\$3,952,090	\$5,486,428	\$10,882,784
	Indirect Effect	17.8	\$1,058,844	\$1,725,720	\$3,257,112
	Induced Effect	132.2	\$6,347,196	\$10,652,489	\$18,180,730
	<u>Total Effect</u>	<u>230.8</u>	<u>\$11,358,130</u>	<u>\$17,864,637</u>	<u>\$32,320,627</u>
Operation and Maintenance	Direct Effect	47.0	\$2,625,259	\$7,109,800	\$24,924,540
	Indirect Effect	32.7	\$1,883,125	\$3,092,257	\$6,077,400
	Induced Effect	174.0	\$8,406,727	\$14,035,107	\$23,950,320
	<u>Total Effect</u>	<u>253.7</u>	<u>\$12,915,110</u>	<u>\$24,237,164</u>	<u>\$54,952,261</u>

Table B23. State and Local Tax Impacts of Pipe Manuf. Activities (2018 dollars)

Description	Buildout	Operation and Maintenance
Dividends	\$4,785	\$8,665
Social Ins Tax- Employee Contribution	\$4,267	\$4,865
Social Ins Tax- Employer Contribution	\$8,622	\$9,830
Tax on Production and Imports: Sales Tax	\$508,826	\$703,273
Tax on Production and Imports: Property Tax	\$330,592	\$456,927
Tax on Production and Imports: Motor Vehicle Lic	\$7,846	\$10,845
Tax on Production and Imports: Severance Tax	\$571	\$789
Tax on Production and Imports: Other Taxes	\$74,326	\$102,729
Tax on Production and Imports: S/L NonTaxes	\$31,849	\$44,021
Corporate Profits Tax	\$40,609	\$73,544
Personal Tax: Income Tax	\$0	\$0
Personal Tax: NonTaxes (Fines- Fees	\$71,425	\$81,198
Personal Tax: Motor Vehicle License	\$10,528	\$11,969
Personal Tax: Property Taxes	\$4,348	\$4,943
Personal Tax: Other Tax (Fish/Hunt)	\$789	\$897
Total State and Local Tax Impacts	<u>\$1,099,384</u>	<u>\$1,514,496</u>

Table B24. Federal Tax Impacts of Pipe Manuf. Activities (2018 dollars)

Description	Buildout	Operation and Maintenance
Social Ins Tax- Employee Contribution	\$679,195	\$772,907
Social Ins Tax- Employer Contribution	\$621,962	\$709,134
Tax on Production and Imports: Excise Taxes	\$84,854	\$117,281
Tax on Production and Imports: Custom Duty	\$31,947	\$44,155
Tax on Production and Imports: Fed NonTaxes	\$5,187	\$7,169
Corporate Profits Tax	\$378,770	\$685,967
Personal Tax: Income Tax	\$1,055,977	\$1,200,462
Total Federal Tax Impacts	<u>\$2,857,892</u>	<u>\$3,537,076</u>

Table B25. Total Economic Impacts Associated with Other Plastic Product Manuf. Activities

Activity	Impact Type	Employment	Labor Income	Gross State Product	Industry Output
		Jobs	----- 2018 dollars -----		
Buildout	Direct Effect	80.8	\$3,952,090	\$5,486,428	\$10,882,784
	Indirect Effect	17.8	\$1,058,844	\$1,725,720	\$3,257,112
	Induced Effect	132.2	\$6,347,196	\$10,652,489	\$18,180,730
	<u>Total Effect</u>	<u>230.8</u>	<u>\$11,358,130</u>	<u>\$17,864,637</u>	<u>\$32,320,627</u>
Operation and Maintenance	Direct Effect	50.0	\$2,513,684	\$3,387,738	\$13,206,420
	Indirect Effect	26.3	\$1,489,519	\$2,400,176	\$4,694,421
	Induced Effect	107.8	\$5,187,695	\$8,680,206	\$14,774,106
	<u>Total Effect</u>	<u>184.1</u>	<u>\$9,190,898</u>	<u>\$14,468,119</u>	<u>\$32,674,947</u>

Table B26. State and Local Tax Impacts of Other Plastic Product Manuf. Activities (2018 dollars)

Description	Buildout	Operation and Maintenance
Dividends	\$4,785	\$3,735
Social Ins Tax- Employee Contribution	\$4,267	\$3,481
Social Ins Tax- Employer Contribution	\$8,622	\$7,033
Tax on Production and Imports: Sales Tax	\$508,826	\$490,977
Tax on Production and Imports: Property Tax	\$330,592	\$318,995
Tax on Production and Imports: Motor Vehicle Lic	\$7,846	\$7,571
Tax on Production and Imports: Severance Tax	\$571	\$551
Tax on Production and Imports: Other Taxes	\$74,326	\$71,719
Tax on Production and Imports: S/L NonTaxes	\$31,849	\$30,732
Corporate Profits Tax	\$40,609	\$31,698
Personal Tax: Income Tax	\$0	\$0
Personal Tax: NonTaxes (Fines- Fees	\$71,425	\$57,758
Personal Tax: Motor Vehicle License	\$10,528	\$8,514
Personal Tax: Property Taxes	\$4,348	\$3,516
Personal Tax: Other Tax (Fish/Hunt)	\$789	\$638
Total State and Local Tax Impacts	<u>\$1,099,384</u>	<u>\$1,036,918</u>

Table B27. Federal Tax Impacts of Other Plastic Product Manuf. Activities (2018 dollars)

Description	Buildout	Operation and Maintenance
Social Ins Tax- Employee Contribution	\$679,195	\$550,887
Social Ins Tax- Employer Contribution	\$621,962	\$507,345
Tax on Production and Imports: Excise Taxes	\$84,854	\$81,878
Tax on Production and Imports: Custom Duty	\$31,947	\$30,826
Tax on Production and Imports: Fed NonTaxes	\$5,187	\$5,005
Corporate Profits Tax	\$378,770	\$295,662
Personal Tax: Income Tax	\$1,055,977	\$853,916
Total Federal Tax Impacts	<u>\$2,857,892</u>	<u>\$2,325,519</u>

Table B28. Total Economic Impacts Associated with Lawn and Garden Product Manuf. Activities

Activity	Impact Type	Employment	Labor Income	Gross State Product	Industry Output
		Jobs	----- 2018 dollars -----		
Buildout	Direct Effect	80.8	\$3,952,090	\$5,486,428	\$10,882,784
	Indirect Effect	17.8	\$1,058,844	\$1,725,720	\$3,257,112
	Induced Effect	132.2	\$6,347,196	\$10,652,489	\$18,180,730
	<u>Total Effect</u>	<u>230.8</u>	<u>\$11,358,130</u>	<u>\$17,864,637</u>	<u>\$32,320,627</u>
Operation and Maintenance	Direct Effect	53	\$3,109,324	\$4,982,786	\$14,483,683
	Indirect Effect	31.3	\$1,786,539	\$2,808,380	\$5,300,380
	Induced Effect	140.9	\$6,778,034	\$11,352,225	\$19,360,829
	<u>Total Effect</u>	<u>225.2</u>	<u>\$11,673,898</u>	<u>\$19,143,390</u>	<u>\$39,144,891</u>

Table B29. State and Local Tax Impacts of Lawn and Garden Product Manuf. Activities (2018 dollars)

Description	Buildout	Operation and Maintenance
Dividends	\$4,785	\$5,516
Social Ins Tax- Employee Contribution	\$4,267	\$4,412
Social Ins Tax- Employer Contribution	\$8,622	\$8,914
Tax on Production and Imports: Sales Tax	\$508,826	\$571,758
Tax on Production and Imports: Property Tax	\$330,592	\$371,479
Tax on Production and Imports: Motor Vehicle Lic	\$7,846	\$8,817
Tax on Production and Imports: Severance Tax	\$571	\$641
Tax on Production and Imports: Other Taxes	\$74,326	\$83,519
Tax on Production and Imports: S/L NonTaxes	\$31,849	\$35,789
Corporate Profits Tax	\$40,609	\$46,814
Personal Tax: Income Tax	\$0	\$0
Personal Tax: NonTaxes (Fines- Fees	\$71,425	\$73,375
Personal Tax: Motor Vehicle License	\$10,528	\$10,816
Personal Tax: Property Taxes	\$4,348	\$4,467
Personal Tax: Other Tax (Fish/Hunt)	\$789	\$811
Total State and Local Tax Impacts	<u>\$1,099,384</u>	<u>\$1,227,127</u>

Table B30. Federal Tax Impacts of Lawn and Garden Product Manuf. Activities (2018 dollars)

Description	Buildout	Operation and Maintenance
Social Ins Tax- Employee Contribution	\$679,195	\$699,270
Social Ins Tax- Employer Contribution	\$621,962	\$643,009
Tax on Production and Imports: Excise Taxes	\$84,854	\$95,349
Tax on Production and Imports: Custom Duty	\$31,947	\$35,898
Tax on Production and Imports: Fed NonTaxes	\$5,187	\$5,829
Corporate Profits Tax	\$378,770	\$436,654
Personal Tax: Income Tax	\$1,055,977	\$1,084,806
Total Federal Tax Impacts	<u>\$2,857,892</u>	<u>\$3,000,815</u>

Table B31. Total Economic Impacts Associated with Sheet and Film (HDPE) Manuf. Activities

Activity	Impact Type	Employment	Labor Income	Gross State Product	Industry Output
		Jobs	----- 2018 dollars -----		
Buildout	Direct Effect	80.8	\$3,952,090	\$5,486,428	\$10,882,784
	Indirect Effect	17.8	\$1,058,844	\$1,725,720	\$3,257,112
	Induced Effect	132.2	\$6,347,196	\$10,652,489	\$18,180,730
	<u>Total Effect</u>	<u>230.8</u>	<u>\$11,358,130</u>	<u>\$17,864,637</u>	<u>\$32,320,627</u>
Operation and Maintenance	Direct Effect	60.0	\$3,431,220	\$6,671,161	\$26,860,174
	Indirect Effect	41.0	\$2,368,947	\$3,886,391	\$7,745,657
	Induced Effect	187.0	\$9,017,636	\$15,072,863	\$25,695,527
	<u>Total Effect</u>	<u>288.0</u>	<u>\$14,817,802</u>	<u>\$25,630,414</u>	<u>\$60,301,358</u>

Table B32. State and Local Tax Impacts of Sheet and Film (HDPE) Manuf. Activities (2018 dollars)

Description	Buildout	Operation and Maintenance
Dividends	\$4,785	\$8,055
Social Ins Tax- Employee Contribution	\$4,267	\$5,595
Social Ins Tax- Employer Contribution	\$8,622	\$11,305
Tax on Production and Imports: Sales Tax	\$508,826	\$789,644
Tax on Production and Imports: Property Tax	\$330,592	\$513,043
Tax on Production and Imports: Motor Vehicle Lic	\$7,846	\$12,177
Tax on Production and Imports: Severance Tax	\$571	\$885
Tax on Production and Imports: Other Taxes	\$74,326	\$115,346
Tax on Production and Imports: S/L NonTaxes	\$31,849	\$49,427
Corporate Profits Tax	\$40,609	\$68,368
Personal Tax: Income Tax	\$0	\$0
Personal Tax: NonTaxes (Fines- Fees	\$71,425	\$93,142
Personal Tax: Motor Vehicle License	\$10,528	\$13,730
Personal Tax: Property Taxes	\$4,348	\$5,671
Personal Tax: Other Tax (Fish/Hunt)	\$789	\$1,029
Total State and Local Tax Impacts	<u>\$1,099,384</u>	<u>\$1,687,419</u>

Table B33. Federal Tax Impacts of Sheet and Film (HDPE) Manuf. Activities (2018 dollars)

Description	Buildout	Operation and Maintenance
Social Ins Tax- Employee Contribution	\$679,195	\$887,383
Social Ins Tax- Employer Contribution	\$621,962	\$815,524
Tax on Production and Imports: Excise Taxes	\$84,854	\$131,685
Tax on Production and Imports: Custom Duty	\$31,947	\$49,578
Tax on Production and Imports: Fed NonTaxes	\$5,187	\$8,050
Corporate Profits Tax	\$378,770	\$637,695
Personal Tax: Income Tax	\$1,055,977	\$1,377,048
Total Federal Tax Impacts	<u>\$2,857,892</u>	<u>\$3,906,963</u>

Table B34. Total Economic Impacts Associated with Liquid Fuels Manuf. Activities

Activity	Impact Type	Employment	Labor Income	Gross State Product	Industry Output
		Jobs	----- 2018 dollars -----		
Buildout	Direct Effect	92.8	\$4,454,650	\$6,241,052	\$12,031,504
	Indirect Effect	18.9	\$1,124,170	\$1,842,290	\$3,488,140
	Induced Effect	147.9	\$7,098,030	\$11,913,622	\$20,336,258
	<u>Total Effect</u>	<u>259.6</u>	<u>\$12,676,851</u>	<u>\$19,996,964</u>	<u>\$35,855,903</u>
Operation and Maintenance	Direct Effect	14.5	\$1,634,992	\$10,221,661	\$128,015,006
	Indirect Effect	115.0	\$6,941,235	\$11,664,746	\$22,233,455
	Induced Effect	249.9	\$12,092,936	\$20,125,217	\$34,109,762
	<u>Total Effect</u>	<u>379.4</u>	<u>\$20,669,163</u>	<u>\$42,011,624</u>	<u>\$184,358,223</u>

Table B35. State and Local Tax Impacts of Liquid Fuels Manuf. Activities (2018 dollars)

Description	Buildout	Operation and Maintenance
Dividends	\$5,400	\$14,374
Social Ins Tax- Employee Contribution	\$4,773	\$7,602
Social Ins Tax- Employer Contribution	\$9,644	\$15,359
Tax on Production and Imports: Sales Tax	\$563,330	\$2,377,528
Tax on Production and Imports: Property Tax	\$366,004	\$1,544,715
Tax on Production and Imports: Motor Vehicle Lic	\$8,687	\$36,663
Tax on Production and Imports: Severance Tax	\$632	\$2,666
Tax on Production and Imports: Other Taxes	\$82,287	\$347,294
Tax on Production and Imports: S/L NonTaxes	\$35,261	\$148,820
Corporate Profits Tax	\$45,831	\$122,000
Personal Tax: Income Tax	\$0	\$0
Personal Tax: NonTaxes (Fines- Fees	\$79,704	\$130,205
Personal Tax: Motor Vehicle License	\$11,749	\$19,193
Personal Tax: Property Taxes	\$4,852	\$7,927
Personal Tax: Other Tax (Fish/Hunt)	\$881	\$1,439
Total State and Local Tax Impacts	<u>\$1,219,034</u>	<u>\$4,775,783</u>

Table B36. Federal Tax Impacts of Liquid Fuels Manuf. Activities (2018 dollars)

Description	Buildout	Operation and Maintenance
Social Ins Tax- Employee Contribution	\$758,532	\$1,228,381
Social Ins Tax- Employer Contribution	\$695,687	\$1,107,923
Tax on Production and Imports: Excise Taxes	\$93,944	\$396,488
Tax on Production and Imports: Custom Duty	\$35,369	\$149,274
Tax on Production and Imports: Fed NonTaxes	\$5,743	\$24,238
Corporate Profits Tax	\$427,478	\$1,137,931
Personal Tax: Income Tax	\$1,178,367	\$1,924,997
Total Federal Tax Impacts	<u>\$3,195,119</u>	<u>\$5,969,231</u>

Table B37. Total Economic Impacts Associated with Electronic Computer Refurbishing Activities

Activity	Impact Type	Employment	Labor Income	Gross State Product	Industry Output
		Jobs	----- 2018 dollars -----		
Buildout	Direct Effect	65.4	\$3,165,940	\$4,418,227	\$8,622,352
	Indirect Effect	13.8	\$820,031	\$1,340,605	\$2,534,729
	Induced Effect	105.5	\$5,061,720	\$8,495,487	\$14,500,624
	<u>Total Effect</u>	<u>184.7</u>	<u>\$9,047,691</u>	<u>\$14,254,319</u>	<u>\$25,657,704</u>
Operation and Maintenance	Direct Effect	64.0	\$4,825,119	\$13,888,899	\$61,893,348
	Indirect Effect	95.6	\$6,589,391	\$11,257,396	\$20,441,923
	Induced Effect	436.3	\$21,128,773	\$35,187,725	\$59,889,284
	<u>Total Effect</u>	<u>596</u>	<u>\$32,543,283</u>	<u>\$60,334,020</u>	<u>\$142,224,555</u>

Table B38. State and Local Tax Impacts of Electronic Computer Refurbishing Activities (2018 dollars)

Description	Buildout	Operation and Maintenance
Dividends	\$3,836	\$20,616
Social Ins Tax- Employee Contribution	\$3,404	\$12,335
Social Ins Tax- Employer Contribution	\$6,877	\$24,923
Tax on Production and Imports: Sales Tax	\$403,463	\$2,077,119
Tax on Production and Imports: Property Tax	\$262,136	\$1,349,535
Tax on Production and Imports: Motor Vehicle Lic	\$6,222	\$32,031
Tax on Production and Imports: Severance Tax	\$452	\$2,329
Tax on Production and Imports: Other Taxes	\$58,935	\$303,412
Tax on Production and Imports: S/L NonTaxes	\$25,254	\$130,015
Corporate Profits Tax	\$32,554	\$174,969
Personal Tax: Income Tax	\$0	\$0
Personal Tax: NonTaxes (Fines- Fees	\$56,890	\$204,497
Personal Tax: Motor Vehicle License	\$8,386	\$30,144
Personal Tax: Property Taxes	\$3,464	\$12,450
Personal Tax: Other Tax (Fish/Hunt)	\$629	\$2,260
Total State and Local Tax Impacts	<u>\$872,500</u>	<u>\$4,376,635</u>

Table B39. Federal Tax Impacts of Electronic Computer Refurbishing Activities (2018 dollars)

Description	Buildout	Operation and Maintenance
Social Ins Tax- Employee Contribution	\$541,230	\$1,951,045
Social Ins Tax- Employer Contribution	\$496,059	\$1,797,840
Tax on Production and Imports: Excise Taxes	\$67,283	\$346,391
Tax on Production and Imports: Custom Duty	\$25,332	\$130,413
Tax on Production and Imports: Fed NonTaxes	\$4,113	\$21,175
Corporate Profits Tax	\$303,646	\$1,631,997
Personal Tax: Income Tax	\$841,087	\$3,023,359
Total Federal Tax Impacts	<u>\$2,278,750</u>	<u>\$8,902,219</u>

Table B40. Total Economic Impacts Associated with Telephone Apparatus Refurbishing Activities

Activity	Impact Type	Employment	Labor Income	Gross State Product	Industry Output
		Jobs	----- 2018 dollars -----		
Buildout	Direct Effect	68.0	\$3,349,845	\$4,632,661	\$9,297,525
	Indirect Effect	15.4	\$919,047	\$1,494,735	\$2,817,727
	Induced Effect	112.4	\$5,397,476	\$9,058,261	\$15,458,867
	<u>Total Effect</u>	<u>195.9</u>	<u>\$9,666,368</u>	<u>\$15,185,657</u>	<u>\$27,574,118</u>
Operation and Maintenance	Direct Effect	64	\$4,444,454	\$10,387,830	\$40,304,018
	Indirect Effect	86.1	\$5,692,627	\$9,182,624	\$16,759,610
	Induced Effect	346.8	\$16,769,973	\$27,957,547	\$47,570,200
	<u>Total Effect</u>	<u>496.9</u>	<u>\$26,907,054</u>	<u>\$47,528,001</u>	<u>\$104,633,828</u>

Table B41. State and Local Tax Impacts of Telephone Apparatus Refurbishing Activities (2018 dollars)

Description	Buildout	Operation and Maintenance
Dividends	\$4,053	\$15,080
Social Ins Tax- Employee Contribution	\$3,629	\$10,275
Social Ins Tax- Employer Contribution	\$7,331	\$20,761
Tax on Production and Imports: Sales Tax	\$434,460	\$1,657,857
Tax on Production and Imports: Property Tax	\$282,275	\$1,077,134
Tax on Production and Imports: Motor Vehicle Lic	\$6,700	\$25,565
Tax on Production and Imports: Severance Tax	\$487	\$1,859
Tax on Production and Imports: Other Taxes	\$63,463	\$242,169
Tax on Production and Imports: S/L NonTaxes	\$27,195	\$103,772
Corporate Profits Tax	\$34,402	\$127,984
Personal Tax: Income Tax	\$0	\$0
Personal Tax: NonTaxes (Fines- Fees	\$60,791	\$168,974
Personal Tax: Motor Vehicle License	\$8,961	\$24,908
Personal Tax: Property Taxes	\$3,701	\$10,287
Personal Tax: Other Tax (Fish/Hunt)	\$672	\$1,867
Total State and Local Tax Impacts	<u>\$938,120</u>	<u>\$3,488,492</u>

Table B42. Federal Tax Impacts of Telephone Apparatus Refurbishing Activities (2018 dollars)

Description	Buildout	Operation and Maintenance
Social Ins Tax- Employee Contribution	\$577,881	\$1,616,674
Social Ins Tax- Employer Contribution	\$528,852	\$1,497,590
Tax on Production and Imports: Excise Taxes	\$72,453	\$276,472
Tax on Production and Imports: Custom Duty	\$27,278	\$104,089
Tax on Production and Imports: Fed NonTaxes	\$4,429	\$16,901
Corporate Profits Tax	\$320,881	\$1,193,754
Personal Tax: Income Tax	\$898,758	\$2,498,174
Total Federal Tax Impacts	<u>\$2,430,531</u>	<u>\$7,203,654</u>

Table B43. Total Economic Impacts Associated with Audio and Video Equip. Refurbishing Activities

Activity	Impact Type	Employment	Labor Income	Gross State Product	Industry Output
		Jobs	----- 2018 dollars -----		
Buildout	Direct Effect	68.0	\$3,349,845	\$4,632,661	\$9,297,525
	Indirect Effect	15.4	\$919,047	\$1,494,735	\$2,817,727
	Induced Effect	112.4	\$5,397,476	\$9,058,261	\$15,458,867
	<u>Total Effect</u>	<u>195.9</u>	<u>\$9,666,368</u>	<u>\$15,185,657</u>	<u>\$27,574,118</u>
Operation and Maintenance	Direct Effect	64.0	\$3,651,598	\$6,868,005	\$24,191,814
	Indirect Effect	45.0	\$2,984,362	\$4,846,263	\$8,938,669
	Induced Effect	212.4	\$10,271,621	\$17,112,496	\$29,071,653
	<u>Total Effect</u>	<u>321.3</u>	<u>\$16,907,580</u>	<u>\$28,826,764</u>	<u>\$62,202,136</u>

Table B44. State and Local Tax Impacts of Audio and Video Equip. Refurbishing Activities (2018 dollars)

Description	Buildout	Operation and Maintenance
Dividends	\$4,053	\$8,454
Social Ins Tax- Employee Contribution	\$3,629	\$6,484
Social Ins Tax- Employer Contribution	\$7,331	\$13,101
Tax on Production and Imports: Sales Tax	\$434,460	\$1,099,202
Tax on Production and Imports: Property Tax	\$282,275	\$714,168
Tax on Production and Imports: Motor Vehicle Lic	\$6,700	\$16,951
Tax on Production and Imports: Severance Tax	\$487	\$1,233
Tax on Production and Imports: Other Taxes	\$63,463	\$160,564
Tax on Production and Imports: S/L NonTaxes	\$27,195	\$68,803
Corporate Profits Tax	\$34,402	\$71,748
Personal Tax: Income Tax	\$0	\$0
Personal Tax: NonTaxes (Fines- Fees	\$60,791	\$106,140
Personal Tax: Motor Vehicle License	\$8,961	\$15,646
Personal Tax: Property Taxes	\$3,701	\$6,462
Personal Tax: Other Tax (Fish/Hunt)	\$672	\$1,173
Total State and Local Tax Impacts	<u>\$938,120</u>	<u>\$2,290,127</u>

Table B45. Federal Tax Impacts of Audio and Video Equip. Refurbishing Activities (2018 dollars)

Description	Buildout	Operation and Maintenance
Social Ins Tax- Employee Contribution	\$577,881	\$1,017,148
Social Ins Tax- Employer Contribution	\$528,852	\$945,068
Tax on Production and Imports: Excise Taxes	\$72,453	\$183,308
Tax on Production and Imports: Custom Duty	\$27,278	\$69,014
Tax on Production and Imports: Fed NonTaxes	\$4,429	\$11,206
Corporate Profits Tax	\$320,881	\$669,218
Personal Tax: Income Tax	\$898,758	\$1,569,210
Total Federal Tax Impacts	<u>\$2,430,531</u>	<u>\$4,464,173</u>

Table B46. Total Economic Impacts Associated with Broadcast & Wireless Equip. Refurbishing Activities

Activity	Impact Type	Employment	Labor Income	Gross State Product	Industry Output
		Jobs	----- 2018 dollars -----		
Buildout	Direct Effect	68.0	\$3,349,845	\$4,632,661	\$9,297,525
	Indirect Effect	15.4	\$919,047	\$1,494,735	\$2,817,727
	Induced Effect	112.4	\$5,397,476	\$9,058,261	\$15,458,867
	<u>Total Effect</u>	<u>195.9</u>	<u>\$9,666,368</u>	<u>\$15,185,657</u>	<u>\$27,574,118</u>
Operation and Maintenance	Direct Effect	64	\$7,847,412	\$12,681,415	\$28,349,346
	Indirect Effect	48.1	\$2,865,087	\$4,663,672	\$8,154,718
	Induced Effect	313	\$15,070,193	\$25,225,909	\$43,005,655
	<u>Total Effect</u>	<u>425.2</u>	<u>\$25,782,692</u>	<u>\$42,570,995</u>	<u>\$79,509,719</u>

Table B47. State and Local Tax Impacts of Broadcast & Wireless Equip. Refurbishing Activities (2018 dollars)

Description	Buildout	Operation and Maintenance
Dividends	\$4,053	\$12,347
Social Ins Tax- Employee Contribution	\$3,629	\$9,916
Social Ins Tax- Employer Contribution	\$7,331	\$20,035
Tax on Production and Imports: Sales Tax	\$434,460	\$1,312,115
Tax on Production and Imports: Property Tax	\$282,275	\$852,500
Tax on Production and Imports: Motor Vehicle Lic	\$6,700	\$20,234
Tax on Production and Imports: Severance Tax	\$487	\$1,471
Tax on Production and Imports: Other Taxes	\$63,463	\$191,665
Tax on Production and Imports: S/L NonTaxes	\$27,195	\$82,131
Corporate Profits Tax	\$34,402	\$104,792
Personal Tax: Income Tax	\$0	\$0
Personal Tax: NonTaxes (Fines- Fees	\$60,791	\$161,816
Personal Tax: Motor Vehicle License	\$8,961	\$23,852
Personal Tax: Property Taxes	\$3,701	\$9,852
Personal Tax: Other Tax (Fish/Hunt)	\$672	\$1,788
Total State and Local Tax Impacts	<u>\$938,120</u>	<u>\$2,804,514</u>

Table B48. Federal Tax Impacts of Broadcast & Wireless Equip. Refurbishing Activities (2018 dollars)

Description	Buildout	Operation and Maintenance
Social Ins Tax- Employee Contribution	\$577,881	\$1,552,376
Social Ins Tax- Employer Contribution	\$528,852	\$1,445,265
Tax on Production and Imports: Excise Taxes	\$72,453	\$218,815
Tax on Production and Imports: Custom Duty	\$27,278	\$82,382
Tax on Production and Imports: Fed NonTaxes	\$4,429	\$13,376
Corporate Profits Tax	\$320,881	\$977,428
Personal Tax: Income Tax	\$898,758	\$2,392,340
Total Federal Tax Impacts	<u>\$2,430,531</u>	<u>\$6,681,981</u>

Table B49. Total Economic Impacts Associated with Recycled Glass Processing Activities

Activity	Impact Type	Employment	Labor Income	Gross State Product	Industry Output
		Jobs	----- 2018 dollars -----		
Buildout	Direct Effect	2.6	\$140,158	\$189,288	\$449,588
	Indirect Effect	1.0	\$56,740	\$89,875	\$172,482
	Induced Effect	5.2	\$248,842	\$417,010	\$710,631
	<u>Total Effect</u>	<u>8.8</u>	<u>\$445,739</u>	<u>\$696,173</u>	<u>\$1,332,701</u>
Operation and Maintenance	Direct Effect	3.0	\$187,064	\$283,052	\$617,145
	Indirect Effect	2.0	\$102,027	\$159,490	\$294,542
	Induced Effect	8.5	\$412,017	\$686,651	\$1,165,788
	<u>Total Effect</u>	<u>13.5</u>	<u>\$701,108</u>	<u>\$1,129,193</u>	<u>\$2,077,475</u>

Table B50. State and Local Tax Impacts of Recycled Glass Processing Activities (2018 dollars)

Description	Buildout	Operation and Maintenance
Dividends	\$180	\$310
Social Ins Tax- Employee Contribution	\$165	\$265
Social Ins Tax- Employer Contribution	\$333	\$536
Tax on Production and Imports: Sales Tax	\$22,032	\$35,941
Tax on Production and Imports: Property Tax	\$14,315	\$23,351
Tax on Production and Imports: Motor Vehicle Lic	\$340	\$554
Tax on Production and Imports: Severance Tax	\$25	\$40
Tax on Production and Imports: Other Taxes	\$3,218	\$5,250
Tax on Production and Imports: S/L NonTaxes	\$1,379	\$2,250
Corporate Profits Tax	\$1,524	\$2,633
Personal Tax: Income Tax	\$0	\$0
Personal Tax: NonTaxes (Fines- Fees	\$2,807	\$4,406
Personal Tax: Motor Vehicle License	\$414	\$649
Personal Tax: Property Taxes	\$171	\$268
Personal Tax: Other Tax (Fish/Hunt)	\$31	\$49
Total State and Local Tax Impacts	<u>\$46,933</u>	<u>\$76,504</u>

Table B51. Federal Tax Impacts of Recycled Glass Processing Activities (2018 dollars)

Description	Buildout	Operation and Maintenance
Social Ins Tax- Employee Contribution	\$26,526	\$42,015
Social Ins Tax- Employer Contribution	\$24,002	\$38,674
Tax on Production and Imports: Excise Taxes	\$3,674	\$5,994
Tax on Production and Imports: Custom Duty	\$1,383	\$2,257
Tax on Production and Imports: Fed NonTaxes	\$225	\$366
Corporate Profits Tax	\$14,218	\$24,557
Personal Tax: Income Tax	\$41,498	\$65,143
Total Federal Tax Impacts	<u>\$111,525</u>	<u>\$179,006</u>

Table B52. Total Economic Impacts Associated with Recovered Building Materials Activities

Activity	Impact Type	Employment	Labor Income	Gross State Product	Industry Output
		Jobs	----- 2018 dollars -----		
Buildout	Direct Effect	12.6	\$577,856	\$842,341	\$1,698,014
	Indirect Effect	3.2	\$189,099	\$304,477	\$607,685
	Induced Effect	21.0	\$1,009,075	\$1,690,808	\$2,882,761
	<u>Total Effect</u>	<u>36.9</u>	<u>\$1,776,031</u>	<u>\$2,837,626</u>	<u>\$5,188,459</u>
Operation and Maintenance	Direct Effect	20.0	\$824,195	\$1,019,241	\$1,918,112
	Indirect Effect	7.6	\$320,312	\$613,953	\$1,061,824
	Induced Effect	30.2	\$1,453,561	\$2,436,324	\$4,152,691
	<u>Total Effect</u>	<u>57.8</u>	<u>\$2,598,067</u>	<u>\$4,069,518</u>	<u>\$7,132,628</u>

Table B53. State and Local Tax Impacts of Recovered Building Materials Activities (2018 dollars)

Description	Buildout	Operation and Maintenance
Dividends	\$773	\$1,062
Social Ins Tax- Employee Contribution	\$663	\$986
Social Ins Tax- Employer Contribution	\$1,339	\$1,993
Tax on Production and Imports: Sales Tax	\$87,026	\$125,706
Tax on Production and Imports: Property Tax	\$56,542	\$81,673
Tax on Production and Imports: Motor Vehicle Lic	\$1,342	\$1,938
Tax on Production and Imports: Severance Tax	\$98	\$141
Tax on Production and Imports: Other Taxes	\$12,712	\$18,362
Tax on Production and Imports: S/L NonTaxes	\$5,447	\$7,868
Corporate Profits Tax	\$6,562	\$9,015
Personal Tax: Income Tax	\$0	\$0
Personal Tax: NonTaxes (Fines- Fees	\$11,175	\$16,324
Personal Tax: Motor Vehicle License	\$1,647	\$2,406
Personal Tax: Property Taxes	\$680	\$994
Personal Tax: Other Tax (Fish/Hunt)	\$123	\$180
Total State and Local Tax Impacts	<u>\$186,131</u>	<u>\$268,650</u>

Table B54. Federal Tax Impacts of Recovered Building Materials Activities (2018 dollars)

Description	Buildout	Operation and Maintenance
Social Ins Tax- Employee Contribution	\$105,991	\$155,833
Social Ins Tax- Employer Contribution	\$96,585	\$143,759
Tax on Production and Imports: Excise Taxes	\$14,513	\$20,963
Tax on Production and Imports: Custom Duty	\$5,464	\$7,892
Tax on Production and Imports: Fed NonTaxes	\$887	\$1,281
Corporate Profits Tax	\$61,209	\$84,090
Personal Tax: Income Tax	\$165,214	\$241,335
Total Federal Tax Impacts	<u>\$449,862</u>	<u>\$655,153</u>

Table B55. Total Economic Impacts Associated with Processing of Electronic Scrap Activities

Activity	Impact Type	Employment	Labor Income	Gross State Product	Industry Output
		Jobs	----- 2018 dollars -----		
Buildout	Direct Effect	17.2	\$913,468	\$1,233,667	\$2,930,152
	Indirect Effect	6.2	\$369,796	\$585,752	\$1,124,135
	Induced Effect	33.7	\$1,621,805	\$2,717,827	\$4,631,479
	<u>Total Effect</u>	<u>57.2</u>	<u>\$2,905,069</u>	<u>\$4,537,246</u>	<u>\$8,685,766</u>
Operation and Maintenance	Direct Effect	20	\$1,247,096	\$1,887,012	\$4,114,298
	Indirect Effect	13	\$680,177	\$1,063,267	\$1,963,611
	Induced Effect	56.8	\$2,746,779	\$4,577,680	\$7,771,927
	<u>Total Effect</u>	<u>89.9</u>	<u>\$4,674,052</u>	<u>\$7,527,959</u>	<u>\$13,849,836</u>

Table B56. State and Local Tax Impacts of Processing of Electronic Scrap Activities (2018 dollars)

Description	Buildout	Operation and Maintenance
Dividends	\$1,171	\$2,068
Social Ins Tax- Employee Contribution	\$1,073	\$1,769
Social Ins Tax- Employer Contribution	\$2,169	\$3,574
Tax on Production and Imports: Sales Tax	\$143,594	\$239,608
Tax on Production and Imports: Property Tax	\$93,295	\$155,677
Tax on Production and Imports: Motor Vehicle Lic	\$2,214	\$3,695
Tax on Production and Imports: Severance Tax	\$161	\$269
Tax on Production and Imports: Other Taxes	\$20,975	\$35,000
Tax on Production and Imports: S/L NonTaxes	\$8,988	\$14,998
Corporate Profits Tax	\$9,935	\$17,552
Personal Tax: Income Tax	\$0	\$0
Personal Tax: NonTaxes (Fines- Fees	\$18,294	\$29,375
Personal Tax: Motor Vehicle License	\$2,697	\$4,330
Personal Tax: Property Taxes	\$1,114	\$1,788
Personal Tax: Other Tax (Fish/Hunt)	\$202	\$325
Total State and Local Tax Impacts	<u>\$305,881</u>	<u>\$510,027</u>

Table B57. Federal Tax Impacts of Processing of Electronic Scrap Activities (2018 dollars)

Description	Buildout	Operation and Maintenance
Social Ins Tax- Employee Contribution	\$172,876	\$280,098
Social Ins Tax- Employer Contribution	\$156,429	\$257,830
Tax on Production and Imports: Excise Taxes	\$23,946	\$39,958
Tax on Production and Imports: Custom Duty	\$9,016	\$15,044
Tax on Production and Imports: Fed NonTaxes	\$1,464	\$2,443
Corporate Profits Tax	\$92,662	\$163,715
Personal Tax: Income Tax	\$270,460	\$434,287
Total Federal Tax Impacts	<u>\$726,853</u>	<u>\$1,193,375</u>

Table B58. Total Economic Impacts Associated with Mattress and Carpet Materials Recovery Activities

Activity	Impact Type	Employment	Labor Income	Gross State Product	Industry Output
		Jobs	----- 2018 dollars -----		
Buildout	Direct Effect	25.9	\$1,370,203	\$1,850,502	\$4,395,229
	Indirect Effect	9.4	\$554,694	\$878,627	\$1,686,203
	Induced Effect	50.6	\$2,432,707	\$4,076,742	\$6,947,220
	<u>Total Effect</u>	<u>85.8</u>	<u>\$4,357,604</u>	<u>\$6,805,871</u>	<u>\$13,028,652</u>
Operation and Maintenance	Direct Effect	30.0	\$1,870,644	\$2,830,518	\$6,171,447
	Indirect Effect	19.6	\$1,020,265	\$1,594,901	\$2,945,416
	Induced Effect	85.3	\$4,120,169	\$6,866,520	\$11,657,891
	<u>Total Effect</u>	<u>134.8</u>	<u>\$7,011,078</u>	<u>\$11,291,939</u>	<u>\$20,774,754</u>

Table B59. State and Local Tax Impacts of Mattress and Carpet Materials Recovery Activities (2018 dollars)

Description	Buildout	Operation and Maintenance
Dividends	\$1,756	\$3,102
Social Ins Tax- Employee Contribution	\$1,610	\$2,653
Social Ins Tax- Employer Contribution	\$3,253	\$5,361
Tax on Production and Imports: Sales Tax	\$215,391	\$359,412
Tax on Production and Imports: Property Tax	\$139,943	\$233,515
Tax on Production and Imports: Motor Vehicle Lic	\$3,321	\$5,542
Tax on Production and Imports: Severance Tax	\$242	\$403
Tax on Production and Imports: Other Taxes	\$31,463	\$52,500
Tax on Production and Imports: S/L NonTaxes	\$13,482	\$22,497
Corporate Profits Tax	\$14,902	\$26,328
Personal Tax: Income Tax	\$0	\$0
Personal Tax: NonTaxes (Fines- Fees	\$27,441	\$44,062
Personal Tax: Motor Vehicle License	\$4,045	\$6,495
Personal Tax: Property Taxes	\$1,671	\$2,683
Personal Tax: Other Tax (Fish/Hunt)	\$303	\$487
Total State and Local Tax Impacts	<u>\$458,822</u>	<u>\$765,042</u>

Table B60. Federal Tax Impacts of Mattress and Carpet Materials Recovery Activities (2018 dollars)

Description	Buildout	Operation and Maintenance
Social Ins Tax- Employee Contribution	\$259,314	\$420,147
Social Ins Tax- Employer Contribution	\$234,644	\$386,745
Tax on Production and Imports: Excise Taxes	\$35,920	\$59,937
Tax on Production and Imports: Custom Duty	\$13,523	\$22,566
Tax on Production and Imports: Fed NonTaxes	\$2,196	\$3,664
Corporate Profits Tax	\$138,994	\$245,572
Personal Tax: Income Tax	\$405,690	\$651,430
Total Federal Tax Impacts	<u>\$1,090,280</u>	<u>\$1,790,061</u>

Table B61. Total Economic Impacts Associated with Industrial Rubber Compound Manuf. Activities

Activity	Impact Type	Employment	Labor Income	Gross State Product	Industry Output
		Jobs	----- 2018 dollars -----		
Buildout	Direct Effect	80.8	\$3,952,090	\$5,486,428	\$10,882,784
	Indirect Effect	17.8	\$1,058,844	\$1,725,720	\$3,257,112
	Induced Effect	132.2	\$6,347,196	\$10,652,489	\$18,180,730
	<u>Total Effect</u>	<u>230.8</u>	<u>\$11,358,130</u>	<u>\$17,864,637</u>	<u>\$32,320,627</u>
Operation and Maintenance	Direct Effect	55	\$3,507,436	\$6,118,375	\$18,328,573
	Indirect Effect	39.9	\$2,208,204	\$3,425,255	\$6,609,490
	Induced Effect	173.3	\$8,359,368	\$13,960,679	\$23,758,255
	<u>Total Effect</u>	<u>268.2</u>	<u>\$14,075,007</u>	<u>\$23,504,309</u>	<u>\$48,696,318</u>

Table B62. State and Local Tax Impacts of Industrial Rubber Compound Manuf. Activities (2018 dollars)

Description	Buildout	Operation and Maintenance
Dividends	\$4,785	\$6,805
Social Ins Tax- Employee Contribution	\$4,267	\$5,327
Social Ins Tax- Employer Contribution	\$8,622	\$10,762
Tax on Production and Imports: Sales Tax	\$508,826	\$806,538
Tax on Production and Imports: Property Tax	\$330,592	\$524,020
Tax on Production and Imports: Motor Vehicle Lic	\$7,846	\$12,437
Tax on Production and Imports: Severance Tax	\$571	\$904
Tax on Production and Imports: Other Taxes	\$74,326	\$117,814
Tax on Production and Imports: S/L NonTaxes	\$31,849	\$50,484
Corporate Profits Tax	\$40,609	\$57,757
Personal Tax: Income Tax	\$0	\$0
Personal Tax: NonTaxes (Fines- Fees	\$71,425	\$88,457
Personal Tax: Motor Vehicle License	\$10,528	\$13,039
Personal Tax: Property Taxes	\$4,348	\$5,385
Personal Tax: Other Tax (Fish/Hunt)	\$789	\$978
Total State and Local Tax Impacts	<u>\$1,099,384</u>	<u>\$1,700,708</u>

Table B63. Federal Tax Impacts of Industrial Rubber Compound Manuf. Activities (2018 dollars)

Description	Buildout	Operation and Maintenance
Social Ins Tax- Employee Contribution	\$679,195	\$843,440
Social Ins Tax- Employer Contribution	\$621,962	\$776,343
Tax on Production and Imports: Excise Taxes	\$84,854	\$134,502
Tax on Production and Imports: Custom Duty	\$31,947	\$50,639
Tax on Production and Imports: Fed NonTaxes	\$5,187	\$8,222
Corporate Profits Tax	\$378,770	\$538,719
Personal Tax: Income Tax	\$1,055,977	\$1,307,779
Total Federal Tax Impacts	<u>\$2,857,892</u>	<u>\$3,659,644</u>

Table B64. Total Economic Impacts Associated with Recycled Paper Manuf. Activities

Activity	Impact Type	Employment	Labor Income	Gross State Product	Industry Output
		Jobs	----- 2018 dollars -----		
Buildout	Direct Effect	309.5	\$15,657,032	\$21,382,422	\$44,572,966
	Indirect Effect	77.6	\$4,624,761	\$7,474,856	\$14,039,679
	Induced Effect	531.1	\$25,494,908	\$42,781,795	\$72,996,740
	<u>Total Effect</u>	<u>918.2</u>	<u>\$45,776,701</u>	<u>\$71,639,072</u>	<u>\$131,609,386</u>
Operation and Maintenance	Direct Effect	120.0	\$12,032,105	\$26,545,169	\$103,915,004
	Indirect Effect	270.9	\$15,954,618	\$25,819,783	\$50,619,058
	Induced Effect	965.3	\$46,763,259	\$77,791,290	\$132,091,150
	<u>Total Effect</u>	<u>1,356.30</u>	<u>\$74,749,981</u>	<u>\$130,156,241</u>	<u>\$286,625,212</u>

Table B65. State and Local Tax Impacts of Recycled Paper Manuf. Activities (2018 dollars)

Description	Buildout	Operation and Maintenance
Dividends	\$18,913	\$39,737
Social Ins Tax- Employee Contribution	\$17,134	\$28,101
Social Ins Tax- Employer Contribution	\$34,619	\$56,778
Tax on Production and Imports: Sales Tax	\$2,079,085	\$4,873,224
Tax on Production and Imports: Property Tax	\$1,350,812	\$3,166,205
Tax on Production and Imports: Motor Vehicle Lic	\$32,061	\$75,149
Tax on Production and Imports: Severance Tax	\$2,331	\$5,465
Tax on Production and Imports: Other Taxes	\$303,699	\$711,848
Tax on Production and Imports: S/L NonTaxes	\$130,138	\$305,035
Corporate Profits Tax	\$160,518	\$337,259
Personal Tax: Income Tax	\$0	\$0
Personal Tax: NonTaxes (Fines- Fees	\$287,955	\$470,040
Personal Tax: Motor Vehicle License	\$42,446	\$69,286
Personal Tax: Property Taxes	\$17,531	\$28,617
Personal Tax: Other Tax (Fish/Hunt)	\$3,182	\$5,194
Total State and Local Tax Impacts	<u>\$4,480,426</u>	<u>\$10,171,937</u>

Table B66. Federal Tax Impacts of Recycled Paper Manuf. Activities (2018 dollars)

Description	Buildout	Operation and Maintenance
Social Ins Tax- Employee Contribution	\$2,734,378	\$4,470,698
Social Ins Tax- Employer Contribution	\$2,497,314	\$4,095,745
Tax on Production and Imports: Excise Taxes	\$346,718	\$812,683
Tax on Production and Imports: Custom Duty	\$130,536	\$305,967
Tax on Production and Imports: Fed NonTaxes	\$21,195	\$49,680
Corporate Profits Tax	\$1,497,206	\$3,145,726
Personal Tax: Income Tax	\$4,257,227	\$6,949,231
Total Federal Tax Impacts	<u>\$11,484,574</u>	<u>\$19,829,729</u>

Table B67. Total Economic Impacts Associated with Concrete Remanufacturing Activities

Activity	Impact Type	Employment	Labor Income	Gross State Product	Industry Output
		Jobs	----- 2018 dollars -----		
Buildout	Direct Effect	35.5	\$1,756,582	\$2,424,135	\$4,896,575
	Indirect Effect	8.2	\$488,166	\$793,064	\$1,494,036
	Induced Effect	59.1	\$2,835,379	\$4,758,357	\$8,120,350
	<u>Total Effect</u>	<u>102.8</u>	<u>\$5,080,127</u>	<u>\$7,975,556</u>	<u>\$14,510,961</u>
Operation and Maintenance	Direct Effect	25.0	\$1,331,726	\$2,083,055	\$5,688,607
	Indirect Effect	20.4	\$1,109,399	\$1,710,242	\$3,257,823
	Induced Effect	69.2	\$3,329,358	\$5,573,928	\$9,500,174
	<u>Total Effect</u>	<u>114.6</u>	<u>\$5,770,482</u>	<u>\$9,367,225</u>	<u>\$18,446,604</u>

Table B68. State and Local Tax Impacts of Concrete Remanufacturing Activities (2018 dollars)

Description	Buildout	Operation and Maintenance
Dividends	\$2,125	\$2,629
Social Ins Tax- Employee Contribution	\$1,906	\$2,182
Social Ins Tax- Employer Contribution	\$3,851	\$4,409
Tax on Production and Imports: Sales Tax	\$228,739	\$289,740
Tax on Production and Imports: Property Tax	\$148,615	\$188,248
Tax on Production and Imports: Motor Vehicle Lic	\$3,527	\$4,468
Tax on Production and Imports: Severance Tax	\$256	\$325
Tax on Production and Imports: Other Taxes	\$33,413	\$42,323
Tax on Production and Imports: S/L NonTaxes	\$14,318	\$18,136
Corporate Profits Tax	\$18,034	\$22,314
Personal Tax: Income Tax	\$0	\$0
Personal Tax: NonTaxes (Fines- Fees	\$31,950	\$36,268
Personal Tax: Motor Vehicle License	\$4,710	\$5,346
Personal Tax: Property Taxes	\$1,945	\$2,208
Personal Tax: Other Tax (Fish/Hunt)	\$353	\$401
Total State and Local Tax Impacts	<u>\$493,742</u>	<u>\$618,997</u>

Table B69. Federal Tax Impacts of Concrete Remanufacturing Activities (2018 dollars)

Description	Buildout	Operation and Maintenance
Social Ins Tax- Employee Contribution	\$303,660	\$345,715
Social Ins Tax- Employer Contribution	\$277,801	\$318,039
Tax on Production and Imports: Excise Taxes	\$38,146	\$48,318
Tax on Production and Imports: Custom Duty	\$14,361	\$18,191
Tax on Production and Imports: Fed NonTaxes	\$2,332	\$2,954
Corporate Profits Tax	\$168,214	\$208,132
Personal Tax: Income Tax	\$472,358	\$536,199
Total Federal Tax Impacts	<u>\$1,276,872</u>	<u>\$1,477,549</u>

Table B70. Total Economic Impacts Associated with Furniture Remanufacturing/Refurbishing Activities

Activity	Impact Type	Employment	Labor Income	Gross State Product	Industry Output
		Jobs	----- 2018 dollars -----		
Buildout	Direct Effect	49.6	\$2,404,870	\$3,352,474	\$6,564,631
	Indirect Effect	10.6	\$627,333	\$1,024,910	\$1,937,106
	Induced Effect	80.2	\$3,848,516	\$6,459,205	\$11,024,771
	<u>Total Effect</u>	<u>140.3</u>	<u>\$6,880,718</u>	<u>\$10,836,589</u>	<u>\$19,526,508</u>
Operation and Maintenance	Direct Effect	13	\$507,332	\$606,864	\$1,606,754
	Indirect Effect	4	\$232,221	\$365,049	\$730,135
	Induced Effect	18.4	\$881,209	\$1,477,524	\$2,516,751
	<u>Total Effect</u>	<u>35.4</u>	<u>\$1,620,763</u>	<u>\$2,449,437</u>	<u>\$4,853,640</u>

Table B71. State and Local Tax Impacts of Furniture Remanufacturing/Refurbishing Activities (2018 dollars)

Description	Buildout	Operation and Maintenance
Dividends	\$2,913	\$582
Social Ins Tax- Employee Contribution	\$2,588	\$600
Social Ins Tax- Employer Contribution	\$5,228	\$1,212
Tax on Production and Imports: Sales Tax	\$307,125	\$79,597
Tax on Production and Imports: Property Tax	\$199,544	\$51,715
Tax on Production and Imports: Motor Vehicle Lic	\$4,736	\$1,227
Tax on Production and Imports: Severance Tax	\$344	\$89
Tax on Production and Imports: Other Taxes	\$44,863	\$11,627
Tax on Production and Imports: S/L NonTaxes	\$19,224	\$4,982
Corporate Profits Tax	\$24,725	\$4,938
Personal Tax: Income Tax	\$0	\$0
Personal Tax: NonTaxes (Fines- Fees	\$43,266	\$10,205
Personal Tax: Motor Vehicle License	\$6,378	\$1,504
Personal Tax: Property Taxes	\$2,634	\$621
Personal Tax: Other Tax (Fish/Hunt)	\$478	\$113
Total State and Local Tax Impacts	<u>\$664,045</u>	<u>\$169,013</u>

Table B72. Federal Tax Impacts of Furniture Remanufacturing/Refurbishing Activities (2018 dollars)

Description	Buildout	Operation and Maintenance
Social Ins Tax- Employee Contribution	\$411,572	\$96,504
Social Ins Tax- Employer Contribution	\$377,153	\$87,445
Tax on Production and Imports: Excise Taxes	\$51,218	\$13,274
Tax on Production and Imports: Custom Duty	\$19,283	\$4,998
Tax on Production and Imports: Fed NonTaxes	\$3,131	\$811
Corporate Profits Tax	\$230,617	\$46,059
Personal Tax: Income Tax	\$639,655	\$150,868
Total Federal Tax Impacts	<u>\$1,732,629</u>	<u>\$399,958</u>

Appendix C: Alachua County Model Results

Table C1. Total Economic Impacts of Site Development Activities

Activity	Impact Type	Employment	Labor Income	Gross State Product	Industry Output
		Jobs	----- 2018 dollars -----		
Site Preparation	Direct Effect	17.8	\$706,058	\$1,104,715	\$2,463,972
	Indirect Effect	4.4	\$197,026	\$324,138	\$637,996
	Induced Effect	16.7	\$771,175	\$1,240,107	\$1,966,463
	<u>Total Effect</u>	<u>38.9</u>	<u>\$1,674,259</u>	<u>\$2,668,961</u>	<u>\$5,068,431</u>
Materials Storage Facility and Incubator	Direct Effect	9.3	\$370,960	\$549,064	\$1,144,360
	Indirect Effect	1.4	\$71,818	\$117,073	\$234,667
	Induced Effect	7.8	\$358,761	\$578,241	\$918,411
	<u>Total Effect</u>	<u>18.6</u>	<u>\$801,539</u>	<u>\$1,244,379</u>	<u>\$2,297,438</u>
Engineering Services	Direct Effect	0.4	\$26,749	\$27,120	\$60,995
	Indirect Effect	0.2	\$8,962	\$12,730	\$24,321
	Induced Effect	0.5	\$21,600	\$35,369	\$56,764
	<u>Total Effect</u>	<u>1.1</u>	<u>\$57,311</u>	<u>\$75,219</u>	<u>\$142,080</u>
TOTAL	Direct Effect	27.5	\$1,103,767	\$1,680,899	\$3,669,327
	Indirect Effect	6	\$277,806	\$453,941	\$896,984
	Induced Effect	25	\$1,151,536	\$1,853,717	\$2,941,638
	<u>Total Effect</u>	<u>58.6</u>	<u>\$2,533,109</u>	<u>\$3,988,559</u>	<u>\$7,507,949</u>

Table C2. State and Local Tax Impacts of Site Development Activities (2018 dollars)

Description	Site Preparation	Materials Storage Facility and Incubator	Engineering Services	TOTAL
Dividends	\$1,121	\$495	\$18	\$1,634
Social Ins Tax- Employee Contribution	\$1,732	\$851	\$61	\$2,644
Social Ins Tax- Employer Contribution	\$3,500	\$1,720	\$122	\$5,342
Tax on Production and Imports: Sales Tax	\$72,342	\$33,709	\$1,948	\$107,999
Tax on Production and Imports: Property Tax	\$48,825	\$22,751	\$1,315	\$72,891
Tax on Production and Imports: Motor Vehicle Lic	\$1,218	\$568	\$33	\$1,819
Tax on Production and Imports: Severance Tax	\$89	\$41	\$2	\$132
Tax on Production and Imports: Other Taxes	\$9,115	\$4,247	\$245	\$13,607
Tax on Production and Imports: S/L NonTaxes	\$2,239	\$1,044	\$60	\$3,343
Corporate Profits Tax	\$7,127	\$3,146	\$117	\$10,390
Personal Tax: Income Tax	\$0	\$0	\$0	\$0
Personal Tax: NonTaxes (Fines- Fees	\$9,774	\$4,661	\$333	\$14,768
Personal Tax: Motor Vehicle License	\$1,380	\$658	\$47	\$2,085
Personal Tax: Property Taxes	\$542	\$258	\$18	\$818
Personal Tax: Other Tax (Fish/Hunt)	\$101	\$48	\$3	\$152
Total State and Local Tax Impacts	<u>\$159,104</u>	<u>\$74,198</u>	<u>\$4,323</u>	<u>\$237,625</u>

Table C3. Federal Tax Impacts of Site Development Activities (2018 dollars)

Description	Site Preparation	Materials Storage Facility and Incubator	Engineering Services	TOTAL
Social Ins Tax- Employee Contribution	\$12,098	\$44,098	\$3,150	\$59,346
Social Ins Tax- Employer Contribution	\$4,555	\$41,048	\$2,922	\$48,525
Tax on Production and Imports: Excise Taxes	\$740	\$5,637	\$326	\$6,703
Tax on Production and Imports: Custom Duty	\$66,478	\$2,122	\$123	\$68,723
Tax on Production and Imports: Fed NonTaxes	\$138,292	\$345	\$20	\$138,657
Corporate Profits Tax	\$397,233	\$29,348	\$1,091	\$427,672
Personal Tax: Income Tax	\$83,509	\$65,948	\$4,719	\$154,176
Total Federal Tax Impacts	<u>\$91,562</u>	<u>\$188,545</u>	<u>\$12,350</u>	<u>\$292,457</u>

Table C4. Total Economic Impacts of Tenant Buildout Activities

Activity	Impact Type	Employment	Labor Income	Gross State Product	Industry Output
		Jobs	----- 2018 dollars -----		
Low Scenario	Direct Effect	638.9	\$26,761,201	\$38,075,794	\$75,280,364
	Indirect Effect	75	\$3,791,895	\$6,473,095	\$12,503,685
	Induced Effect	514.4	\$23,739,347	\$38,399,695	\$61,163,703
	<u>Total Effect</u>	<u>1228.3</u>	<u>\$54,292,444</u>	<u>\$82,948,584</u>	<u>\$148,947,751</u>
High Scenario	Direct Effect	494	\$20,824,438	\$29,536,923	\$58,136,630
	Indirect Effect	56.8	\$2,868,994	\$4,921,106	\$9,468,517
	Induced Effect	397.5	\$18,346,151	\$29,684,795	\$47,294,915
	<u>Total Effect</u>	<u>948.2</u>	<u>\$42,039,584</u>	<u>\$64,142,825</u>	<u>\$114,900,061</u>

Table C5. State and Local Tax Impacts of Tenant Buildout Activities (2018 dollars)

Description	Low Scenario	High Scenario
Dividends	\$32,709	\$25,272
Social Ins Tax- Employee Contribution	\$58,241	\$45,131
Social Ins Tax- Employer Contribution	\$117,673	\$91,188
Tax on Production and Imports: Sales Tax	\$1,933,992	\$1,475,571
Tax on Production and Imports: Property Tax	\$1,305,304	\$995,902
Tax on Production and Imports: Motor Vehicle Lic	\$32,564	\$24,847
Tax on Production and Imports: Severance Tax	\$2,367	\$1,807
Tax on Production and Imports: Other Taxes	\$243,690	\$185,927
Tax on Production and Imports: S/L NonTaxes	\$59,868	\$45,680
Corporate Profits Tax	\$207,976	\$160,704
Personal Tax: Income Tax	\$0	\$0
Personal Tax: NonTaxes (Fines- Fees	\$315,241	\$244,069
Personal Tax: Motor Vehicle License	\$44,500	\$34,452
Personal Tax: Property Taxes	\$17,473	\$13,528
Personal Tax: Other Tax (Fish/Hunt)	\$3,242	\$2,511
<u>Total State and Local Tax Impacts</u>	<u>\$4,374,842</u>	<u>\$3,346,587</u>

Table C6. Federal Tax Impacts of Tenant Buildout Activities (2018 dollars)

Description	Low Scenario	High Scenario
Social Ins Tax- Employee Contribution	\$2,993,635	\$2,318,445
Social Ins Tax- Employer Contribution	\$2,807,574	\$2,175,656
Tax on Production and Imports: Excise Taxes	\$323,428	\$246,766
Tax on Production and Imports: Custom Duty	\$121,767	\$92,905
Tax on Production and Imports: Fed NonTaxes	\$19,772	\$15,084
Corporate Profits Tax	\$1,939,870	\$1,498,943
Personal Tax: Income Tax	\$4,460,375	\$3,453,339
<u>Total Federal Tax Impacts</u>	<u>\$12,660,025</u>	<u>\$9,801,138</u>

Table C7. Total Economic Impacts of Tenant Operation and Maintenance Activities

Activity	Impact Type	Employment	Labor Income	Gross State Product	Industry Output
		Jobs	----- 2018 dollars -----		
Low Scenario	Direct Effect	488	\$25,932,051	\$42,536,092	\$147,863,606
	Indirect Effect	191	\$8,215,867	\$13,563,311	\$26,242,105
	Induced Effect	543	\$25,149,142	\$40,575,825	\$64,359,210
	<u>Total Effect</u>	<u>1,222</u>	<u>\$59,297,060</u>	<u>\$96,675,230</u>	<u>\$238,464,919</u>
High Scenario	Direct Effect	235	\$34,403,894	\$58,493,538	\$223,158,057
	Indirect Effect	338	\$13,604,761	\$22,760,068	\$50,431,286
	Induced Effect	682	\$31,284,464	\$50,886,519	\$81,203,966
	<u>Total Effect</u>	<u>1,255</u>	<u>\$79,293,119</u>	<u>\$132,140,125</u>	<u>\$354,793,309</u>

Table C8. State and Local Tax Impacts of Tenant Operation and Maintenance Activities (2018 dollars)

Description	Low Scenario	High Scenario
Dividends	\$39,668	\$56,878
Social Ins Tax- Employee Contribution	\$59,587	\$84,541
Social Ins Tax- Employer Contribution	\$120,395	\$170,813
Tax on Production and Imports: Sales Tax	\$2,792,922	\$4,804,471
Tax on Production and Imports: Property Tax	\$1,885,016	\$3,242,663
Tax on Production and Imports: Motor Vehicle Lic	\$47,027	\$80,902
Tax on Production and Imports: Severance Tax	\$3,420	\$5,883
Tax on Production and Imports: Other Taxes	\$351,918	\$605,380
Tax on Production and Imports: S/L NonTaxes	\$86,461	\$148,732
Corporate Profits Tax	\$252,245	\$361,682
Personal Tax: Income Tax	\$0	\$0
Personal Tax: NonTaxes (Fines- Fees	\$327,309	\$460,834
Personal Tax: Motor Vehicle License	\$46,198	\$65,049
Personal Tax: Property Taxes	\$18,138	\$25,543
Personal Tax: Other Tax (Fish/Hunt)	\$3,366	\$4,741
<u>Total State and Local Tax Impacts</u>	<u>\$6,033,682</u>	<u>\$10,118,113</u>

Table C9. Federal Tax Impacts of Tenant Operation and Maintenance Activities (2018 dollars)

Description	Low Scenario	High Scenario
Social Ins Tax- Employee Contribution	\$3,093,146	\$4,366,015
Social Ins Tax- Employer Contribution	\$2,872,514	\$4,075,439
Tax on Production and Imports: Excise Taxes	\$467,073	\$706,172
Tax on Production and Imports: Custom Duty	\$175,848	\$265,867
Tax on Production and Imports: Fed NonTaxes	\$28,551	\$43,169
Corporate Profits Tax	\$2,352,765	\$2,765,662
Personal Tax: Income Tax	\$4,631,097	\$6,520,356
<u>Total Federal Tax Impacts</u>	<u>\$13,620,997</u>	<u>\$18,742,680</u>

Table C10. Total Economic Impacts of Operation and Maintenance Activities by Tenant, rank ordered by Total Employment Impacts (2018 dollars)

Activity	Employment Jobs	Labor Income ----- 2018 dollars	Gross State Product ----- 2018 dollars	Industry Output (Revenues) ----- 2018 dollars
Recycled Paper Manufacturing	644	\$34,010,140	\$62,677,386	\$169,767,781
Non-cellulosic fibers	612	\$45,282,979	\$69,462,739	\$185,025,528
Manufacturer of steel castings	313	\$18,836,094	\$27,803,269	\$55,474,931
Iron foundries and miscellaneous users	313	\$18,836,094	\$27,803,269	\$55,474,931
Secondary aluminum smelters	258	\$12,252,785	\$20,990,920	\$77,112,884
Electronics Refurbishers, Remanufacturers, Resellers (General)	239	\$13,659,793	\$28,686,447	\$86,242,228
Electronics Refurbishers, Remanufacturers, Resellers (Telephone)	219	\$12,011,600	\$22,792,891	\$61,266,223
Liquid Fuels	202	\$10,089,021	\$24,582,965	\$155,393,510
Electronics Refurbishers, Remanufacturers, Resellers (Broadcasting and Wireless)	193	\$9,941,812	\$16,246,224	\$38,270,628
Food and non-food bottles	178	\$10,653,222	\$20,426,470	\$47,901,704
Pipe manufacturing	164	\$8,338,131	\$15,925,164	\$39,302,324
Electronics Refurbishers, Remanufacturers, Resellers (A&V)	151	\$5,253,485	\$9,735,886	\$31,834,851
Industrial Rubber Compounds	148	\$7,317,102	\$12,317,330	\$28,947,444
Sheet and film	146	\$7,319,397	\$13,065,280	\$37,739,462
Lawn and garden products	129	\$6,460,895	\$10,450,701	\$23,744,959
Sheet, film, and strapping	119	\$6,028,548	\$10,846,589	\$32,349,178
Other plastic products manufacturing	115	\$5,236,913	\$7,794,677	\$20,836,420
Mattress and Carpet Materials Recovery	92	\$4,757,921	\$7,391,063	\$13,653,119
Aluminum foundries	84	\$3,612,260	\$5,489,174	\$14,291,827
Concrete Remanufacturing	75	\$3,798,513	\$6,002,549	\$12,055,736
Processing of Electronic Scrap and E-waste	62	\$3,171,947	\$4,927,375	\$9,102,080
Furniture Remanufacturing	46	\$3,712,995	\$4,766,998	\$7,333,537
Storage and Resale of Recovered Building Materials	45	\$2,151,291	\$3,148,502	\$5,210,994
Recycled Glass Processing	9	\$475,792	\$739,106	\$1,365,311