

ACT is applying for Federal grants to maximize funding opportunity for conservation efforts in Alachua County.

County Comprehensive Plan 2019-2040:

- Future Land Use Element 6.0 Rural and Agricultural Policies, Objective 6.1 Policy 6.1.1, states:

"The County shall encourage productive agricultural uses..." "...for purchase of agricultural conservation easements and purchase of development rights." with the "...use of **state and federal incentives**."

- Conservation and Open Space Element 6.0, Objective 6.4 Other Acquisition Program, Policy 6.4.1 and 6.4.2 state:

"The County shall seek to maximize the effectiveness of local revenue sources by using them to leverage funds available from **federal, state... programs...**" "The County shall provide support, in the form of information, coordination, assistance in obtaining grants, and other support activities to organizations and agencies that acquire and protect natural areas and open space for conservation."

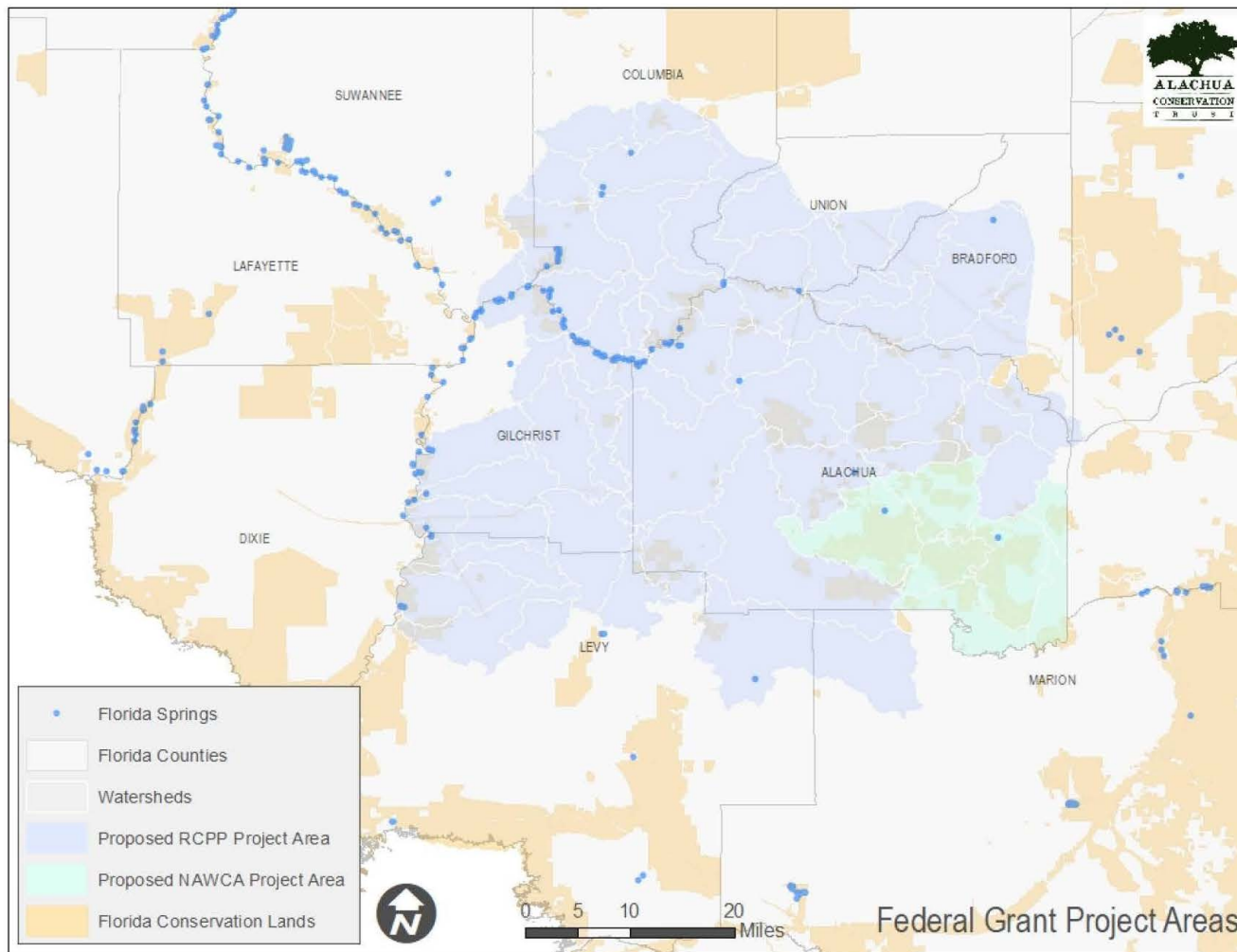




The **Regional Conservation Partnership Program (RCPP)** awards Farm Bill federal cash through the Natural Resources Conservation Service to protect non-industrial farm land.

The **North American Wetlands Conservation Act (NAWCA) grant** awards federal cash through the U.S. Fish and Wildlife Service to protect wetland habitat.

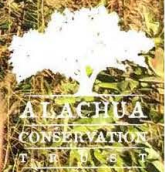




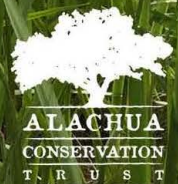



Both applications require evidence that an award will compliment existing conservation efforts in the region.

In support of our application, ACT is requesting formal acknowledgement from Alachua County of existing commitments to land and water protection, such as the Alachua County Forever Program.



- In these partnerships with Alachua County, federal grants could award,
NAWCA \$1M per phase each year
RCPP \$10M over five years
- The grants could also be used to leverage additional funding sources for Alachua County's land conservation programs.
- The acknowledgement by the County is not an obligation to any specific purchase or partnership. It is simply a commitment to continuing conservation work within the region for the remaining years of the ACF program.





ACT is requesting a motion that allows the County Manager to submit Partner Contribution Forms for ACT's applications to RCPP and NAWCA.

The form would briefly describe the goals of the County's conservation efforts and outline projected annual conservation purchases by Alachua County.

Thank you for your time!

