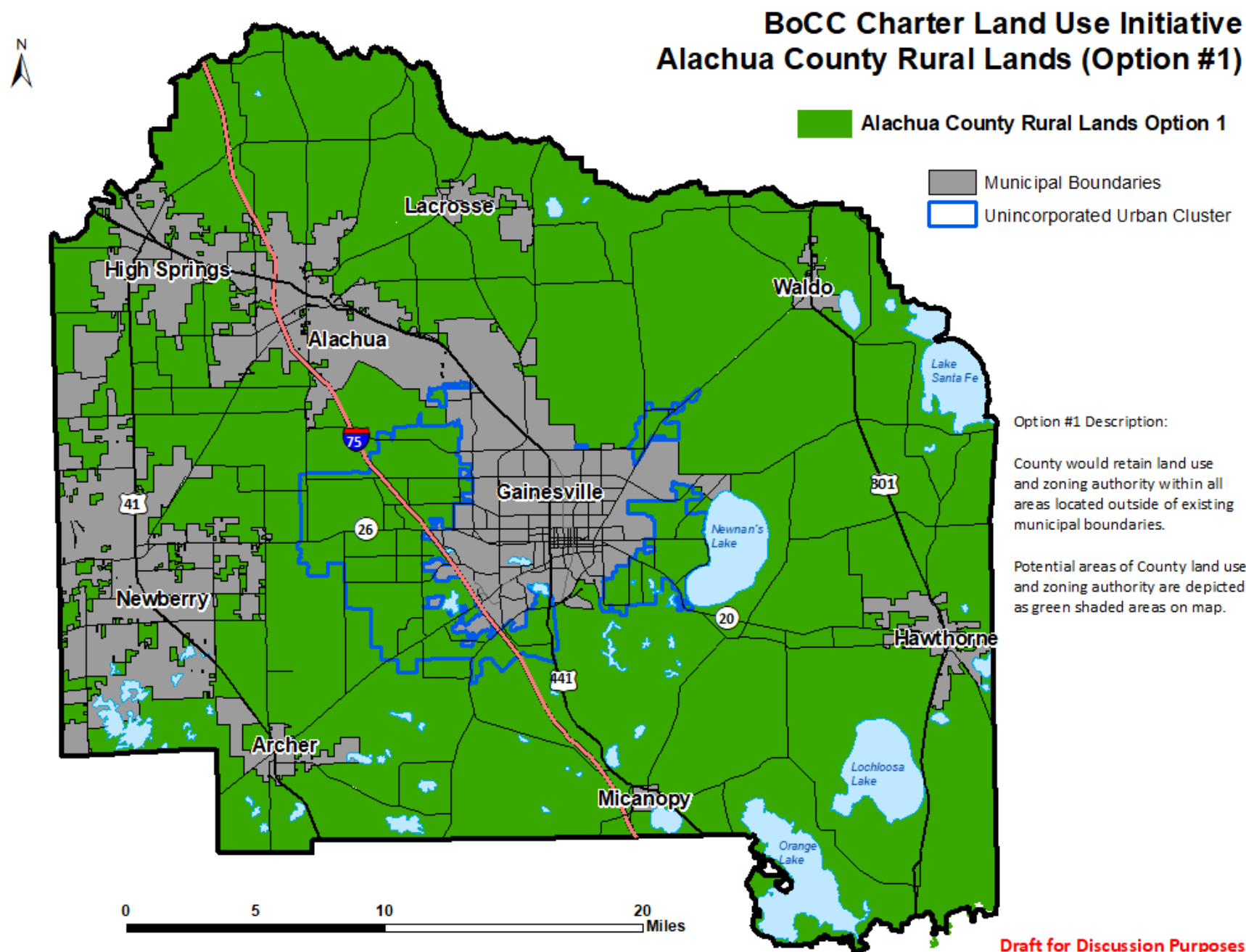


Map Option #1

County retains land use and zoning authority within all unincorporated areas outside of existing city boundaries.

Shown as green shaded areas on map



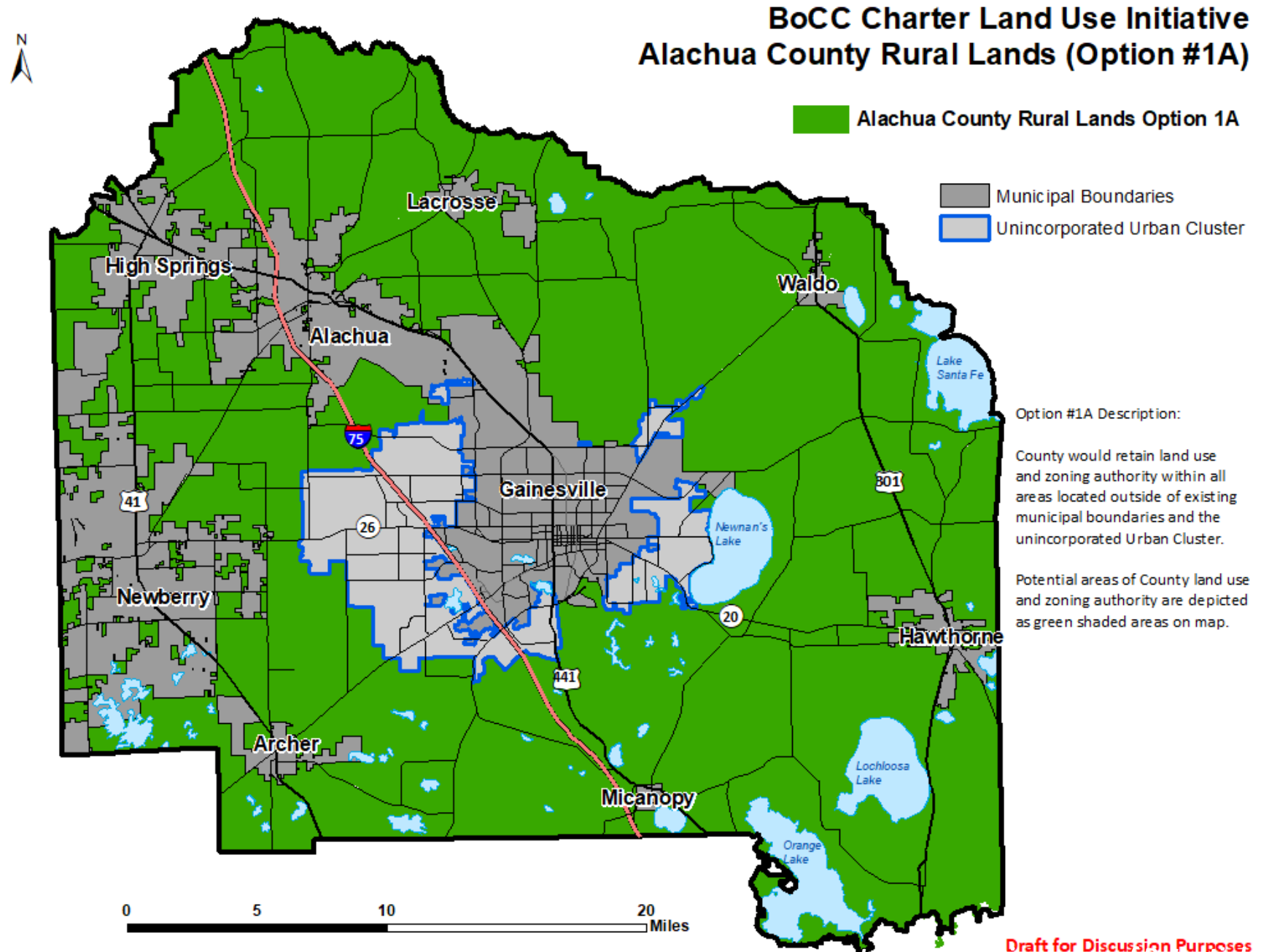
Draft for Discussion Purposes

Alachua County Growth Management Department
February 3, 2020

Map Option #1A

County retains land use and zoning authority within all unincorporated areas outside of existing city boundaries and the unincorporated Urban Cluster.

Shown as green shaded areas on map



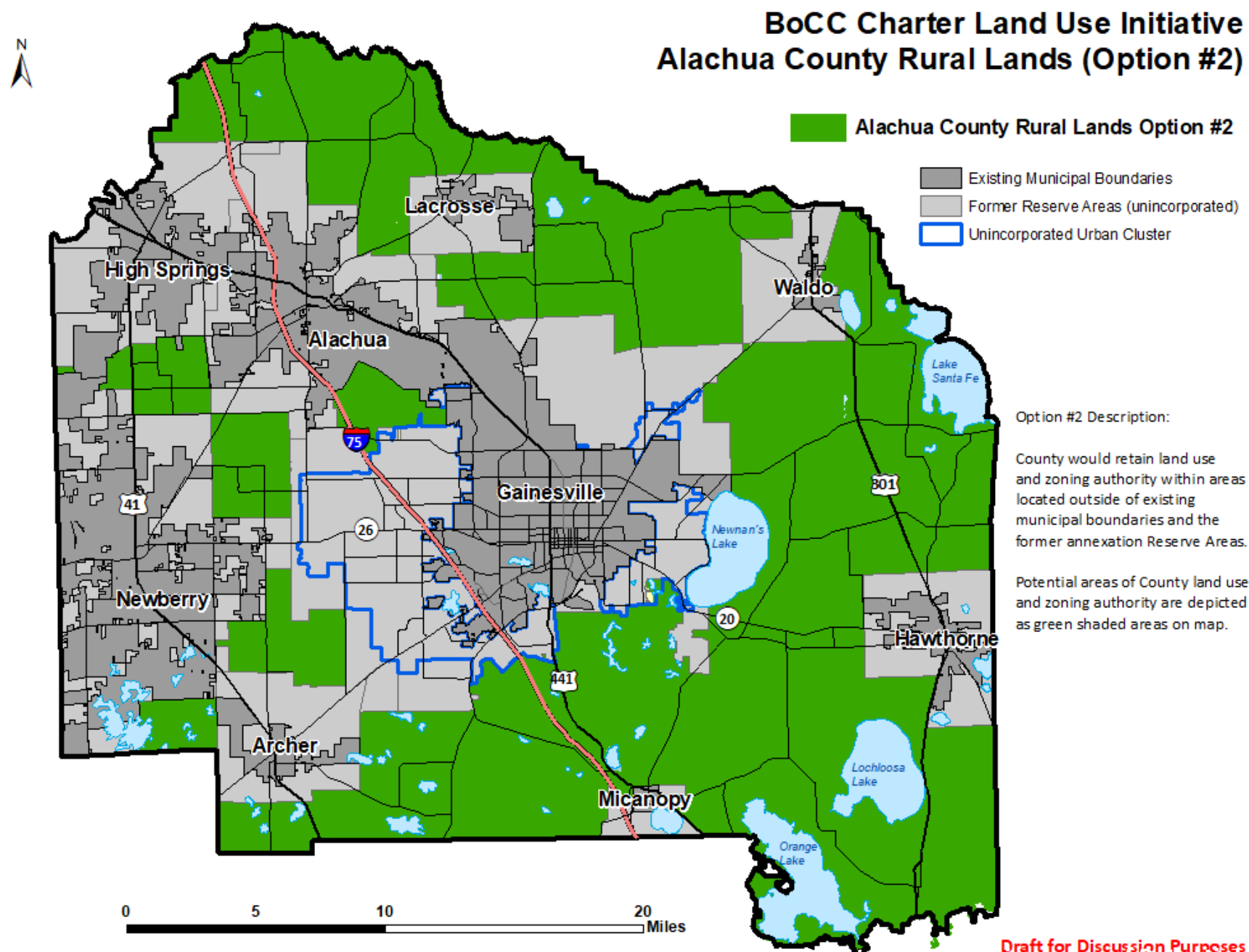
Draft for Discussion Purposes

Alachua County Growth Management Department
February 5, 2020

Map Option #2

County retains land use and zoning authority within all unincorporated areas outside of existing city boundaries and former Reserve Areas.

Shown as shaded green areas on map



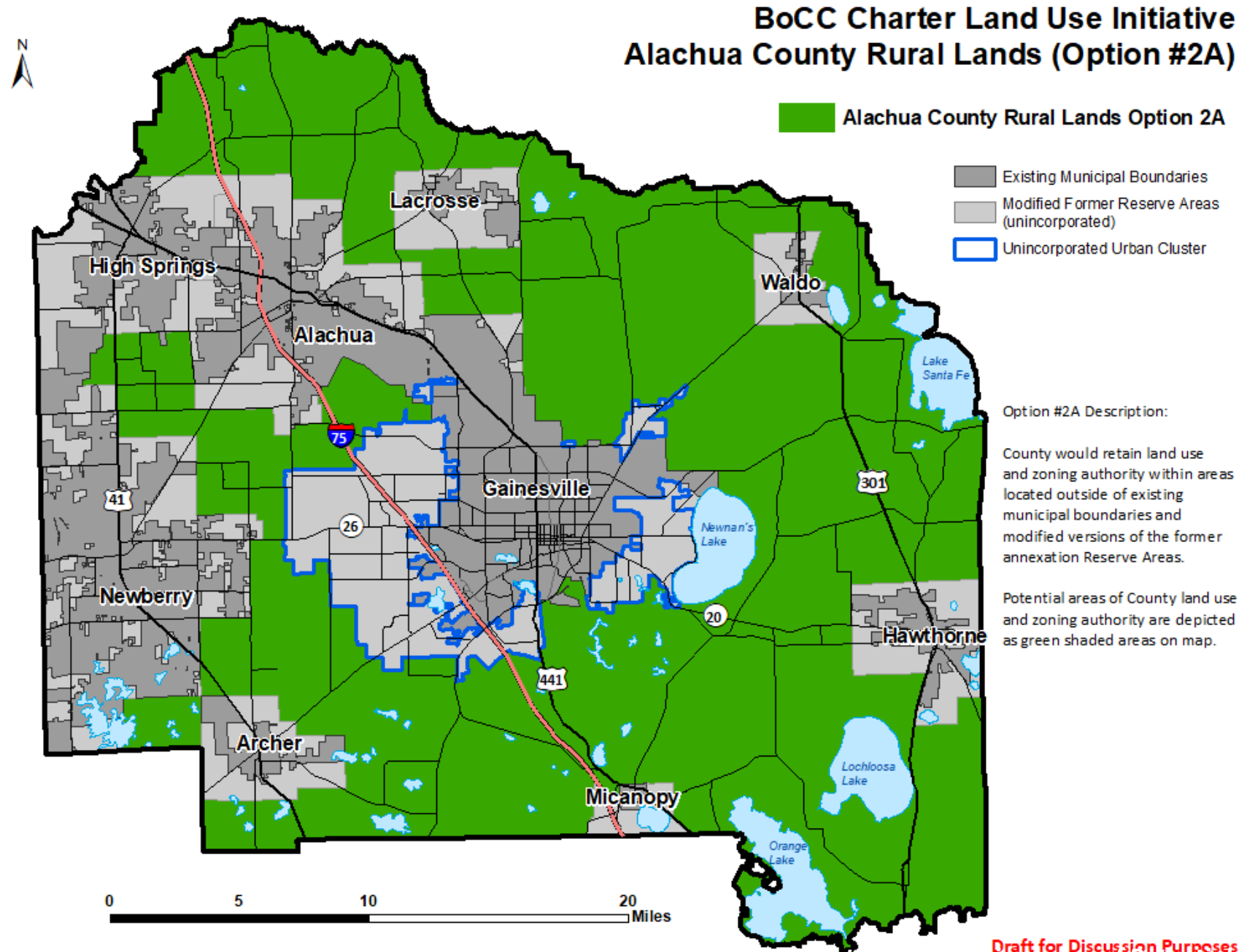
Draft for Discussion Purposes

Alachua County Growth Management Department
February 5, 2020

Map Option #2A

County retains land use and zoning authority within all unincorporated areas located outside of existing city boundaries and modified versions of former Reserve Areas.

Shown as shaded green areas on map



Draft for Discussion Purposes

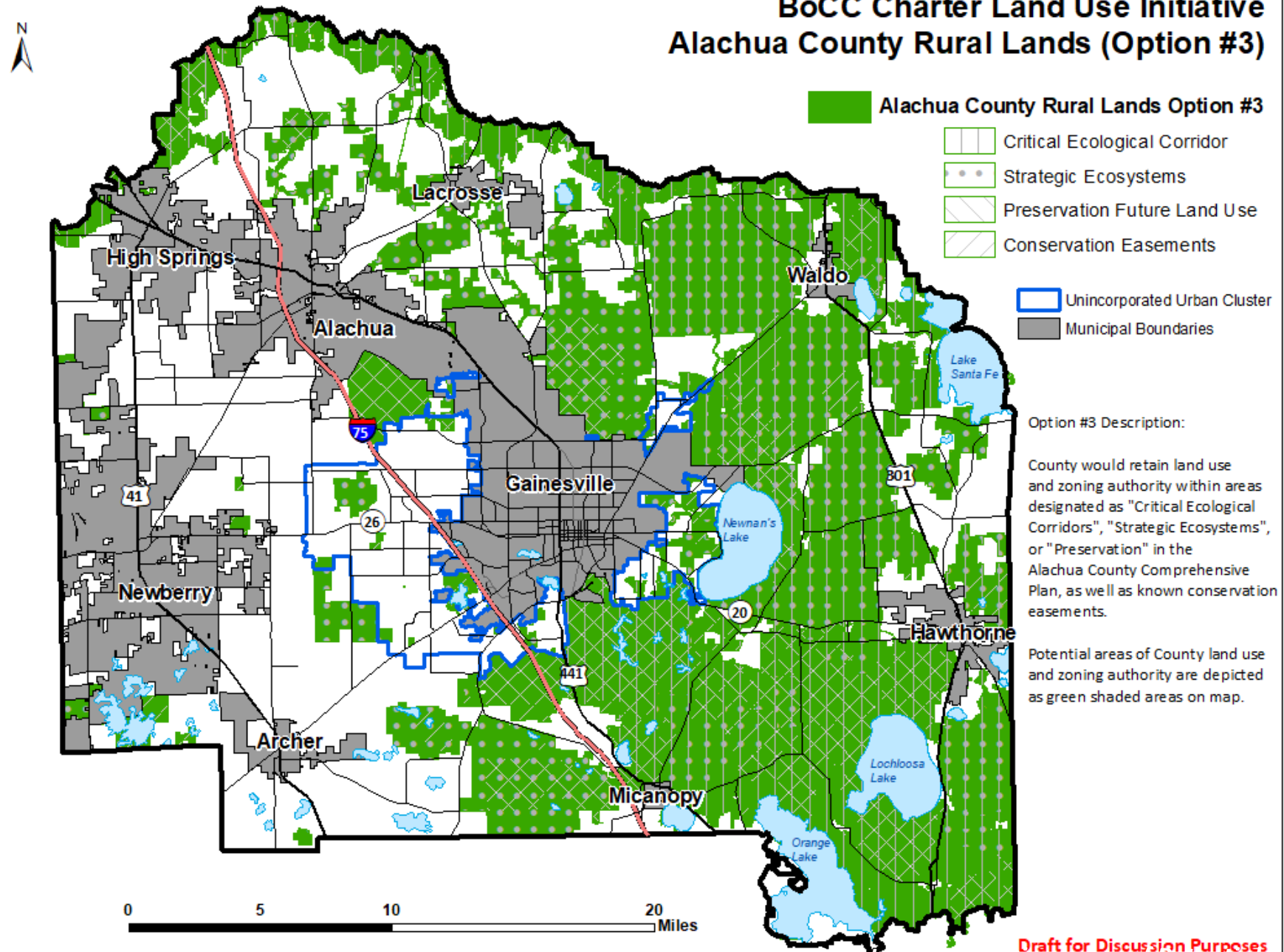
Alachua County Growth Management Department
February 5, 2020

Map Option #3

County retains land use and zoning jurisdiction within “Critical Ecological Corridors”, “Strategic Ecosystems”, and “Preservation” areas as designated in the Alachua County Comprehensive Plan, as well as within conservation easements.

Shown as shaded green areas on map

BoCC Charter Land Use Initiative Alachua County Rural Lands (Option #3)



Draft for Discussion Purposes

Alachua County Growth Management Department
February 5, 2020