



Tara St. Augustine


Revised Preliminary Development Plan

August 11, 2020

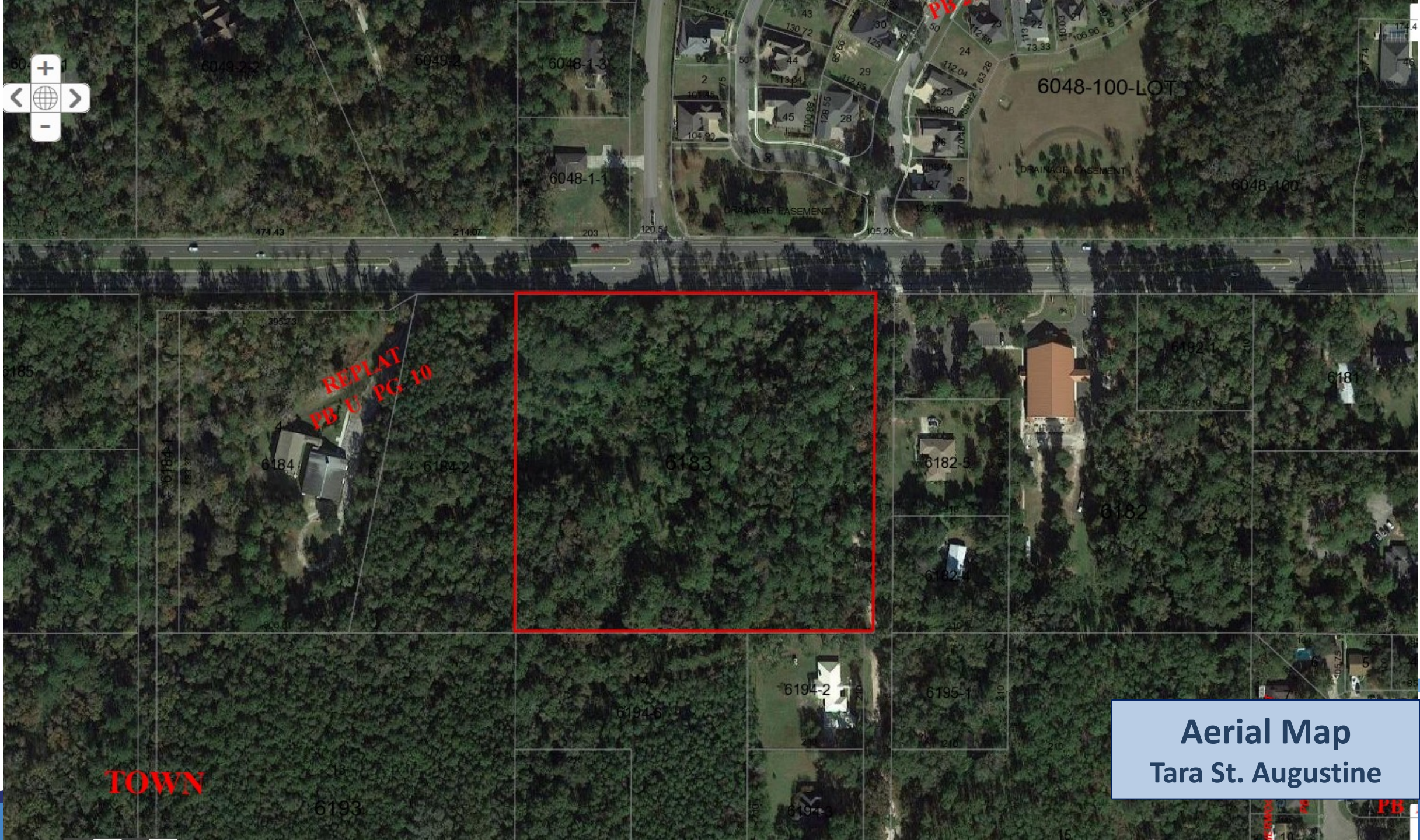
Leslie McLendon, Planner
Growth Management

Tara St. Augustine

Revised Preliminary Development Plan

- Previously approved 73-unit single-family residential attached subdivision. Changes are proposed to access.
 - Location: 3800 Block of NW 63rd Street
 - Future Land Use: Medium Density (4-8 du/acre)
 - Zoning District: R-2
- 





Aerial Map
Tara St. Augustine

Approved Preliminary Development Plan (2019)





Date Exported: 7/13/2020 1:52 PM

Adjacent Open Space Tara St. Augustine

PROPOSED
ADJACENT
DEVELOPMENT
(BY OTHERS)



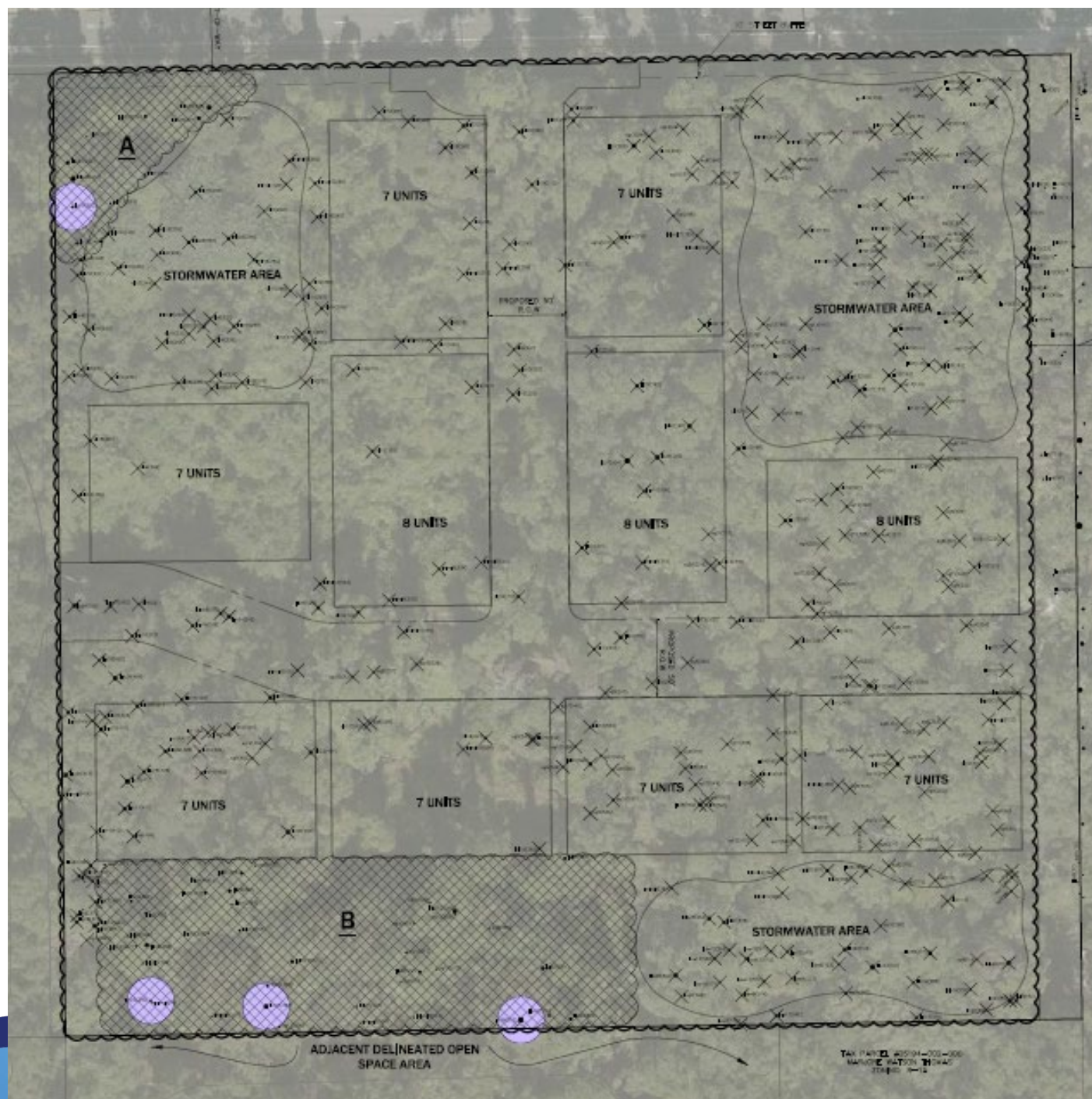
| OPEN SPACE/ENVIRONMENTAL RESOURCE DATA TABLE | | | |
|--|------------------|------------------|-------------------|
| PROJECT AREA (ACRES) | | 9.1 AC. | 100.00% |
| CONSERVATION OPEN SPACE TYPES | EXISTING (ACRES) | PROVIDED (ACRES) | % OF PROJECT AREA |
| LANDS | 0.00 AC. | 0.00 AC. | 0.00% |
| LAND BUFFERS | 0.00 AC. | 0.00 AC. | 0.00% |
| FACE WATERS | 0.00 AC. | 0.00 AC. | 0.00% |
| FACE WATER BUFFERS | 0.00 AC. | 0.00 AC. | 0.00% |
| IFRICANT GEOLOGICAL FEATURES | 0.00 AC. | 0.00 AC. | 0.00% |
| IFRICANT GEOLOGICAL FEATURE BUFFERS | 0.00 AC. | 0.00 AC. | 0.00% |
| ATEGIC ECOSYSTEM | 0.00 AC. | 0.00 AC. | 0.00% |
| ED SPECIES HABITAT | 0.00 AC. | 0.00 AC. | 0.00% |
| YEAR FLOODPLAIN (FEMA AREA) | 0.00 AC. | 0.00 AC. | 0.00% |
| IFRICANT HABITAT | 0.00 AC. | 0.00 AC. | 0.00% |
| -CONSERVATION OPEN SPACE | | PROVIDED | % TOTAL AREA |
| MUNITY GREEN SPACES | | 0.9 AC. | 10% |
| RWATER MANAGEMENT AREAS | | 0.00 AC. | 0% |
| DSCAPED AREAS (NON-RESIDENTIAL ONLY) | | 0.00 AC. | 0% |
| TOTAL OPEN SPACE PROVIDED (ACRES) | | 0.9 AC. | 10% |

APPROXIMATELY 0.28 AC. IS LOCATED WITHIN A MAPPED ISOLATED FEMA FLOOD ZONE AREA. HOWEVER, THIS AREA IS PROPOSED FOR MODIFICATION AND IS NOT PROPOSED AS OPEN SPACE.



NORTH

Open Space
Tara St. Augustine



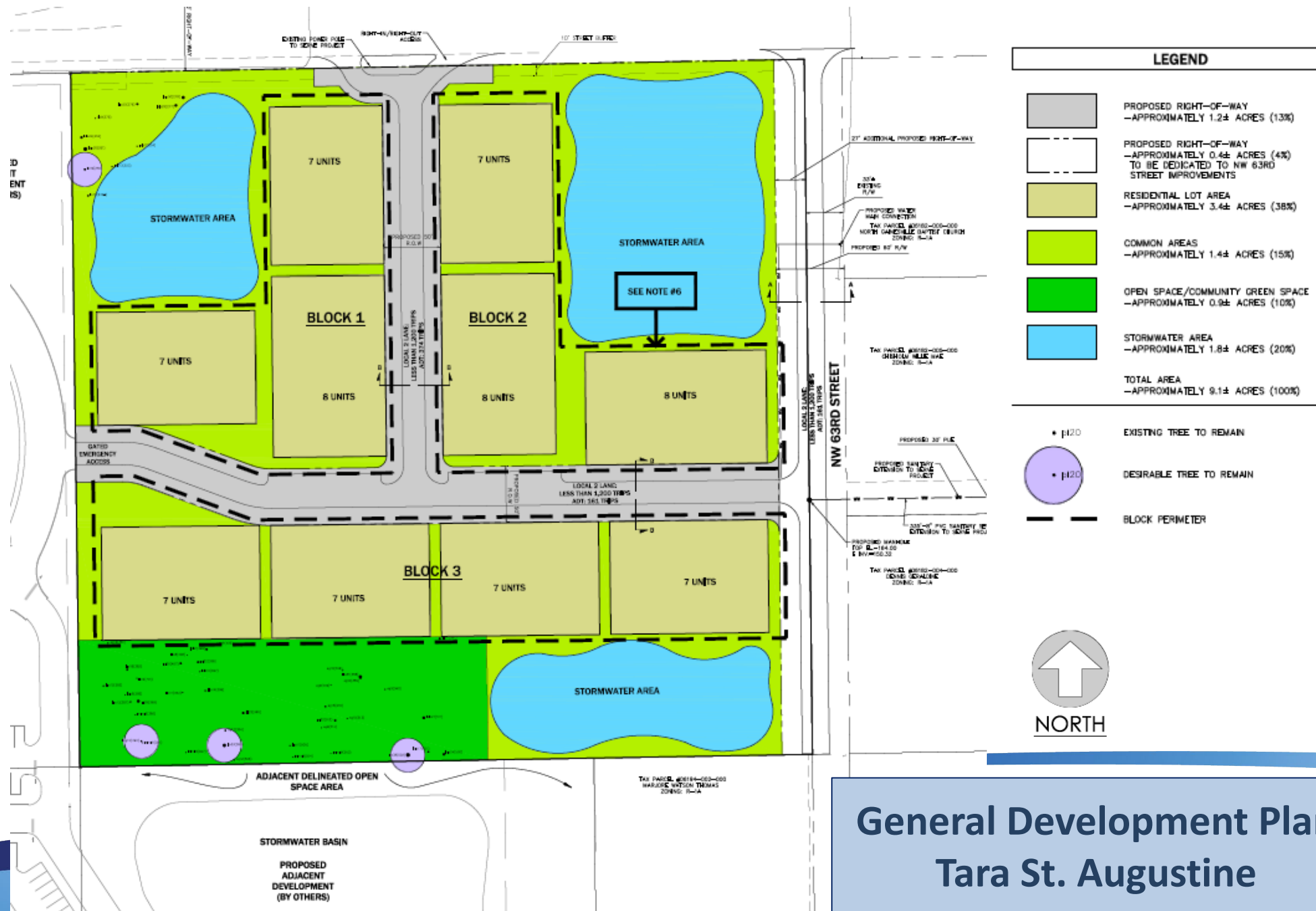
TREE CLEARING DATA

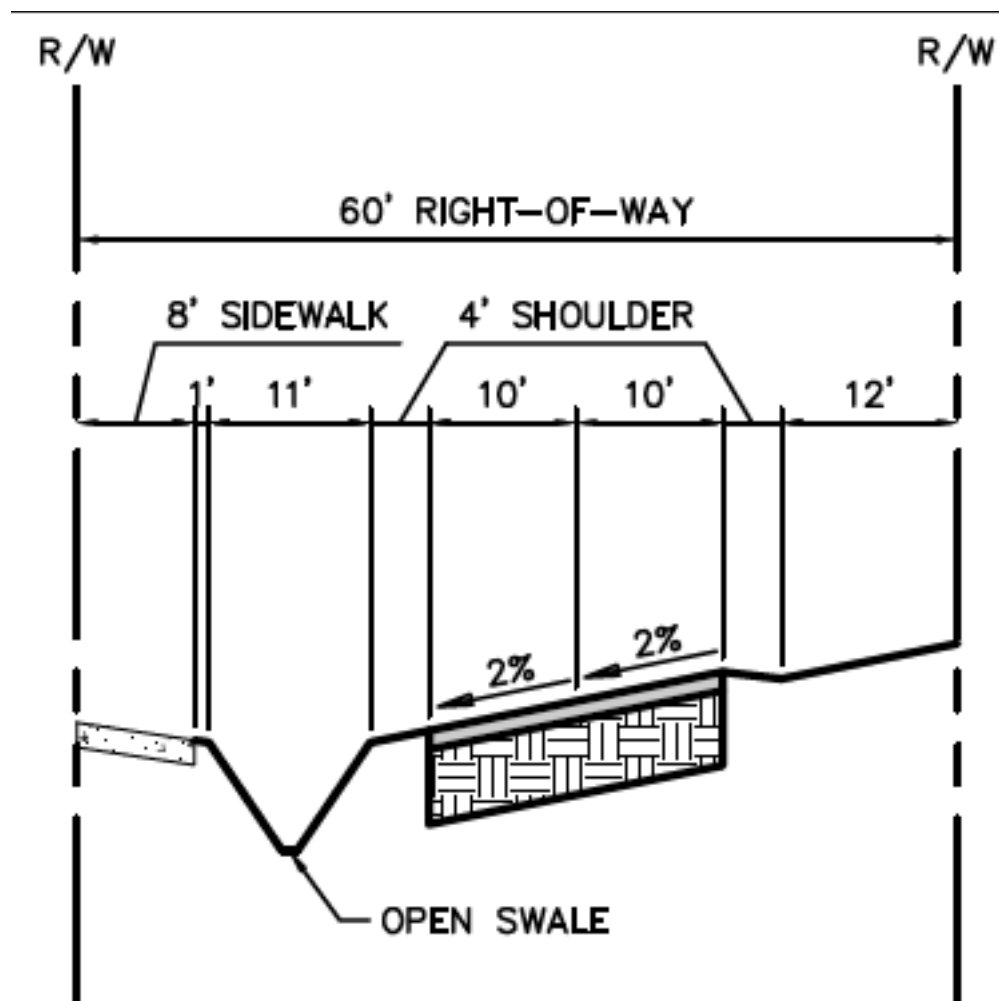
| | | |
|----------------------------|--------------|--------------------------|
| EXISTING CANOPY: | 381,940 S.F. | 100% OF SITE |
| EXISTING CANOPY TO REMAIN: | 45,950 S.F. | 12.0% OF EXISTING CANOPY |
| TREE AREA A: | 8,468 S.F. | 2.2% OF EXISTING CANOPY |
| TREE AREA B: | 37,482 S.F. | 9.8% OF EXISTING CANOPY |



NORTH

Tree Canopy
Tara St. Augustine





NW 63RD STREET IMPROVEMENTS

TYPICAL SECTION A-A

NW 63rd Street
Tara St. Augustine

Consistency Analysis

Proposed Revised Preliminary Development Plan is found to be consistent with:

- Comprehensive Plan
- Unified Land Development Code

Staff Recommendation

Staff recommends **approval** of the Revised Preliminary Development Plan for **Tara St. Augustine**

