

ACF Desktop Evaluation
Project Name: Lake Santa Fe
Parcel Name: Butler – 16993-002-000

Size:	1.01		Nominated By	Arthur C. Butler, Jr.
Parcel #'s	16993-002-000	1.01 ac	Acquisition Type	Fee Simple
			REPA Score	6.87 out of 9.44-Lake Santa Fe
			KBN Project/Score	17 of 47 projects
# Buildings	0		Elevation Range	169-175 ft
Just Value	\$1,000		Bald Eagle	N/A
Total Value (Just, Misc, Bld)	\$1,000		FWC Species Model	Alligator, eastern Indigo snake
Asking Price	N/A		FNAI Element Occurrence	N/A
FLU	Rural/Agriculture		FEMA 100 & 500 year flood plain	100% in 100 year floodplain
Zoning	Agriculture		Archaeological Sites	0 w/in a mile

Special Designations: ~28% of parcel included in Outstanding Florida Waters boundary

Land Cover: Mesic Flatwoods

Conservation Land Context: 1 acre parcel completely surrounded by Padgett property (under contract with ACF) and Santa Fe Swamp Conservation Area (managed by The Suwannee River Water Management District).

Other:

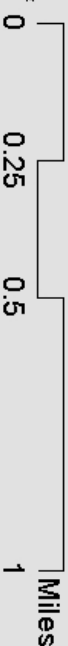
The mesic flatwoods natural community on this 1 acre parcel matches up with the surrounding habitat on the Santa Fe Swamp Conservation Area and on the Padgett parcel and is in good condition. With no evidence of any fire, the understory of saw palmetto, gallberry, and fetterbush is dense and overgrown. There were various oaks and bay trees in the midstory beneath a canopy of mature slash and loblolly pines. This area looks like it was cut-over in the 1940s and left to regenerate naturally with no signs of timber management since then.

Lake Santa Fe - Butler Location Map

Map 1



Legend	
	Butler Parcel (1 ac)
	ACF Active Acquisition List
	Lake Alto Preserve - North
	ACF Projects
	Lakes

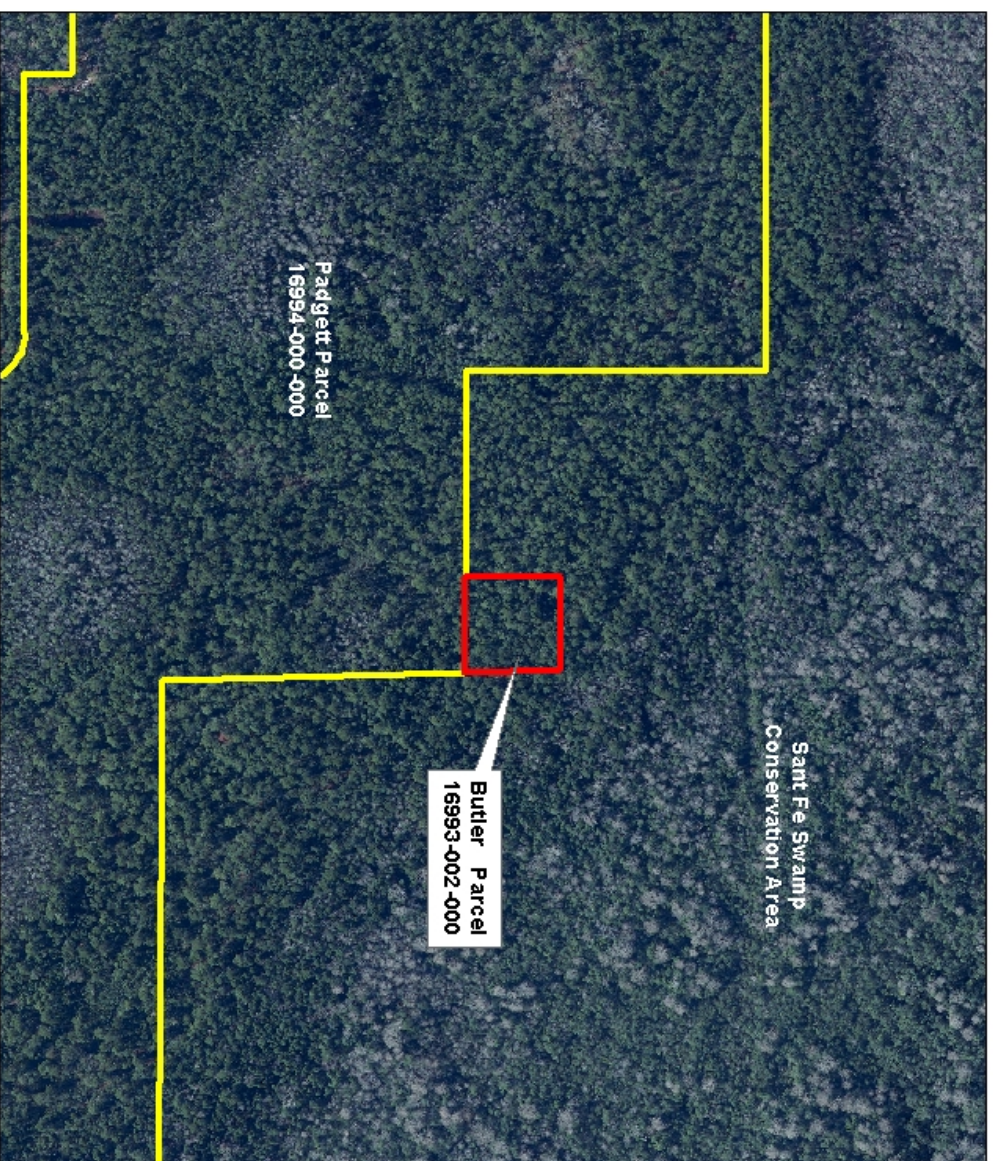


DISCLAIMER: This map and the digital data contained herein are a public resource to be used for reference purposes only. The Alachua County Environmental Protection Department provides the information as is without warranty of any kind. The quality of the data is dependent on the various sources from which each data layer is obtained.



Lake Santa Fe - Butler Aerial Map

Map 2



- Legend**
- Butler Parcel (1 ac)
 - Padgett Boundary



0 320 640 1,280 Feet

DISCLAIMER: This map and the spatial data it contains are made available as a public service. It is not intended for use as a reference for legal purposes only. The Alachua County Environmental Protection Department provides the information as is without warranty of any kind. The quality of the data is dependent on the various sources from which it was derived.