



GRACE

CAMPUS VISION

Project Components

Renovate Veteran Dorm

MONTHS 1 - 12

Establish Pet Kennel

MONTHS 5 - 12

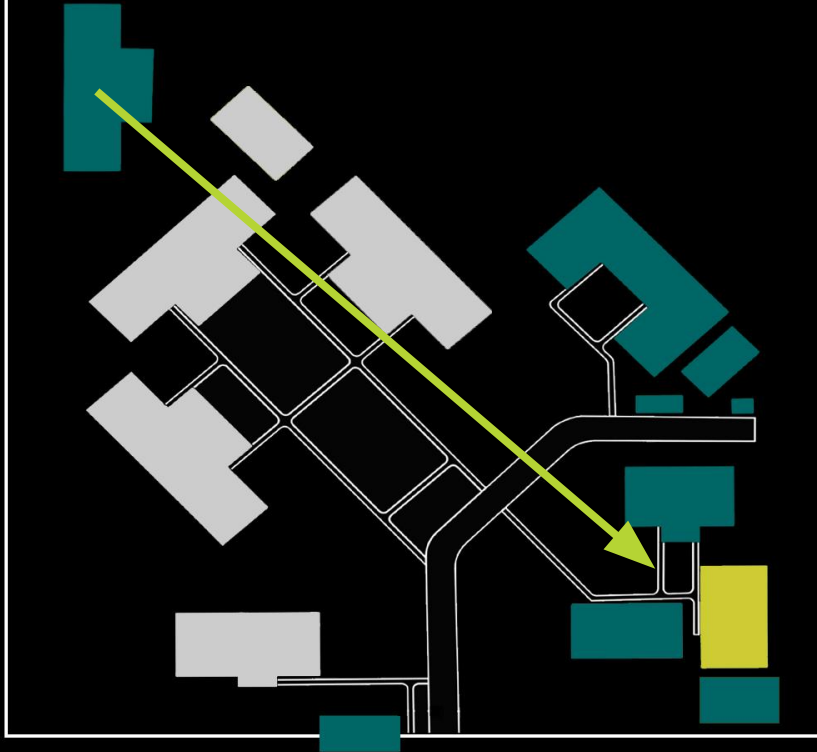
No New Entry to DV: Target 10/1

Fencing installed
90-day notice

Housing Engagement Begins

Dignity Village Closed: Target 1/1/2020

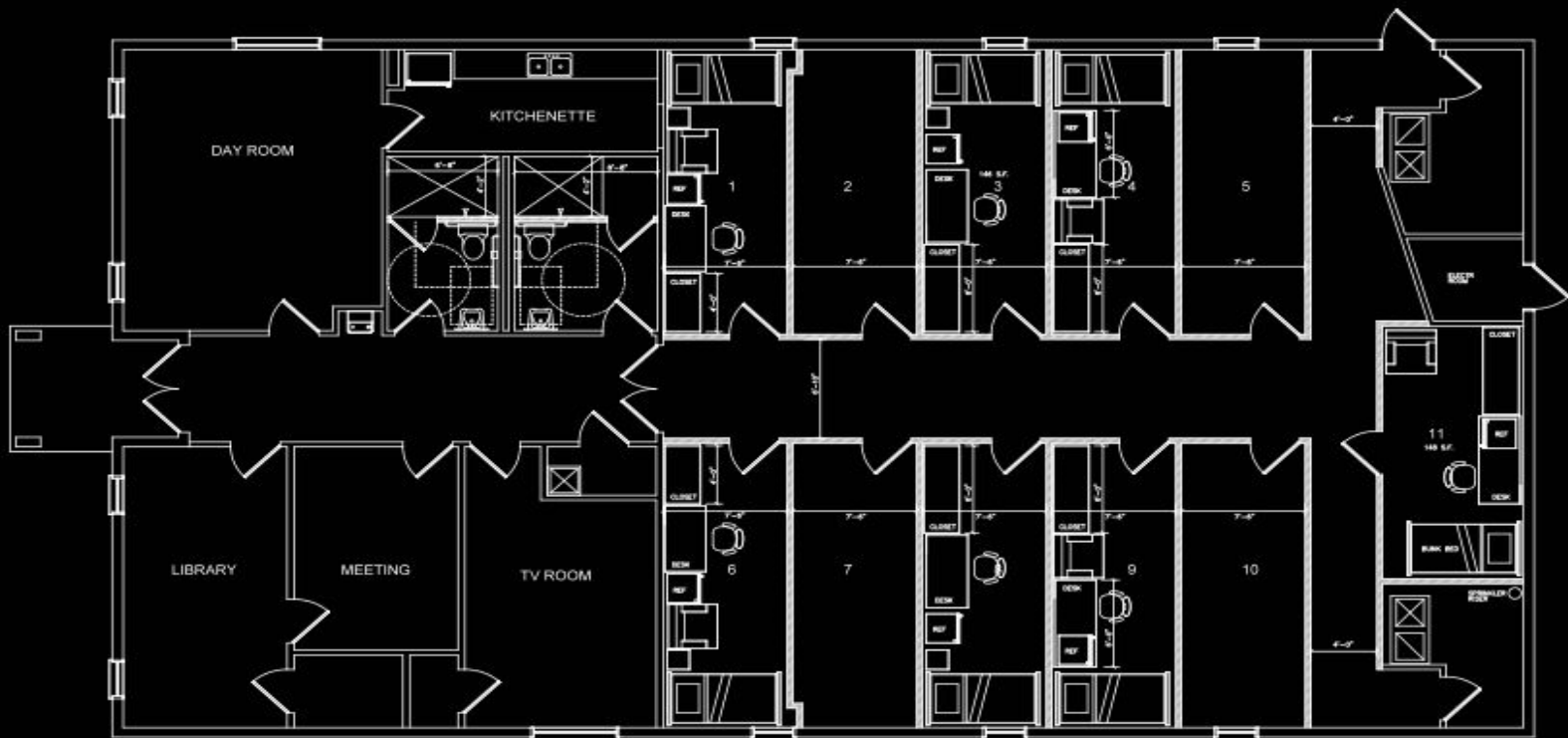
CAMPUS CHANGES



- **Veteran Program**
- Pavilion Closed
- 120 Indoor Shelter Beds
- Intake & Diversion
- Kennel Services
- Renter Education Training
- Donation Storage

Renovate Veteran Dorm

Project Components



RENOVATION FLOOR PLAN
1/4" = 1'-0"



6 months
50% reduction



12 months
80% reduction



18-24 months
100% reduction



Target: 1/1/2020

On-site campground opens
Dignity Village closed

Outreach & Engagement

Intensive Engagement / Housing Prioritization / Go Home Fund / Shelter Prioritization

Target: 10/1/2019

Fencing installed
No new entry
90-day notice

Startup

\$95,000

Campground setup, tents,
platforms, bunk beds,
outreach staff

Fencing & Security

\$66,000

Fence existing DV area, 24-hr
security for three months

Year 1 & 2

\$299,000

Housing Specialists (4 FTE),
Security, operational costs



REVISED PROJECT COSTS

Housing Specialists (4 FTE)

- Update contact information and VI-SPDAT scores
- Develop and monitor housing plan with campers
- Provide additional case management services
- Coordinate with outreach teams and mainstream resources

STAFFING

