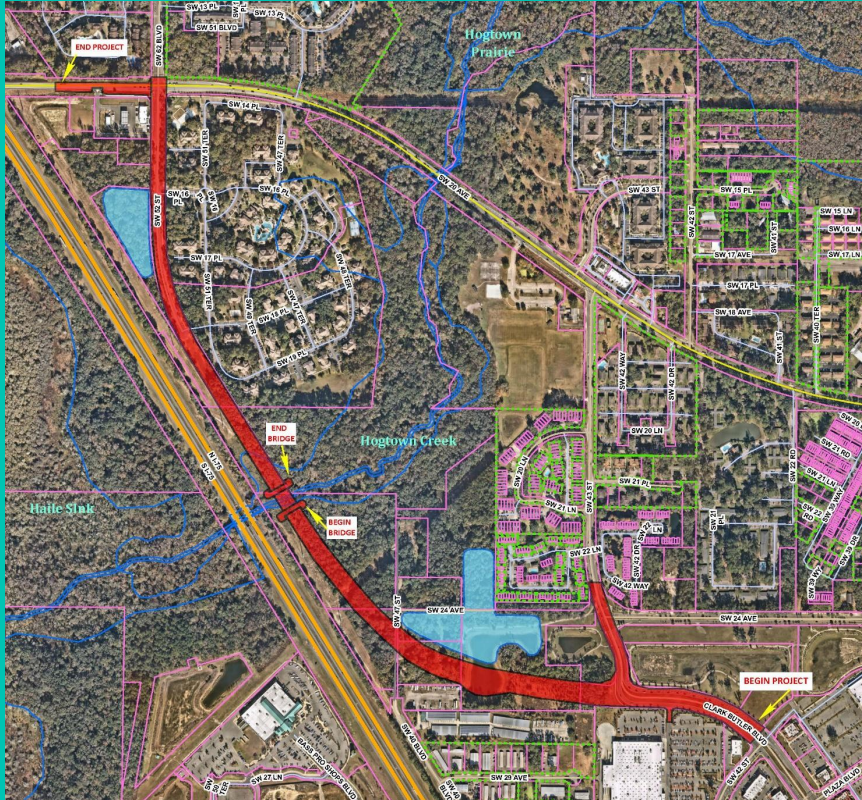


City of **Gainesville**

SW 62nd Boulecard Connector
Countywide Wetland Protection Code Application to BoCC

Brian M. Singleton, P.E., City Engineer
City of Gainesville Public Works

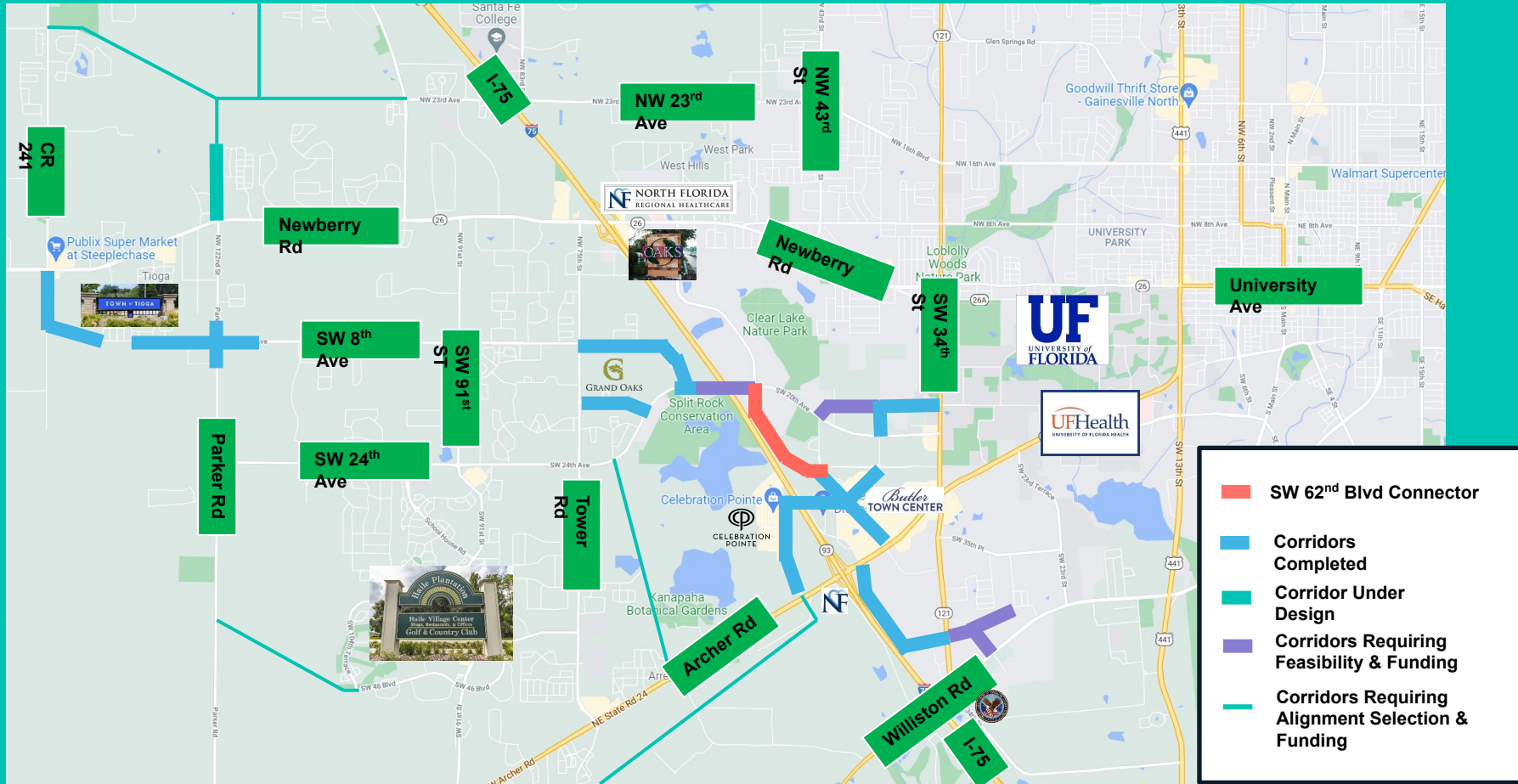
Project Background



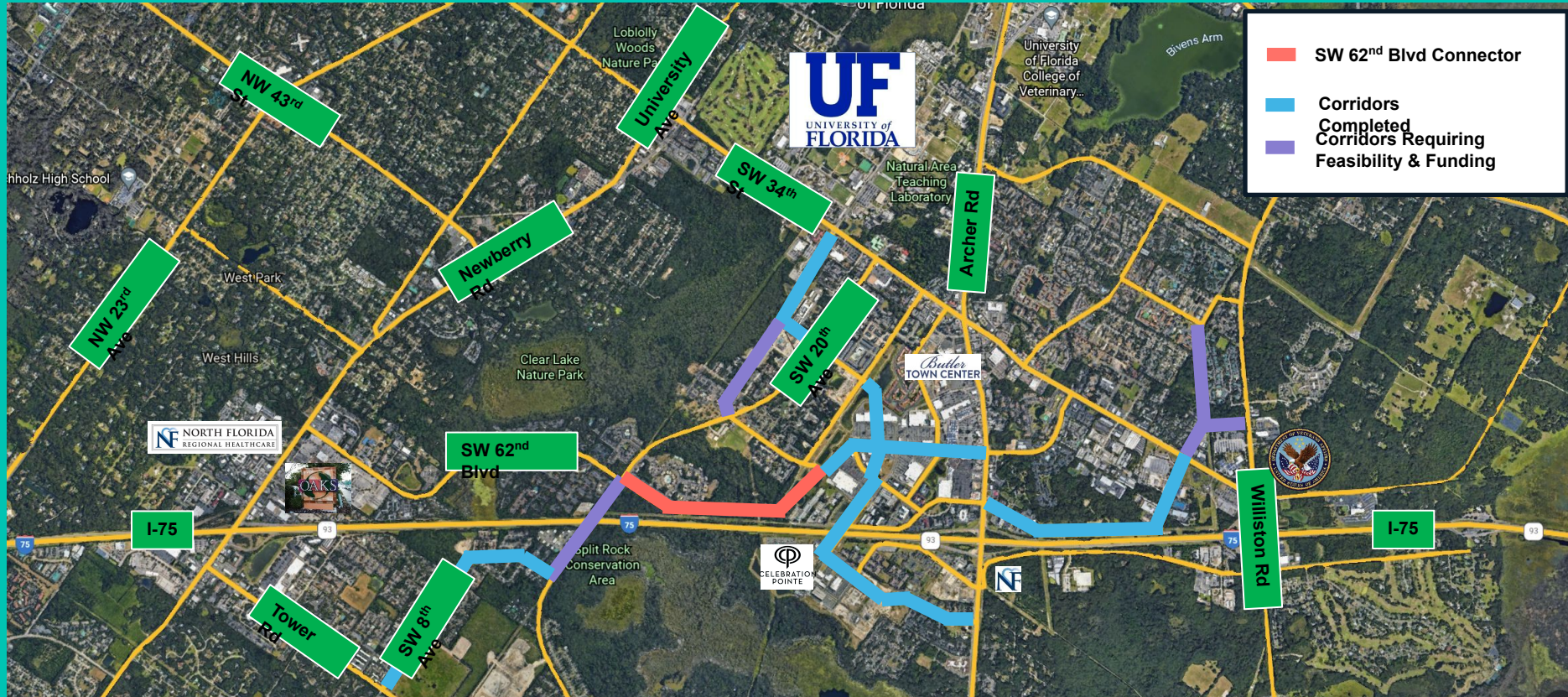
Purpose

- Complete interconnected roadway grid in accordance with City and County Comprehensive Plans
- Reduce congestion on I-75, SW 34th St, SW 20th Ave, Archer Rd and Newberry Rd

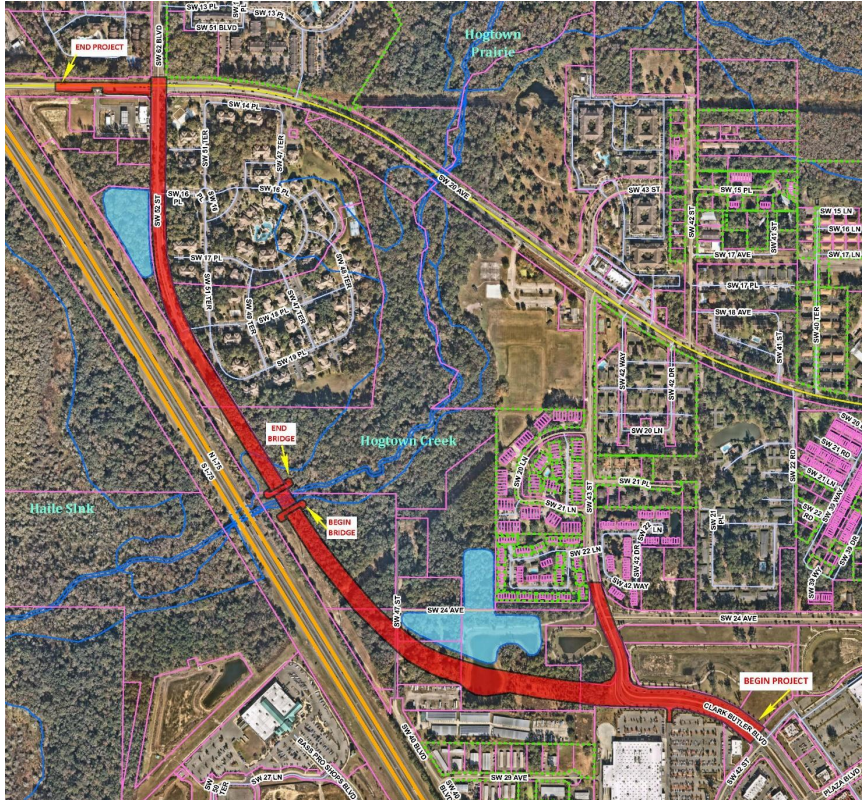
Recently Completed & Upcoming Grid Projects



Recently Completed & Upcoming Grid Projects



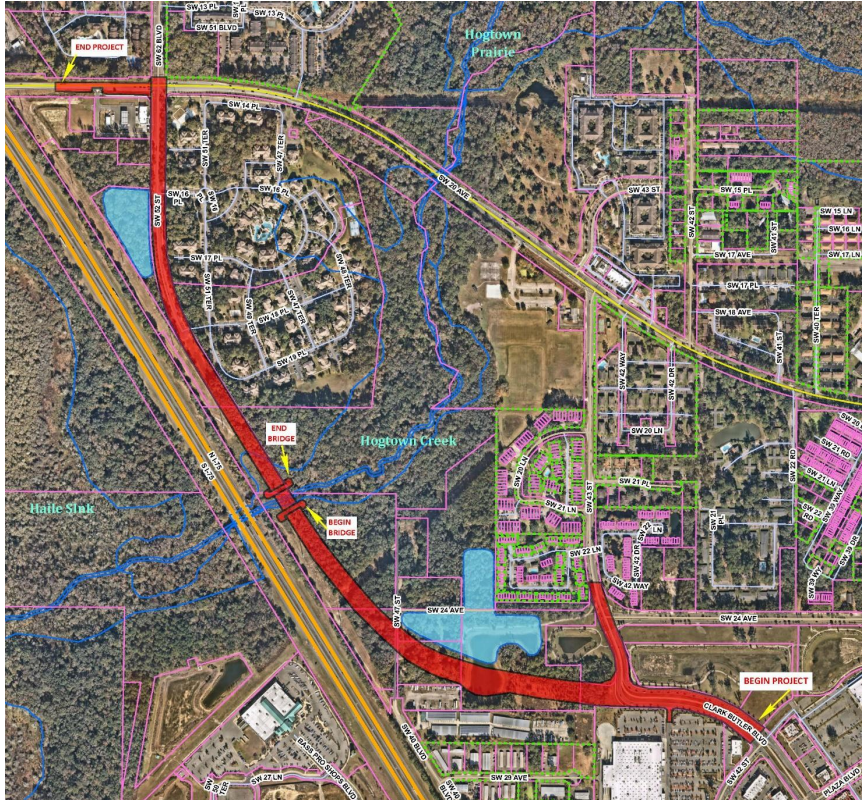
Project Background



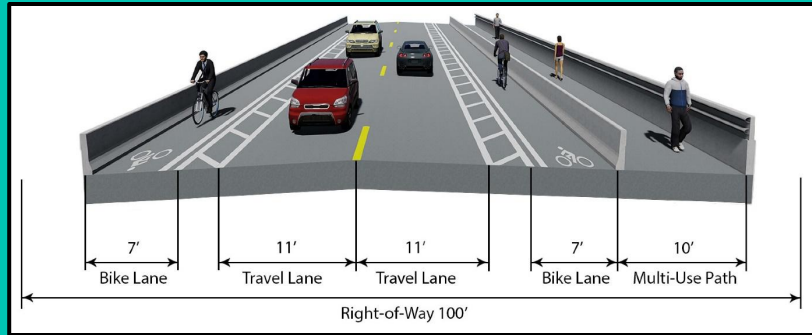
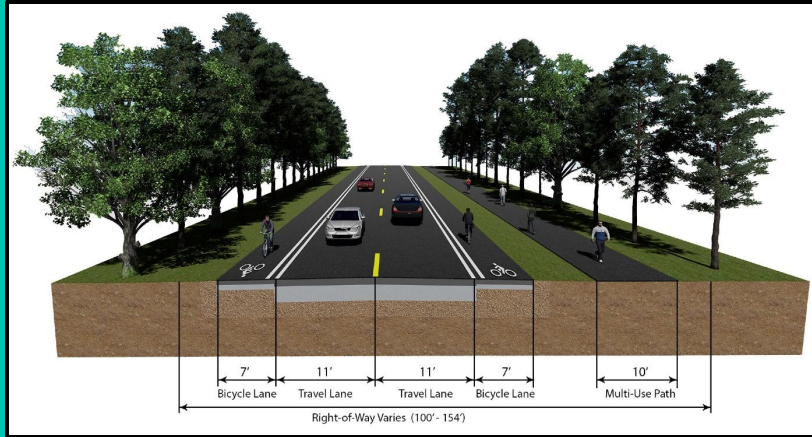
History

- Established as a FHWA/FDOT project delivered by County/City through grant agreements
- 2007 to 2014 – County started Project Development & Engineering (PD&E) study and transferred to City for

Project Background

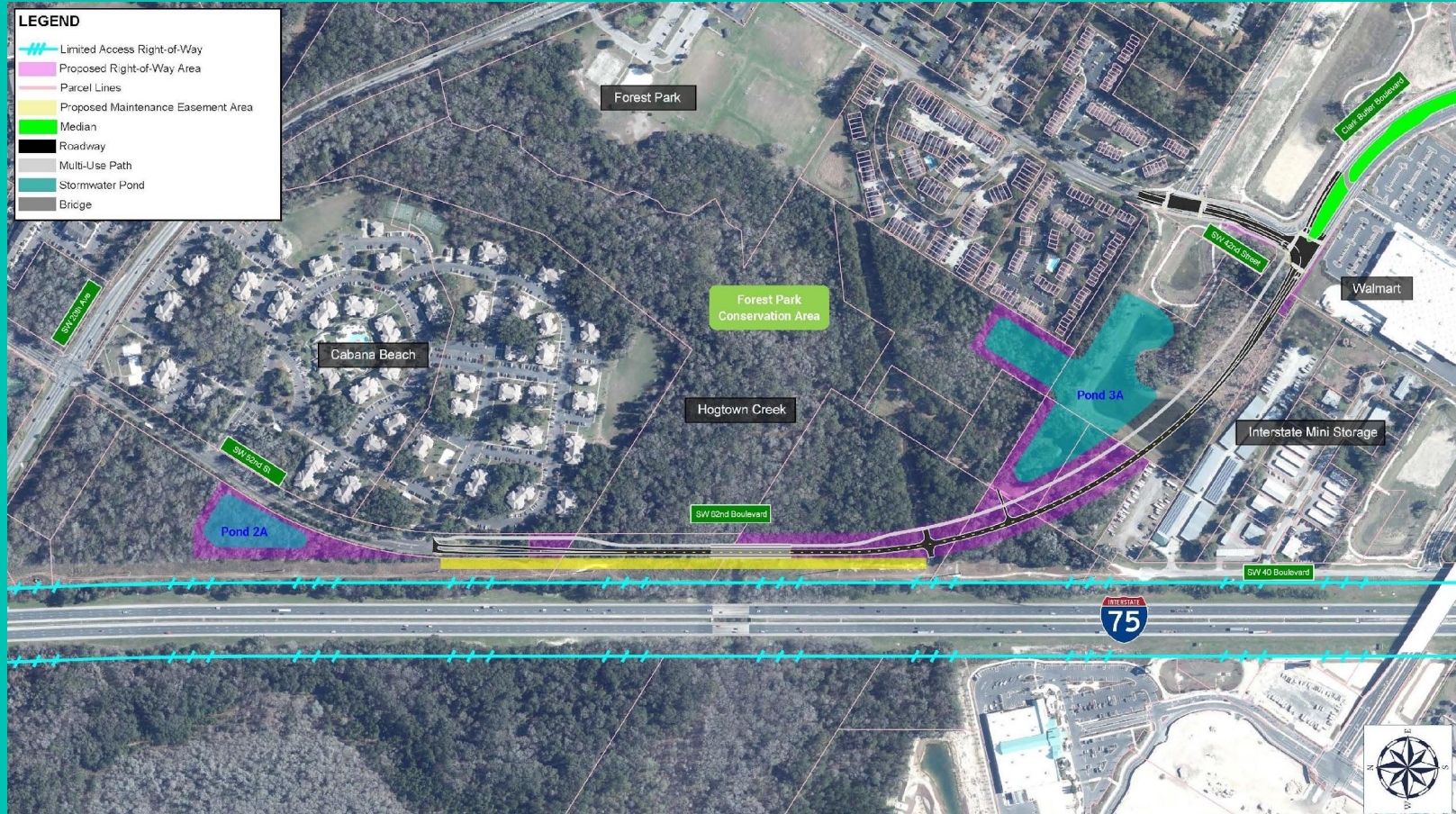


Project Scope

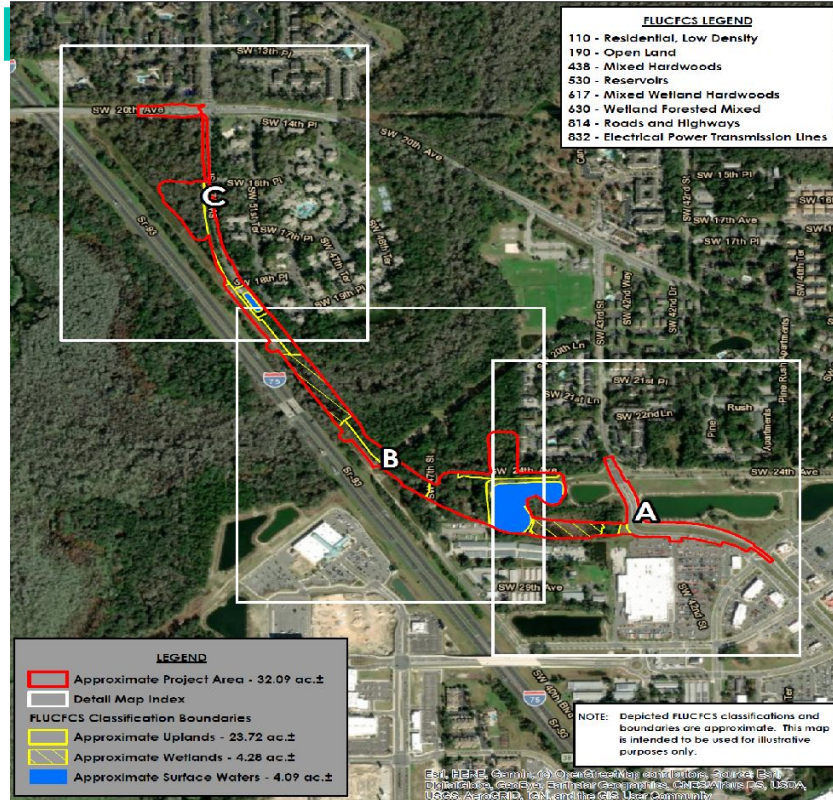


- 1.1 miles in length
- Right-of-way 100 ft to 154 feet wide
- 11 ft travel lanes
- 10 ft shoulders/7 ft bike lanes
- 10 ft multi-use path

Project Scope



Wetland Environmental



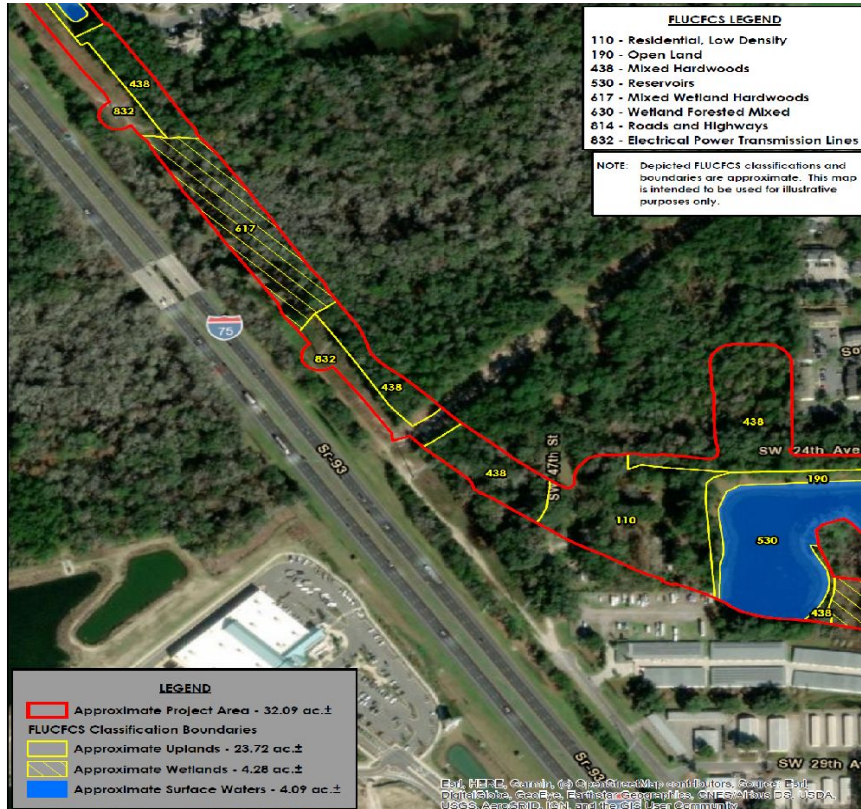
Wetland Impacts

- Regulated by State

Wetland Buffer Impacts

- Regulated by State, County and City; County standards most stringent; State does not recognize local regulations

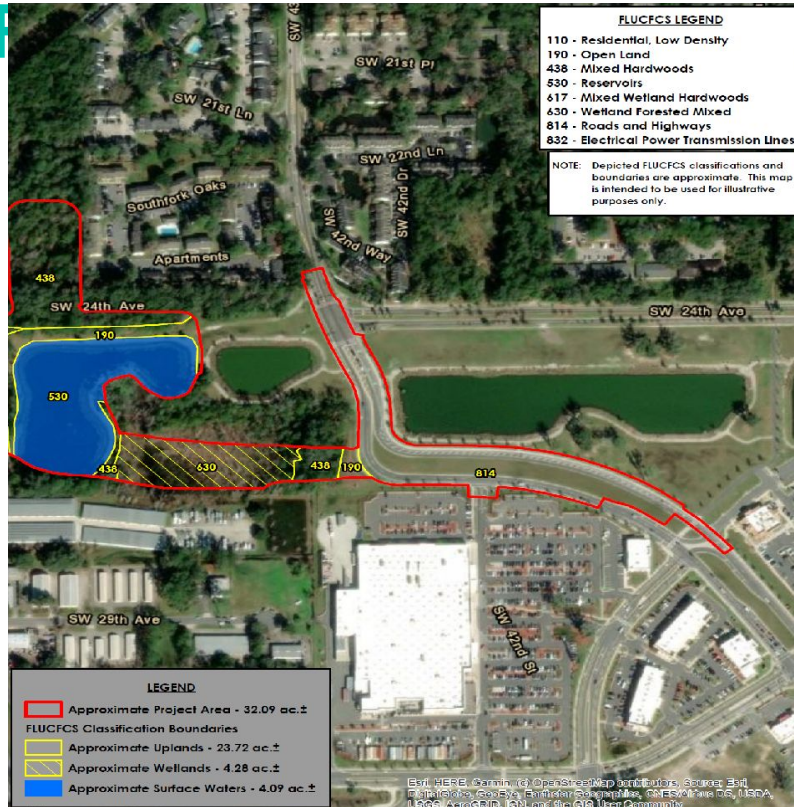
Wetland Environmental



Wetland/Buffer Avoidance/Impact Minimization

- 11 alternatives evaluated;
selected alignment most
appropriate based on cultural
& environmental resources,
operation, safety and costs.
Avoidance not feasible in all
alternatives except no-build

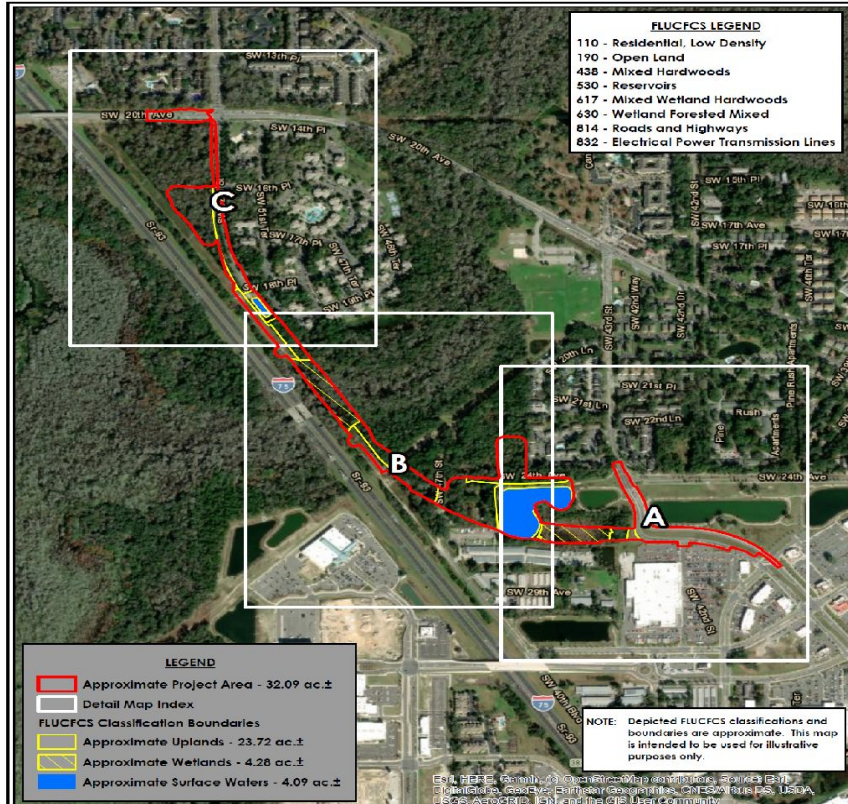
Wetland Environmental



Wetland/Buffer On-Site Mitigation

- Not feasible due to limited property that is undeveloped or not under conservation

Wetland Environmental



Wetland/Buffer Off-site Mitigation

- Limited to property in existing inventory due to funding source
- Reviewed all City owned property for potential wetland construction or restoration

FLUCCS LEGEND

- 110 - Residential, Low Density
- 190 - Open Land
- 438 - Mixed Hardwoods
- 530 - Reservoirs
- 617 - Mixed Wetland Hardwoods
- 630 - Wetland Forested Mixed
- 814 - Roads and Highways
- 832 - Electrical Power Transmission Lines

LEGEND

- [Red Outline] Approximate Project Area - 32.09 ac.±
- [Grey Outline] Detail Map Index
- FLUCCS Classification Boundaries**
 - [Yellow Outline] Approximate Uplands - 23.72 ac.±
 - [Yellow Outline] Approximate Wetlands - 4.28 ac.±
 - [Blue Fill] Approximate Surface Waters - 4.09 ac.±

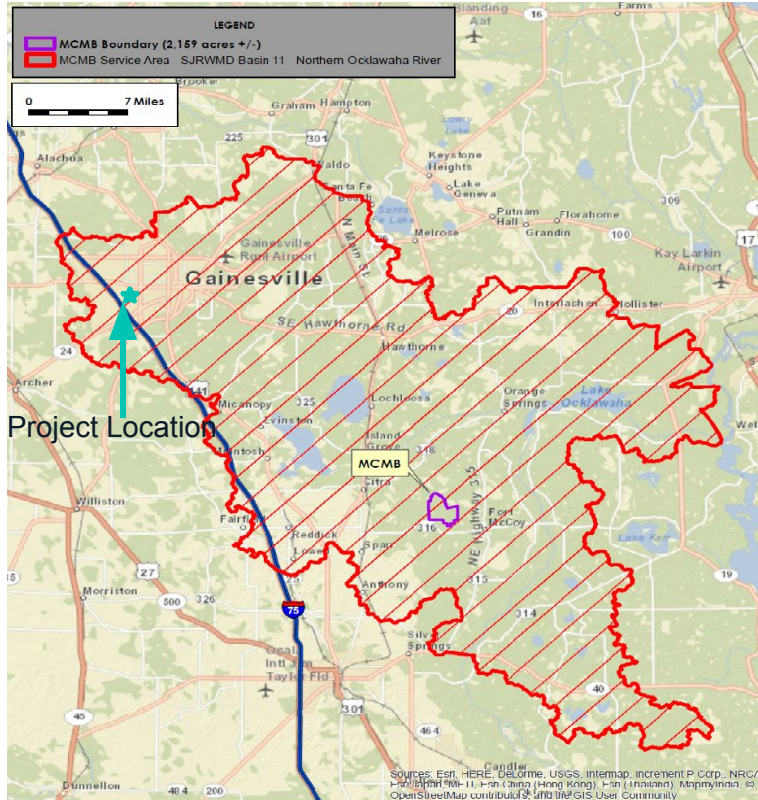
NOTE: Depicted FLUCCS classifications and boundaries are approximate. This map is intended to be used for illustrative purposes only.

For more information, contact the Florida Department of Transportation, Bureau of Planning and Design, at (813) 440-1234 or visit our website at www.floridadot.com.

- Total Primary & Secondary Impacts: 11.2 Acres

- Preliminary Total Wetland
Function Loss Rating: 4.5
credits calculated in
accordance with FS via the
Uniform Mitigation
Assessment Method

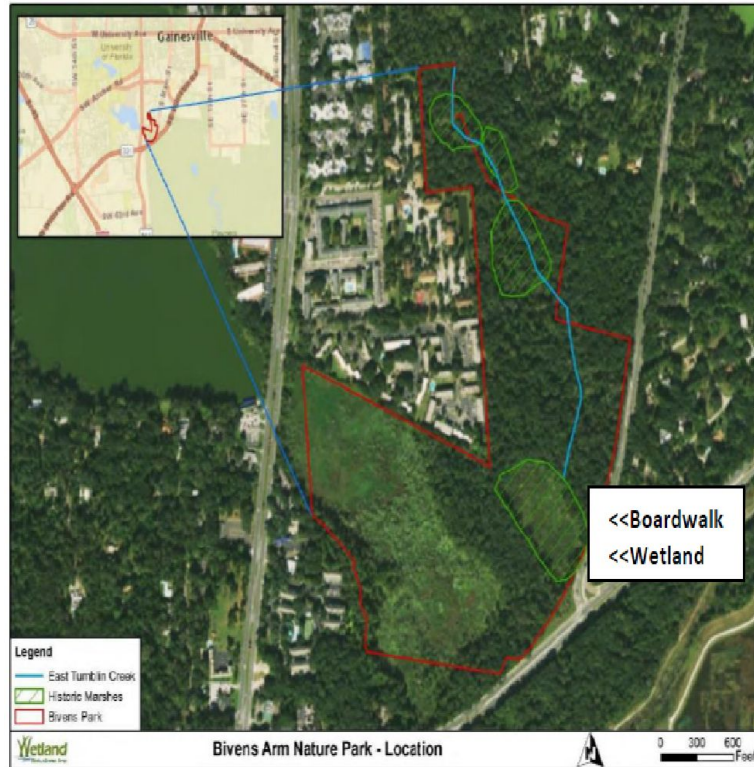
Wetland Environmental Resources



Wetland Mitigation Proposal

- Purchase credits from Mill Creek Mitigation Bank
- Anticipated that 4.5 credits will be required; total TBD by the State
- Most cost effective option; no perpetual costs to the public

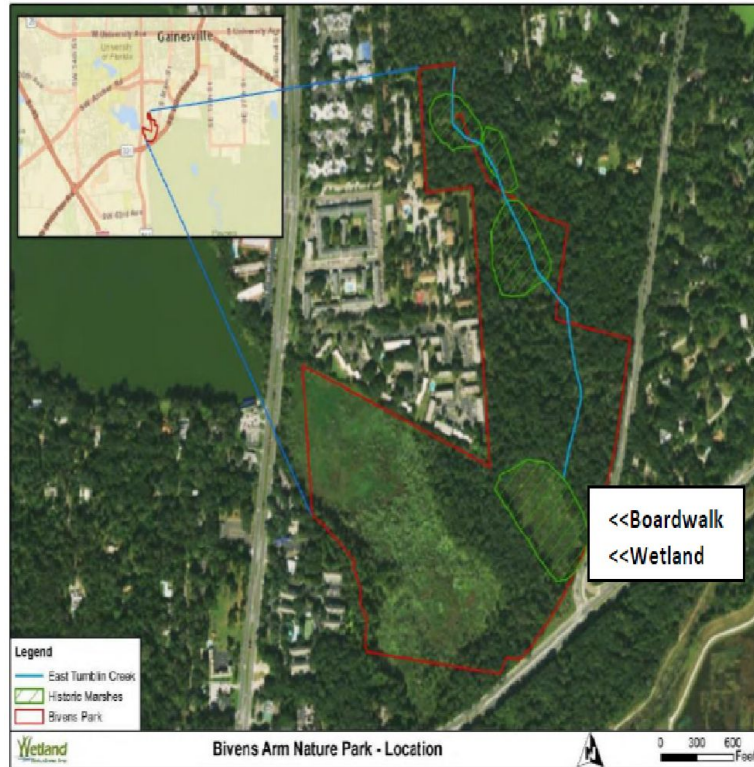
Wetland Environmental Resources



Wetland Buffer Mitigation Proposal

- 5 acres of historical marsh was drained in the 1960s
- Fund the design of Bivens Arm Boardwalk Wetland Marsh Restoration including a phasing plan at \$100K in local funds

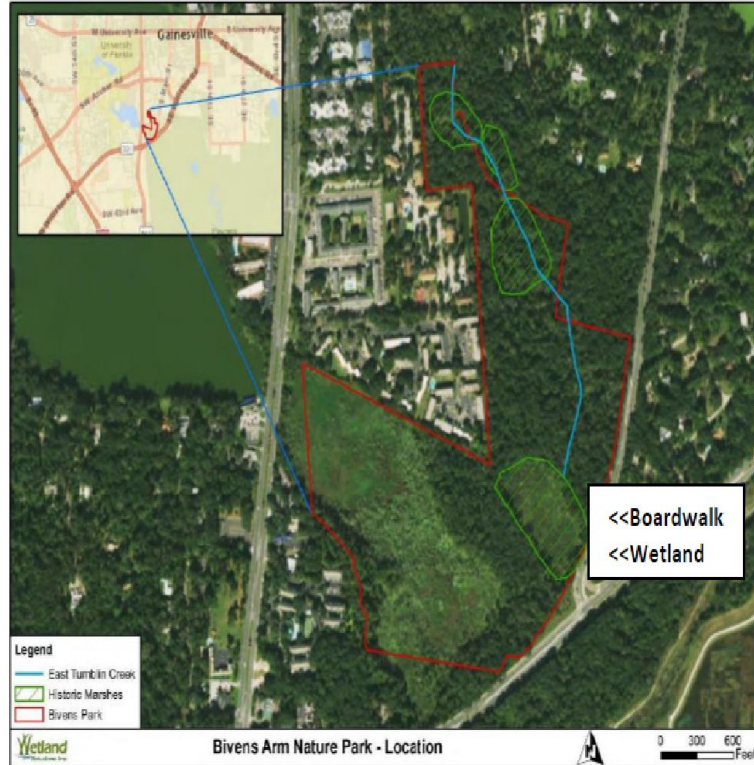
Wetland Environmental Resources



Wetland Buffer Mitigation Proposal

- Construct at least \$200K in local funds currently allocated to Bivens Arm Marsh Restoration which consist of vegetation removal & construction of storm water control structures

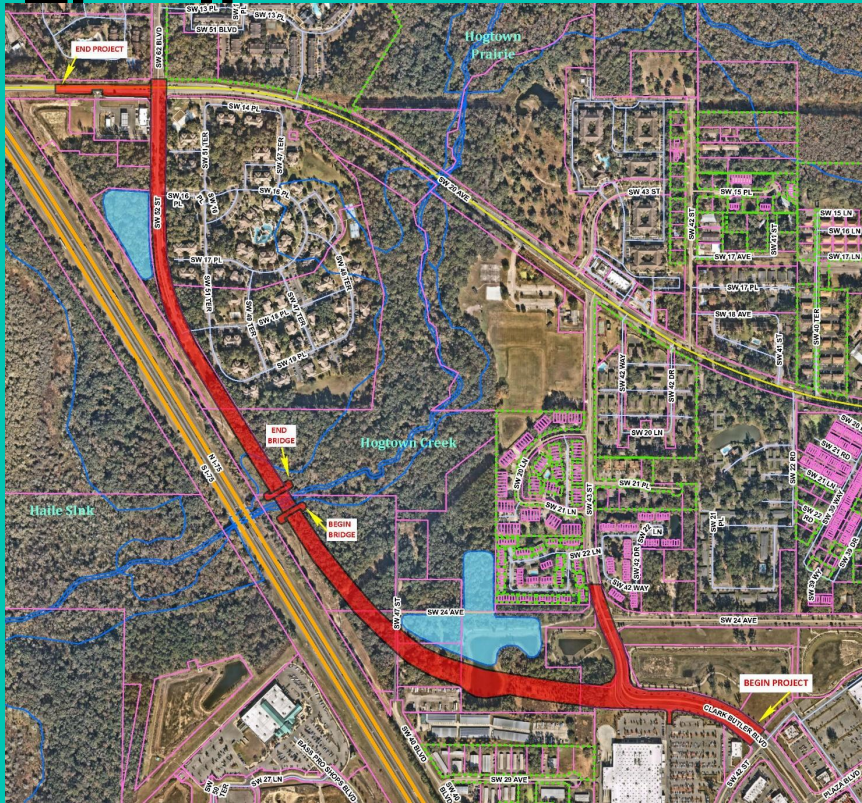
Wetland Environmental Resources



Wetland Buffer Mitigation Proposal

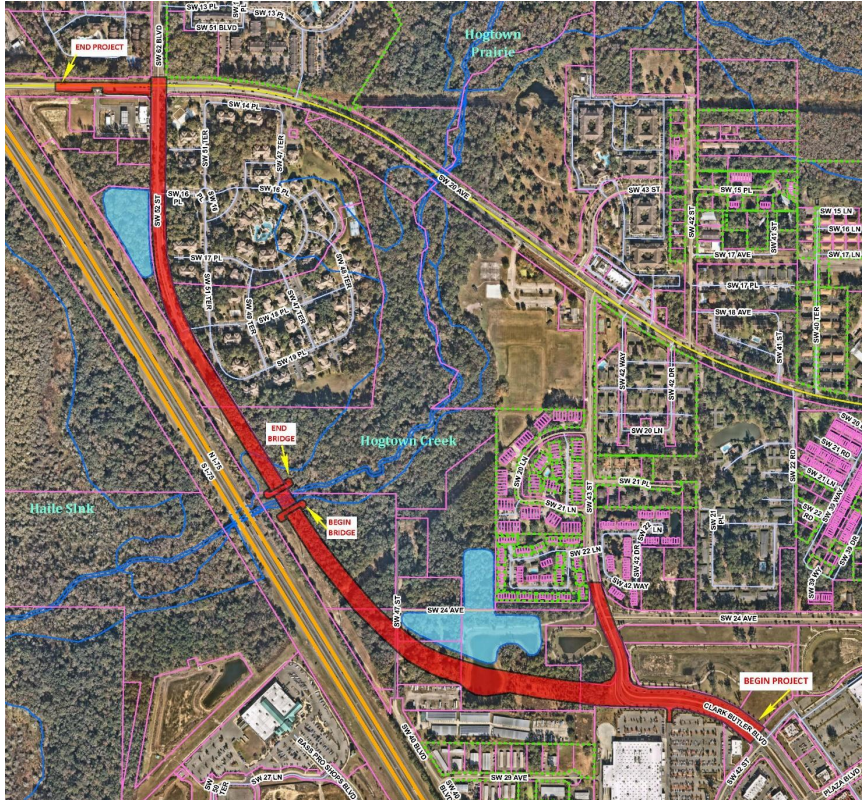
- If Bivens Arm is determined to be not feasible (not anticipated), transfer \$100K to the Environmental Sensitive Lands Fund

Project Completion



- November 2021: Complete 100% design plans
- February 2022: FDOT to complete ROW phase
- February 2022: Complete final design and permitting
- Fall 2022 to Fall 2024: Construction Phase

Summary



- Project demonstrates a public purpose
- Wetland impacts minimized
- Mitigate wetland by credit purchase
- Mitigate buffer by Bivens Arm Marsh Restoration

Thank You.

Qu

