



# ***Alachua County, FL***

## ***Joint Meeting***

---

### **Meeting Agenda - Final**

**Friday, May 29, 2020**

**10:00 AM**

**City of Gainesville**

This is a virtual meeting. The public may attend virtually through Cox Channel 12, Facebook, and the County's Video on Demand website. For meeting audio only, call 301-715-8592, and when prompted, use code 670 965 3024. The public may submit comments to the board through email ([bocc@alachuacounty.us](mailto:bocc@alachuacounty.us)) or by calling into the public comment message line when prompted to call during the meeting. Public comment will be taken by telephone for all non-ministerial items on which the Commission votes. Once public comment is opened for an item under discussion, please call 929-205-6099 (enter meeting code 273 174 8038). Callers will be put in a queue, and prompted when it is their turn to speak. TO AVOID FEEDBACK, SPEAKERS MUST TURN DOWN THEIR MEETING SOUND WHEN ADDRESSING THE COMMISSION. Callers should state their name and limit comments to two minutes. The Commission will allow up to a total of 30 minutes for citizen comments on each item opened for public comment. In addition, the Commission will open phone lines for one 30 minute public comment session for the public to discuss items not on the Commission agenda. The public is encouraged to submit any written or photographic documents prior to the meeting to [bocc@alachuacounty.us](mailto:bocc@alachuacounty.us).

---

All persons are advised that, if they decide to contest any decision made at any of these meetings, they will need a record of the proceedings and, for such purpose they may need to ensure that verbatim record of the proceedings is made which record includes the testimony and evidence upon which the appeal is to be based. (Section 286.0105 Florida Statutes)

---

If you have a disability and need an accommodation in order to participate in this meeting, please contact the Alachua County Equal Opportunity Office at (352)374-5275 at least 2 business days prior to the meeting. TTY users please call 711 (Florida Relay Service).

**Call To Order****Welcome****Introduction**

Mayor Lauren Poe, City of Gainesville

Chair Robert Hutchinson, Alachua County Commission

**Adoption of the Agenda****Items For Discussion**

1. [20-0406](#) Alachua County Sheriff's Office/Gainesville Joint Aviation Unit

*Fiscal Consideration:* TBD

*Recommended Action:* Have a discussion on a joint aviation unit.

[FINAL Funding Allocation Methodology with Exhibits 6 11 14.pdf](#)  
[MSTU Split updated 3-3-17.pdf](#)  
[Annual Aviation Cost Letter 2020.pdf](#)  
[City of Gainesville Memo of Costs for Aviation Unit Helicopter.pdf](#)  
[ACSO / GPD Agreement for Joint Aviation Unit.pdf](#)

2. [20-0439](#) Radio System

*Fiscal Consideration:* N/A

*Recommended Action:* Have a discussion on the radio system.

[5-29-20 Joint Commission-Radio System Presentation.pptx](#)  
[Alachua County Draft Ordinance.pdf](#)

3. [20-0444](#) Enforcement of State and County Emergency Orders

*Fiscal Consideration:* N/A

*Recommended Action:* Discuss enforcement of state and county emergency orders.

[City of Gainesville Equity Toolkit.pdf](#)  
[EO 20-25 \(Full Phase I\) \(Amendment 2\) 5-25-20.pdf](#)

**Public Comment****Commission General Comments and Information Discussion**

County Commission Comment

City Commission Comment

**Adjourn**



## Agenda Item Summary

---

Agenda Date: 5/29/2020

Agenda Item No.: 1.

---

**Agenda Item Name:**

Alachua County Sheriff's Office/Gainesville Joint Aviation Unit

**Presenter:**

Click or tap here to enter text.

**Description:**

Click or tap here to enter text.

**Recommended Action:**

Have a discussion on a joint aviation unit.

**Prior Board Motions:**

Click or tap here to enter text.

**Fiscal Consideration:**

TBD

**Background:**

Attached is the last update to properly allocate ACSO Law Enforcement Cost between the General Fund and the MSTU.

Also attached is the original report developed in 2014.

The study was updated when there was a significant shift in services provided through School Resource Deputies in 2017.

The study was performed with the assistance of the Clerk of the Court's office and the Tax Collector's office with data provided by ACSO.

The General Fund provides base level services provided to every citizen of Alachua County including within municipalities.

The MSTU provides enhanced services (i.e. patrol) for the unincorporated area as well as municipalities that participate.

During the study, we reviewed all ACSO divisions and analyzed how and to whom they provided services. Each Bureau was then allocated into the total pot with a blended rate provided to properly allocate cost.

The blended rate at the bottom of the spreadsheet is the 46% GF / 54% MSTU

The study was performed with the assistance of the Clerk of the Court's office and the Tax Collector's office, and the data was provided by ACSO.

Aviation Unit Budget - This is the County's OMB staff understanding based on conversation with the ACSO staff.

In the FY20 budget, ACSO only requested a budget for half of a mechanic and supplies (see attached), \$52,000 plus approx. \$15,000 for Jet fuel (not incl.). The other half they receive from the City.

We pay for all of the ACSO pilots and spotters and it is included in the GF / MSTU split that makes up the 46% GF / 54% MSTU. The City have their own pilot and support that they pay for from their budget. (GPD officers)

Since the City has indicated that they are not going to continue to participate, the Sheriff has requested the other half (\$52,000 plus \$15,000) in FY21 budget request.

# Alachua County Commission



## Funding Allocation Methodology for the Alachua County Sheriff's Office Law Enforcement Function

---

### **Directive**

Determine the appropriate funding ratio of General Fund and Municipal Service Taxing Unit – Law Enforcement (MSTU-LE) to support Law Enforcement Appropriations.

### **Objectives**

- 1) Identify the services provided by the Alachua County Sheriff's Office (ACSO).
- 2) Identify the citizenry that primarily benefits from the services provided.
- 3) Determine the appropriate funding allocation between the General Fund and MSTU – LE based on property location of beneficiaries of the service provided.

**June 2014**

## Introduction

During the February 27, 2014 Budget Development Meeting, the Alachua County Commission directed the County Manager to study and report on an objective methodology to appropriately allocate funds to the Sheriff's Office of Law Enforcement function from the County's General Fund (GF) and the County's Municipal Service Taxing Unit for Law Enforcement (MSTU-LE). In addition to the Office of Management and Budget for the County Commission, the County Manager requested assistance from the Offices of the Clerk of the Court, Tax Collector and Sheriff. Financial Officers from each organization participated in a two month review of law enforcement funding and costs.

## Review Approach

The group began with a review of Florida Statute 30.15 (Exhibit 1), which addresses the powers, duties and obligations of a county Sheriff, and Ordinance 02-21 (Exhibit 2), which established the MSTU for Law Enforcement and its purpose to provide services for the benefit of the property or residents of the unincorporated area. Data accumulated for review was from the Fiscal Year Ended September 30, 2013, and was applied to the Sheriff's certified budget for Fiscal Year Ended September 30, 2014. The group reviewed the Sheriff's organization chart, law enforcement bureaus, interviewed the Sheriff's staff and participated in presentations to determine the most useful and relevant information needed to make decisions.

Nothing in this allocation methodology should be interpreted to assume the Sheriff's Office will continue to provide services as they are currently provided. Our methodology is intended to provide the County with an approach to allocating funds for the dynamic operations of the Sheriff's Office as demands for service change over time. The County should periodically review the underlying workload data to provide the Board the most up to date information in which to make their funding decision.

## **Facts and Findings**

The Sheriff's budget requests are submitted as 4 Major functions. Court Services (Bailiffs) are a county-wide function so they were excluded from the study and remain a cost of the General Fund. Jail Services are provided by the Sheriff through an inter-local agreement with the County Commission and serve a county-wide function so they were excluded from the study and remain a cost of the General Fund. The Combined Communication Center (CCC) Services are provided by the Sheriff through inter-local agreements, and funded by the participating agencies. Although the CCC was not used in calculating a split; it will be impacted by the results. This leaves Law Enforcement Services as the sole function to review for the appropriateness of using MSTU-LE funds.

Alachua County Ordinance 02-21 established the MSTU-LE "for the provision of law enforcement services provided by the Alachua County Sheriff's Office for the benefit of the property or residents of the unincorporated areas of

the county.” Municipalities that do not provide law enforcement services to their citizens can be included by ordinance of the municipality. Currently, the MSTU-LE service area includes the unincorporated area, and the municipalities of Archer, Hawthorne and Newberry.

Allocations of cost and/or funding throughout the report are based on the property values and population estimates of these areas as the service area. The MSTU-LE service area makes up 45.42% of the 2013 Taxable Value and 43.12% of the population of the County (Exhibit 3). The taxable value percentage of 45.42 will become an integral part of any allocation to properly account for the fact that these property owners also pay General Fund Ad Valorem Taxes in addition to the MSTU-LE Ad Valorem Taxes. The population percentage of 43.12 had a limited use to assist in determining the service provided for school populations served by the School Resource Officers in the Juvenile Bureau. When applicable, Law Enforcement costs were offset by revenues.

The Sheriff's office provided organization charts (Exhibit 4) and the list of bureaus within the Law Enforcement function (Exhibit 5). This information aligns with the Certified Budget request submitted by the Sheriff for Fiscal Year 2013-2014. The Certified Budget provides cost information for each bureau as well as staffing FTEs. Each bureau was reviewed to determine the percentage of Law Enforcement services provided for the benefit of the property or residents in the service area.

Two reports were critical in identifying an appropriate allocation. One report listed calls responded by ACSO within each municipality or unincorporated



area (Exhibit 6). The second report available from the CCC listed the amount of time officers spent in each municipality or unincorporated area by Bureau. This report is referred to as the “dirt-time” report (Exhibit 7). Although the reports are similar, the detail of the “dirt-time” report allowed for more accurate allocations.

## **Allocation Methodology**

ASCO Bureaus were reviewed at the level presented in the Fiscal Year 2013-14 Certified Budget request. After much research, 6 unique percentage splits were used. These percentages were applied to the budget lines to formulate a weighted average split.

Bureaus that exist for county-wide purposes in-line with the general function of the Sheriff were allocated as 100% GF and 0% MSTU-LE. These Bureaus include the Office of the Sheriff encompassing senior support staff, Building and Facilities, Records, Warrants, and Civil. These services are not duplicated by other Law Enforcement Agencies within Municipalities.

The Patrol Divisions and Support Divisions that were closely attributable to patrol were reviewed in conjunction with the “Dirt-time” report. All of the operational units, except for the School Resource Officers and Crossing Guards, are aligned with the “dirt-time” report. Additionally, the closely related support divisions of property, evidence, radio technicians, judicial services and training are included in this percentage. Based on the data provided, 88.9% of patrol units spent time in the unincorporated or participating municipality areas. Taking

into account that taxpayers supporting the MSTU-LE also support the General Fund with taxes, the split was allocated 20% GF and 80% MSTU-LE (Exhibit 8).

The Juvenile Bureau was allocated through an alternate methodology that better reflects the use of School Resource Officers (Exhibit 9). A more complex formula was used that determined the relationship of student populations to the ASCO officers serving the schools and how the ratio relates to the county population. This allowed a breakdown of municipal areas served by municipalities, municipal populations served by ASCO, and the unincorporated area and participating municipalities split into GF and MSTU-LE. This was further broken down into a ratio reflective of a 71% GF and 29% MSTU-LE split.

The splits determined for the Patrol and closely related Support Divisions were combined with the Juvenile Bureau split to calculate the general Support Divisions (Exhibit 10). Two separate calculations were used based on how much of the cost in the reviewed division were directly charged to non-patrol functions. One calculation resulted in the divisions for Support Services Major, Administrative Services and Grants Coordination splitting 78% GF and 22% MSTU-LE. The second calculation resulted in the divisions of Human Resources, Fiscal Services, Information Technology and Accreditation splitting 48% GF and 52% MSTU-LE. The division for Fleet was based on an allocation of vehicle usage that result in a split of 45% GF and 55% MSTU-LE.

The above percentages were then applied to the Fiscal Year 2013-2014 ASCO budget request (Exhibit 11). Using the budget for each division allows for a proper weighting of the allocation to properly determine a final split.

An appropriate funding split for the Law Enforcement Function of the Alachua County Sheriff's Office is **46% General Fund and 54% MSTU-LE**.

## Options

The allocation summary supports additional law enforcement cost be funded by the MSTU-LE. However, this fund does not currently have sufficient resources to cover this allocation. If the County desires to fund law enforcement based on this study, revenue enhancements and/or expenditure reductions will need to be identified.

The Fiscal Year 2013-2014 Law Enforcement budget was funded approximately 50% by GF and 50% by MSTU-LE. To shift funding to the calculated 46% GF and 54% MSTU-LE split, for the 2015 certified ASCO budget request, would require additional revenue in the MSTU-LE in the amount of approximately \$1,250,000. Based on the 2015 estimated taxable values, this will require an increase in the MSTU-LE millage of 0.2550 mills if supported entirely by property taxes.

Additionally, Law Enforcement shares in the costs to operate the Combined Communications Center (CCC). For Fiscal Year 2013-2014, these costs were split 30% GF and 70% MSTU-LE. Based on the fact that the CCC's main function is to notify and deploy Patrol Services, the CCC should be paid from the same split of 20% GF and 80% MSTU-LE. This will shift an estimated \$250,000 of the funding to the MSTU-LE and will require an increase in the MSTU-LE of 0.0510 mills if supported entirely by property taxes.

## **Service Appreciations**

The County Manager wishes to thank the Offices of the Clerk of the Court and Tax Collector for assisting in the review, and the Sheriff's office for providing all of the requested data in a timely and transparent fashion.

## (EXHIBIT 1)

# The Florida Senate

## 2013 Florida Statutes

<u>Title V</u> JUDICIAL BRANCH	<u>Chapter 30</u> SHERIFFS  <u><a href="#">Entire Chapter</a></u>	<b>SECTION 15</b> <b>Powers, duties, and obligations.</b>
-----------------------------------	----------------------------------------------------------------------------	--------------------------------------------------------------

### 30.15 Powers, duties, and obligations.—

- (1) Sheriffs, in their respective counties, in person or by deputy, shall:
- (a) Execute all process of the Supreme Court, circuit courts, county courts, and boards of county commissioners of this state, to be executed in their counties.
  - (b) Execute such other writs, processes, warrants, and other papers directed to them, as may come to their hands to be executed in their counties.
  - (c) Attend all sessions of the circuit court and county court held in their counties.
  - (d) Execute all orders of the boards of county commissioners of their counties, for which services they shall receive such compensation, out of the county treasury, as said boards may deem proper.
  - (e) Be conservators of the peace in their counties.
  - (f) Suppress tumults, riots, and unlawful assemblies in their counties with force and strong hand when necessary.
  - (g) Apprehend, without warrant, any person disturbing the peace, and carry that person before the proper judicial officer, that further proceedings may be had against him or her according to law.
  - (h) Have authority to raise the power of the county and command any person to assist them, when necessary, in the execution of the duties of their office; and, whoever, not being physically incompetent, refuses or neglects to render such assistance, shall be punished by imprisonment in jail not exceeding 1 year, or by fine not exceeding \$500.
  - (i) Be, ex officio, timber agents for their counties.
  - (j) Perform such other duties as may be imposed upon them by law.
- (2) Sheriffs, in their respective counties, in person or by deputy, shall, at the will of the board of county commissioners, attend, in person or by deputy, all meetings of the boards of county commissioners of their counties, for which services they shall receive such compensation, out of the county treasury, as said boards may deem proper.
- (3) On or before January 1, 2002, every sheriff shall incorporate an antiracial or other antidiscriminatory profiling policy into the sheriff's policies and practices, utilizing the Florida Police Chiefs Association Model Policy as a guide. Antiprofiling policies shall include the elements of definitions, traffic stop procedures, community education and awareness efforts, and policies for the handling of complaints from the public.

**History.**—s. 14, ch. 4, 1845; ss. 1, 4, ch. 157, 1848; s. 9, ch. 1626, 1868; ss. 1, 2, ch. 1659, 1868; RS 650, 651, 653, 1241, 1242, 2583; GS 991, 992, 994, 1670, 1671, 3503; RGS 1804, 1805, 1807, 2875, 2876, 5388; CGL 2856, 2857, 2859, 4572, 4573, 7527; s. 4, ch. 22790, 1945; s. 4, ch. 73-334; s. 1, ch. 91-95; s. 179, ch. 95-147; s. 2, ch. 2001-264; s. 5, ch. 2013-25.

**Note.**—Former ss. 144.01-144.03, 30.16.

Disclaimer: The information on this system is unverified. The journals or printed bills of the respective chambers should be consulted for official purposes.

Copyright © 2000- 2014 State of Florida.

(EXHIBIT 2)

ORDINANCE 02- 21

AN ORDINANCE OF THE BOARD OF COUNTY COMMISSIONERS OF ALACHUA COUNTY, FLORIDA AMENDING CHAPTER 35 OF THE ALACHUA COUNTY CODE OF ORDINANCES RELATING TO MUNICIPAL SERVICE TAXING UNITS; CREATING AND ESTABLISHING THE BOUNDARIES FOR TWO MUNICIPAL SERVICE TAXING UNITS; DESIGNATING THEIR GOVERNING BODIES; PROVIDING FOR ADOPTION OF BUDGETS; AUTHORIZING THE EXPENDITURE AND BORROWING OF FUNDS; AUTHORIZING THE LEVY OF AD VALOREM TAXES; REPEALING PRIOR MUNICIPAL SERVICE TAXING UNIT ORDINANCE; PROVIDING FOR TRANSITION; PROVIDING FOR EFFECTIVE DATE;

WHEREAS, Article VII, Section 9(b) of the Constitution of the State of Florida provides that a County may levy additional taxes for the purpose of providing municipal services in the unincorporated areas; and

WHEREAS, Section 125.01(1)(q), Florida Statutes, grants the governing body of a county the power to establish municipal service taxing units for any or all of the unincorporated areas of the county;

BE IT ORDAINED BY THE BOARD OF COUNTY COMMISSIONERS OF ALACHUA COUNTY, FLORIDA:

**Section 1.** Chapter 35, Alachua County Code is hereby amended as follows:

**ARTICLE I - IN GENERAL**

**Section 35.01** Definitions.

As used in this ordinance:

“Fiscal Year” means the annual period commencing on each October 1 and terminating on the next ensuing September 30.

(EXHIBIT 2)

“MSTU-Unincorporated Services” refers to the Alachua County Municipal Service Taxing Unit created in Article II of this chapter.

“MSTU-Sheriff-Law Enforcement” refers to the Alachua County Municipal Services Taxing Unit created in Article III of this chapter.

**Article II - MSTU-UNINCORPORATED SERVICES**

**Section. 35.02.01 Created; Boundaries**

There is created the Alachua County MSTU-Unincorporated Services. The boundaries of the MSTU-Unincorporated Services shall include all of the unincorporated areas of the County existing on January 1, 2002 and on the first day of January each year thereafter. The MSTU-Unincorporated Services is established for the provision of municipal services which are rendered by the county for the benefit of the property or residents of the unincorporated area of the county.

**Section 35.02.02 Designation of governing body**

The county commission shall be the governing body of the MSTU-Unincorporated Services.

**Section 35.02.03 Budget**

Prior to the beginning of each fiscal year, a budget for the MSTU-Unincorporated Services shall be considered and adopted by the county commission in the manner provided by general law.

**Section 35.02.04 Authority to expend and borrow funds.**

The county commission shall be authorized to borrow and expend money and to issue bonds, revenue certificates, and other obligations of indebtedness, which powers shall be exercised in such manner and subject to such limitations as may be provided by general law.

**Section 35.02.05 Ad valorem taxes**

\*\*\*\*\*  
-2-

(EXHIBIT 2)

The county commission shall be empowered to levy and collect ad valorem taxes for the provision of services within the MSTU-Unincorporated Services to the extent permitted and in the manner provided by the constitution and general law of the state.

**Article III - MSTU-SHERIFF-LAW ENFORCEMENT**

**Section. 35.03.01 Created; Boundaries**

There is created the Alachua County MSTU-Sheriff-Law Enforcement. The boundaries of the MSTU-Sheriff- Law Enforcement shall include all of the unincorporated areas of the County existing on January 1, 2002 and on the first day of January each year thereafter. The MSTU-Sheriff-Law Enforcement is established for the provision of law enforcement services provided by the Alachua County Sheriff's Office for the benefit of the property or residents of the unincorporated area of the county.

**Section 35.03.02 Designation of governing body**

The county commission shall be the governing body of the MSTU-Sheriff-Law Enforcement.

**Section 35.03.03 Budget**

Prior to the beginning of each fiscal year, a budget for the MSTU-Sheriff-Law Enforcement shall be considered and adopted by the county commission in the manner provided by general law.

**Section 35.03.04 Authority to expend and borrow funds.**

The county commission shall be authorized to borrow and expend money and to issue bonds, revenue certificates, and other obligations of indebtedness, which powers shall be exercised in such manner and subject to such limitations as may be provided by general law.



**Section 35.04.05 Ad valorem taxes**

The county commission shall be empowered to levy and collect ad valorem taxes for the purpose of funding the Alachua County Sheriff's Office to provide law enforcement services within the MSTU-Sheriff-Law Enforcement to the extent permitted and in the manner provided by the constitution and general law of the state.

**Section 2. Repeal of Prior Ordinances.** Alachua County Ordinance numbered 80-8 is hereby repealed.

**Section 3. Transition.** A portion of the assets, liabilities, and fund balance for the Alachua County Municipal Service Taxing Unit existing on September 30, 2002 and attributable to the Sheriff's budget, shall be assumed by the MSTU-Sheriff-Law Enforcement, and the remaining portion of said assets, liabilities, and fund balance shall be assumed by the MSTU-Unincorporated Services herein created.

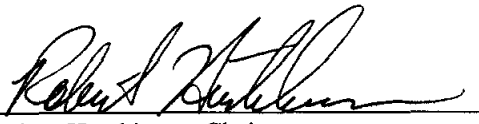
**Section 2. Severability.** It is the declared intent of the Board of County Commissioners that, if any section, subsection, sentence, clause, phrase, or provision of this ordinance is held invalid or unconstitutional by a court of competent jurisdiction, such invalidity or unconstitutionality shall not be so construed as to render invalid or unconstitutional the remaining provisions of this ordinance.

**Section 3. Inclusion in the Code.** It is the intention of the Board of Commissioners of Alachua County, Florida, and it is hereby provided that the provisions of this ordinance shall become and be made a part of the Code of Laws and Ordinances of Alachua County, Florida; that the sections of this ordinance may be renumbered or relettered to accomplish such intention; and that the word "ordinance" may be changed to "section", "article", or other appropriate designation.

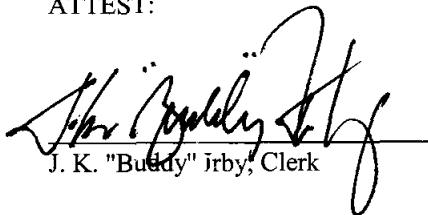
**Section 4. Effective date.** A certified copy of this ordinance shall be filed with the Department of State by the Clerk of the Board of County Commissioners within ten days after enactment by the Board of County Commissioners, and shall take effect upon filing with the Department of State.

DULY ADOPTED in regular session, this 28th day of May, 2002.

BOARD OF COUNTY COMMISSIONERS OF  
ALACHUA COUNTY, FLORIDA

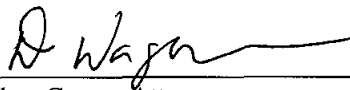
By:   
Robert Hutchinson, Chair

ATTEST:

  
J. K. "Buddy" Irby, Clerk

(SEAL)

APPROVED AS TO FORM

  
Alachua County Attorney

**Alachua County 2013 Taxable Value by District**

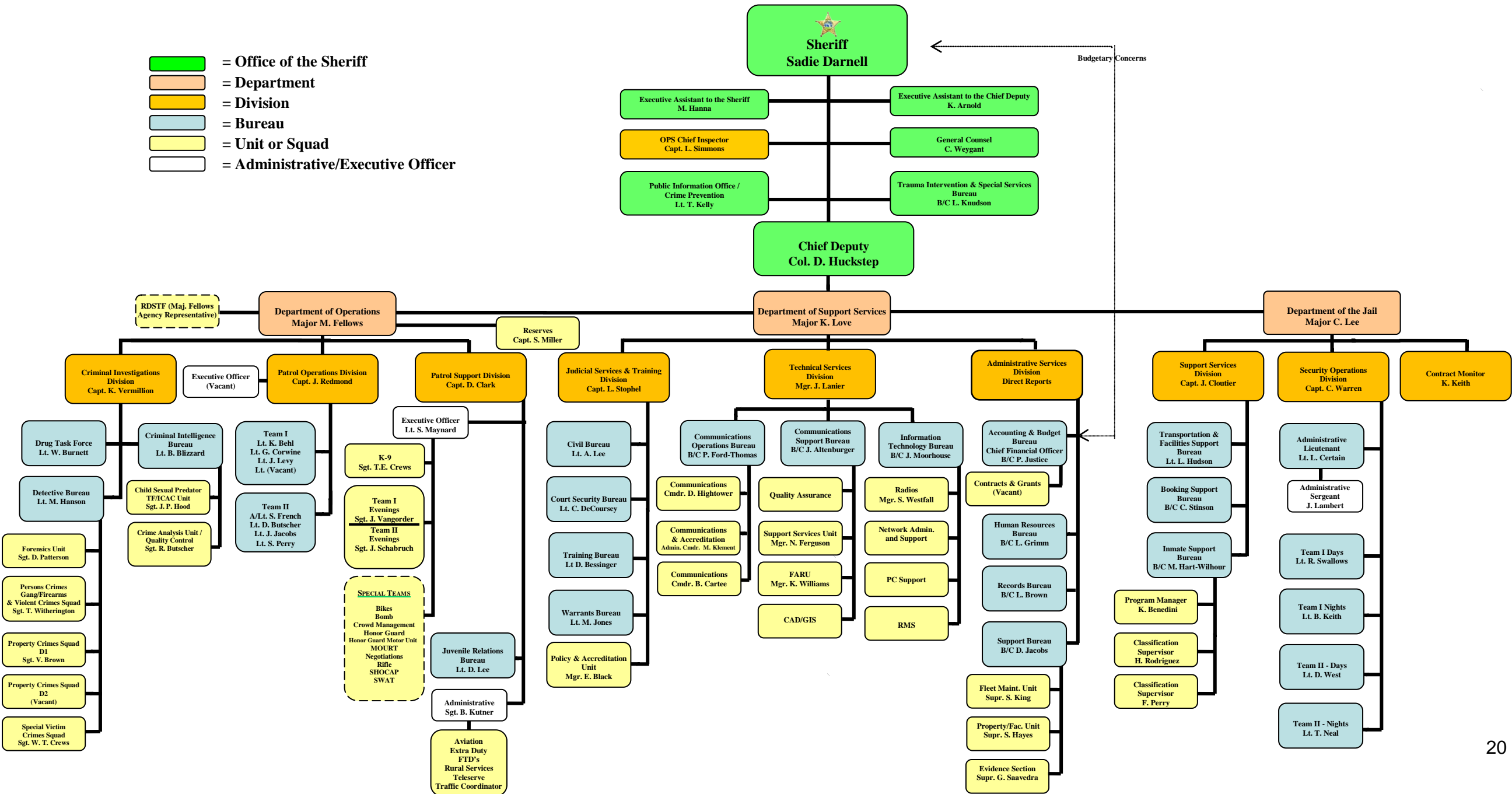
<b>Taxing District</b>	<b>2013 Taxable Value</b>	<b>Summary by Group</b>	<b>% of Countywide</b>	
Alachua	687,072,886			
Gainesville	5,179,979,365			
High Springs	216,169,186			
Lacrosse	10,064,128			
Micanopy	27,727,090			
Waldo	25,742,701	6,146,755,356	54.58%	Non-participating taxing districts
Archer	34,434,961			
Hawthorne	44,611,259			
Newberry	349,764,767			
Unincorporated	4,686,456,602	5,115,267,589	45.42%	Participating taxing districts
<b>Total</b>	<b>11,262,022,945</b>	<b>11,262,022,945</b>	<b>100.00%</b>	

**Office of Economic & Demographic Research****April 1, 2013****Population Estimates for Florida Municipalities**

<b>Municipality</b>	<b>Population</b>	<b>Summary by Group</b>	<b>% of Countywide</b>	
Alachua	9,300			
Gainesville	124,391			
High Springs	5,440			
La Crosse	360			
Micanopy	600			
Waldo	969	141,060	56.88%	Non-participating taxing districts
Archer	1,123			
Hawthorne	1,389			
Newberry	5,148			
Unincorporated	99,282	106,942	43.12%	Participating taxing districts
	<b>248,002</b>	<b>248,002</b>	<b>100.00%</b>	

(EXHIBIT 4)

- = Office of the Sheriff
- = Department
- = Division
- = Bureau
- = Unit or Squad
- = Administrative/Executive Officer



Alachua County Sheriff's Office

Chart of Accounts – Department/Division Listing - As of February 2014

**1010 – Office of the Sheriff – Sheriff Sadie Darnell/Chief Deputy David Huckstep**

1001 – General Administration – All Gen Admin accounts are handled by A&B

1020 – General Counsel – Cindy Weygant

1030 – Public Information Office – Sgt. Becky Butscher

1031-RAD Instructors (Fund# 107)

1040 – Office of Professional Standards – Captain Latrell Simmons

1050 – Trauma Intervention & Special Services – B/C Laura Knudson

3240 – Budget – Patty Justice, CPA, CFO

6001 – Department of the Jail –Major Charlie Lee

6010 – Security Division – Capt. Corey Warren

6050 – Support Services Division – Capt. Jeff Cloutier

6322 - Inmate Support Bureau (Classification & Programs) - B/C Hart-Wilhour

6411 –Transportation – Lt. Lee Hudson

6412 – Facility Support (Kitchen, Warehouse, etc.) – Lt. Lee Hudson

6430 - Booking Support Bureau – B/C Cheryl Stinson

**2000 – Major of Operations – Major Mike Fellows**

2101 –Patrol Operation Division Captain John Redmond

2110 – Patrol

2120 – Patrol Support Division Captain David Clark

2115 – K-9 Unit

2130 – School Crossing Guards

2131 – Juvenile Bureau (including Explorers & Teen Court) Lt. David Lee

2132 – Teen Driver Instructors (Fund# 155)

2199 – Operating Expenses for Patrol & Patrol Support (see below for Aviation)

2680 – Operating Expenses for Aviation

2201 – Criminal Investigation Division – Captain Keith Vermillion

2210 – Detective Bureau – Lt. Todd Kelley

2222 – Forensics – Lt. Todd Kelley

2223 – Criminal Intelligence Bureau – Lt. Todd Kelley

2290 – NOCB – Lt. Whitney Burnett (Lt. Scott Anderson)

**3000 – Major of Support Services – Major Karen Love**

3210 – Human Resources – B/C Louise Grimm

3220 – Property/Uniforms – B/C Diana Jacobs

3224 – Facilities/Buildings – B/C Diana Jacobs

3225 – Evidence – B/C Diana Jacobs

3230 – Fleet – B/C Diana Jacobs

3240 – Accounting & Budget (including Grants) – CFO Patty Justice

3260 – Records – B/C Linda Brown

3301 – Technical Services Division –Div. Mgr Jim Lanier

3309 – Communication Support Bureau – B/C Jennifer Altenburger

3310 – CCC Operations – B/C Pat Ford-Thomas

3311 – False Alarm Reduction Unit – B/C Jennifer Altenburger (Fund # 130)

3314 – Non-Shared Expenses – Div. Mgr. Jim Lanier

3321 – ACFR Radio Inter local – B/C John Moorhouse

3323 – Radio Shop – B/C John Moorhouse

3350 – ITU – B/C John Moorhouse

3401 – Judicial Services & Training Division – Captain Lori Stophel

3421 – Warrants – Lt. Mike Jones

3441 – Court Security Bureau – Lt. Mike Hanson

3442 – Civil Bureau – Lt. Alice Lee

3444 – Training Bureau – Lt Darrell Bessinger

3480 – Planning, Policy & Accreditation – Lt. Jack Jacobs

## ACSO Other Municipalities - LEO 2012-2013

(These numbers are included in the ACSO LEO Totals on the All Report Totals report)

Jurisdiction	Oct-12	Nov-12	Dec-12	Jan-13	Feb-13	Mar-13	Apr-13	May-13	Jun-13	Jul-13	Aug-13	Sep-13
Alachua	167	173	168	159	92	199	161	186	140	150	131	169
Archer	249	216	247	201	182	160	205	221	198	219	201	234
Gainesville	1120	1178	920	897	741	985	697	735	696	607	718	788
Hawthorne	215	254	193	237	146	266	142	137	201	159	143	219
High Springs	39	36	60	38	34	44	31	78	31	42	39	39
Lacrosse	31	50	35	44	32	42	43	32	42	50	54	43
Melrose	1	2	0	0	0	0	0	0	0	0	0	1
Micanopy	48	55	37	50	91	99	82	94	58	73	72	97
Newberry	408	723	445	508	360	469	392	403	385	441	418	498
Out of County	2	7	6	6	7	6	1	5	2	7	4	2
University Florida	12	2	4	2	0	7	4	7	2	10	11	16
Waldo	37	31	28	44	34	52	23	46	14	36	32	24
<b>Cities Total</b>	2329	2727	2143	2186	1719	2329	1781	1944	1769	1794	1823	2130
Unincorporated	6587	7193	6872	6888	5843	7131	6026	6570	5979	5748	5699	6014
<b>Grand Total</b>	8916	9920	9015	9074	7562	9460	7807	8514	7748	7542	7522	8144

Although "Out of County" and "University of Florida" are not truly Other Municipalities we will start listing them separately in order to capture at a glance these statistics as well.

(EXHIBIT 7)

Dirt-Time Report 10/1/2012 - 9/30/13

Total time in County and MSTU Participants	78,490	
Total time allocated	90,628	86.6%

Total time in County and MSTU Participants (excluding warrants and civil)	77,052	
Total time allocated (excluding warrants and civil)	87,501	88.1%

Total time in County and MSTU Participants (excluding warrants and civil and juvenile)	75,224	
Total time allocated (excluding warrants and civil and juvenile)	84,650	88.9%

---

ACSO MSTU Analysis -- Total Time -- CID Detectives		2301 hrs, 13 min
ALACHUA	30 hrs, 16 min	
ARCHER	34 hrs, 12 min	
BRADFORD	0 hrs, 34 min	
COUNTY	1405 hrs, 43 min	67%
DIXIE CO	0 hrs, 0 min	
GAINESVILLE	541 hrs, 10 min	
HAWTHORNE	37 hrs, 38 min	
HIGH SPRINGS	5 hrs, 33 min	
LACROSSE	10 hrs, 6 min	
LEVY	0 hrs, 0 min	
MICANOPY	7 hrs, 54 min	
NEWBERRY	65 hrs, 27 min	
PUTNAM	3 hrs, 23 min	
SARASOTA	0 hrs, 1 min	
UNION	15 hrs, 4 min	
UNIVERSITY OF FLORIDA	118 hrs, 51 min	
WALDO	25 hrs, 10 min	

ACSO MSTU Analysis -- Total Time -- AR Units		5893 hrs, 3 min
ALACHUA	60 hrs, 56 min	
ARCHER	108 hrs, 23 min	
COUNTY	4524 hrs, 49 min	85%
GAINESVILLE	627 hrs, 39 min	
HAWTHORNE	112 hrs, 2 min	
HIGH SPRINGS	14 hrs, 13 min	
LACROSSE	3 hrs, 49 min	
LEVY	4 hrs, 45 min	
MICANOPY	22 hrs, 9 min	
NEWBERRY	280 hrs, 7 min	
ST JOHNS	0 hrs, 10 min	
UNION	15 hrs, 14 min	
UNIVERSITY OF FLORIDA	60 hrs, 17 min	
WALDO	58 hrs, 23 min	

ACSO MSTU Analysis -- Total Time -- FSTs (Patrol)		6680 hrs, 3 min
ALACHUA	24 hrs, 0 min	
ARCHER	109 hrs, 17 min	
COUNTY	5270 hrs, 0 min	89%
GAINESVILLE	578 hrs, 37 min	
HAWTHORNE	206 hrs, 52 min	
HIGH SPRINGS	10 hrs, 0 min	
LACROSSE	6 hrs, 35 min	
LEVY	10 hrs, 24 min	
MICANOPY	30 hrs, 36 min	
NEWBERRY	381 hrs, 49 min	
UNIVERSITY OF FLORIDA	42 hrs, 14 min	
WALDO	9 hrs, 33 min	

ACSO MSTU Analysis -- Total Time -- Forensics		606 hrs, 40 min
alachua	12 hrs, 56 min	
ARCHER	13 hrs, 2 min	
COUNTY	415 hrs, 55 min	78%

(EXHIBIT 7)

GAINESVILLE	88 hrs, 54 min	
HAWTHORNE	24 hrs, 2 min	
HIGH SPRINGS	4 hrs, 23 min	
LACROSSE	7 hrs, 33 min	
NEWBERRY	19 hrs, 46 min	
UNION	2 hrs, 9 min	
UNIVERSITY OF FLORIDA	16 hrs, 9 min	
WALDO	1 hrs, 45 min	
ACSO MSTU Analysis -- Total Time -- AK Units		3298 hrs, 22 min
ALACHUA	31 hrs, 10 min	
ARCHER	58 hrs, 18 min	
CLAY	0 hrs, 10 min	
COUNTY	2287 hrs, 30 min	78%
Daytona Beach	14 hrs, 38 min	
GAINESVILLE	538 hrs, 22 min	
HAWTHORNE	49 hrs, 41 min	
HIGH SPRINGS	33 hrs, 13 min	
LACROSSE	1 hrs, 32 min	
MICANOPY	12 hrs, 43 min	
NEWBERRY	164 hrs, 35 min	
PUTNAM	9 hrs, 59 min	
UNION	13 hrs, 36 min	
UNIVERSITY OF FLORIDA	61 hrs, 20 min	
WALDO	21 hrs, 28 min	
ACSO MSTU Analysis -- Total Time -- DTF		1042 hrs, 26 min
ALACHUA	38 hrs, 11 min	
COUNTY	779 hrs, 2 min	78%
GAINESVILLE	166 hrs, 20 min	
HAWTHORNE	22 hrs, 41 min	
HIGH SPRINGS	1 hrs, 55 min	
MARION	0 hrs, 3 min	
MICANOPY	4 hrs, 20 min	
NEWBERRY	9 hrs, 49 min	
UNION	6 hrs, 20 min	
UNIVERSITY OF FLORIDA	12 hrs, 38 min	
WALDO	1 hrs, 3 min	
ACSO MSTU Analysis -- Total Time -- AIR1		177 hrs, 18 min
ALACHUA	3 hrs, 17 min	
ARCHER	1 hrs, 7 min	
CLAY	2 hrs, 40 min	
COUNTY	116 hrs, 25 min	67%
GAINESVILLE	43 hrs, 8 min	
GILCHRIST	0 hrs, 32 min	
HAWTHORNE	0 hrs, 5 min	
HIGH SPRINGS	4 hrs, 29 min	
LEVY	1 hrs, 27 min	
MICANOPY	0 hrs, 42 min	
NEWBERRY	1 hrs, 30 min	
SUWANNEE	0 hrs, 33 min	
UNIVERSITY OF FLORIDA	1 hrs, 18 min	
WALDO	0 hrs, 1 min	
ACSO MSTU Analysis -- Total Time -- Patrol Zones and Patrol Sups		64653 hrs, 4 min
ALACHUA	573 hrs, 45 min	
ARCHER	1685 hrs, 18 min	
BRADFORD	4 hrs, 25 min	
CLAY	2 hrs, 49 min	
COLUMBIA	5 hrs, 3 min	
COUNTY	51345 hrs, 1 min	91%
DADE	0 hrs, 24 min	



(EXHIBIT 7)

DIXIE CO	4 hrs, 54 min
GAINESVILLE	3665 hrs, 49 min
GILCHRIST	1 hrs, 28 min
HAWTHORNE	1828 hrs, 51 min
HIGH SPRINGS	248 hrs, 55 min
LACROSSE	296 hrs, 20 min
LEVY	5 hrs, 13 min
MARION	2 hrs, 16 min
MELROSE	1 hrs, 49 min
MICANOPY	499 hrs, 53 min
NEWBERRY	3877 hrs, 40 min
PUTNAM	7 hrs, 41 min
SUWANNEE	7 hrs, 20 min
UNION	29 hrs, 17 min
UNIVERSITY OF FLORIDA	211 hrs, 48 min
WALDO	346 hrs, 28 min
WINDSOR	0 hrs, 27 min

ACSO MSTU Analysis -- Total Time -- JRB		2851 hrs, 15 min
ALACHUA	261 hrs, 39 min	
ARCHER	11 hrs, 50 min	
COUNTY	1373 hrs, 41 min	64%
GAINESVILLE	625 hrs, 9 min	
HAWTHORNE	189 hrs, 19 min	
HIGH SPRINGS	21 hrs, 15 min	
MARION	6 hrs, 41 min	
MICANOPY	7 hrs, 20 min	
NEWBERRY	255 hrs, 47 min	
UNION	8 hrs, 33 min	
UNIVERSITY OF FLORIDA	70 hrs, 49 min	
WALDO	19 hrs, 7 min	

ACSO MSTU Analysis -- Total Time -- Civil		752 hrs, 27 min
ALACHUA	2 hrs, 41 min	
ARCHER	5 hrs, 37 min	
COUNTY	293 hrs, 36 min	43%
GAINESVILLE	358 hrs, 11 min	
HAWTHORNE	16 hrs, 24 min	
HIGH SPRINGS	0 hrs, 29 min	
Lacrosse	1 hrs, 51 min	
LEVY	4 hrs, 49 min	
NEWBERRY	13 hrs, 5 min	
UNIVERSITY OF FLORIDA	54 hrs, 32 min	
WALDO	1 hrs, 6 min	

ACSO MSTU Analysis -- Total Time -- Warrants		2375 hrs, 52 min
ALACHUA	59 hrs, 45 min	
ARCHER	23 hrs, 27 min	
COLUMBIA	12 hrs, 43 min	
COUNTY	1004 hrs, 34 min	47%
GAINESVILLE	1073 hrs, 5 min	
HAWTHORNE	22 hrs, 55 min	
HIGH SPRINGS	31 hrs, 35 min	
LACROSSE	2 hrs, 33 min	
MARION	14 hrs, 12 min	
MICANOPY	9 hrs, 20 min	
NEWBERRY	62 hrs, 0 min	
PUTNAM	5 hrs, 51 min	
UNION	0 hrs, 14 min	
UNIVERSITY OF FLORIDA	45 hrs, 34 min	
WALDO	7 hrs, 57 min	

**COMPARISON OF PAYMENT FOR SERVICES FOR LAW ENFORCEMENT FUNCTION  
UNINCORPORATED PAYEE VERSUS INCORPORATED (city resident) PAYEE  
ANALYSIS OF AMOUNT PAID AT VARIOUS PERCENTAGE COST SPLIT\$  
Updated June 9, 2014**

### Basic example assuming \$1 million in costs

Based on call load data and "dirt time", costs allocated as follows:

**Percentage split needed to fund Law Enforcement Patrol equal to "Dirt Time" report.**

MSTU-LE	General Fund		
79.85%	20.15%		
Unincorporated residents would pay total of:			
100% of MSTU funding comes from unincorporated residents		\$	798,500
45.42% of General Fund funding comes from unincorporated		\$	91,521
<b>TOTAL PAID BY UNINCORPORATED RESIDENTS</b>		<b>\$</b>	<b>890,021</b>
			<b>89.00%</b>
Incorporated (City) residents would pay total of:			
54.58% of General Fund funding comes from incorporated (City)		\$	109,979
<b>TOTAL PAID BY INCORPORATED (CITY) RESIDENTS</b>		<b>\$</b>	<b>109,979</b>
			<b>11.00%</b>

**School Resource Officer Allocation Split**

<b>School Type</b>	<b>Enrollment</b>	<b>ASO Patrols</b>	<b>City Patrols</b>
Elementary Schools	12,241	6,635	5,606
High Schools	6,740	5,074	1,666
Middle Schools	5,608	5,608	-
<b>Totals</b>	<b>24,589</b>	<b>17,317</b>	<b>7,272</b>

<b>School Enrollment Splits (1)</b>		
ASO Patrol	17,317	70.43%
Municipality Patrol	7,272	29.57%
<b>Total Public School Enrollment</b>	<b>24,589</b>	

<b>Population Split (2)</b>		
City (non MSTU LE participants)	141,060	56.88%
Unincorporated + Participating Cities	106,942	43.12%
<b>Total Alachua County Population</b>	<b>248,002</b>	

<b>Taxable Value (3)</b>		
Municipalities	6,146,755,356	54.58%
Unincorporated + Participating Cities	5,115,267,589	45.42%
<b>Total General Fund Taxable Value</b>	<b>11,262,022,945</b>	

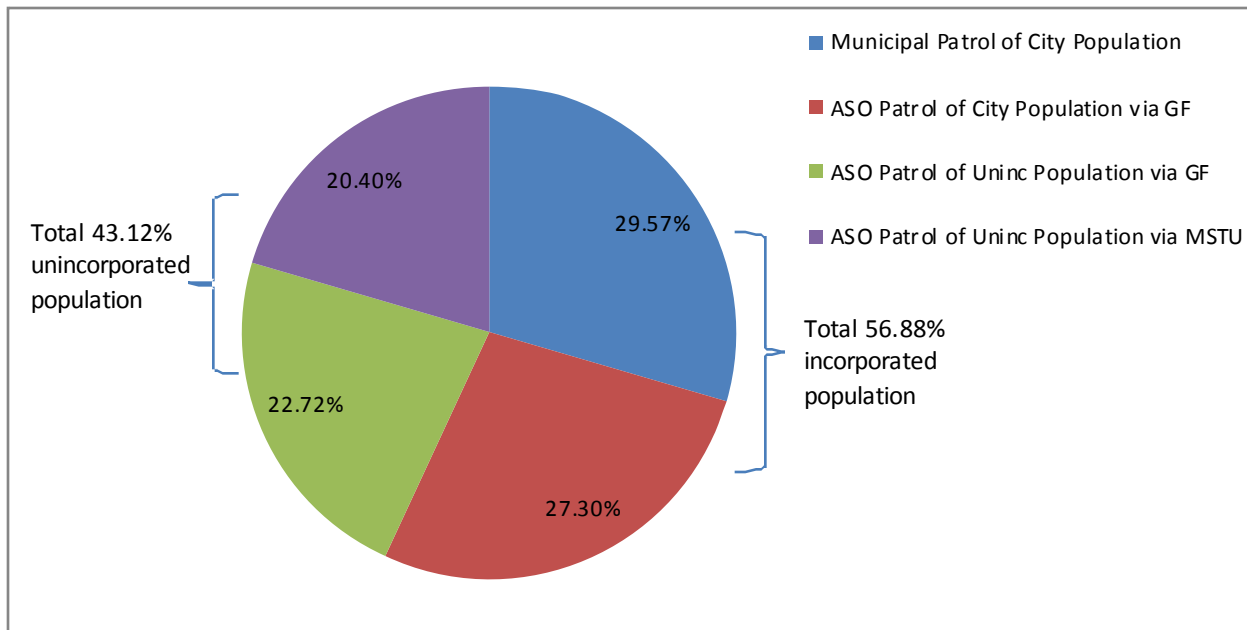
(1) Alachua County School Board as of 5/21/2014

(2) <http://edr.state.fl.us/Content/population-demographics/data/index.cfm> (BEER April 1, 2013 estimates)

(3) 2013 Certified Tax Roll

**Countywide Patrol Splits**

Municipal Patrol of City Population	29.57%	See School Enrollment Splits
ASO Patrol of City Population via GF	27.30%	City Population portion (56.88%) less Municipalit Patrol portion (29.57%)
ASO Patrol of Uninc Population via GF	22.72%	Divide ASO Patrol of City Population (27.30%) by Municipalities taxable value portion of GF (54.58%) times Uninc and Participating Cities taxable value portion of GF (45.42%).
ASO Patrol of Uninc Population via MSTU	20.40%	Uninc and Participating Cities population less GF-ASO Patrol of Uninc Pop



## School Resource Officer Example Funding Split

### Funding Split - Hypothetical \$1 Million Countywide Budget

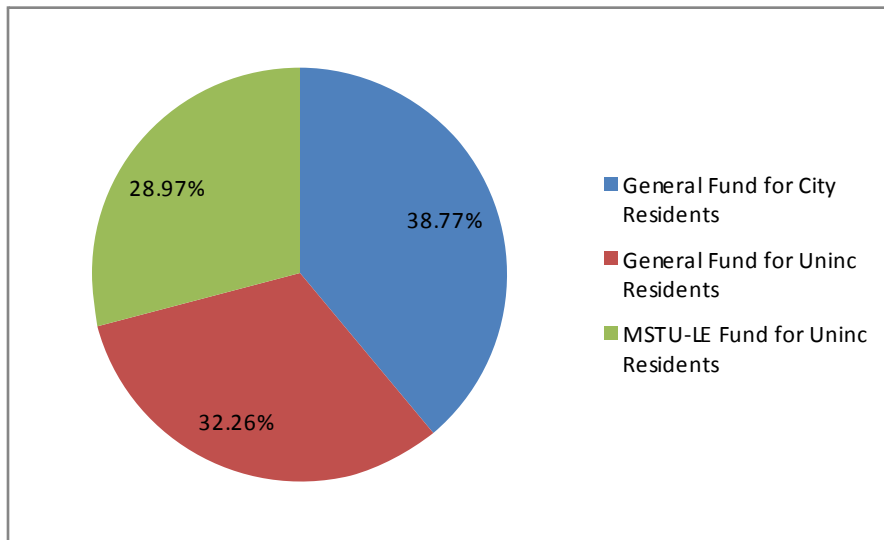
City Resident Portion (based on Pop)	\$ 568,786	56.88%
Unincorporated Resident (based on Pop)	\$ 431,214	43.12%
Total SRO Countywide Budget	\$ 1,000,000	

### Countywide Funding Split

City Resident pay for City Patrol via City GF	\$ 295,742		
City Resident pay for ASO Patrol via GF	\$ 273,044	\$ 568,786	City Resident Portion
Uninc Resident pay for ASO Patrol via GF	\$ 227,224		
Uninc Resident pay for ASO Patrol via MSTU	\$ 203,990	\$ 431,214	Uninc Resident Portion
	\$ 1,000,000		

### Just BoCC Funding Split

General Fund for City Residents	\$ 273,044	38.77%	
General Fund for Uninc Residents	\$ 227,224	32.26%	71.03% Total General Fund
MSTU-LE Fund for Uninc Residents	\$ 203,990	28.97%	28.97% Total MSTU-LE
Total BoCC Funding	\$ 704,258	100%	100%



(EXHIBIT 10)

**Support Split Methodology**

Support Split for costs not allocated to Jail/CCC/Judicial

FTE's	Division
210.25	LE Patrol
92.00	LE General Fund
6.50	Fleet
18.50	LE Support II
44.50	LE Juvenile
346.00	Jail
113.00	CCC
38.00	Judicial
868.75	
3.00	Law Enforcement Support FTE's

Percentage Splits			FTE Splits		
GF		MSTU	GF		MSTU
	20%	80%	42.37		167.88
	100%	0%	92.00		-
	45%	55%	2.94		3.56
	48%	52%	8.89		9.61
	71%	29%	31.61		12.89
	100%	0%	346.00		-
	100%	0%	113.00		-
	100%	0%	38.00		-
			674.81		193.94
			77.68%		22.32%

**Support Split Methodology II**

Support split because costs are already allocated to Jail/CCC/Judicial

FTE's	Division	Percentage Splits		FTE Splits	
		GF	MSTU	GF	MSTU
210.25	LE Patrol	20%	80%	42.37	167.88
92.00	LE General Fund	100%	0%	92.00	-
3.00	LE Support	78%	22%	2.33	0.67
6.50	Fleet	45%	55%	2.94	3.56
44.50	LE Juvenile	71%	29%	31.61	12.89
356.25				171.24	185.01
				48.07%	51.93%

18.50 Law Enforcement Support II FTE's

**Fleet Split Methodology**

Vehicles	Division
320.00	LE Patrol
48.00	LE General Fund
42.00	LE Juvenile
1.00	LE Support
5.00	LE Support II
35.00	Jail
8.00	CCC
35.00	Judicial
494.00	

Percentage Splits			FTE Splits		
GF		MSTU	GF		MSTU
	20%	80%	64.48		255.52
	100%	0%	48.00		-
	71%	29%	29.83		12.17
	78%	22%	0.78		0.22
	48%	52%	2.40		2.60
	100%	0%	35.00		-
	100%	0%	8.00		-
	100%	0%	35.00		-
			223.49		270.51
			45.24%		54.76%

## (EXHIBIT 11)

## Applied to FY14 Budget Request

		Law Enforcement	Personnel	Operating	Capital	Less Revenue	Total	GF	MSTU	GF Split	MSTU Split
FTE	Vehicles	Bureaus									
1.00		1001 Office of Sheriff	\$ 186,822	\$ 640,525			\$ 827,347	100%	0%	\$ 827,347	\$ -
3.00	2.00	1010 Office of Sheriff	296,094	3,469			299,563	100%	0%	299,563	-
1.00		1020 Staff Attorney	125,651	12,450			138,101	100%	0%	138,101	-
4.00	3.00	1030 Public Information Officer	255,344	15,782			271,126	100%	0%	271,126	-
6.00	6.00	1040 Office of Professional Standards	499,568	6,095			505,663	100%	0%	505,663	-
6.00	4.00	1050 Trauma Intervention	329,842	4,000			333,842	100%	0%	333,842	-
2.00	1.00	2000 Major of Operations	182,151	380			182,531	20%	80%	36,780	145,751
2.00	1.00	2101 Patrol Ops Administrator	171,403				171,403	20%	80%	34,538	136,865
91.50	194.00	2110 Patrol Ops	5,725,183	91,912		(6,870)	5,810,225	20%	80%	1,170,760	4,639,465
9.00	12.00	2115 Patrol Support K9	692,207				692,207	20%	80%	139,480	552,727
29.00	23.00	2120 Patrol Support	1,781,569	39,673			1,821,242	20%	80%	366,980	1,454,262
9.50		2130 Patrol Crossing Guards	292,328				292,328	71%	29%	207,641	84,687
35.00	42.00	2131 Patrol School Res Officers	2,281,616	7,240		(723,531)	1,565,325	71%	29%	1,111,850	453,475
2.00	1.00	2201 Criminal Investigation Admin	175,780				175,780	20%	80%	35,420	140,360
30.00	35.00	2210 Detectives	2,096,990	16,879			2,113,869	20%	80%	425,945	1,687,924
9.00	16.00	2222 Forensics	597,020	12,196			609,216	20%	80%	122,757	486,459
8.00	2.00	2223 Criminal Intelligence	733,082	2,925			736,007	20%	80%	148,305	587,702
16.00	19.00	2290 Narcotics Drug Task Force	1,120,274				1,120,274	20%	80%	225,735	894,539
1.00	1.00	3000 Support Services Major	117,083				117,083	78%	22%	90,950	26,133
1.00		3201 Administrative Services	145,437				145,437	78%	22%	112,975	32,462
5.00	3.00	3210 Human Resources	311,614	64,846			376,460	48%	52%	180,964	195,496
2.00		3220 Property	105,414	182,020			287,434	20%	80%	57,918	229,516
		3224 Facilities & Building		28,654			28,654	100%	0%	28,654	-
3.50		3225 Evidence	184,067	9,244			193,311	20%	80%	38,952	154,359
6.50	24.00	3230 Fleet	402,071	1,474,169	1,400,000		3,276,240	45%	55%	1,482,171	1,794,069
5.00		3240 Fiscal	297,117	5,315			302,432	48%	52%	145,379	157,053
34.00	1.00	3260 Records	1,353,541	48,739		(44,008)	1,358,272	100%	0%	1,358,272	-
0.50		3323 Radio Technician	20,286	57,050	64,745		142,081	20%	80%	28,629	113,452
7.50	1.00	3350 Information Technology	486,914	1,069,138	80,000		1,636,052	48%	52%	786,450	849,602
0.75	1.00	3401 Judicial Services/Traing Capt	79,593	200			79,793	20%	80%	16,078	63,715
18.00	17.00	3421 Warrants	1,259,347	101,403		(608)	1,360,142	100%	0%	1,360,142	-
19.00	15.00	3442 Civil Bureau	1,192,838	7,864		(333,379)	867,323	100%	0%	867,323	-
5.00	15.00	3444 Training Bureau	391,333	28,650		(59,921)	360,062	20%	80%	72,552	287,510
1.00		3470 Grants & Legal Coord	63,753	400			64,153	78%	22%	49,834	14,319
1.00	1.00	3480 Planning, Policy & Accreditation	43,965	2,600	-	-	46,565	48%	52%	22,384	24,181
374.75	440.00	Law Enforcement	\$ 23,997,297	\$ 3,933,818	\$ 1,544,745	\$ (1,168,317)	\$ 28,307,543			\$ 13,101,462	\$ 15,206,081
										46.28%	53.72%

	GF	MSTU
Dirt Time Splits	20.15%	79.85%
SRO Splits	71.03%	28.97%
Fleet Splits	45.24%	54.76%
Support Splits	77.68%	22.32%
Support II Splits	48.07%	51.93%

need to update manually when recalculated

Applied to FY17 Budget Request Funded

Law Enforcement											
FTE	Vehicles	Bureaus	Personnel	Operating	Capital	Less Revenue	Total	GF	MSTU	GF Split	MSTU Split
1.00		1001 Office of Sheriff	\$ 200,362	\$ 532,311			\$ 732,673	100%	0%	\$ 732,673	\$ -
3.00		1010 Office of Sheriff	335,261	4,159			339,420	100%	0%	339,420	-
1.00		1020 Staff Attorney	162,745	10,605			173,350	100%	0%	173,350	-
4.00		1030 Public Information Officer	311,816	22,045			333,861	100%	0%	333,861	-
5.00	8.00	1040 Office of Professional Standards	414,618	5,965			420,583	100%	0%	420,583	-
5.00	4.00	1050 Trauma Intervention	337,027	4,000			341,027	100%	0%	341,027	-
1.00		2000 Major of Operations	152,422	475			152,897	22%	78%	33,645	119,252
2.00		2101 Patrol Ops Administrator	202,379				202,379	22%	78%	44,534	157,845
99.00	240.00	2110 Patrol Ops	7,550,251				7,550,251	17%	83%	1,312,989	6,237,262
-		2111 Patrol Support COPS	316,008				316,008	43%	57%	135,378	180,630
9.00		2115 Patrol Support K9	851,586				851,586	52%	48%	445,805	405,781
20.00	8.00	2120 Patrol Support	850,730				850,730	17%	83%	147,942	702,788
		2120 A Patrol Support Aviation	160,738				160,738	90%	10%	144,086	16,652
9.50		2130 Patrol Crossing Guards	304,565				304,565	18%	82%	56,162	248,403
23.00		2131 Patrol School Res Officers	1,903,972	7,312		(333,591)	1,577,693	18%	82%	290,927	1,286,766
		2198 Patrol Aviation		38,808			38,808	90%	10%	34,787	4,021
		2199 Patrol Support		95,069			95,069	17%	83%	16,532	78,537
2.00	2.00	2201 Criminal Investigation Admin	170,476				170,476	42%	58%	71,677	98,799
30.00	31.00	2210 Detectives	2,597,115	24,728			2,621,843	20%	80%	532,234	2,089,609
1.00	1.00	2211 Detectives Cold Case	66,324	900			67,224	20%	80%	13,646	53,578
10.00	12.00	2222 Forensics	804,153	13,118			817,271	20%	80%	165,906	651,365
5.00	2.00	2223 Criminal Intelligence	335,367	2,250			337,617	90%	10%	302,640	34,977
15.00	18.00	2290 Narcotics Drug Task Force	1,254,346	10,000			1,264,346	90%	10%	1,133,360	130,986
2.00		3000 Support Services Major	207,042	300			207,342	75%	25%	156,419	50,923
5.00	3.00	3210 Human Resources	378,281	61,421			439,702	39%	61%	173,506	266,196
2.00		3220 Property	125,869	239,785			365,654	20%	80%	74,228	291,426
		3224 Facilities & Building		25,962			25,962	100%	0%	25,962	-
3.50		3225 Evidence	204,839	12,449			217,288	20%	80%	44,109	173,179
8.00	20.00	3230 Fleet	522,307	1,271,597	900,000		2,693,904	40%	60%	1,083,488	1,610,416
6.00		3240 Fiscal	454,844	4,926			459,770	39%	61%	181,425	278,345
30.00	1.00	3260 Records	1,347,137	47,180		(60,000)	1,334,317	100%	0%	1,334,317	-
		3323 Radio Technician		48,050	59,704		107,754	17%	83%	18,738	89,016
6.50	2.00	3350 Information Technology	577,016	1,118,301	45,000		1,740,317	39%	61%	686,729	1,053,588
0.75		3401 Judicial Services/Traing Capt	107,651	250			107,901	100%	0%	107,901	-
17.00	18.00	3421 Warrants	1,491,681	106,575			1,598,256	100%	0%	1,598,256	-
18.00	15.00	3442 Civil Bureau	1,330,623	7,246		(400,000)	937,869	100%	0%	937,869	-
5.50	8.00	3444 Training Bureau	520,682	37,280		(60,000)	497,962	17%	83%	86,596	411,366
		3470 Grants & Legal Coord					-	75%	25%	-	-
		3480 Planning, Policy & Accreditation		1,100	-	-	1,100	39%	61%	434	666
349.75	393.00	Law Enforcement	\$ 26,550,233	\$ 3,754,167	\$ 1,004,704	\$ (853,591)	\$ 30,455,513	Cross checked			
		Not funded*	\$ 397,511		\$ 500,000			Newberry Contract			
		2017 Budget Request	\$ 26,947,744		\$ 1,504,704						
										\$ 13,733,142	\$ 16,722,371
										\$ -	\$ (740,000)
										\$ 13,733,142	\$ 15,982,371
										46.22%	53.78%

\* 5 Patrol, CIT Training, Vehicles and Other minor variance



### Support Split Methodology

Support Split for costs not allocated to Jail/CCC/Judicial

FTE's	Division	Percentage Splits		FTE Splits	
		GF	MSTU	GF	MSTU
205.00	LE Patrol	17%	83%	35.65	169.35
84.75	LE General Fund	100%	0%	84.75	-
8.00	Fleet	40%	60%	3.22	4.78
17.50	LE Support II	39%	61%	6.91	10.59
32.50	LE Juvenile	18%	82%	5.99	26.51
363.00	Jail	100%	0%	363.00	-
112.00	CCC	100%	0%	112.00	-
37.25	Judicial	100%	0%	37.25	-
860.00				648.77	211.23
				75.44%	24.56%

	GF	MSTU	
Patrol Dirt Time	17.39%	82.61%	Tax Ratio
COPS Dirt Time	42.84%	57.16%	Tax Ratio
K9 Dirt Time	52.35%	47.65%	Tax Ratio
Detective FEP	20.30%	79.70%	Tax Ratio
Joint GPD	89.64%	10.36%	Tax Ratio
SRO Splits	18.44%	81.56%	Pop Served
Fleet Splits	40.22%	59.78%	Adjacent Calcs
Support Splits	75.44%	24.56%	Adjacent Calcs
Support II Splits	39.46%	60.54%	Adjacent Calcs
need to update manually when recalculated			

2.00 Law Enforcement Support FTE's

### Fleet Split Methodology

Vehicles	Division	Percentage Splits		FTE Splits	
		GF	MSTU	GF	MSTU
322.00	LE Patrol	17%	83%	56.00	266.00
46.00	LE General Fund	100%	0%	46.00	-
-	LE Juvenile	18%	82%	-	-
-	LE Support	75%	25%	-	-
5.00	LE Support II	39%	61%	1.97	3.03
38.00	Jail	100%	0%	38.00	-
6.00	CCC	100%	0%	6.00	-
33.00	Judicial	100%	0%	33.00	-
450.00				180.97	269.03
				40.22%	59.78%

20.00 Fleet Vehicles

### Support Split Methodology II

Support split because costs are already allocated to Jail/CCC/Judicial

FTE's	Division	Percentage Splits		FTE Splits	
		GF	MSTU	GF	MSTU
205.00	LE Patrol	17%	83%	35.65	169.35
84.75	LE Gen Fund	100%	0%	84.75	-
2.00	LE Support	75%	25%	1.51	0.49
8.00	Fleet	40%	60%	3.22	4.78
32.50	LE Juvenile	18%	82%	5.99	26.51
332.25				131.12	201.13
				39.46%	60.54%

17.50 Law Enforcement Support II FTE's

**PATROL**

\* Unincorporated TV percentage includes cities that have opted into the MSTU-Law Fund plus Newberry Contract

Law Enforcement patrol cost	\$ 1,000,000
-----------------------------	--------------

Unincorporated residents to pay percentage costs equal to -	90.3%	\$	903,000
City residents to pay percentage costs equal to -	9.7%	\$	97,000

Percentage split needed to fund Law Enforcement Patrol equal to "Dirt Time" report.			
MSTU-LE	General Fund		
82.61%	17.39%		
Unincorporated residents would pay total of:			
100% of MSTU funding comes from unincorporated residents		\$	826,100
44.22% of General Fund funding comes from unincorporated		\$	76,899
<b>TOTAL PAID BY UNINCORPORATED RESIDENTS</b>		<b>\$</b>	<b>902,999</b>
			<b>90.30%</b>
Incorporated (City) residents would pay total of:			
55.78% of General Fund funding comes from incorporated (City)		\$	97,001
<b>TOTAL PAID BY INCORPORATED (CITY) RESIDENTS</b>		<b>\$</b>	<b>97,001</b>
			<b>9.70%</b>

**COPS**

	Unincorporated*	Incorporated
<b>Note: Countywide taxable value % split:</b>	44.22%	55.78%

### Basic example assuming \$1 million in costs

Unincorporated residents to pay percentage costs equal to -	76.1%	\$	761,000
City residents to pay percentage costs equal to -	23.9%	\$	239,000

MSTU-LE	General Fund		
57.16%	42.84%		
Unincorporated residents would pay total of:			
100% of MSTU funding comes from unincorporated residents		\$	571,600
44.22% of General Fund funding comes from unincorporated		\$	189,438
<b>TOTAL PAID BY UNINCORPORATED RESIDENTS</b>		<b>\$</b>	<b>761,038</b>
			<b>76.10%</b>
Incorporated (City) residents would pay total of:			
55.78% of General Fund funding comes from incorporated (City)		\$	238,962
<b>TOTAL PAID BY INCORPORATED (CITY) RESIDENTS</b>		<b>\$</b>	<b>238,962</b>
			<b>23.90%</b>

**K9**

Unincorporated\*

Incorporated

44.22%

55.78%

\* Unincorporated TV percentage includes cities that have opted into the MSTU-Law Fund plus Newberry Contract

Law Enforcement patrol cost

\$ 1,000,000

Unincorporated residents to pay percentage costs equal to -

70.8%

\$

708,000

City residents to pay percentage costs equal to -

29.2%

\$

292,000

## MSTU-LE

47.65%

## General Fund

52.35%

100% of MSTU funding comes from unincorporated residents

\$

476,500

44.22% of General Fund funding comes from unincorporated

\$

231,492

\$	707,992
----	---------

70.80%

55.78% of General Fund funding comes from incorporated (City)

\$

292,008

\$	292,008
----	---------

**29.20%**

**COMPARISON OF PAYMENT FOR SERVICES FOR LAW ENFORCEMENT FUNCTION  
UNINCORPORATED PAYEE VERSUS INCORPORATED (city resident) PAYEE  
ANALYSIS OF AMOUNT PAID AT VARIOUS PERCENTAGE COST SPLIT**

Updated March 1, 2017

**GPD Joint Effort**

**Note: Countywide taxable value % split:**

	Unincorporated*	Incorporated
	44.22%	55.78%

\* Unincorporated TV percentage includes cities that have opted into the MSTU-Law Fund plus Newberry Contract

**Basic example assuming \$1 million in costs**

Law Enforcement patrol cost \$ 1,000,000

Based on call load data and "dirt time", costs allocated as follows:

Unincorporated residents to pay percentage costs equal to -	50.0%	\$	500,000
City residents to pay percentage costs equal to -	50.0%	\$	500,000

**Percentage split needed to fund Law Enforcement Patrol equal to "Dirt Time" report.**

MSTU-LE	General Fund		
10.36%	89.64%		
Unincorporated residents would pay total of:			
100% of MSTU funding comes from unincorporated residents		\$	103,600
44.22% of General Fund funding comes from unincorporated		\$	396,388
<b>TOTAL PAID BY UNINCORPORATED RESIDENTS</b>		<b>\$</b>	<b>499,988</b>
			<b>50.00%</b>
Incorporated (City) residents would pay total of:			
55.78% of General Fund funding comes from incorporated (City)		\$	500,012
<b>TOTAL PAID BY INCORPORATED (CITY) RESIDENTS</b>		<b>\$</b>	<b>500,012</b>
			<b>50.00%</b>

**COMPARISON OF PAYMENT FOR SERVICES FOR LAW ENFORCEMENT FUNCTION  
UNINCORPORATED PAYEE VERSUS INCORPORATED (city resident) PAYEE  
ANALYSIS OF AMOUNT PAID AT VARIOUS PERCENTAGE COST SPLIT\$**

Updated March 1, 2017

**Detective Forensics Evidence Property**

**Note: Countywide taxable value % split:**

	Unincorporated*	Incorporated
	52.22%	47.78%

\* Unincorporated TV percentage includes cities that have opted into the MSTU-Law Fund plus Newberry Contract  
This Scenario was adjusted to account for Non-Gainesville Municipalities that do not have Advanced Services

**Basic example assuming \$1 million in costs**

Law Enforcement patrol cost \$ 1,000,000

Based on call load data and "dirt time", costs allocated as follows:

Unincorporated residents to pay percentage costs equal to -	90.3%	\$	903,000
City residents to pay percentage costs equal to -	9.7%	\$	97,000

**Percentage split needed to fund Law Enforcement Patrol equal to "Dirt Time" report.**

MSTU-LE	General Fund		
79.70%	20.30%		
Unincorporated residents would pay total of:			
100% of MSTU funding comes from unincorporated residents		\$	797,000
52.22% of General Fund funding comes from unincorporated		\$	106,007
<b>TOTAL PAID BY UNINCORPORATED RESIDENTS</b>		<b>\$</b>	<b>903,007 90.30%</b>
Incorporated (City) residents would pay total of:			
47.78% of General Fund funding comes from incorporated (City)		\$	96,993
<b>TOTAL PAID BY INCORPORATED (CITY) RESIDENTS</b>		<b>\$</b>	<b>96,993 9.70%</b>

## Dirt-Time Report 10/1/2015 - 9/30/16

### **ACSO MSTU Analysis -- Total Time -- Patrol Zones and Patrol Sups**

ALACHUA	494.00 hrs, 17.00 min	68619 hrs, 55 min
ARCHER	1,563.00 hrs, 0.00 min	
BAKER	0.00 hrs, 9.00 min	
BRADFORD	6.00 hrs, 56.00 min	
COLUMBIA	0.00 hrs, 35.00 min	
COUNTY	53,936.00 hrs, 9.00 min	90.3%
DIXIE	41.00 hrs, 21.00 min	
GAINESVILLE	3,049.00 hrs, 19.00 min	
GILCHRIST	5.00 hrs, 53.00 min	
HAWTHORNE	2,160.00 hrs, 44.00 min	
HIGH SPRINGS	377.00 hrs, 38.00 min	
LACROSSE	205.00 hrs, 21.00 min	
LEVY	1.00 hrs, 11.00 min	
MARION	36.00 hrs, 43.00 min	
MICANOPY	423.00 hrs, 11.00 min	
NEWBERRY	4,303.00 hrs, 6.00 min	
PUTNAM	3.00 hrs, 21.00 min	
UNION	4.00 hrs, 22.00 min	
UNIVERSITY OF FLORIDA	855.00 hrs, 9.00 min	
WALDO	1,151.00 hrs, 18.00 min	

### **ACSO MSTU Analysis -- Total Time -- FSTs (Patrol)**

ALACHUA	35.00 hrs, 23.00 min	5265 hrs, 37 min
ARCHER	92.00 hrs, 38.00 min	
BRADFORD	0.00 hrs, 52.00 min	
COUNTY	4,257.00 hrs, 51.00 min	88.8%
GAINESVILLE	230.00 hrs, 43.00 min	
HAWTHORNE	109.00 hrs, 10.00 min	
HIGH SPRINGS	22.00 hrs, 17.00 min	
LACROSSE	3.00 hrs, 52.00 min	
MICANOPY	17.00 hrs, 44.00 min	
NEWBERRY	303.00 hrs, 40.00 min	
UNIVERSITY OF FLORIDA	129.00 hrs, 3.00 min	
WALDO	62.00 hrs, 18.00 min	

### **ACSO MSTU Analysis -- Total Time -- CID Detectives**

ALACHUA	13.00 hrs, 16.00 min	2657 hrs, 42 min
ARCHER	13.00 hrs, 38.00 min	
Bronson	0.00 hrs, 1.00 min	
COLUMBIA	3.00 hrs, 34.00 min	
COUNTY	1,641.00 hrs, 50.00 min	66.6%
DIXIE	10.00 hrs, 13.00 min	
GAINESVILLE	273.00 hrs, 19.00 min	
HAWTHORNE	25.00 hrs, 21.00 min	
HIGH SPRINGS	12.00 hrs, 53.00 min	
LACROSSE	0.00 hrs, 29.00 min	
LEVY	17.00 hrs, 40.00 min	
MARION	4.00 hrs, 5.00 min	
MICANOPY	11.00 hrs, 23.00 min	
NEWBERRY	91.00 hrs, 43.00 min	
UNIVERSITY OF FLORIDA	520.00 hrs, 36.00 min	
WALDO	17.00 hrs, 34.00 min	

**ACSO MSTU Analysis -- Total Time -- COPs Units**

ALACHUA  
 ARCHER  
 COUNTY  
 DIXIE  
 GAINESVILLE  
 GILCHRIST  
 HAWTHORNE  
 HIGH SPRINGS  
 LACROSSE  
 MARION  
 MICANOPY  
 NEWBERRY  
 UNIVERSITY OF FLORIDA  
 WALDO

<b>Within Bureau 21</b>	3823 hrs, 45 min
84.00 hrs, 43.00 min	
28.00 hrs, 34.00 min	
2,672.00 hrs, 37.00 min	76.1%
4.00 hrs, 57.00 min	
429.00 hrs, 0.00 min	
3.00 hrs, 50.00 min	
54.00 hrs, 43.00 min	
8.00 hrs, 46.00 min	
42.00 hrs, 17.00 min	
0.00 hrs, 47.00 min	
19.00 hrs, 11.00 min	
98.00 hrs, 33.00 min	
347.00 hrs, 43.00 min	
27.00 hrs, 57.00 min	

**ACSO MSTU Analysis -- Total Time -- Forensics**

ALACHUA  
 BRONSON  
 COUNTY  
 GAINESVILLE  
 HAWTHORNE  
 HIGH SPRINGS  
 LACROSSE  
 MICANOPY  
 NEWBERRY  
 UNIVERSITY OF FLORIDA  
 WALDO

<b>Within Bureau 22</b>	748 hrs, 3 min
14.00 hrs, 4.00 min	
4.00 hrs, 58.00 min	
570.00 hrs, 6.00 min	85.2%
20.00 hrs, 14.00 min	
12.00 hrs, 57.00 min	
51.00 hrs, 9.00 min	
3.00 hrs, 33.00 min	
2.00 hrs, 58.00 min	
55.00 hrs, 41.00 min	
6.00 hrs, 41.00 min	
5.00 hrs, 35.00 min	

**ACSO MSTU Analysis -- Total Time -- AK Units**

ALACHUA  
 ARCHER  
 BRADFORD  
 COUNTY  
 DIXIE  
 GAINESVILLE  
 GILCHRIST  
 HAWTHORNE  
 HIGH SPRINGS  
 LACROSSE  
 LAFAYETTE  
 MARION  
 MICANOPY  
 NEWBERRY  
 UNIVERSITY OF FLORIDA  
 VOLUSIA  
 WALDO

<b>Within Bureau 21</b>	4108 hrs, 13 min
67.00 hrs, 39.00 min	
33.00 hrs, 28.00 min	
5.00 hrs, 22.00 min	
2,661.00 hrs, 34.00 min	70.8%
16.00 hrs, 28.00 min	
579.00 hrs, 13.00 min	
8.00 hrs, 51.00 min	
53.00 hrs, 31.00 min	
34.00 hrs, 3.00 min	
15.00 hrs, 19.00 min	
4.00 hrs, 27.00 min	
13.00 hrs, 2.00 min	
15.00 hrs, 26.00 min	
163.00 hrs, 47.00 min	
394.00 hrs, 11.00 min	
11.00 hrs, 51.00 min	
29.00 hrs, 52.00 min	

**ACSO MSTU Analysis -- Total Time -- DTF**

ALACHUA  
 ARCHER  
 COUNTY  
 DIXIE  
 GAINESVILLE  
 HAWTHORNE  
 HIGH SPRINGS  
 MARION  
 MICANOPY  
 NEWBERRY  
 UNIVERSITY OF FLORIDA  
 WALDO

<b>Within Bureau 22</b>	1305 hrs, 26 min
14.00 hrs, 58.00 min	
3.00 hrs, 16.00 min	
877.00 hrs, 54.00 min	68.7%
5.00 hrs, 22.00 min	
106.00 hrs, 23.00 min	
6.00 hrs, 27.00 min	
0.00 hrs, 40.00 min	
45.00 hrs, 6.00 min	
7.00 hrs, 59.00 min	
15.00 hrs, 2.00 min	
216.00 hrs, 43.00 min	
5.00 hrs, 29.00 min	



**ACSO MSTU Analysis -- Total Time -- AIR1**

ALACHUA  
 ARCHER  
 BAKER  
 COUNTY  
 GAINESVILLE  
 HAWTHORNE  
 HIGH SPRINGS  
 LACROSSE  
 Newberry  
 PUTNAM  
 UNION  
 UNIVERSITY OF FLORIDA  
 WALDO

<b>Within Bureau 21</b>	150 hrs, 37 min	
5.00 hrs, 51.00 min		
0.00 hrs, 53.00 min		
0.00 hrs, 9.00 min		
53.00 hrs, 34.00 min	44.0%	
66.00 hrs, 23.00 min		
3.00 hrs, 43.00 min		
3.00 hrs, 4.00 min		
0.00 hrs, 29.00 min		
9.00 hrs, 25.00 min		
1.00 hrs, 36.00 min		
4.00 hrs, 22.00 min		
1.00 hrs, 0.00 min		
0.00 hrs, 3.00 min		

**ACSO MSTU Analysis -- Total Time -- JRB**

ALACHUA  
 ARCHER  
 COUNTY  
 DIXIE  
 GAINESVILLE  
 GILCHRIST  
 HAWTHORNE  
 HIGH SPRINGS  
 LACROSSE  
 MARION  
 MICANOPY  
 NEWBERRY  
 UNIVERSITY OF FLORIDA

<b>Within Bureau 21</b>	2430 hrs, 15 min	
17.00 hrs, 18.00 min		
14.00 hrs, 10.00 min		
1,513.00 hrs, 59.00 min	77.8%	
10.00 hrs, 7.00 min		
216.00 hrs, 23.00 min		
1.00 hrs, 56.00 min		
146.00 hrs, 21.00 min		
2.00 hrs, 30.00 min		
0.00 hrs, 2.00 min		
0.00 hrs, 7.00 min		
0.00 hrs, 0.00 min		
217.00 hrs, 17.00 min		
289.00 hrs, 59.00 min		

**ACSO MSTU Analysis -- Total Time -- Civil**

ALACHUA  
 ARCHER  
 COUNTY  
 DIXIE  
 GAINESVILLE  
 HAWTHORNE  
 HIGH SPRINGS  
 LACROSSE  
 MICANOPY  
 NEWBERRY  
 UNIVERSITY OF FLORIDA  
 WALDO

<b>Within Bureau 34</b>	1491 hrs, 17 min	
24.00 hrs, 1.00 min		
21.00 hrs, 19.00 min		
770.00 hrs, 13.00 min	58.2%	
15.00 hrs, 38.00 min		
190.00 hrs, 1.00 min		
20.00 hrs, 41.00 min		
8.00 hrs, 33.00 min		
1.00 hrs, 54.00 min		
6.00 hrs, 28.00 min		
57.00 hrs, 9.00 min		
369.00 hrs, 49.00 min		
5.00 hrs, 27.00 min		

**ACSO MSTU Analysis -- Total Time -- Warrants**

ALACHUA  
 ARCHER  
 COUNTY  
 DIXIE  
 GAINESVILLE  
 GILCHRIST  
 HAWTHORNE  
 HIGH SPRINGS  
 LACROSSE  
 MARION  
 MICANOPY  
 NEWBERRY  
 UNIVERSITY OF FLORIDA  
 WALDO

<b>Within Bureau 34</b>	2307 hrs, 55 min	
62.00 hrs, 12.00 min		
16.00 hrs, 49.00 min		
1,027.00 hrs, 43.00 min	46.9%	
4.00 hrs, 23.00 min		
811.00 hrs, 39.00 min		
2.00 hrs, 27.00 min		
18.00 hrs, 0.00 min		
30.00 hrs, 10.00 min		
4.00 hrs, 58.00 min		
0.00 hrs, 15.00 min		
1.00 hrs, 49.00 min		
45.00 hrs, 18.00 min		
260.00 hrs, 19.00 min		
21.00 hrs, 45.00 min		

## School Resource Officer Allocation Split

School Type	Enrollment	ASO Patrols	City Patrols
Elementary Schools	13,375	5,889	7,486
High Schools	7,161	4,181	2,980
Middle Schools	5,949	2,735	3,214
<b>Totals</b>	<b>26,485</b>	<b>12,805</b>	<b>13,680</b>

<b>School Enrollment Splits (1)</b>		
ASO Patrol	12,805	48.35%
Municipality Patrol	13,680	51.65%
<b>Total Public School Enrollment</b>	<b>26,485</b>	

<b>Population Split (2)</b>		
City (non MSTU LE participants)	146,235	56.89%
Unincorporated + Participating Cities	110,827	43.11%
<b>Total Alachua County Population</b>	<b>257,062</b>	

<b>Taxable Value (3)</b>		
Municipalities	7,402,975,596	58.71%
Unincorporated + Participating Cities + Contract Newberry	5,206,341,927	41.29%
<b>Total General Fund Taxable Value</b>	<b>12,609,317,523</b>	

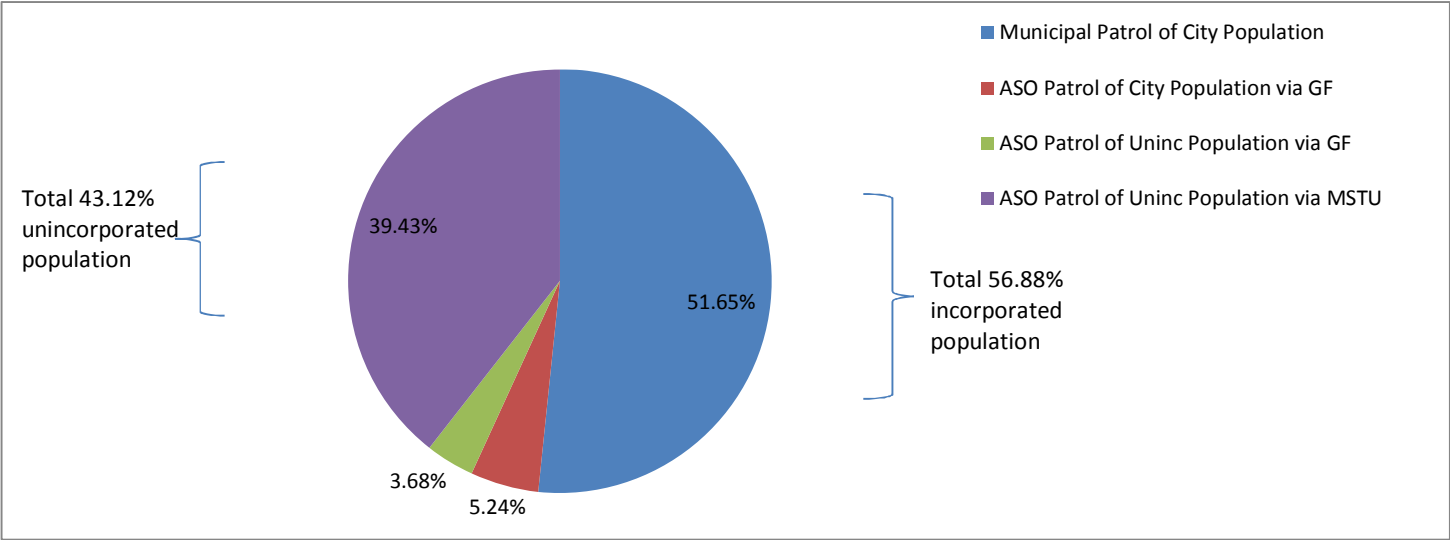
(1) Alachua County School Board as of 1/24/17

(2) <http://edr.state.fl.us/Content/population-demographics/data/index.ctm> (BEER April 1, 2016 estimates)

(3) 2016 Certified Tax Roll

Countywide Patrol Splits

Municipal Patrol of City Population	51.65%	See School Enrollment Splits
ASO Patrol of City Population via GF	5.24%	City Population portion (56.89%) less Municipality Patrol portion (51.65%)
ASO Patrol of Uninc Population via GF	3.68%	Divide ASO Patrol of City Population (5.24%) by Municipalities taxable value portion of GF (58.71%) times Uninc and Participating Cities taxable value portion of GF (41.29%).
ASO Patrol of Uninc Population via MSTU	39.43%	Uninc and Participating Cities population less GF-ASO Patrol of Uninc Pop



School Resource Officer Example Funding Split

Funding Split - Hypothetical \$1 Million Countywide Budget

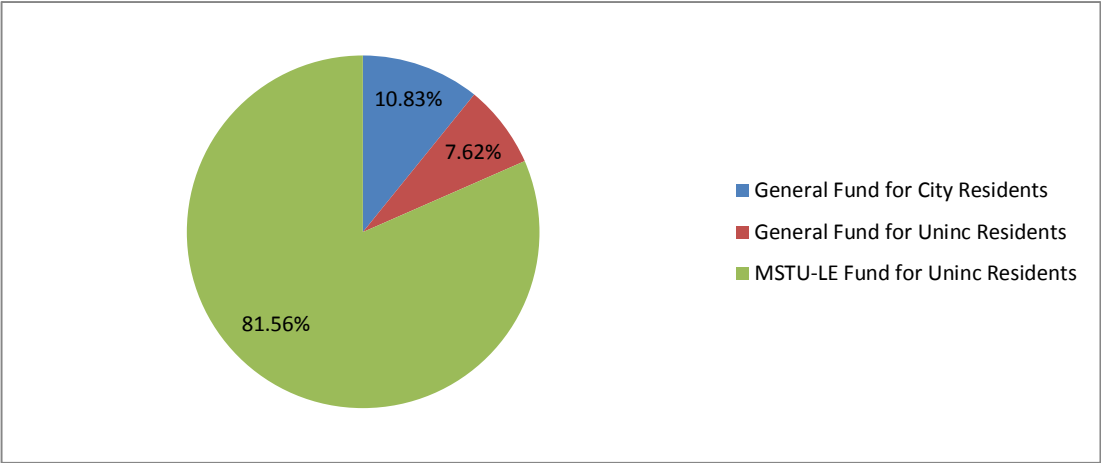
City Resident Portion (based on Pop)	\$	568,871	56.89%
Unincorporated Resident (based on Pop)	\$	431,129	43.11%
Total SRO Countywide Budget	\$	1,000,000	

Countywide Funding Split

City Resident pay for City Patrol via City GF	\$	516,519		
City Resident pay for ASO Patrol via GF	\$	52,352	\$	568,871 City Resident Portion
Uninc Resident pay for ASO Patrol via GF	\$	36,818		
Uninc Resident pay for ASO Patrol via MSTU	\$	394,312	\$	431,129 Uninc Resident Portion
	\$	1,000,000		

Just BoCC Funding Split

General Fund for City Residents	\$	52,352	10.83%	
General Fund for Uninc Residents	\$	36,818	7.62%	18.44% Total General Fund
MSTU-LE Fund for Uninc Residents	\$	394,312	81.56%	81.56% Total MSTU-LE
Total BoCC Funding	\$	483,481	100%	100%



# ALACHUA



# COUNTY SHERIFF'S OFFICE

Sheriff Sadie Darnell

Post Office Box 5489 • Gainesville, FL 32627

November 1, 2019

Assistant Chief Pierce  
Gainesville Police Department  
545 NW 8<sup>th</sup> Ave  
Gainesville, FL 32627

Dear Assistant Chief Pierce:

The following itemized list represents the anticipated expenses of the Joint Aviation Unit (JAU) for the fiscal year 2019 - 2020:

6.2%	Salary of Aviation Mechanic	\$58,152	001-2120-521-1200
001-2120-521-2101 ←	Tool Allowance	650	001-2120-521-1503
1.45%	FICA (7.65%)	4,499	
001-2120-521-2102	Florida Retirement System (8.47%)	4,981	001-2120-521-2200
	Workers Compensation Insurance (7.62%)	4,481	001-1001-521-2400
	Life Insurance	70	001-2120-521-2302
	Dental Insurance	217	001-2120-521-2304
	Bulk Hanger Rental (\$1,866.75/month)	22,401	001-2198-521-4445
	Gainesville Regional Utilities	6,000	001-2198-521-4341
	WCA Waste (\$70.55/month)	847	001-2198-521-3443
	Spence Chemical	400	001-2198-521-5246
	Safety Kleen 10 Gallon Parts Washer Service	1,200	001-2198-521-3443
<b>Total</b>		<b>\$103,898.00</b>	<b>1/2 = 51,949.00</b>

Sincerely,

SADIE DARNELL, SHERIFF

By: Capt B. B. Blizard  
Captain Bella Blizard  
Patrol Support Division

BB/tyc

1/12 = 4,329.08  
x 11  
4,329.12  
x 1

The Joint Aviation Unit (JAU) is a cooperative effort between the Gainesville Police Department and the Alachua County Sheriff's Office. The mission of the JAU is to provide aerial support to all law enforcement and public safety agencies within the City of Gainesville and Alachua County.

The idea for the Joint Aviation Unit sprang from the student murders of 1990, five students from the University of Florida and Santa Fe Community College were murdered. A drifter was eventually apprehended and convicted of these crimes. (Danny Rollins).

During the search for the murderer, local agencies called in neighboring helicopters. Some GPD personnel flew as observers. During this exhaustive search, our staff realized the importance of searching from the air could cover much ground in less time. That is critical when searching for a suspect or a lost person and also police officer safety.

The Gainesville Police Department bought two helicopters in 1994, each for \$100. They began flying them in 1995 and eventually gave one to another county. The combined unit started in 1996. "

The Aviation Unit has flight crews from the Gainesville Police Department and the Alachua County Sheriff's Office that fly three military surplus OH-58 helicopters. The helicopters are all equipped with searchlights and Forward-Looking Infrared (FLIR) Thermal Imaging Cameras.

The Gainesville Police Department currently has one helicopter that was damaged in 2019, causing the aircraft not worthy of flight. Staff was searching for a replacement unit while operating an aircraft from the Alachua County Sheriff's office.

It is estimated that the annual cost of the existing unit to the City is \$300,000. Assuming there is an even sharing of cost off the unit with the Alachua County Sheriff Office, City neighbors and other property owners generate \$140,000 of the revenue that supports the unit; thus, bringing the City share to 73%.

In 2016, the Bureau of Justice Statistics reported only about 350 law enforcement agencies in the U.S. had Aviation Programs in active use. This number has remained small due to the substantial cost of operating fixed and rotary-wing aircraft.

The Gainesville Police Department is exploring the usage of "small unmanned aerial systems," also known as drones. These aircrafts can be used in criminal investigations, search and rescue operations. While they are, in many ways, similar to the manned aircraft that have been in use for many years. They have the potential to provide law enforcement with additional flexibility and yield life-saving benefits. The aircraft is a "benefit" to law enforcement; however, they should be used in conjunction with existing forms of air support. Florida Law prohibits the use of a drone to capture an image of privately owned property or the owner, tenant, or occupant of such property without consent if a reasonable expectation of privacy exists. There is pending legislation in this session to expand the authorized use of drones by law enforcement, for event crowds of 50 people or more, in traffic management and in the collection of evidence at crime and traffic crash scenes.

**INTER-AGENCY AGREEMENT FOR JOINT AVIATION UNIT  
BETWEEN  
THE ALACHUA COUNTY SHERIFF'S OFFICE  
AND  
THE GAINESVILLE POLICE DEPARTMENT**

WITNESSETH:

**WHEREAS**, the Alachua County Sheriff's Office and the City of Gainesville through its Police Department have authority under Section 23.12, F.S., et. seq., The Florida Mutual Aid Act, to enter into a requested operational assistance agreement for rendering of assistance in a law enforcement emergency that crosses jurisdictional lines or requires specialized units or equipment; and,

**WHEREAS**, the Alachua County Sheriff's Office and the Gainesville Police Department are committed to the formation and operation of a joint Aviation Unit to deter criminal activity, apprehend violators, and provide airborne support for other law enforcement, fire/rescue, and public safety operations; and

**WHEREAS**, the Gainesville Police Department and the Alachua County Sheriff's Office have acquired certain surplus aviation equipment from the federal government; and

**WHEREAS**, the Alachua County Sheriff's Office and the Gainesville Police Department each employ qualified pilots; and

**WHEREAS**, the formation of a Joint Aviation Unit would maximize resources and avoid duplications of efforts which would be detrimental to public finances;

**NOW, THEREFORE**, in consideration of the mutual promises and covenants contained herein, the parties hereto agree as follows:

**I. Organization**

There shall be an inter-agency helicopter operations unit known as the Joint Aviation Unit (JAU), made up of personnel from the Alachua County Sheriff's Office (ACSO) and the Gainesville Police Department (GPD). The JAU shall have county-wide jurisdiction. Each agency shall cooperate in the drafting, and maintenance of a JAU policies and procedures manual.

**II. Equipment, Fuel, and Maintenance**

GPD shall retain ownership and dedicate its OH-58 C helicopter N911GV, serial number 70-15212. ACSO shall retain ownership and dedicate its two OH-58 A+ helicopters: N167AC, serial number 70-15620; and N168AC, serial number 72-21266. Any and all helicopters and parts hereinafter obtained by GPD and the ACSO shall be dedicated to the JAU. Each agency shall maintain an inventory of parts it has supplied. GPD and ACSO shall share equally in costs of fuel and hangar lease agreements.



### **III. Personnel**

GPD and ACSO shall each assign a full-time pilot and a full-time tactical flight officer (TFO) to the JAU. Each agency shall pay all respective personnel costs for the pilots and TFO's, including all pilot/TFO certification requirements. ACSO will assign a full-time maintenance technician to the JAU. ACSO shall pay all respective personnel costs associated with this position. GPD will reimburse ACSO for one half of these expenses. Other personnel shall be assigned by the agencies as contemplated by the JAU policy and procedures manual.

### **VI. Command and Supervisory Responsibility**

The JAU shall fall under the command and control of the Sheriff of Alachua County. Each agency shall designate one supervisor to serve as the aviation commander for that respective agency, and who shall be responsible for directing, supervising, providing for training and evaluating activities of the agency's personnel assigned to the JAU. These supervisors shall prepare reports and/or correspondence regarding the JAU. Other duties shall be as designated in the JAU's policy and procedures manual.

One Chief Pilot shall be designated and who shall be responsible for ensuring that the pilots of the JAU meet the criteria which allows the pilots to carry out the duties of Pilot in Command in a safe and proficient manner. The criteria for selection shall be as stated in the JAU policies and procedures manual.

### **V. Operations**

Use of the JAU helicopters will be divided into two (2) basic types of air operations: Air Support to Patrol Operations (ASPO) and Special Request Flights. Special Request Flights shall be as provided in the JAU policies and procedures manual.

### **VI. Insurance and Liability**

Each party agrees, with respect to any suit or claim for damages resulting from any and all acts, omissions, or conduct of such party's own employees while engaged in JAU activities, to assume full responsibility for same, subject to the provisions of section 768.28, F.S., where applicable.

Each party shall provide satisfactory proof of liability insurance by one or more of the means specified in section 768.28(14), F.S., in an amount which is, in the judgment of the governing body of that party, at least adequate to cover the risk to which that party may be exposed. Should the insurance coverage, however provided, of any party be cancelled or undergo material change, that party shall notify the other party to this Agreement of such change within ten (10) days of receipt of notice or actual knowledge of such change. It is acknowledged by each party that the initial above-mentioned liability insurance has been provided by GPD and both GPD and ACSO pilots assigned to the JAU are listed in said policy.



## VII. Effective Date

This Agreement shall take effect upon execution and approval by the hereinafter named officials and shall continue in full force and effect until terminated by one or both parties.

## VIII. Termination

This Agreement may be terminated by either party upon thirty (30) days written notice to the other party.

IN WITNESS WHEREOF, the parties hereto cause these presents to be signed on the date specified.

### **ALACHUA COUNTY SHERIFF'S OFFICE**

Sadie Darnell 8/15/09  
Sadie Darnell, Sheriff Date

Approved as to Form and Legality:

Cynthia M. Weygant 8/24/09  
Cynthia M. Weygant, Staff Attorney Date

### **CITY OF GAINESVILLE**

Russ Blackburn 8-17-09  
Russ Blackburn, City Manager Date

Recommended:

Tony R. Jones 8-13-09  
Tony R. Jones, Interim Police Chief Date

Approved as to Form and Legality

BY: Ronald D. Combs  
Ronald D. Combs, Sr. Asst. City Attorney



## Agenda Item Summary

---

Agenda Date: 5/29/2020

Agenda Item No.: 2.

---

**Agenda Item Name:**

Radio System

**Presenter:**

Click or tap here to enter text.

**Description:**

Click or tap here to enter text.

**Recommended Action:**

Have a discussion on the radio system.

**Prior Board Motions:**

Click or tap here to enter text.

**Fiscal Consideration:**

N/A

**Background:**

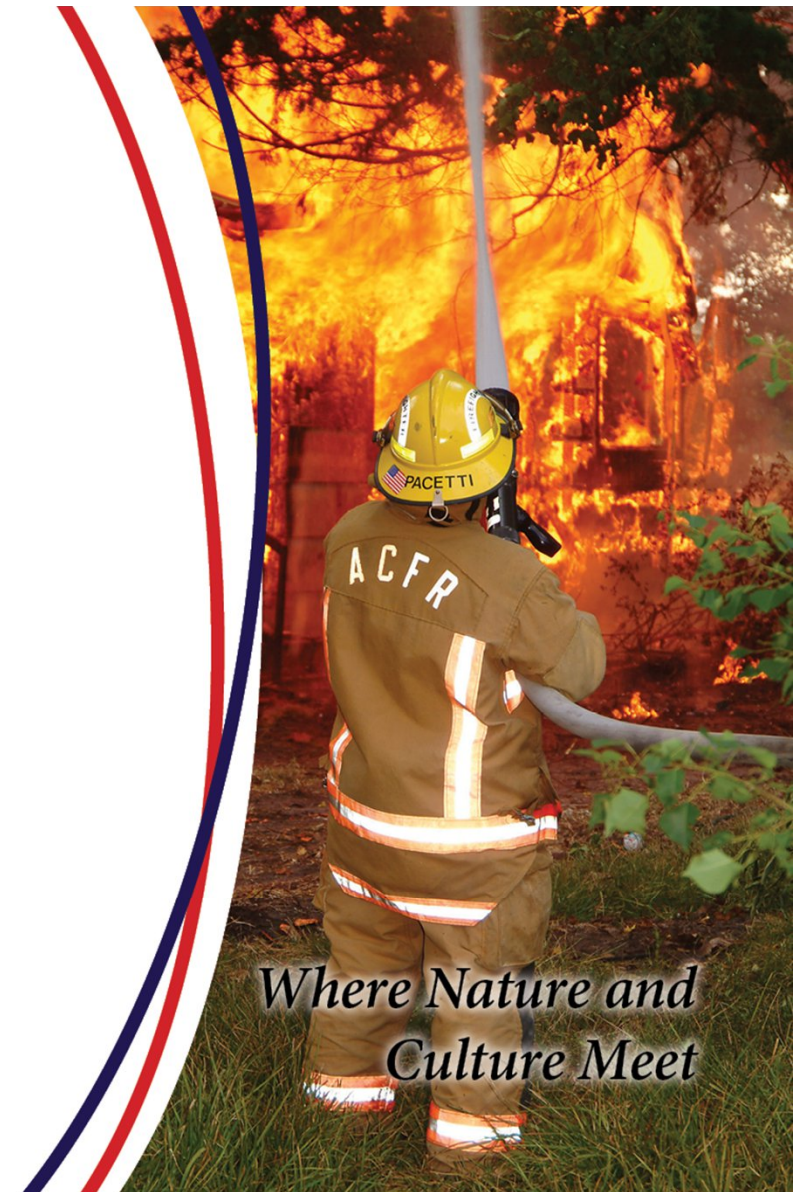
The Chair and Mayor asked for the Radio System Update to be presented at this joint meeting. Staff has been reviewing funding and governance options and will be seeking direction on moving forward.



# TRS (Trunked Radio System)

Harold Theus, Chief

Tommy Crosby, Asst. County  
Manager



*Where Nature and  
Culture Meet*

## Objectives



- A reliable radio system for all public safety entities
- Resilient radio system that can withstand natural disasters
- A shared radio system that provide seamless, communication regardless of jurisdictional boundaries

## Primary Discussion Points



### Brief history of system

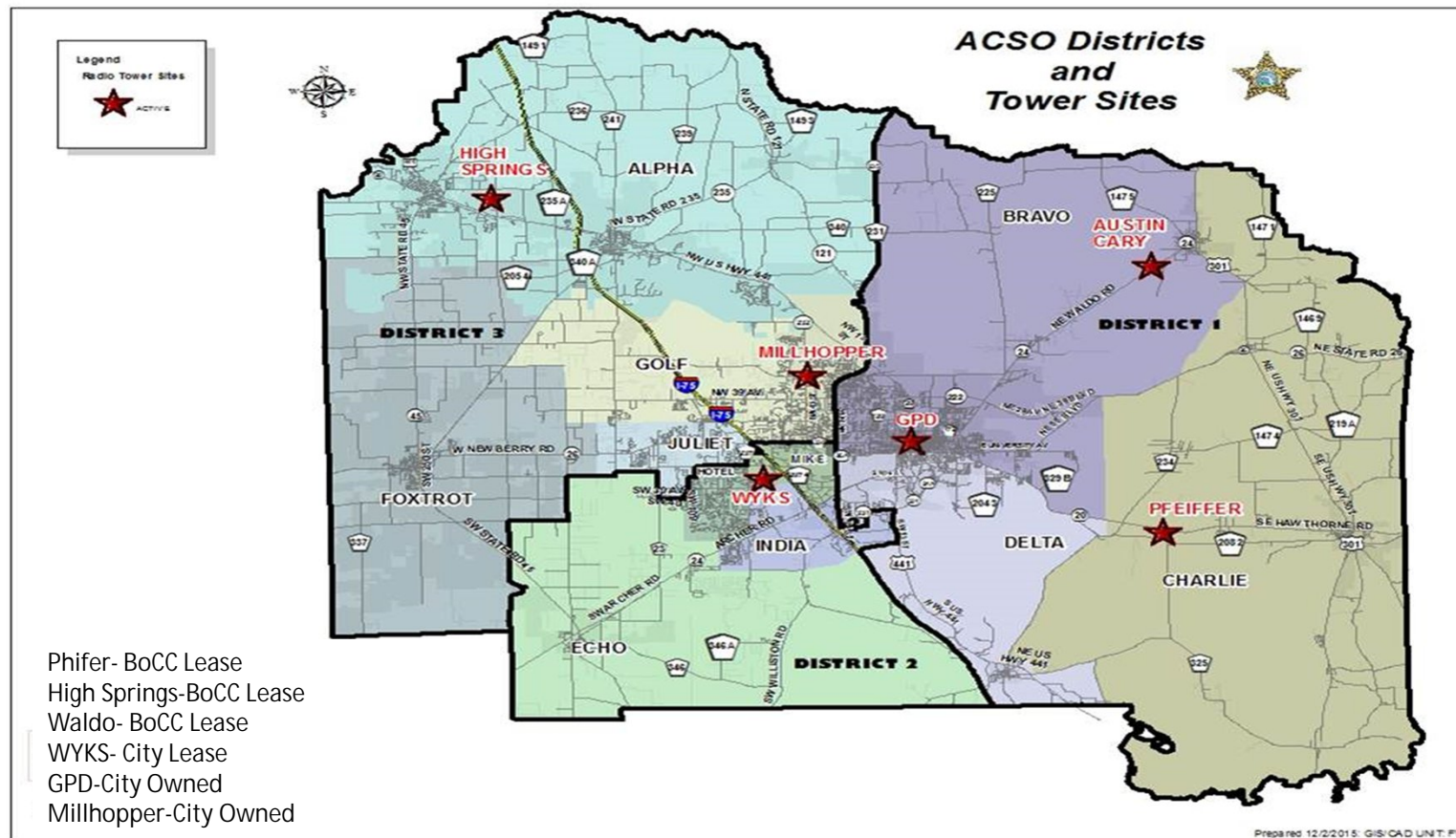
- Creation of Trunked Radio System (TRS) and Interlocal Agreement

### Key Points

- TRS needs to expand radio coverage to meet evolving growth in suburban and rural areas of the City/County
- Governance planning considerations
  - Interlocal is due to expire October 1, 2020
- Funding; scope of recent and future project costs



# TRS Creation



# TRS Interlocal/RMB



1999 TRS Interlocal established Radio Management Board (RMB)

- “A management board comprised of the principal participating agencies for the GRUCom Trunked Radio System” (RMB Bylaws)
- RMB has no funding authority

The current system is funded by monthly TRS subscriber fees per radio on the system (\$54.11 per mobile/portable) for system operations/maintenance and operational overhead

Current TRS fees do not support infrastructure upgrade or contingency funding

# TRS Users



## City of Gainesville

- Fire Rescue\*
- Police Department\*
- Code Enforcement
- Public Works
- Parks and Recreation
- Regional Transit System (RTS)
- GRU\*

Santa Fe Police Department

High Springs Police Department

Alachua Police Department

University of Florida Police Department\*

CSX (Railroad) Police

Gainesville Airport

US Marshall Service

State Attorney

## Alachua County

- Fire Rescue\*
- Sheriff's Office\*
  - Department of the Jail
  - Civil/Courts
  - Patrol
  - CCC
- Animal Services
- Public Works
- Court Services
- Waste Management
- Facilities

Melrose Fire Department

High Springs Fire Department

Windsor Fire Department

Cross Creek Fire Department

Newberry Fire Department

Lacrosse Fire Department

Micanopy Fire Department

VA Hospital

UF Health/ShandsCair

North Florida Regional Medical Center

\* =RMB Voting Member



# Present Situation



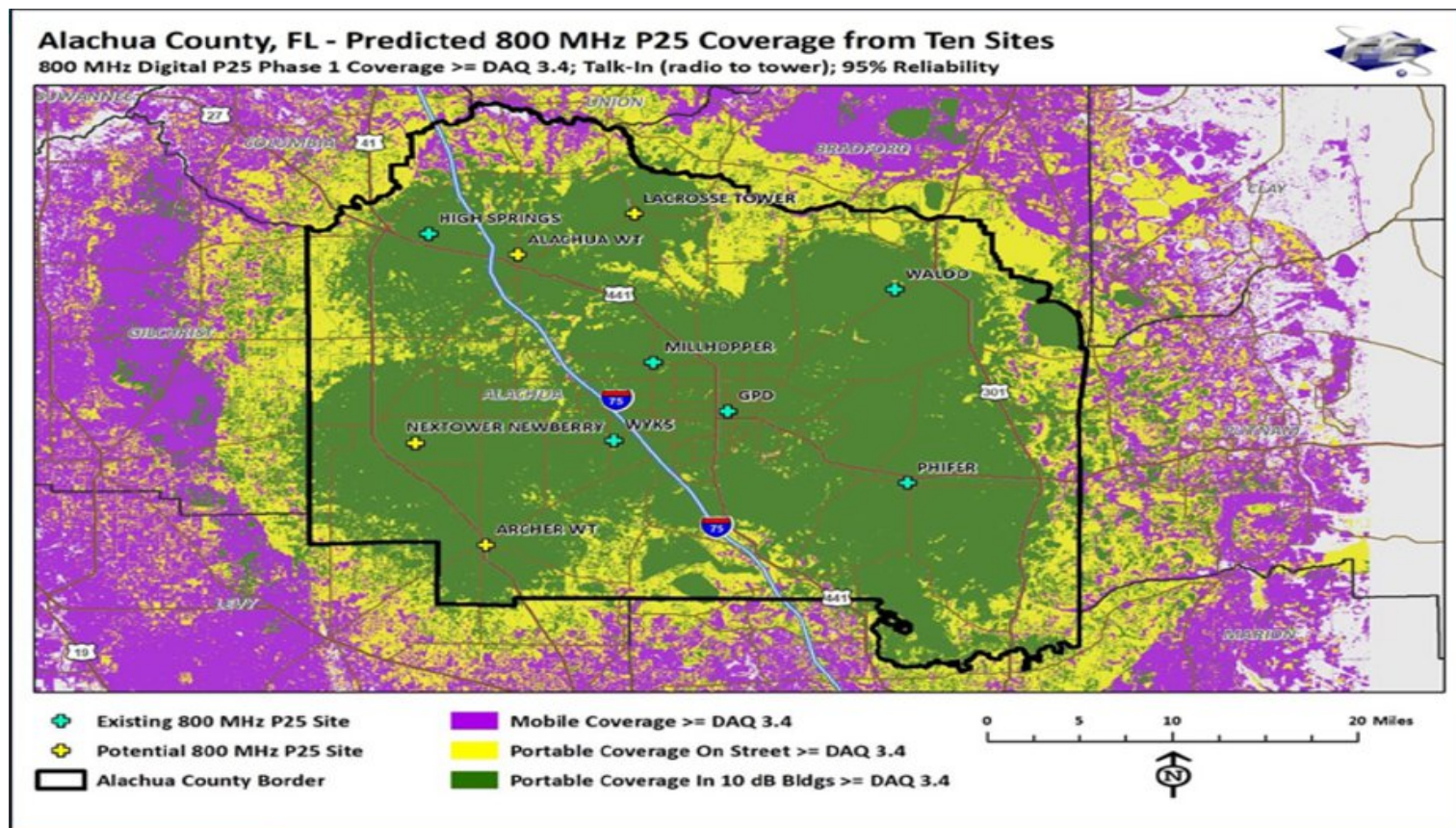
- GruCom recently invested approximately \$5 million to upgrade the 6-site system infrastructure to the latest communications standard (P25)
  - This investment was not funded by revenues generated by TRS User's Fees
- The upgrade brought some elements of the systems core up to date but significant needs remain.

# Present Situation Continued



- Upgrades (approx. \$8 million) currently under consideration
- The County BoCC has secured Federal Engineering for consultant services and project coordination
  - RMB reached consensus with Federal Engineering as to which available components and features were appropriate for the upgrade to the TRS

# Predicted 10-Site Coverage



# Estimated Costs-Infrastructure



Component	Estimated Cost
Geo-Diverse Prime Site	\$674,000
Four New RF Sites	\$2,619,000
Site Improvements	\$1,196,000
Backhaul Network	\$1,214,000
Over the Air Programming	\$56,000
ISSI	\$450,000
DSR Master	\$748,000
Over the Air Rekey	\$299,000
Smartphone Integration	\$375,000
GPS/AVL	\$244,500
Total	\$7,875,500

# Cooperation



- February 17<sup>th</sup>- invited all stakeholders to attend-discuss radio systems present situation and future needs
- February 27<sup>th</sup>- met with Alachua County School Superintendent and staff.
- Ongoing meetings with City of Gainesville and Alachua County Staff
- Have held individual meetings with all other municipalities

# Potential Cost



## Current Contract Status with GRU (~53%)

\$1.2M GRU Cost recovered

BoCC share = \$640K

## Estimated Future Program needs

\$1.5M GRU Operating

BoCC Share = \$795K

BoCC Share = \$795K

BoCC Share = \$310K

(Capital \$5 Million)

\$675K Expansion Operating

BoCC Share = \$360K

\$900K Expansion Capital

BoCC Share = \$475K

(Capital \$8 Million)

## Surtax Option



- ½ cent sales tax for 1 year--estimated revenue of \$22 million
- Create a new interlocal entity
- Pledge, give or direct the new surtax to the new interlocal entity
- Capital equipment purchases, software updates and future system investments would be governed by entity
- \$5 million investment and \$8 million needs would be paid for by surtax, leaving a balance for future needs and investment



# Recommendations



## Direct Staff:

- Pursue ½ cent sales tax referendum
- Engage Attorney Kenneth Artin to design entity
- Move forward with Phase 3 with the consultant



# Contact Information



[Alachua County Fire Rescue Web Site](#)

352-384-3101

Dial 911 in an emergency

[Alachua County Fire Rescue FaceBook Page](#)

Alachua County  
Board of County Commissioners

**ORDINANCE 20 - \_\_\_\_\_**

AN ORDINANCE OF THE BOARD OF COUNTY COMMISSIONERS OF ALACHUA COUNTY, FLORIDA, AMENDING ORDINANCE 16-06 OF THE BOARD OF COUNTY COMMISSIONER OF ALACHUA COUNTY, FLORIDA, TO TEMPORARILY INCREASE THE IMPOSITION OF THE EXISTING LOCAL GOVERNMENT INFRASTRUCTURE SURTAX FROM 0.5 PERCENT TO 1.0 PERCENT ON CERTAIN TRANSACTIONS OCCURRING WITHIN ALACHUA COUNTY FROM WHICH TAXES PAYABLE TO THE STATE OF FLORIDA UNDER THE PROVISIONS OF CHAPTER 212, FLORIDA STATUTES, FOR A ONE YEAR PERIOD BEGINNING JANUARY 1, 2021 AND ENDING DECEMBER 31, 2021; PROVIDING THAT 50.0 PERCENT OF THE PROCEEDS OF THE SURTAX LEVIED DURING THE PERIOD OF JANUARY 1, 2021 THROUGH DECEMBER 31, 2021 SHALL BE USED TO DESIGN, CONSTRUCT AND IMPROVE THE PUBLIC SAFETY TRUNKING RADIO SYSTEM AND TO ACQUIRE PROPERTY INTERESTS RELATED THERETO; PROVIDING THAT THE OTHER 50.0 PERCENT OF THE PROCEEDS OF THE SURTAX LEVIED DURING THE PERIOD OF JANUARY 1, 2021 THROUGH DECEMBER 31, 2021 SHALL BE USED TO ACQUIRE, IMPROVE AND MAINTAIN CONSERVATION LANDS AND TO ACQUIRE, CREATE, IMPROVE, MAINTAIN, AND OPERATE PARKS AND RECREATIONAL FACILITIES THROUGHOUT THE COUNTY; PROVIDING THAT THE IMPOSITION OF SURTAX SHALL DECREASE FROM 1.0 PERCENT TO 0.5 PERCENT ON JANUARY 1, 2022; PROVIDING THAT 100.0% OF THE PROCEEDS OF THE SURTAX LEVIED DURING THE PERIOD OF JANUARY 1, 2022 THROUGH DECEMBER 31, 2024 SHALL BE USED TO ACQUIRE, IMPROVE AND MAINTAIN CONSERVATION LANDS AND TO ACQUIRE, CREATE, IMPROVE, MAINTAIN, AND OPERATE PARKS AND RECREATIONAL FACILITIES THROUGHOUT THE COUNTY; PROVIDING THAT THIS AMENDMENT TO ORDINANCE 16-06, INCLUDING THE TEMPORARY INCREASE IN THE IMPOSITION OF THE SURTAX, SHALL NOT BE EFFECTIVE UNLESS APPROVED AT A REFERENDUM ELECTION; PROVIDING FOR DISTRIBUTION AMONG THE GOVERNMENTS OF ALACHUA COUNTY AND ELIGIBLE MUNICIPALITIES PURSUANT TO INTERLOCAL AGREEMENT; PROVIDING FOR A REFERENDUM ELECTION ON NOVEMBER 3, 2020, PROVIDING BALLOT LANGUAGE; PROVIDING FOR SEVERABILITY; PROVIDING AN EFFECTIVE DATE.

**WHEREAS**, Subsection 212.055(2), Florida Statutes, the Local Government Infrastructure Surtax Act, authorizes Alachua County to impose a local government infrastructure surtax of 0.5 percent or 1.0 percent upon most taxable transaction occurring within Alachua County that are taxable under Chapter 212, Florida Statutes; and

**WHEREAS**, the proceeds received from the local government infrastructure surtax authorized by Subsection 212.055(2), Florida Statutes, may be utilized by Alachua County and the municipalities within Alachua County to acquire any interest in land for public recreation, conservation, or protection of natural resources, to improve conservation lands, or to create, improve, maintain and operate the parks and recreational programs and facilities established with the proceeds of the surtax within Alachua County (hereinafter, “Wild Spaces Public Places Purposes” or “WSPP Purposes”); and

**WHEREAS**, the Board of County Commissioners of Alachua County, Florida, adopted Ordinance 16-06 on May 10, 2016, to impose a 0.5 percent surtax for WSPP Purposes (the “WSPP Surtax Ordinance”); and

**WHEREAS**, the WSPP Surtax Ordinance was approved by a majority of the electors voting in the referendum election held on November 8, 2016 and became effective on January 1, 2017; and

**WHEREAS**, pursuant to Section 212.005(2)(c)1., Florida Statutes, Alachua County and the City of Gainesville entered into that certain Interlocal Agreement dated April 20, 2017, to establish how the proceeds from the WSPP Surtax Ordinance would be distributed to Alachua County and all of the municipalities within Alachua County (the “WSPP Distribution Interlocal Agreement”); and

**WHEREAS**, Subsections 212.054(5) and 212.055(2)(a)1., Florida Statutes, authorize Alachua County to increase the surtax by an additional 0.5 percent; and

**WHEREAS**, the Board of County Commissioners of Alachua County has determined that it server a public purpose, and is in the public interest, to temporarily impose and use the

additional 0.5 percent surtax to fund improvements to the Public Safety Trunking Radio System (“TRS System”); and

**WHEREAS**, on November 9, 1999, Alachua County and the City of Gainesville, doing business as Gainesville Regional Utilities (“GRU”), entered into an Interlocal Agreement for Public Safety Trunking Radio Services (the “GRU Interlocal Agreement”); and

**WHEREAS**, pursuant to the GRU Interlocal Agreement, the parties and numerous other governmental entities use the Public TRS System for county-wide public safety communications; and

**WHEREAS**, the TRS System is used throughout the County by numerous governmental law enforcement agencies, fire departments, and other first responders, including but not limited to: City of Gainesville Fire Rescue, City of Gainesville Police Department, Santa Fe College Police Department, City of High Springs Police Department, City of High Springs Fire Department, City of Alachua Police Department, University of Florida Police Department, Gainesville Airport, US Marshall Service, State Attorney, Alachua County Fire Rescue, Alachua County Sheriff’s Office, City of Newberry Fire Department, and others (Collectively, the “TRS System Users”); and

**WHEREAS**, TRS System Users rely on the TRS System as their primary means of communicating both internally and with each other during both normal operations and during public emergencies; and

**WHEREAS**, GRU recently spent approximately \$5,000,000 to upgrade the TRS System within the geographic boundary of the City of Gainesville, but there are still significant geographic areas of Alachua County that lack TRS System coverage due to an insufficient

number of radio communication towers and deficiencies with the existing radio communication system infrastructure; and

**WHEREAS**, the Board of County Commissioners of Alachua County commissioned an engineering study to evaluate the TRS System for the purpose of, among other things, identify needed improvements to the TRS System; and

**WHEREAS**, the engineering study recommended constructing or otherwise adding new radio communication towers as well as capital improvements to existing towers located outside of the geographic boundary of the City of Gainesville; and

**WHEREAS**, the Board of County Commissioners of Alachua County has determined that many elements of the TRS System are at or near the end of their design life, and that implementation of the recommendations set forth in the engineering study would resolve the deficiencies in the current TRS System, would serve a public purpose and are in the public interest; and

**WHEREAS**, Subsection 212.055(2), Florida Statutes, authorizes Alachua County to impose and use the local government infrastructure surtax to finance, plan and construct “infrastructure,” as that term is defined in Section 212.005(2)(d)1., Florida Statutes, for purposes such as the improvement of the TRS System; and

**WHEREAS**, Subsection 212.054(5), Florida Statutes, requires that any increase or decrease in the rate of any discretionary sales surtax must take effect on January 1; and

**WHEREAS**, the Board of County Commissioners of Alachua County has determined that the additional proceeds created by temporarily increasing the surtax for a period of one year will be sufficient to fund the needed TRS System improvements; and

**WHEREAS**, a brief description of the projects to be funded by the temporary increase of the surtax is set forth in the ballot language contained in this ordinance; and

**WHEREAS**, Subsection 212.055(2), Florida Statutes, requires voter approval in a referendum election prior to imposition of the temporary increase of the surtax; and

**WHEREAS**, the Board of County Commissioners of Alachua County has determined it appropriate to place this temporary increase of the surtax on the ballot at the November 3, 2020, election; and

**WHEREAS**, the advertising required by Section 100.342, Florida Statutes, must be met, which require a period of approximately thirty (30) days advertisement prior to the election.

**BE IT ORDAINED BY THE BOARD OF COUNTY COMMISSIONERS OF ALACHUA COUNTY, FLORIDA:**

**SECTION 1. Authorization and Legislative Findings.** This ordinance is authorized by Subsection 212.055(2), Florida Statutes, and other applicable laws. The Board of County Commissioners of Alachua County finds and declares that all statements set forth in the preamble of this ordinance are true and correct.

**SECTION 2. Amendment of Ordinance 16-06.** Ordinance 16-06 shall be amended as follows:

**A.** Section 2 of Ordinance 16-06 shall be amended and replaced with the following provision:

**SECTION 2. Sales Surtax Levy.** Commencing January 1, 2021 and continuing through December 31, 2021, there shall be levied and imposed throughout the incorporated and unincorporated areas of

the County an additional sales tax on all transaction occurring in the County which are subject to the state tax imposed on transactions by Part I of Chapter 212, Florida Statutes (the “Temporary Combined WSPP/TRS System Surtax”). The Temporary Combined WSPP/TRS System Surtax shall be at the rate of 1.0 percent for each \$1.00 of the sale price or actual value received and for each fractional part of \$1.00 of the sale price or actual value received. This Temporary Combined WSPP/TRS System Surtax shall be levied and imposed in accordance with Section 212.054 and Subsection 212.055(2), Florida Statutes, and the rules promulgated by the Florida Department of Revenue. Commencing January 1, 2022, the levy shall decrease to 0.5 percent for each \$1.00 of the sale price or actual value received and for each fractional part of \$1.00 of the sale price or actual value received (the “WSPP Surtax”). The WSPP Surtax shall be levied and imposed in accordance with Section 212.054 and Subsection 212.055(2), Florida Statutes, and the rules promulgated by the Florida Department of Revenue.

**B.** Section 3 of Ordinance 16-06 shall be amended and replaced with the following provision:

**SECTION 3. Distribution of Surtax Proceeds.** Fifty percent (50%) of the proceeds of the Temporary Combined WSPP/TRS System Surtax levied pursuant to this ordinance (the “TRS System

Improvement Surtax”) shall be distributed in accordance with Subsection 212.055(2)(c), Florida Statutes. The other fifty percent (50%) of the proceeds of the Temporary Combined WSPP/TRS System Surtax, and One Hundred percent (100%) of the WSPP Surtax, levied pursuant to this ordinance (collectively, the “WSPP Purpose Surtax”) shall be distributed in accordance with the WSPP Distribution Interlocal Agreement.

C. Section 5 of Ordinance 16-06 shall be amended and replaced with the following provision:

**SECTION 5. Use of Surtax Proceeds.**

- a. The proceeds of the TRS System Improvement Surtax shall be used only for:
  - i. Acquisition of any interests in land or property needed to place, construct, reconstruct or improve radio communication towers or other radio communication infrastructure that is or will become part of the TRS System;
  - ii. Design costs, engineering costs and all other professional services and related costs required to bring into service new radio communication infrastructure that is or will become part of the TRS System;



- iii. Design costs, engineering costs and all other professional services and related costs required to reconstruct or improve existing radio communication infrastructure that is or will become part of the TRS System; and
  - iv. Construction, reconstruction or improvement of radio communication infrastructure that is or will become part of the TRS System.
- b.** The proceeds of the WSPP Purpose Surtax shall be used only to:
- i. Acquire and improve environmentally sensitive lands to protect drinking water sources, water quality, and wildlife habitat, and
  - ii. To create, improve and maintain parks and recreational facilities as permitted by Florida Statutes, the November 8, 2016 referendum ballot language, and ordinances.
  - iii. Notwithstanding the above, Alachua County may utilize a portion of its proceeds to establish a fund for the purposes of providing matching grants to municipalities within the County for projects that meet the requirements of subsections (i) or (ii), and

which, in the sole discretion of Alachua County, have  
countywide significance.

**SECTION 3. Referendum.**

- A. This ordinance amending Ordinance 16-06, which includes a temporary increase in the levy of the surtax from 0.5 percent to 1.0 percent for a one year period commencing January 1, 2021 as set forth in Section 2 of this ordinance, shall be presented to the County electorate by placing the question of approval of the temporary increase of levy of the surtax on the ballot at a referendum election to be held on November 3, 2020.
- B. The Supervisor of Elections of Alachua County shall cause the following question to be placed on the ballot on November 3, 2020:

ONE YEAR PUBLIC SAFETY RADIO INFRASTRUCTURE IMPROVEMENT  
ONE-HALF PERCENT SALE TAX

SHALL ALACHUA COUNTY BE AUTHORIZED TO IMPROVE THE PUBLIC SAFETY RADIO TRUNKING SYSTEM, WHICH IS THE PRIMARY MEANS BY WHICH FIRST RESPONDERS COMMUNICATE THOUGHTOUT ALACHUA COUNTY, BY ACQUIRING INTERESTS IN LAND, CONSTRUCTING NEW RADIO COMMUNICATION TOWERS AND MAKING CAPITAL IMPROVEMENTS TO EXISTING RADIO COMMUNICATIONS TOWERS, BY AMENDING ITS CURRENT ONE-HALF PERCENT (1/2%) SALES TAX TO TEMPORARILY INCREASE THE LEVY TO ONE PERCENT (1%) FOR A ONE YEAR PERIOD STARTING JANUARY 1, 2021?

[    ] FOR the one-year one-half percent sales tax.

[    ] AGAINST the one-year one-half percent sales tax.

**SECTION 4. Effective Date and Duration of Surtax.** The temporarily increase  
of the surtax from 0.5 percent (1/2%) to 1.0 percent (1%) for a one year period,

shall take effect as of January 1, 2021 only if approved by a majority of the electors voting for the temporary surtax increase in the referendum election to be held on November 3, 2020; in which case it shall continue for a period of one (1) year commencing on January 1, 2021 and ending on January 1, 2022; on January 1, 2022 the surtax shall decrease to 0.5 percent (1/2%); and the 0.5 percent (1/2%) surtax shall terminate on December 31, 2024. In the event that this temporary increase of the surtax is not approved by a majority of the electors voting for the temporary surtax increase in the referendum election to be held on November 3, 2020, then the surtax rate set forth in Ordinance 16-06 shall remain unchanged at 0.5 percent (1/2%), Ordinance 16-06 shall remain in full force and effect, and shall not be deemed amended by this ordinance.

**SECTION 5. Effective Date of Ordinance.** A certified copy of this ordinance shall be filed with the Department of State by the Clerk of the Board of County Commissioners within ten (10) days after enactment by the Board of County Commissioners. This ordinance shall take effect as of January 1, 2021 only if approved by a majority of the electors voting for the temporary surtax increase in the referendum election to be held on November 3, 2020. In the event that this ordinance amending Ordinance 16-06 is not approved by a majority of the electors voting for the temporary surtax increase in the referendum election to be held on November 3, 2020, then this ordinance shall not take effect, and Ordinance 16-06 shall remain in full force and effect, unchanged, and shall not be deemed amended by this ordinance.

**SECTION 6. Severability.** It is the declared intent of the Board of County Commissioners of Alachua County that if any section, subsection, sentence, clause, phrase, or provision of this ordinance is held invalid or unconstitutional by a court of competent jurisdiction, such invalidity or unconstitutionality shall not be so constructed as to render invalid or unconstitutional the remaining provisions of this ordinance.

**DULY ADOPTED** in regular session this \_\_\_\_ day of \_\_\_\_\_, 2020.

**ATTEST:**

**BOARD OF COUNTY COMMISSIONERS  
OF ALACHUA COUNTY, FLORIDA**

\_\_\_\_\_  
J.K. "Jess" Irby, Esq.  
Clerk

By: \_\_\_\_\_  
Robert Hutchinson, Chair

**APPROVED AS TO FORM**

\_\_\_\_\_  
County Attorney's Office



## Agenda Item Summary

---

Agenda Date: 5/29/2020

Agenda Item No.: 3.

---

**Agenda Item Name:**

Enforcement of State and County Emergency Orders

**Presenter:**

Click or tap here to enter text.

**Description:**

Click or tap here to enter text.

**Recommended Action:**

Discuss enforcement of state and county emergency orders.

**Prior Board Motions:**

Click or tap here to enter text.

**Fiscal Consideration:**

N/A

**Background:**

Click or tap here to enter text.

# City of Gainesville Racial Equity Toolkit

## Assessment Worksheet



The Racial Equity Toolkit lays out a process and a set of eight questions to guide the development, implementation and evaluation of policies, initiatives, programs, and budget issues to address the impacts on racial equity. The analysis should be completed by people with different racial perspectives.

**Department:** \_\_\_\_\_

**Contact:** \_\_\_\_\_

**Phone:** \_\_\_\_\_

**Email:** \_\_\_\_\_

**Check One:**

Policy \_\_\_\_ Initiative \_\_\_\_ Program \_\_\_\_ Budget Issue \_\_\_\_

**Title:** \_\_\_\_\_  
\_\_\_\_\_

**Description:** \_\_\_\_\_  
\_\_\_\_\_  
\_\_\_\_\_

### I. Which racial equity opportunity area(s) will the issue primarily impact?

- |                               |                 |
|-------------------------------|-----------------|
| A. Community Development ____ | E. Jobs ____    |
| B. Criminal Justice ____      | F. Health ____  |
| C. Economic Development ____  | G. Housing ____ |
| D. Education ____             | H. Other _____  |

### II. Are there impacts

- |                       |         |        |
|-----------------------|---------|--------|
| A. Contracting Equity | ___ Yes | ___ No |
| B. Workforce Equity   | ___ Yes | ___ No |
| C. Inclusive Outreach | ___ Yes | ___ No |
| D. Public Engagement  | ___ Yes | ___ No |

### III. What geographic areas are impacted?

- A. District One \_\_\_\_\_
- B. District Two \_\_\_\_\_
- C. District Three \_\_\_\_\_
- D. District Four \_\_\_\_\_
- E. All \_\_\_\_\_

F. Other (*Identify areas/neighborhoods*)

---

---

---

---

---

---

#### **Provide detailed responses to the following questions:**

**Set Outcomes:** The specific results you are seeking to achieve that advances racial equity.

- Identify the key community outcomes for racial equity that would demonstrate effectiveness
- What does your department define as the most important racially equitable community outcomes related to the issue?

**Question 1. - What conditions of well-being are you trying to get your neighbors to experience? What is the outcome you're trying to achieve?**

**Analyze Data:** What does data and your conversations with stakeholders tell you about the existing racial inequities?

**Question 2. - What existing data do we have to rely on?**

**Stakeholder Involvement:**

- How have you involved community members and stakeholders?
- Gather information from the community and staff on how the issue benefits or burdens the community in terms of racial equity

**Question 3. - In what ways have we engaged the community on this issue?**

**Determine Benefit and/or Burden:**

- Analyze issue for impacts and alignment with racial equity outcomes

**Question 4. - Who will experience benefits? Who will experience burdens? How will you mitigate unintended consequences?**

**Accessibility:** All persons have equal access to all benefits of policy/programs/service regardless of race, color, religion, sex, sexual orientation, gender identity, national origin, veteran or disability status.

**Question 5. - Is this accessible regardless of ability or status?**

**Marginalized Community Support:** Addresses the needs and concerns of those most impacted by the issues you are working on, particularly to communities of color and those historically underrepresented in the civic process.

**Question 6. - Will this support or relief specifically address the most marginalized communities affected by COVID-19?**

**Implementation Plan:**

- Develop strategies to create greater racial equity or minimize unintended consequences
- Breaks each strategy into identifiable steps, assigns each step to one or more people and suggests when each step will be completed.

**Question 7. - What is your plan for implementation?**

**Evaluate/Raise Racial Awareness/Be Accountable :**

- Track impacts on communities of color overtime.
- Continue to communicate with and involve stakeholders
- Document unresolved issues

**Question 8. - How will you ensure accountability? How will you communicate and evaluate results?**



**SECOND AMENDMENT TO EMERGENCY ORDER NO. 2020-25**  
**FULL PHASE ONE STEP BY STEP RECOVERY ORDER**  
**ALACHUA COUNTY, FLORIDA**

WHEREAS, COVID-19, a respiratory illness caused by a virus that spreads rapidly from person to person and may result in serious illness or death, constitutes a clear and present threat to the lives, health, welfare, and safety of the people of Alachua County; and,

WHEREAS, on March 1, 2020, Governor DeSantis declared a Public Health Emergency because of COVID-19; and, on March 9, 2020, Governor DeSantis issued Executive Order 20-52<sup>1</sup>, declaring a State of Emergency because of COVID-19; and,

WHEREAS, on March 11, 2020, the World Health Organization declared the spread of COVID-19 to be a global pandemic; and, on March 13, 2020, President Trump declared a national emergency concerning COVID-19; and,

WHEREAS, Emergency Order 2020-01 declared a local state of emergency in Alachua County based on the COVID-19 virus on March 16, 2020; and,

WHEREAS, on March 17, 2020, Governor DeSantis issued Executive Order 20-68<sup>2</sup>, prohibiting the sale of alcoholic beverages at certain establishments and placing certain limitations on gatherings for bars, restaurants, and beaches; and,

WHEREAS, to reduce the spread of COVID-19, the United States Centers for Disease Control and Prevention ("CDC") and the Florida State Department of Health recommend implementation of community mitigation strategies to increase containment of the virus, including cancellation of large gatherings and social distancing of at least six feet between persons in smaller gatherings; and,

WHEREAS, limitations on gatherings and the use of social distancing to prevent transmission of COVID-19 are especially important for people who are over sixty years old and people with chronic health conditions because those populations are at a higher risk of severe illness and death from COVID-19. However, everyone, regardless of age or health condition, is threatened by COVID-19; and,

WHEREAS, this Emergency Order is necessary to ensure that our healthcare delivery system can serve those who are ill; and

WHEREAS, the continuing operation of essential businesses is necessary to provide essential goods and services to the public; and,

WHEREAS, on April 1, 2020 Governor DeSantis issued Executive Order 20-91<sup>3</sup> putting in place a state-wide stay at home order and listing what are to be considered essential services and activities; and

---

<sup>1</sup> [https://www.flgov.com/wp-content/uploads/orders/2020/EO\\_20-52.pdf](https://www.flgov.com/wp-content/uploads/orders/2020/EO_20-52.pdf)

<sup>2</sup> [https://www.flgov.com/wp-content/uploads/orders/2020/EO\\_20-68.pdf](https://www.flgov.com/wp-content/uploads/orders/2020/EO_20-68.pdf)

<sup>3</sup> [https://www.flgov.com/wp-content/uploads/orders/2020/EO\\_20-91-compressed.pdf](https://www.flgov.com/wp-content/uploads/orders/2020/EO_20-91-compressed.pdf)

Alachua County  
Second Amendment to Emergency Order 20-25

WHEREAS, Executive Order 20-91 adopts both the Essential Critical Infrastructure Workers guidelines issued by the Department of Homeland Security and the list of essential services and activities set forth in Miami-Dade County Emergency Order 07-20<sup>4</sup>; and,

WHEREAS, the CDC, the Florida Department of Health and the University of Florida recommends the use of face coverings, including those which are homemade to slow the spread of the disease; and

WHEREAS, the gradual reopening of the State and the County will lead to more contact between individuals and lead to more potential for the increased community spread of the disease. Face masks are of great assistance in preventing individuals who may be shedding the virus to spread it to other individuals; and

WHEREAS, researchers at the University of Florida believe it is too early to ease restrictions without enhanced testing in place and that such testing is not currently in place and that COVID-19 will be present in the population for a long time<sup>5</sup>; and,

WHEREAS, according to the Department of Health 15,913 out of 269,043 residents or 5.9% have been tested therefore, local testing has been underutilized and the number of individuals being tested needs to increase and contact tracing must increase as well; and

WHEREAS, COVID-19 is spread through airborne transmission from individuals sneezing, speaking and coughing and infectious droplet nuclei can spread for a great distance, although how far is not fully understood at present; and

WHEREAS, the Centers for Disease Control have recommended the use of facial coverings to reduce the spread of the virus since many individuals with no symptoms can spread the virus<sup>6</sup>; and

WHEREAS, on April 29, 2020, Governor DeSantis issued Executive Order 20-112<sup>7</sup> (Phase 1: Safe. Smart. Step-by-Step. Plan for Florida's Recovery) designed to ease some restrictions established by Executive Order 20-91 in the first phase of a plan to fully reopen the State, effective May 4, 2020; and

WHEREAS, Executive Order 20-112, does not preempt the authority of local governments to add additional restrictions to businesses opened by the Governor; and

WHEREAS, the Board of County Commissioners met on May 1<sup>st</sup> in special session to consider the Governor's Executive Order 20-112 and to receive public comment, and

WHEREAS, the Board of County Commissioners considered the public comment along with

---

<sup>4</sup> <https://www.miamidade.gov/information/library/coronavirus-emergency-order-07-20-businesses.pdf>

<sup>5</sup> <https://mediasite.video.ufl.edu/Mediasite/Play/b8849c7ddb114f2db5fcc0be6a4ec0b41d>

<sup>6</sup> <https://www.cdc.gov/coronavirus/2019-ncov/prevent-getting-sick/diy-cloth-face-coverings.html>

<sup>7</sup> [https://www.flgov.com/wp-content/uploads/orders/2020/EO\\_20-112.pdf](https://www.flgov.com/wp-content/uploads/orders/2020/EO_20-112.pdf)

Alachua County  
Second Amendment to Emergency Order 20-25

information received from the Department of Health and the University of Florida regarding challenges raised at this point in time by COVID-19; and

WHEREAS, the Board of County Commissioners believes based upon the foregoing that it is important to be cautious in the process of opening up businesses in the absence of detailed testing and contact testing while implementing the Governor's plan in phasing, reopening as local conditions allow to be done with prudence; and,

WHEREAS, on May 11, 2020, Governor DeSantis issued Executive Order 20-120<sup>8</sup> (Expanding Phase 1: Safe. Smart. Step-by-Step. Plan for Florida's Recovery), amending and extending Executive Order 20-112 to permit barbershops, cosmetology solons, and cosmetology specialty salons to open subject to standards; and

WHEREAS, on May 15, 2020, Governor DeSantis issued Executive Order 20-123<sup>9</sup> (Full Phase 1: Safe. Smart. Step-by-Step. Plan for Florida's Recovery), opening gyms and fitness centers, subject to standards, and further loosening occupancy restrictions on restaurants and food establishments, in-store retail sales establishments, and museums and libraries, effective May 18, 2020; and

WHEREAS, the Board of County Commissioners met on May 19th to consider the Governor's Executive Order 20-123 and to receive public comment; and

WHEREAS, Governor DeSantis issued Emergency Order 20-131<sup>10</sup> on May 22<sup>nd</sup>, 2020, removing any state restrictions on summer camps and sports activities for youth; and

WHEREAS, the Chair of the County Commission is the Official Authority as prescribed in the County's Code Section 27.07; and,

WHEREAS, pursuant to §252.38(1), Florida Statutes the County has jurisdictional authority over the entire county; and,

WHEREAS, acting on his own authority as the Official Authority and based upon the actions taken on May 26th<sup>th</sup> by the Board of County Commissioners meeting in public session after considering Emergency Order 20-131.

THEREFORE, IT IS ORDERED THAT:

1. While Executive Orders 20-112 and 20-123 provides more opportunity to be outside the home, and in close contact with others, those who are vulnerable to infection should stay home as much as possible. Those who are not considered to be at risk should use prudence when leaving their home and stay at home, if possible.
2. Except as provided herein, all public places where social distancing is difficult to effectuate are

---

<sup>8</sup> [https://www.flgov.com/wp-content/uploads/orders/2020/EO\\_20-120.pdf](https://www.flgov.com/wp-content/uploads/orders/2020/EO_20-120.pdf)

<sup>9</sup> [https://www.flgov.com/wp-content/uploads/orders/2020/EO\\_20-123.pdf](https://www.flgov.com/wp-content/uploads/orders/2020/EO_20-123.pdf)

<sup>10</sup> [https://www.flgov.com/wp-content/uploads/orders/2020/EO\\_20-131.pdf](https://www.flgov.com/wp-content/uploads/orders/2020/EO_20-131.pdf)

Alachua County  
Second Amendment to Emergency Order 20-25

closed to the public, including but not limited to, locations with amusement rides, carnivals, water parks, zoos, arcades, fairs, children's play centers, playgrounds, theme parks, , movie and other theaters, concert and music halls, ,.

3. All services and activities permitted to be operated by Governor DeSantis' Executive Orders (in existence as of this Emergency Order and executed subsequent to this Emergency Order) may operate in Alachua County pursuant to the standards contained herein and referenced by this Emergency Order. All services and activities not permitted to operate by Governor DeSantis' Executive Orders (in existence as of this Emergency Order and executed subsequent to this Emergency Order) may not operate in Alachua County. To the extent any of the services or activities not permitted to operate have on-site retail sales facilities as part of their operation, on-site retail sales may operate subject to the limitations below and calculating occupancy based upon the retail space only.
  - a. Except as exempted herein, all services and activities permitted to operate by this Section shall operate at no more than 50% of their building occupancy.
    - i. Hospitals or other medical facilities following appropriate use of personal protective equipment as required by their licensing bodies may exceed 50% of their building occupancy.
    - ii. Child care facilities may exceed 50% of their building occupancy and use reasonable occupancy limits as allowed by their licenses if they require their staff to use personal protective equipment and screen children for exposure to COVID-19.
  - b. All services and activities shall comply, to the greatest extent feasible, with social distancing requirements as recommended by the Centers for Disease Control and the Surgeon General of Florida, including by maintaining six-foot distance between both employees and members of the public always, including when any customers are standing in line.
  - c. All services and activities shall abide by the safety guidelines issued by the CDC and OSHA, including but not limited to OSHA guidelines regarding COVID-19 found in publication 3990<sup>11</sup>; or subsequent rules more specific to their industry. To the extent any business is governed by licensure or board requirements which are stricter than those of the CDC or OSHA, those board requirements will take precedence and are mandated by this Order. A list will be developed covering Industry Specific Operating Standards for Pandemic Response which will be the standard used for enforcement. Services and activities shall ensure that workers are educated about the required safety standards and shall ensure that the standards be present on the worksite. The County's 311 phone number shall be available to take anonymous complaints from employees who believe that they are being required to work in sub-standard conditions.
  - d. All services and activities should make every effort to maintain no more than 50% of the onsite workforce capacity, where possible and to the extent that reduction can be

---

<sup>11</sup> <https://www.osha.gov/Publications/OSHA3990.pdf>

accomplished without significantly disrupting the ability to conduct services and activities.

- e. In-store retail establishments are encouraged to utilize curbside service and via delivery to limit face to face contact.
  - f. Restaurants and food establishments, licensed under Chapters 500 or 509, Fla. Stat., shall meet social distancing standards. Outdoor seating does not count against indoor occupancy but shall meet the requirements of social distancing. In addition to other restrictions found in this Emergency Order and Governor's Orders, restaurants and food establishments shall comply with the Food and Drug Administration "Best Practices for Retail Food Stores, Restaurants, and Food Pick Up and Delivery Services During the Covid-19 Pandemic."<sup>12</sup> To the extent that any social club, country club or fraternal organization serves meals but is otherwise exempt under Chapters 500 or 509, Fla. Stat., they shall comply with social distancing standards and meet the occupancy and face covering requirements of restaurants.
  - g. Private museums, libraries, botanical gardens and wildlife preserves may operate at 50% occupancy, but shall not allow any use of interactive displays or playground equipment.
4. Use of facial coverings.
- a. Persons working in or visiting grocery stores, restaurants, in-store retail establishments, pharmacies, construction sites, public transit vehicles, vehicles for hire, along with locations where social distancing measures are not possible shall wear facial coverings as defined by the CDC.
  - b. Facial covering includes any covering which snugly covers the nose and mouth, whether store bought or homemade, and which is secured with ties or ear loops. The Centers for Disease Control provide examples of homemade facial coverings.<sup>13</sup> Persons should not utilize N95 rated masks, as those are critical supplies for health care workers, police, fire, emergency management, or other persons engaged in life/safety activities. Persons who wear facial coverings should review the CDC and Florida Department of Health guidelines regarding safely applying, removing, and cleaning face coverings.
  - c. A facial covering shall not be required for children under six, persons who have trouble breathing due to a chronic pre-existing condition or individuals with a documented or demonstrable medical problem. It is the intent of this provision that those individuals who cannot tolerate a facial covering for a medical, sensory or any other condition which makes it difficult for them to utilize a facial covering and function in public are not required to wear one. It is recognized that this requirement is broader than what might be considered to be a covered condition under the Americans with Disabilities Act.
  - d. This Emergency Order does not change or alter any social distancing requirements imposed by this or in any other emergency order.

---

<sup>12</sup> <https://www.fda.gov/food/food-safety-during-emergencies/best-practices-retail-food-stores-restaurants-and-food-pick-updelivery-services-during-covid-19>

<sup>13</sup> <https://www.cdc.gov/coronavirus/2019ncov/prevent-getting-sick/diy-cloth-face-coverings.html>

Alachua County  
Second Amendment to Emergency Order 20-25

- e. This Emergency Order does not change any requirements for wearing facial coverings imposed by regulatory bodies or orders from the Governor.
  - f. Facial coverings do not have to be worn while eating or drinking.
5. Pools. Indoor and outdoor pools may operate or open subject to the following standards.
- a. Pools shall meet the standards set by the CDC<sup>14</sup> and Florida Administrative Code §64E-9.004 for disinfectant level.
  - b. All seating and tables around any pool shall be set up with social distancing of at least 6 feet between groupings and fixed in some way so they cannot be easily rearranged.
  - c. Activity in pools shall be limited to activities with social distancing and occupancy of 1 person per 100 square feet of water surface. Groupings outside the pool shall be limited to no more than 10 individuals.
  - d. The owners/operators of these pools shall post signs explaining these rules and monitor the pool for compliance with the health standards and use limitations on a reasonable basis.
  - e. Pool houses and locker rooms shall limit their occupancy to 50% occupancy and shall ensure that surfaces within businesses are disinfected in accordance with applicable CDC guidelines. Employees working in pool houses, locker rooms, around pools and in similar areas shall wear facial coverings.
6. Groups of people greater than ten are not permitted to congregate in any public space that does not readily allow for appropriate physical distancing. Groups greater than 10 may be ordered to disperse. This includes any gathering which takes place in the commons area of any multiple residence facility.
7. The provisions of the Governor's Emergency Order 20-131 shall be effective within the restrictions set forth in this Order concerning social distancing and the size of groups. The Board of County Commissioners intends to take input from the various stake holders on appropriate best practices to follow, but in the meantime urges these groups to utilize guidance from the centers for Disease Control<sup>15 16</sup> or other activity specific governing bodies.
8. Severability.

Any provision(s) within this Emergency Order that conflict(s) with any State or Federal law or constitutional provision, including the State's preemption of the regulation of firearms and ammunition codified in section 790.33, Fla. Stat., or conflict(s) with or are superseded by a current or subsequently-issued Executive Order of the Governor or the President of the United States, shall be deemed inapplicable and deemed to be severed from this Emergency Order, with the remainder of the Emergency Order remaining intact and in full force and effect. To the extent application of some or all the provisions of this Emergency Order is prohibited on the sovereign land of a federally

---

<sup>14</sup> <https://www.cdc.gov/healthywater/swimming/index.html>

<sup>15</sup> <https://www.cdc.gov/coronavirus/2019-ncov/community/schools-childcare/youth-sports.html>

<sup>16</sup> <https://www.cdc.gov/coronavirus/2019-ncov/community/schools-childcare/summer-camps.html>

Alachua County  
Second Amendment to Emergency Order 20-25

or state recognized sovereign Indian tribe, such application is expressly excluded from this Emergency Order.

9. Effective Date; Duration.

This Emergency Order supersedes any inconsistent emergency order. This Order shall be effective upon filing with the Clerk of the Court and will stay in effect during the pendency of the state of emergency or until adoption of subsequent order or repeal.

10. This Emergency Order is in addition to the Executive Orders issued by Governor DeSantis.

11. This Emergency Order applies to incorporated and unincorporated areas within Alachua County, but has no application outside of Alachua County. Municipalities have the authority to enforce this County Order within their jurisdiction. Municipalities are authorized to impose regulations which are more stringent than those set forth herein.

12. The County or municipalities within its boundaries will direct any establishment to cease and desist operations that are in violation of this Emergency Order and may treat violations as a violation of County or Municipal ordinance as appropriate. The County has jurisdiction countywide to enforce the terms of this Order.

13. This Emergency Order does not apply to operations of local governments within the county, to the State University System, State College System, the State of Florida, or Federal agencies who are encouraged to adopt their own rules and procedures regarding the matters set forth herein.

14. Except as provided herein, any violation of these emergency measure(s) shall be a violation of Sec. 252.50, Fla. Stat., and may be punishable as provided therein and shall be enforced by law enforcement as provided by law.

15. A violation of section 4 of this Order is a noncriminal infraction. A violation of section 4 of this Order does not authorize the search or arrest of any individual prior to issuing any citation the individual will be asked to comply with the order or be able to explain how 4(c) applies to them. Failure to comply with the requirements of section 4 of this Order presents a serious threat to the public health, safety, and welfare, pursuant to Chapter 162, Florida Statutes, and a citation may be issued immediately for such violation. The County shall enforce the first violation of section 4 of this Emergency Order through a fine of \$125.00 to the violator. The second violation of section 4 of this Emergency Order shall be subject to a fine of \$250.00 to the violator. All subsequent violations of section 4 of this Order shall constitute a Class V violation under Article II, Chapter 24 of the Alachua County Code of Ordinances, requiring a mandatory court appearance and subject to a fine not to exceed \$500.00. All other remedies available at law or equity, including injunction, remain available to the County, even after issuance of a

Alachua County  
Second Amendment to Emergency Order 20-25

citation. The municipalities may enforce this Order as provided by Florida law and municipal code.

16. This Order supersedes and replaces any conflicting provisions of prior orders.

Dated this 26th day of May, 2020 at 10:00 p.m.

BOARD OF COUNTY COMMISSIONERS  
OF ALACHUA COUNTY, FLORIDA

By:   
Robert Hutchinson, Chair

APPROVED AS TO FORM:



County Attorney's Office